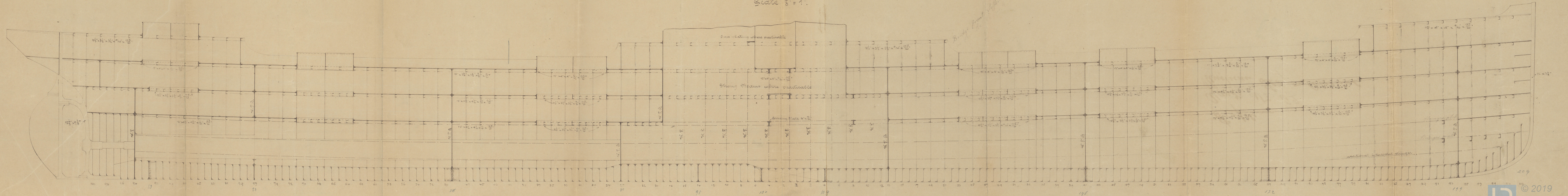


10-100

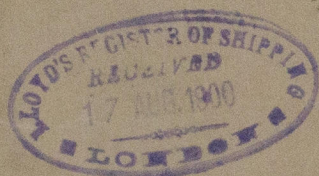
Cargo Steamer No 62.  
Three Deck Rule - Class + 100 A, Lloyd's (Steel)  
Principal Dimensions: 451' 4" x 56' - 3" x 33' - 7".  
Scale  $\frac{1}{8}" = 1'$ .







*S. S. Austria*  
*Trieste Report*  
*N. 652*



*Profile*

*Yard N. 62*  
*Austrian Lloyd's Arsenal.*

RETAIN

W 562-0110



© 2019

Lloyd's Register  
Foundation