

30-11-22
8/12-22

No. 473.

PROFILE & DECK PLANS.

DIMENSIONS AS PER RULE

LENGTH B.P. 405.00.

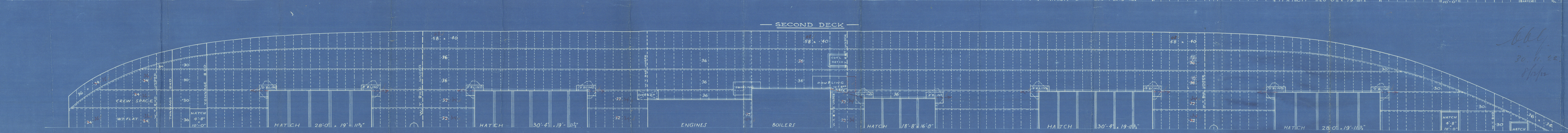
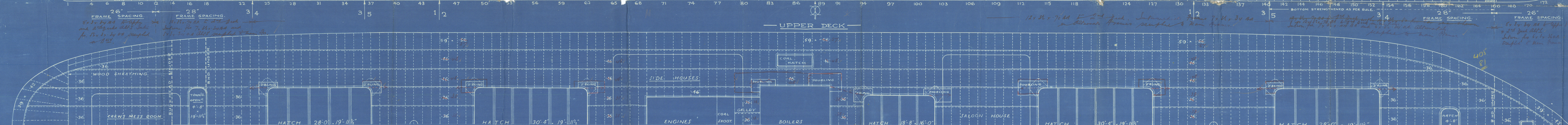
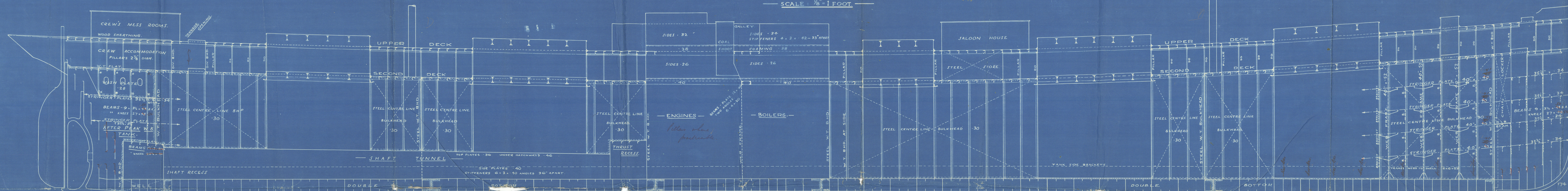
BREADTH MLD. 53.29

DEPTH MLD TO UDK. 27.00. 8'-0" TWN DKS.

CLASS 100A1 WITH FREEBOARD. WITH TONNAGE OPENING.

SCALE 1/8" = 1 FOOT

JOHN READHEAD & SONS, LTD.
SHIPBUILDERS & ENGINEERS,
SOUTH SHIELDS.



PARTICULARS FOR THE BOARD	
LENGTH BETWEEN PERPENDICULARS	405'-0"
BREADTH EXTREME	53'-6"
DEPTH MOULDED AT MIDDLE OF LENGTH 2ND DK.	27'-0"
DEPTH MOULDED AT MIDDLE OF LENGTH 2ND DK. FROM CELL D. BOTTOM TO SECOND DK.	25'-0"
TONNAGE UNDER DECK (SECOND DK)	454.5 TONS
COEFFICIENT OF FINENESS (CORRECTED)	13
TWEEN DECKS FULL LENGTH OF VESSEL 8'-0" AT SIDE & CENTRE.	
SCANTLING CLASS 100A1 WITH FREEBOARD WITH TONNAGE OPENING	
ROUND OF BEAM	13"
SHEER AFTER SIDE OF STERN POST	5'-0"
FORE " " STEM	10'-2"
1/8" LENGTH FROM AFT	2'-8 1/2"
1/8" " " FORWARD	5'-3"
UPPER DECK & SECOND DECK NOT COVERED WITH WOOD	

S/S 473.

J. Rendred Shaw

PROFILE & DECK PLANS

S. S. QUEENMOOR.

NEWCASTLE ON TYNE.

Report No. 77468

S.S.

At drawing

284 x 41-10 x 21-9¹/₂

med

4' Rqd.

Rqd 2 1/2 164' 5' from

RETAIN



© 2021

Lloyd's Register

W557-0020