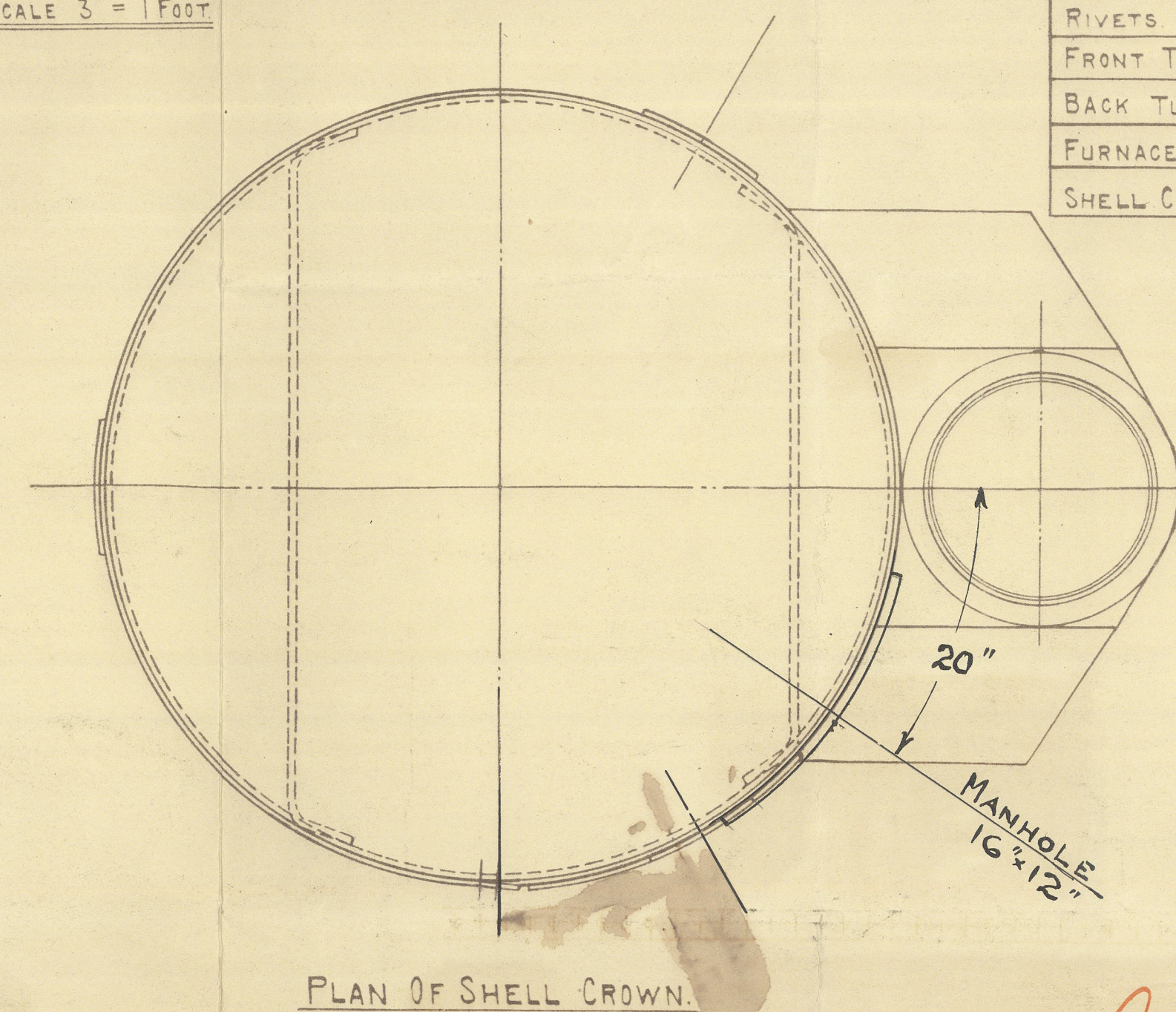
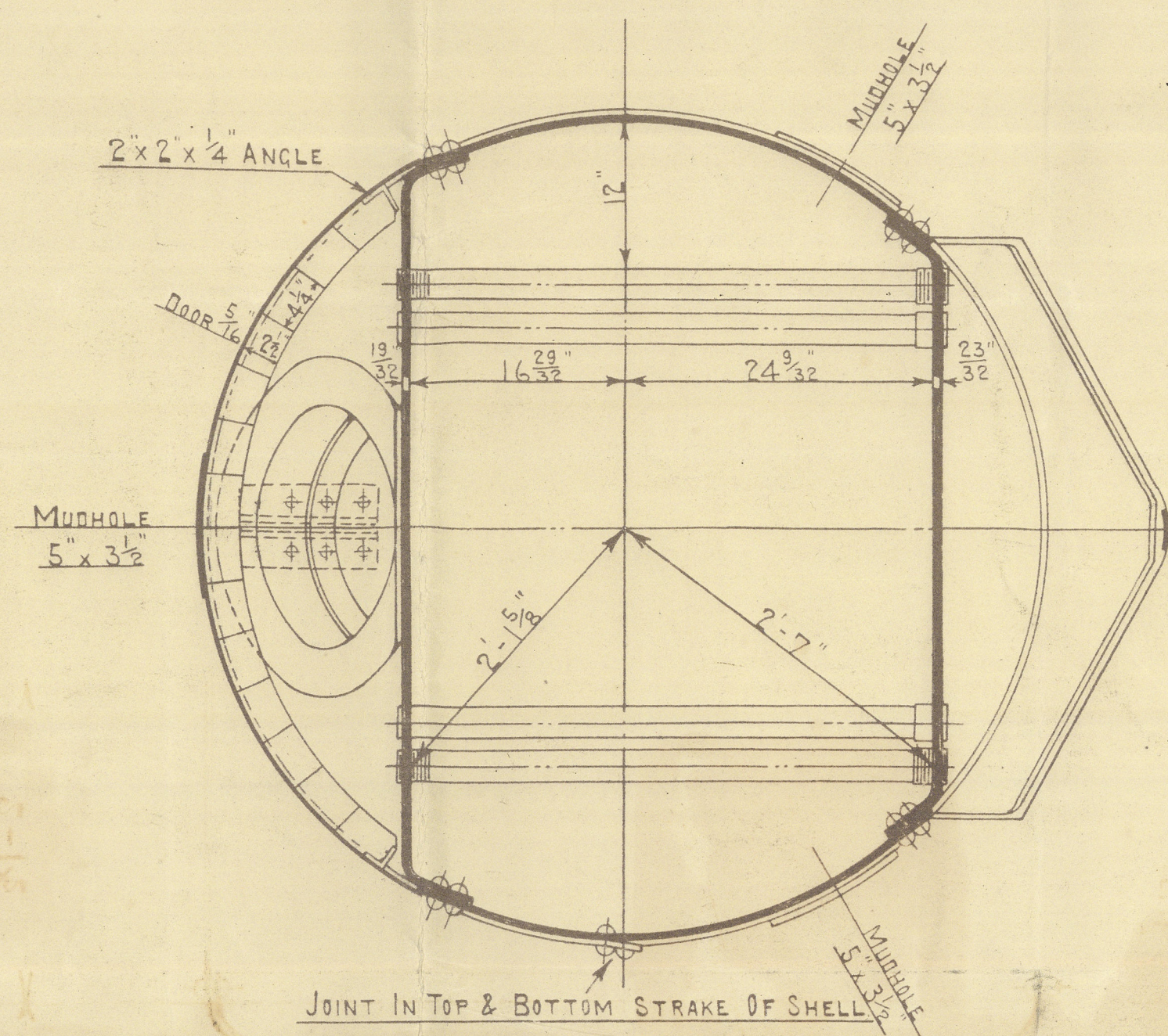
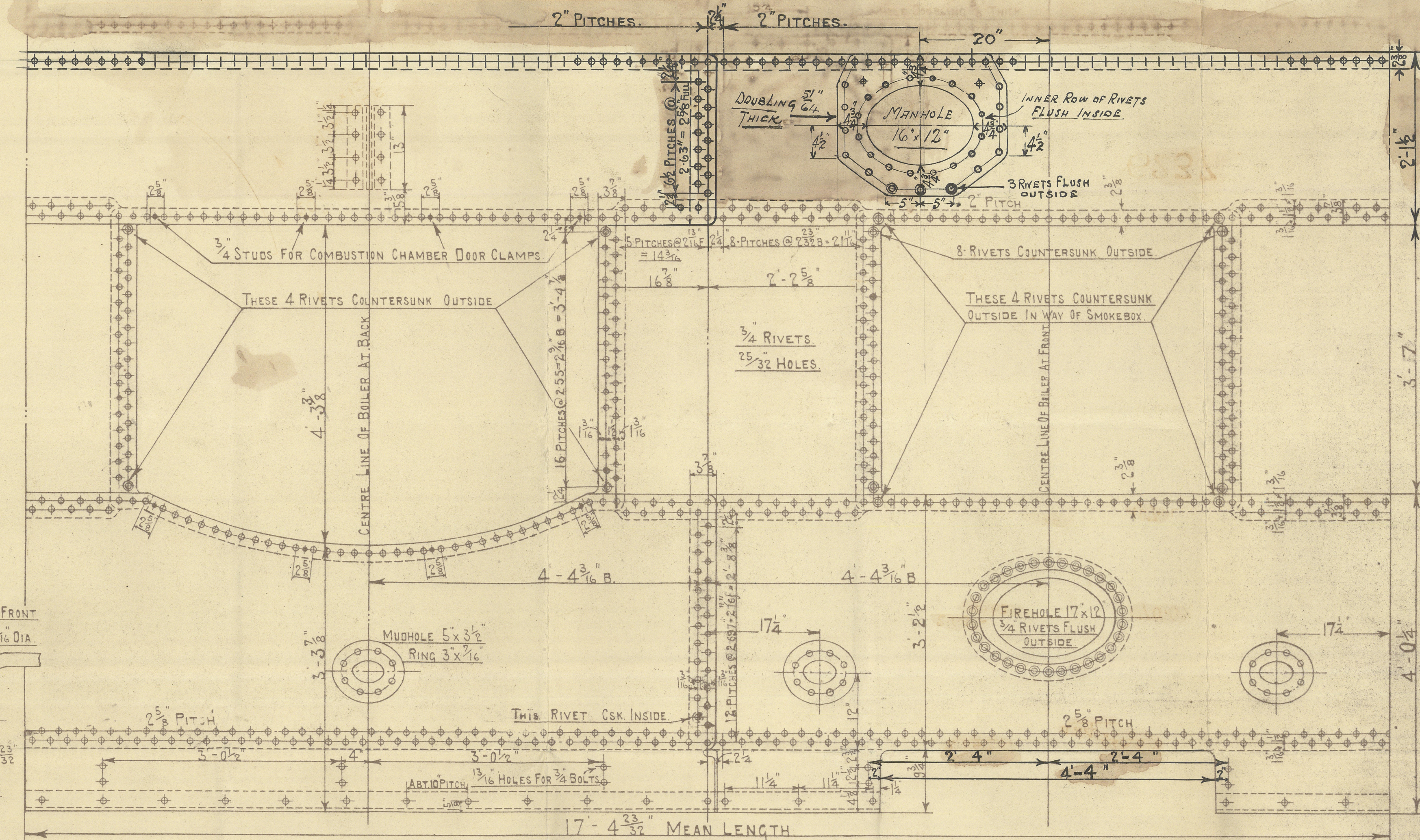
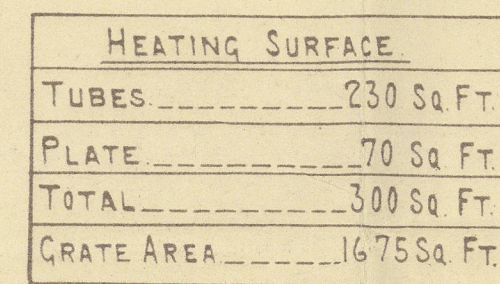


30/10/13



BUREAU VERITAS	
SHELL	$\frac{6.9 \times 3.14 \times (.4735 - .04)}{6} = 130 \text{ LBS}$
RIVETS	$\frac{.7 \times .7 \times 4.793 \times 24 \times 2240}{16} = 116 \frac{1}{2} \text{ LBS}$
FRONT TUBE PLATE	$\frac{14.010 \times .71875 \times (4 - 2.593)}{16} = 127.6 \text{ LBS}$
BACK TUBE PLATE	$\frac{134.10 \times .593 \times (4 - 2.5)}{16} = 112 \text{ LBS}$
FURNACE	$\frac{600 \times (.8 - 2)}{16} = 126 \text{ LBS}$
SHELL CROWN	$\frac{840 \times (.2 - 2)}{57} = 103 \text{ LBS}$

LLOYDS		
PLATE	$\frac{2.63 - .78125}{2.63} \times 100 =$	70.0%
RIVETS	$\frac{2 \times 4.793 \times .85}{2.63 \times 4.375} =$	5%
FRONT TUBE PLATE	$\frac{4 - 2.59375}{4 - 2.5} \times 100 =$	35.1%
BACK TUBE PLATE	$\frac{4 - 2.5}{4 - 2} \times 100 =$	37.5%
SHELL	$\frac{20.5 \times (7.2 \times 69)}{62} =$	107.0 Lbs
FRONT TUBE PLATE	$\frac{20.5 \times (11.5 - 2) \times 35.1 \times \frac{26}{28}}{62} =$	102.37 Lbs.
BACK TUBE PLATE	$\frac{20.5 \times (9.5 - 2) \times 37.5 \times \frac{26}{28}}{62} =$	104.46 Lbs.
FURNACE	$\frac{1250 \times (59 - 2)}{57} =$	131.5 Lbs.
OGEER RING.	$\frac{516 \times 100\% - 66 \times (66 - 57)}{66 \times (66 - 57)} =$	100. LBS.

For approval.
FLAT TOP.

PATENT BOILER N° 6237.

$$\underline{\underline{5' - 6'' \times 10' - 9'' \times 300 \text{ \#} \times 100 \text{ LBS.}}}$$

SCALE 1 INCH TO 1 FOOT.

—SIEMENS MARTIN MILD STEEL PLATES.—

TENSILE TESTS:-

PLATES NOT EXPOSED TO FLAME OR FLANGED-----28 TO 32 TONS.

PLATES EXPOSED TO FLAME OR FLANGED EXCEPT FOR CROWN _____ 26 TO 30 TONS.

FURNACE CROWN 26 To 29 Tons.

DRAWING No 10085.

10005

0085

Foundat

221

SURVEY:- LLOYDS.

COCHRAN & CO ANNAN LD.
ENGINEERS & BOILERMAKERS.
ANNAN, SCOTLAND.

10085

Boiler No 6237.

Drawing No 10085

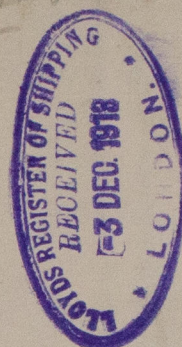
29. 10. 13.

C. H. P.



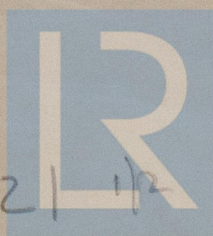
S-S. Fraternity

GLASGOW REPORT No. 33378.



RETAIN

RETAIN



© 2021

Lloyd's Register
Foundation

W 836-0221 12

COCHRAN & Co., ANNAN, Ltd.

Enclosure.

FOR

Messrs

Lloyd's Register

2/2

W5536-0221