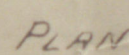
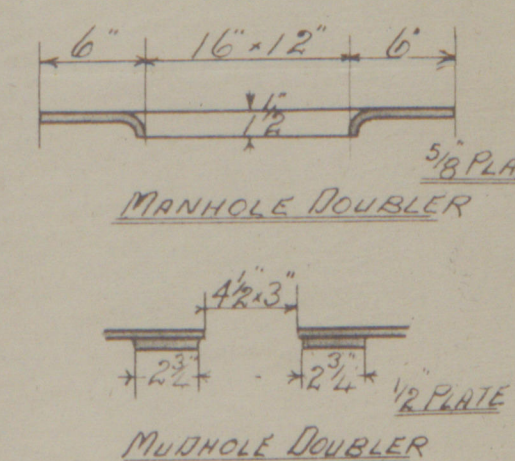


SECTIONAL ELEVATION

N^o 1353 MESS^{rs} AUSTIN AND SON. S/S N^o 228

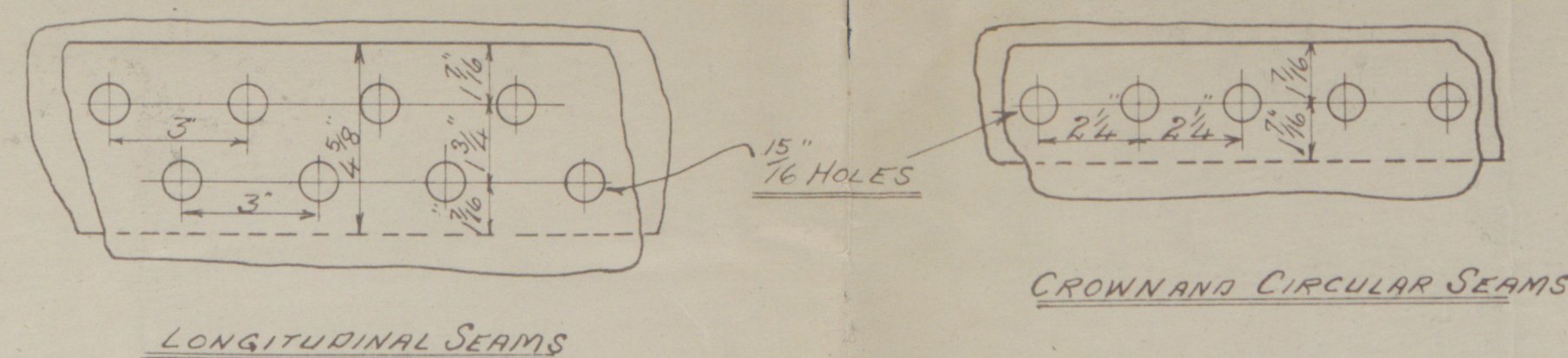


BOILER Nº 1353



FRONT ELEVATION

SHELL RIVETING HOLES DRILLED



WORKING PRESSURE 90 LBS PER SQ. INCH

204 PLAIN TUBES 2 1/2" EXT. DIAM. 144 THICK SWELLED 1/4" AT FRONT END

STEEL PLATES & RIVETS IRON TUBES

TENSILE STRENGTH OF SHELL PLATES 27 TO 32 TONS

No " OF ALL OTHER PLATES 26 TO 30 "

BLAKE PATENT BOILER TO LLOYDS SURVEY

HEATING SURFACE 550 ft^2 SCALE 1"=1 FOOT

SCALE 1"=1 FOOT



W. B. 3/3/04
7/8. Apr 12/04

19-4-04
Higher than approved
1329.

W555-0099 Lloyd's Reg

Blake's Improved
Patent Boiler

No 1353

Richardsons Westgarth

Austin & Son

S S No 228

No 1377

Irvine SB & DD Co

S S No 140

No 1377

S S "Germanic"

Appl. Report No. 12 538

RETAIN



© 2020

Lloyd's Register
Foundation

W555-0099