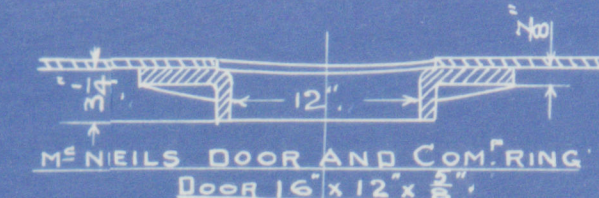


12/6/01.
 18/6/01.
 17/6/01.

STEAM SPACE FROM 9" ABOVE COM^B CHAMBER 170' ^{\$}
WEIGHT OF WATER (FRESH) 9" " " 122 TONS
DRAUGHT AREA THROUGH THE TUBES 6.4 ^{\$}

IRON STAY TUBES MARKED S. 10 THREADS PER INCH



LONGITUDINAL JOINT
PLATE $\frac{19}{32}$ " PITCH $4\frac{1}{8}$ " RIVET HOLES $\frac{7}{8}$ " DIA.
PERCENTAGE OF PLATE 78.46 RIVETS 84.72
WORKING PRESSURE BY RULE 90.1 LBS PER \square

CIRCUMFERENTIAL JOINT
PLATE $\frac{19}{32}$ - PITCH $2\frac{3}{8}$ FULL (2.383) RIVET HOLES 1" DIA.
PERCENTAGE OF PLATE = 58.03 - RIVETS 47.18.

RIVET HOLES DRILLED IN PLACE

TENSILE STRENGTH OF SHELL PLATE 28 TO 32 TONS
TENSILE STRENGTH OF OTHER PLATE 26 TO 30 TONS

NOTE-TENSILE STRENGTH OF FURNACES TO BE AS NEAR 26 TONS AS POSSIBLE BUT NOT UNDER.

FURNACES FOR 100 LBS W.P.
35"
FURNACE 64 THICK

FIREBOX STAYS

STAYS MARKED $\bigcirc \frac{1}{2}$ " DIA. 10 THREADS EFF. AREA = 1.478 in^2

D² D² $\bigcirc \frac{1}{4}$ " " D² D² = .9887 in^2

FIREBOX STAYS SCREWED INTO PLATES AND NUTTED AT BOTH ENDS.

DKY. BOILER 1 OFF

ALL MATERIAL STEEL EXCEPT TUBES WHICH ARE IRON.

11'-0" DIAM x 9'-6" LONG WORKING PRESSURE 90 LBS PER. \square

TO PASS LLOYD'S SURVEY.

Nº 186



© 2021

Lloyd's Register
Foundation

Belfast
Workman Bank & Co
No 186
Banker Bailie
J. S. Lord Auctioneer
Bel 52410

RETAIN



© 2021

Lloyd's Register
Foundation

W554-0194