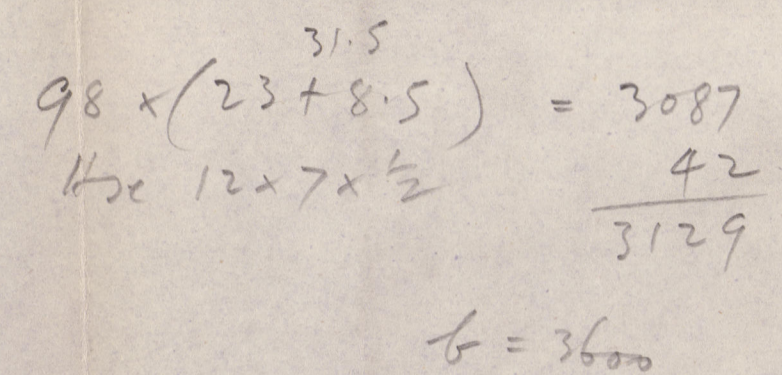


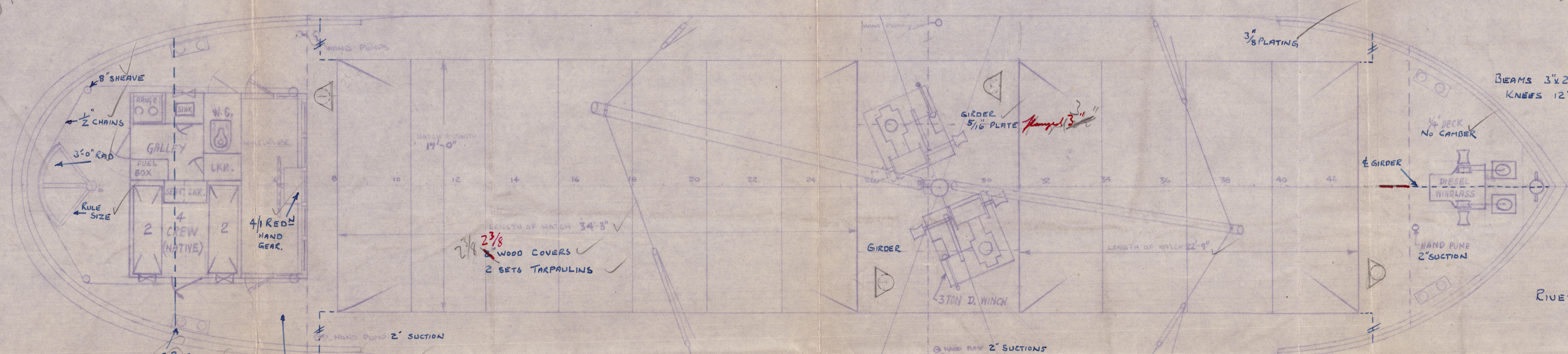
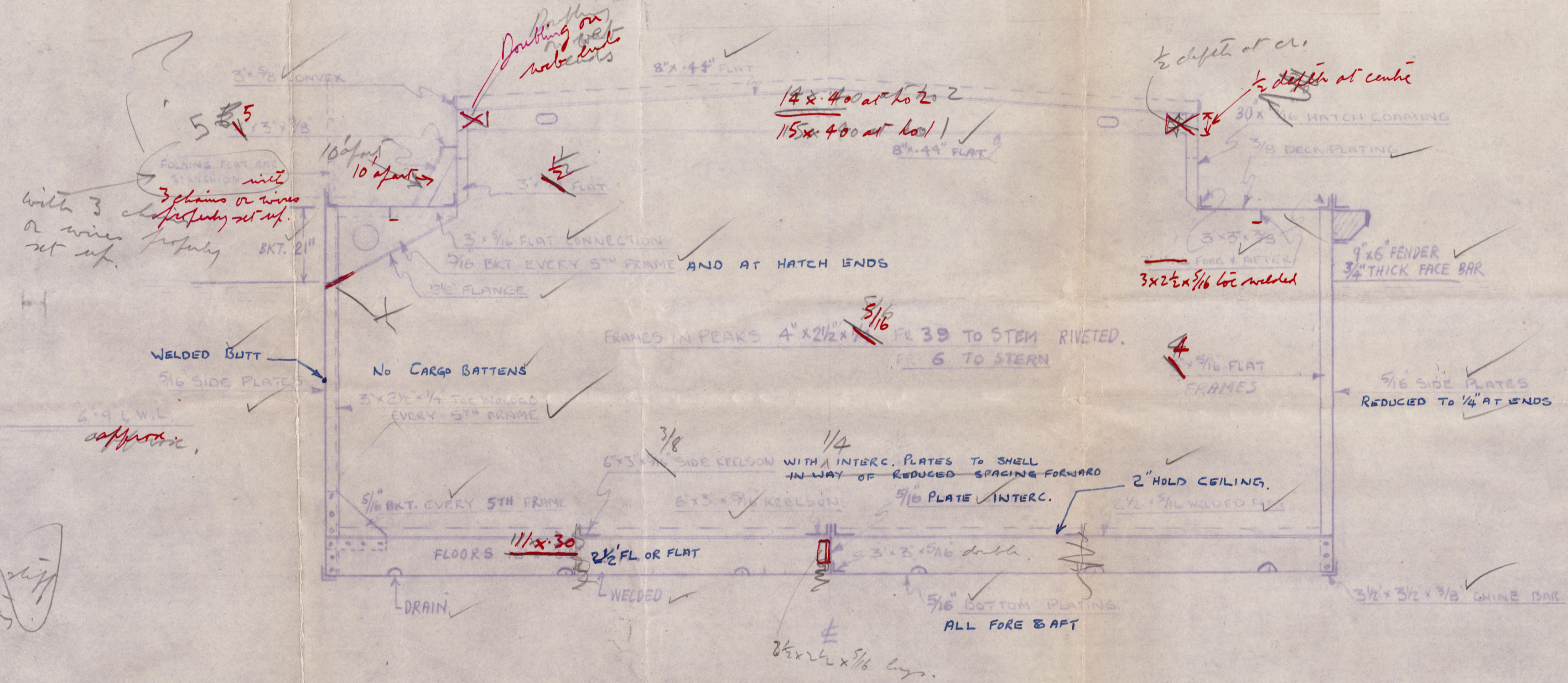
90 " 4" HEMP ✓

" for <sup>b</sup>  
be

Strengthening in  
young old people



W.T. BULKHEADS (WELDED)  
PLATING 5/16  
BOUNDARY BAR 3"x2 1/2"x5/16 (3" TO SHELL) 24"  
STIFFS ~~2"x3/4"x1/4"~~ TO WELDED SPACED AT MAX  
LUGS TOP & BOTTOM 2-5/8" RIVS.



PIVETING :-	CHINE	ANGLE	5/8"	DIA	RIVS	SPACED	4 1/2 DIAS
STINGER	"	"	"	"	"	"	✓
FERMES TO SHELL	"	"	"	"	"	"	✓
BWS BOUNDARY SHEEL	"	"	"	"	"	"	✓
HATCH CORNING SHEEL	"	"	"	"	"	"	✓
KEELSON TO SHELL	"	"	"	"	"	"	✓
DECK BUTT SHEEPS	"	"	"	"	"	"	✓
SHELL	"	"	"	"	"	"	✓

WELDING :- AS PER LATEST RULES

Provision to be made for sounding bells.  
Provision to be made for sounding bells

30.9.48

© 2021  
Lloyd's Register  
Foundation  
W553 50015

RECORDS DEPT.  
LONDON.

"PIONER" ★

39

BROOK MARINE LTD.

250 TON SEA-GOING BARGE

MIDSHIP SECTION & GEN. ARRGT

W553-0015

© 2021

Lloyd's Register  
Foundation

Office

W553-0015



© 2021

Lloyd's Register  
Foundation