

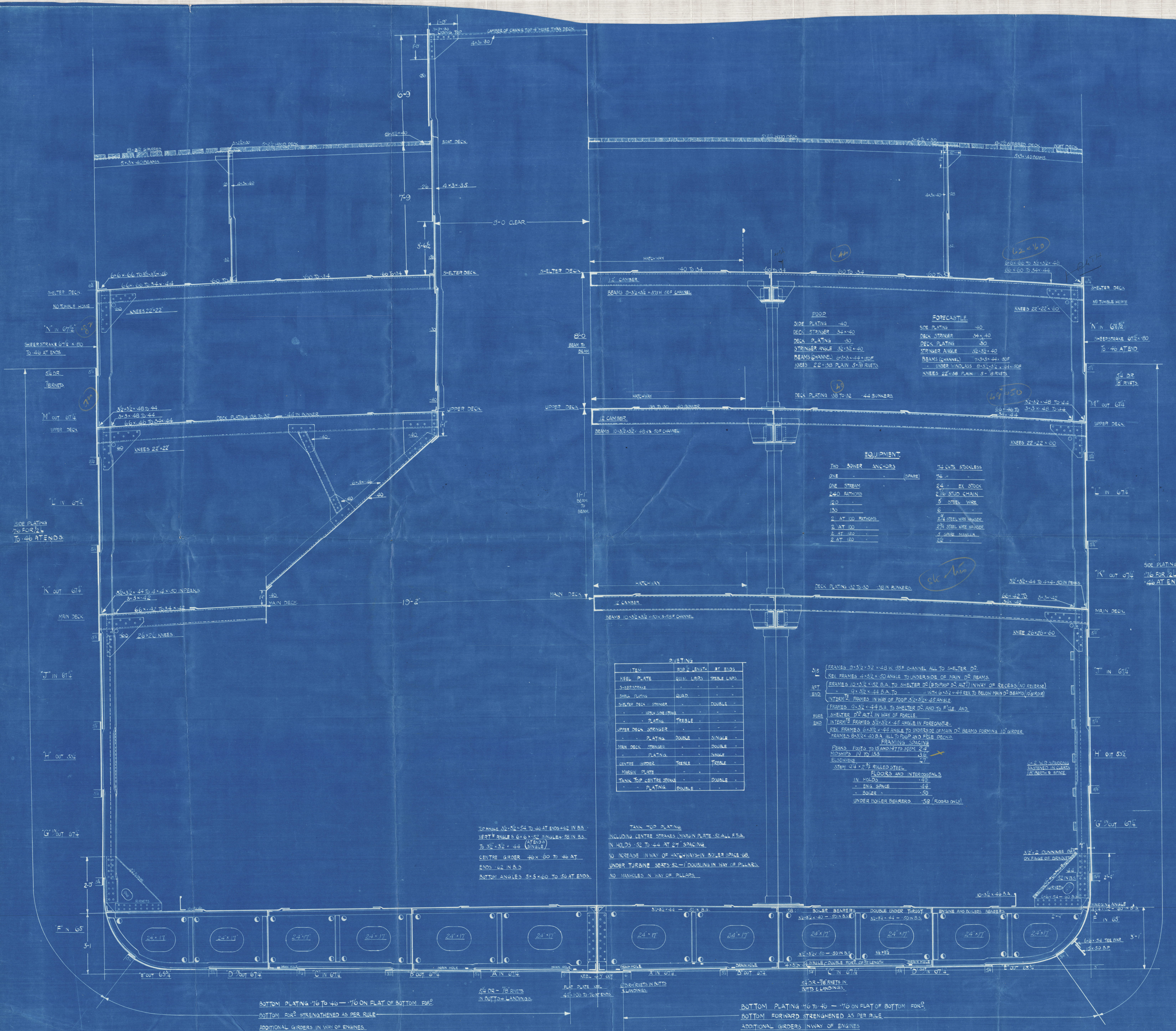
U.S.S. DAHLAND

MIDSHIP SECTION

DIMENSIONS 450'-0" x 58'-0" x 40'-0" MLD

SCALE: $\frac{1}{2}$ " = ONE FOOT.

Nº 576



PLAYING			
ITEM	BOOK ENTS.	AT HAND	
KNEE PLATE	QUIN. LAPS	TRIPLE LAPS	
SHOULDER			
ARM PLATE	QUAD.		
SHOULDER DEC. STRIPPER		DOUBLE	
	HOW MANY TIMES		
	PLAYING	TRIPLE	
UPPER DEC. STRIPPER			
	PLAYING	DOUBLE	SINGLE
MAN. DEC. STRIPPER			DOUBLE
	PLAYING		SINGLE
CENTRE BOMBS		TRIPLE	
MARGIN PAPER			
TANK TOP CENTRE STAYS			DOUBLE
	PLAYING	DOUBLE	

[illegible]

SPAN ONE $3\frac{1}{2} \times 3\frac{1}{2} \times 54$ TO 46 AT ENDS $= 62$ IN B.S.
VERT^L ANGLES $6 \times 6 \times 52$ SINGLE $+ 58$ IN B.S.
TO $3\frac{1}{2} \times 3\frac{1}{2} \times 44$ ($\frac{5 \text{ ENDS}}{\text{SINGLE}} \text{)}$
CENTRE GIRDER 46×60 TO 46 AT
ENDS $= 62$ IN B.S.
BOTTOM ANGLES $5 \times 5 \times 60$ TO 56 AT ENDS

TANK TOP PLATING
INCLUDING CENTRE STRAKES (MARGIN PLATE - SPALL FREE
IN HOLDS - 52 TO 44 AT 24" SPACING.
NO INCREASE IN WAY OF HATCHWAYS - IN BOWLER GEAR.
UNDER TURBINE SEATS - 1 DOUBLING IN WAY OF PILLARS
NO MANHOLES IN WAY OF PILLARS.

BOTTOM PLATING .76 TO .46 - .76 ON FLAT OF BOTTOM FOR
BOTTOM FOR STRENGTHENED AS PER RULE -
ADDITIONAL GIRDERS IN WAY OF ENGINES.

BOTTOM PLATING #6 TO #6 - #6 ON FLAT OF BOTTOM FOR
BOTTOM FORWARD STRENGTHENED AS PER RULE
ADDITIONAL GIRDERS INWAY OF ENGINES

Midship Section

Barclay Curle & Co. Ltd

No 576.

S/S "HIGHLAND WARRIOR"

GLASGOW REPORT No. 40215

W55-0239



© 2021

Lloyd's Register
Foundation