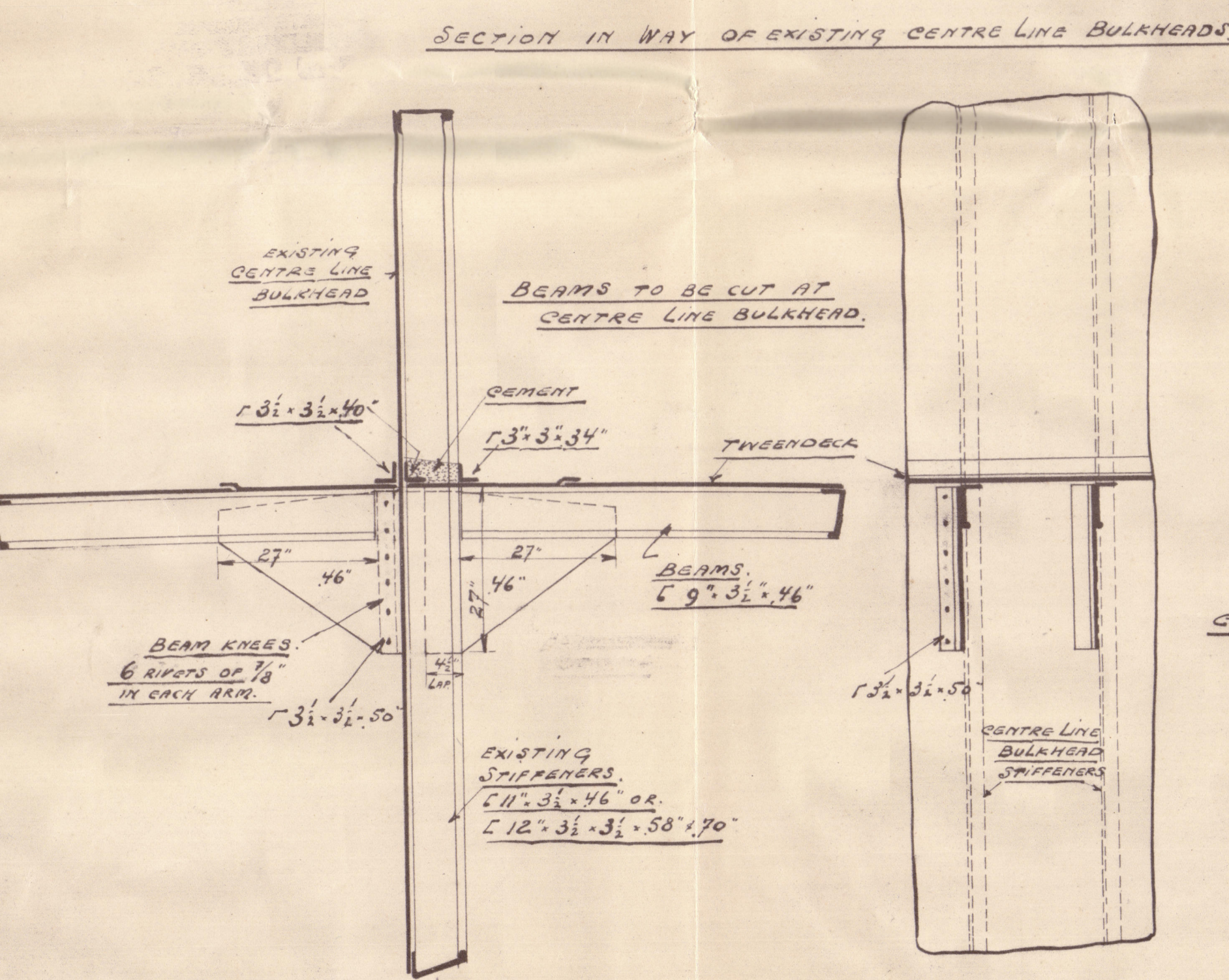
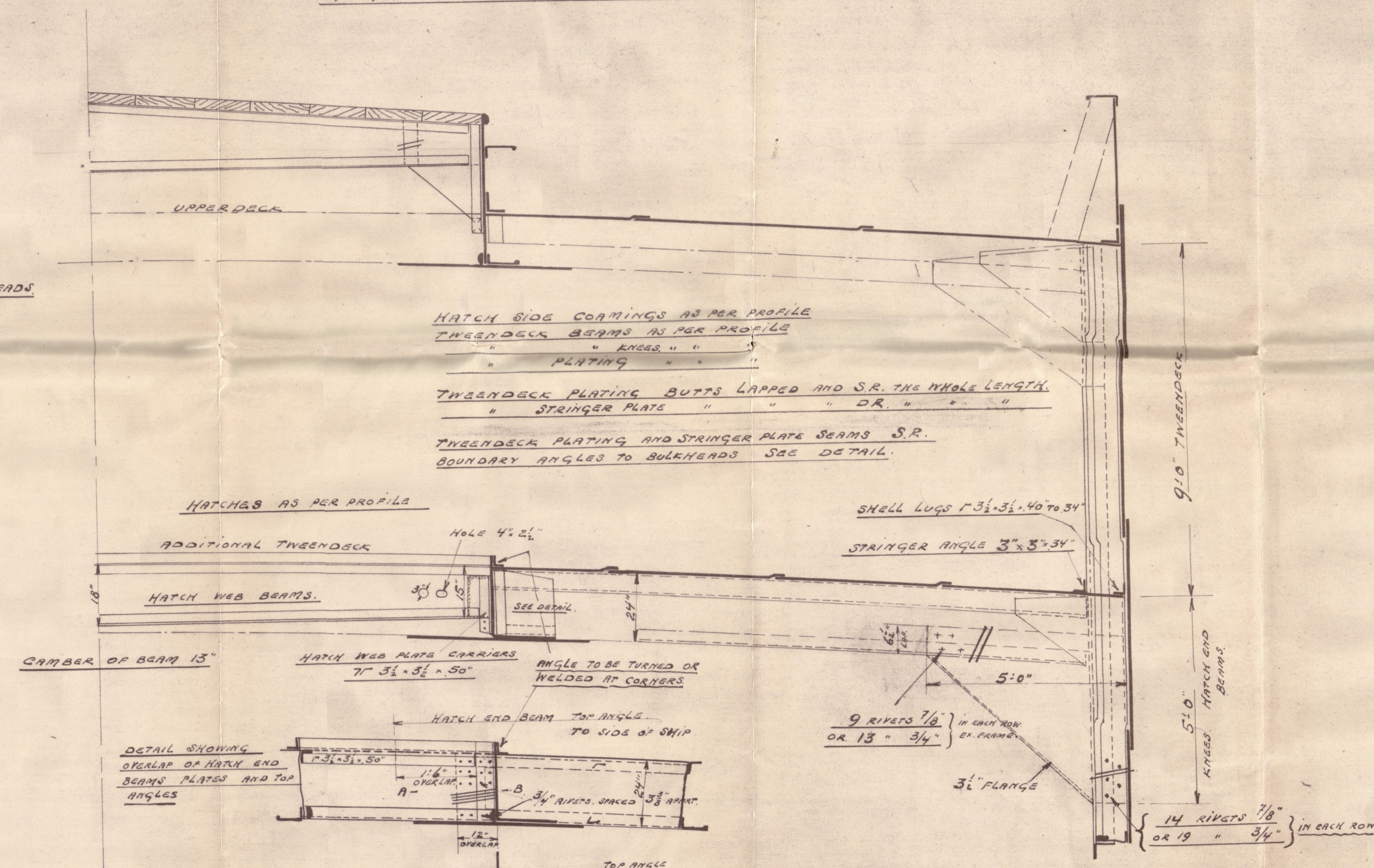
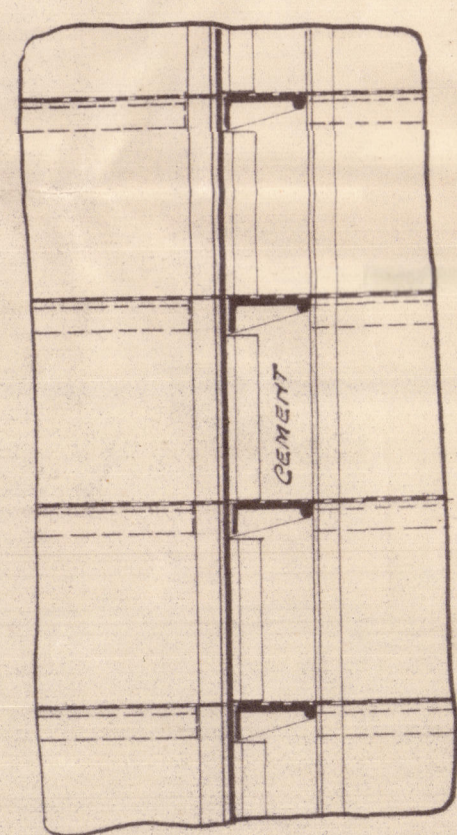


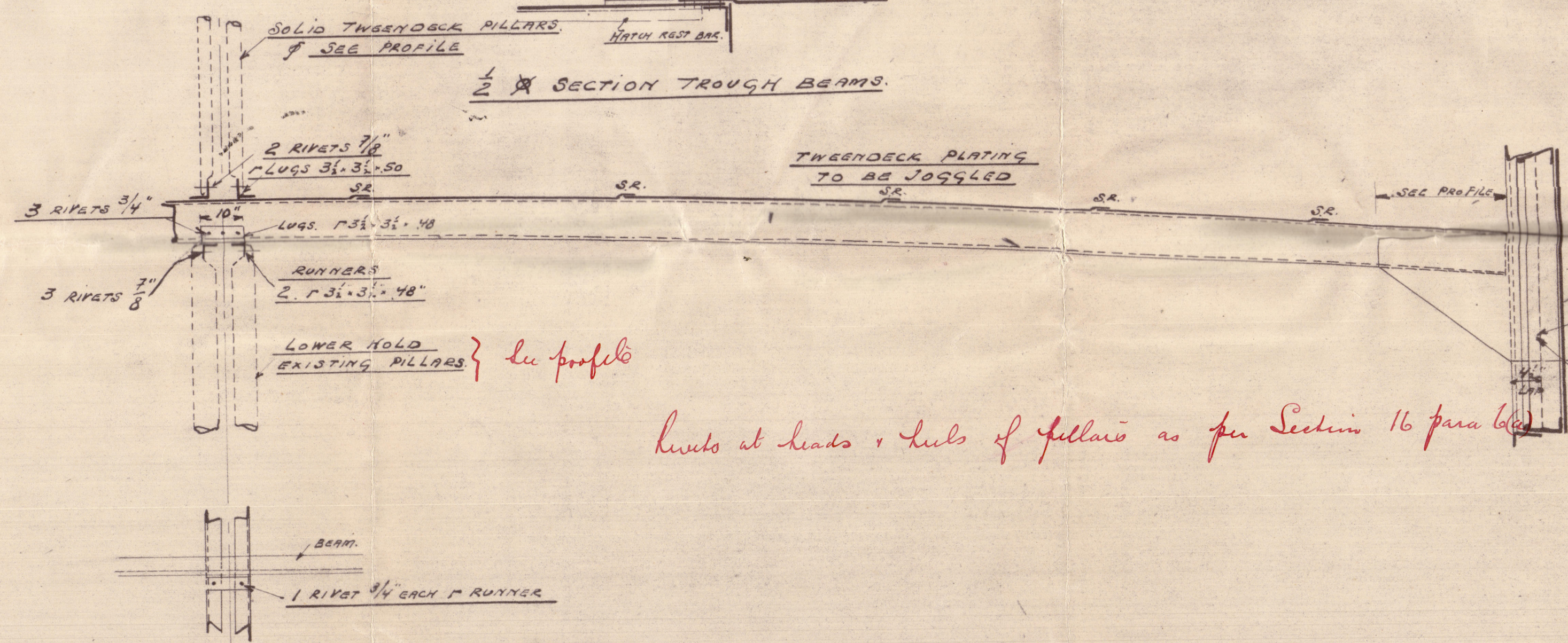
$\frac{1}{2}$  SECTION.  
OF ADDITIONAL TWENDECK.



PLAN VIEW

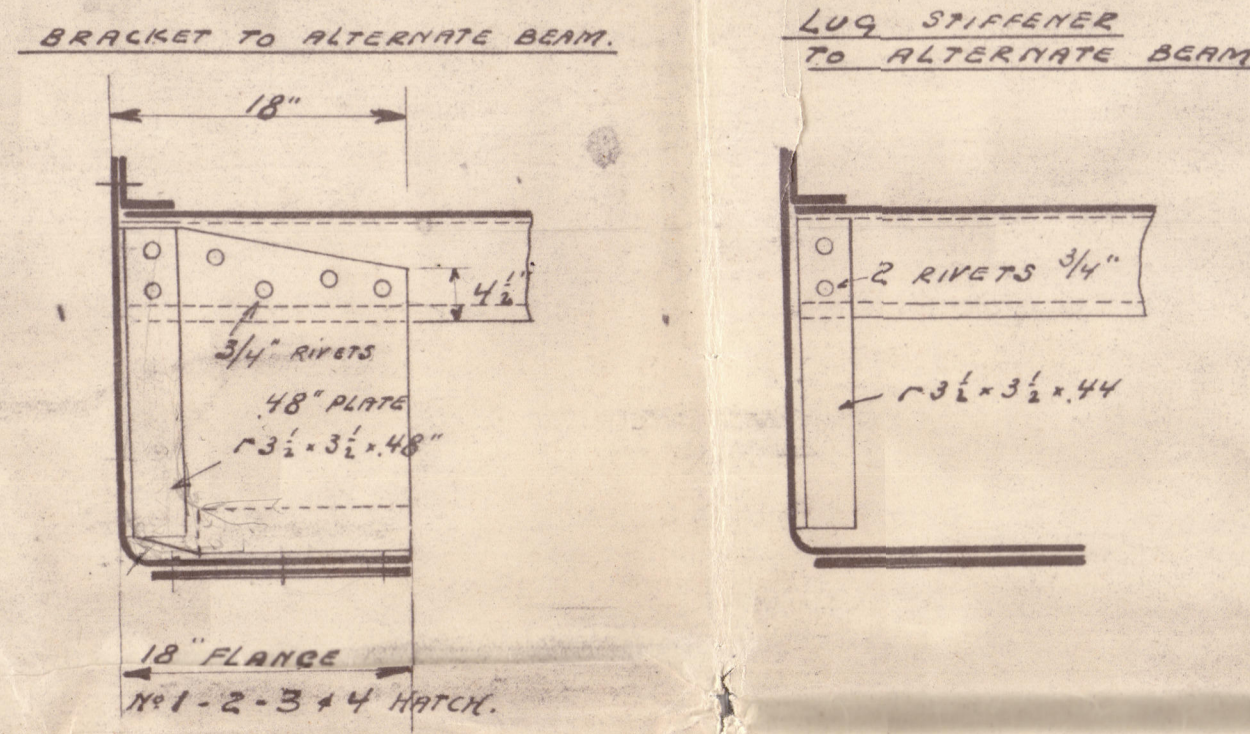


$\frac{1}{2}$  ~~A~~ SECTION THROUGH BEAMS.

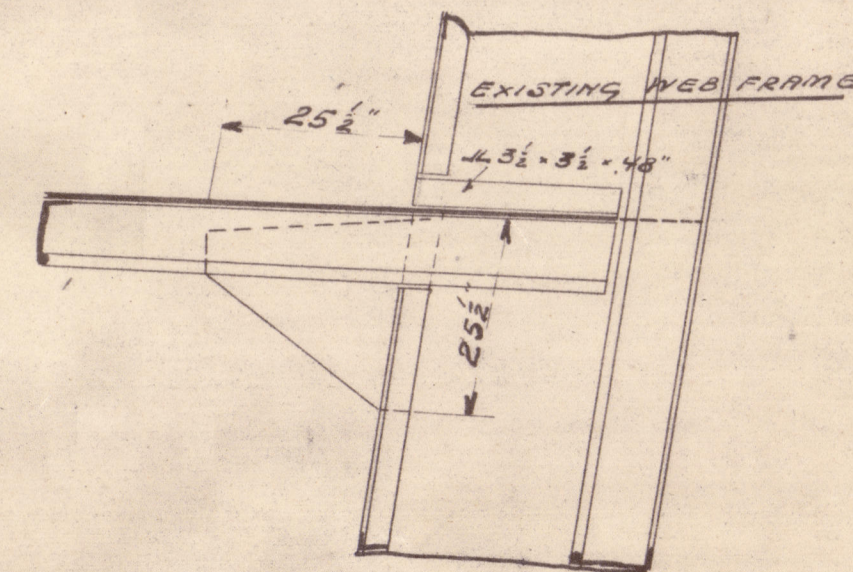


limits at heads & heels of pillars as per Section 16 para (a)

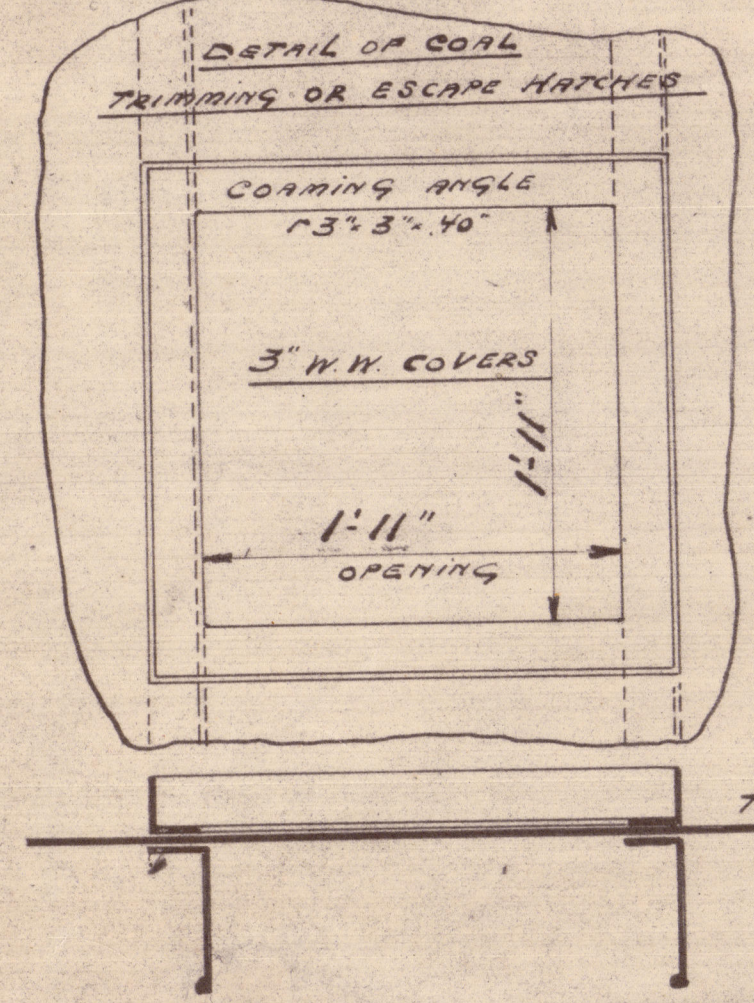
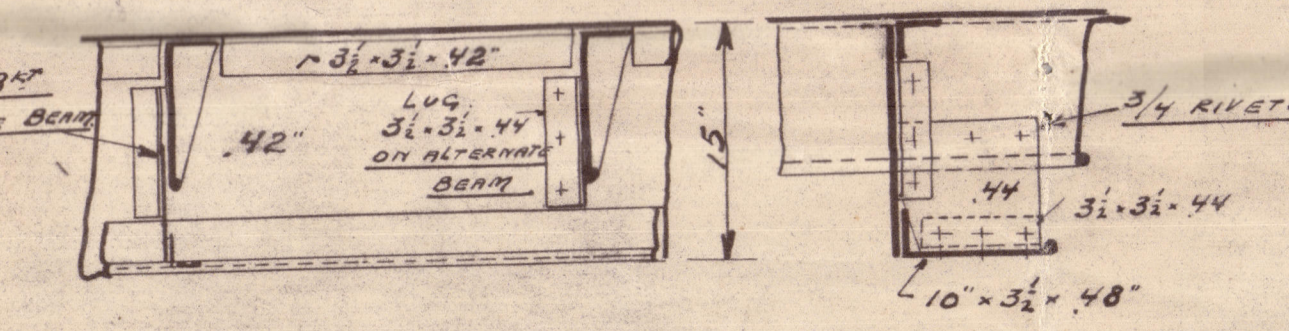
ATTACHEMENT OF HALF BEAMS  
TO HATCH COAMING



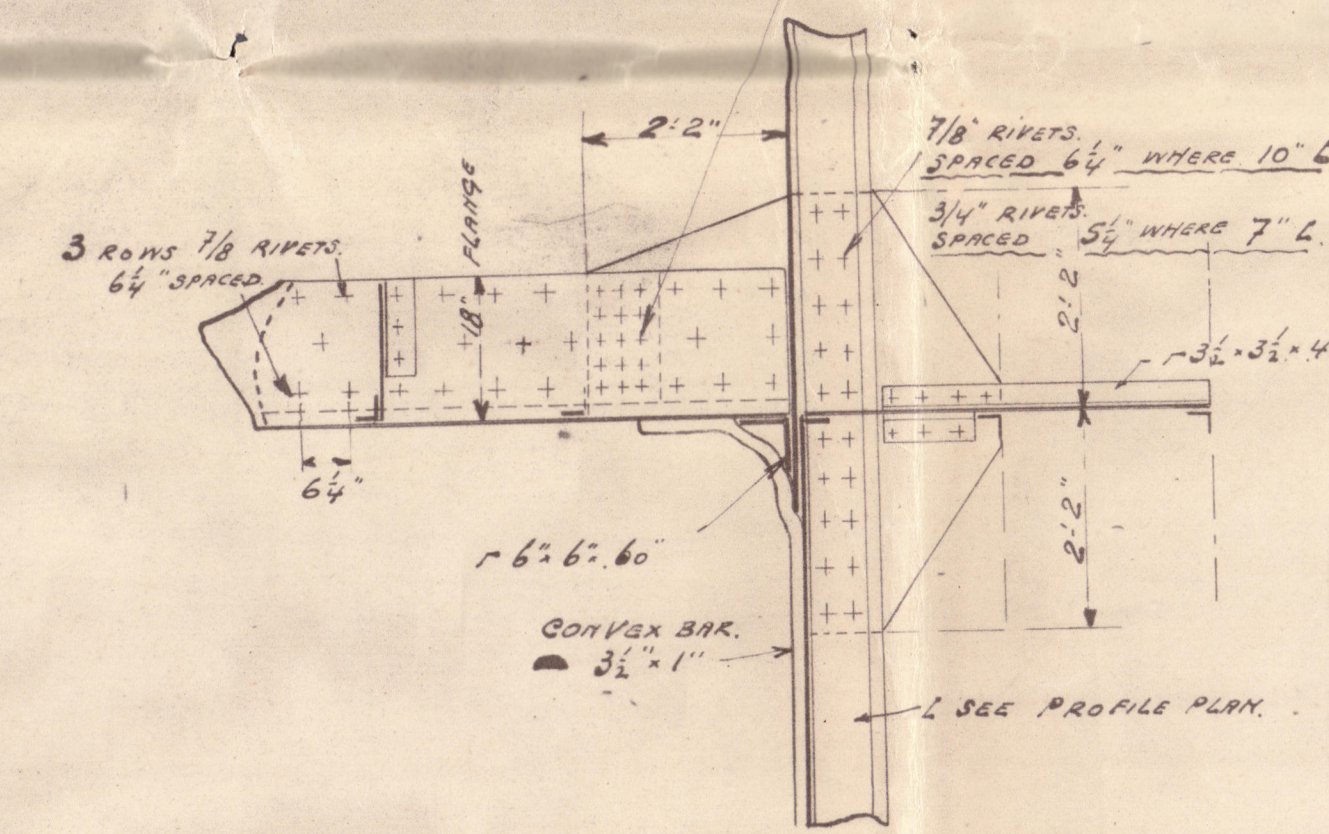
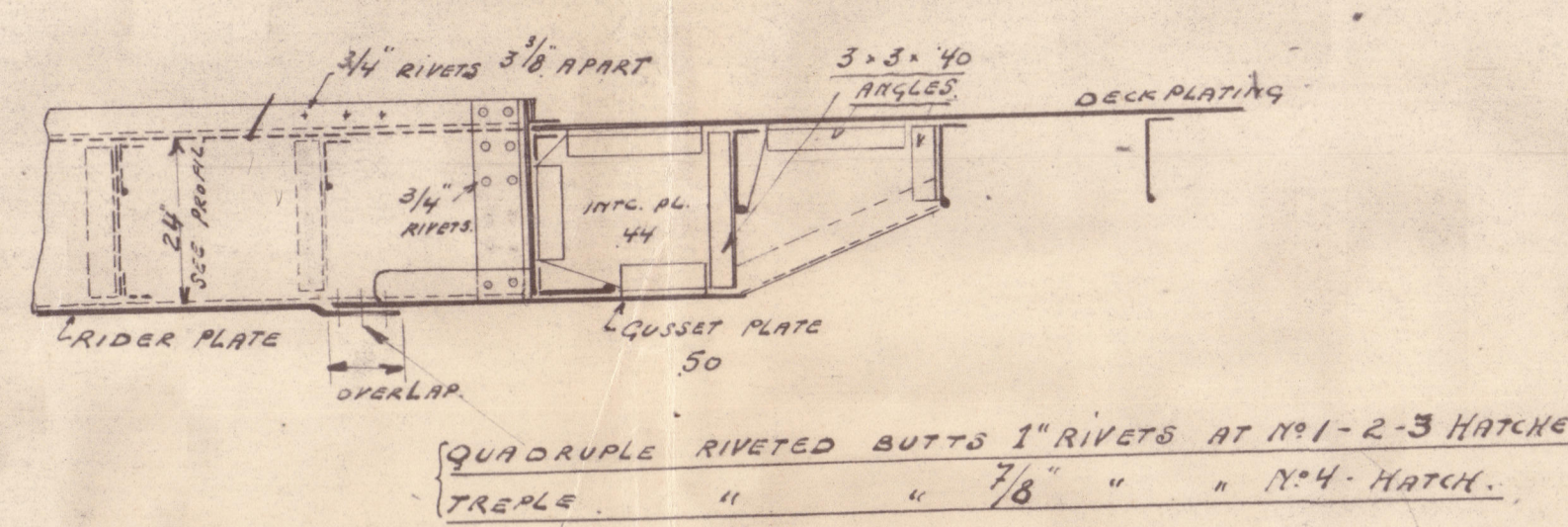
ATTACHEMENT OF TWEENDECK



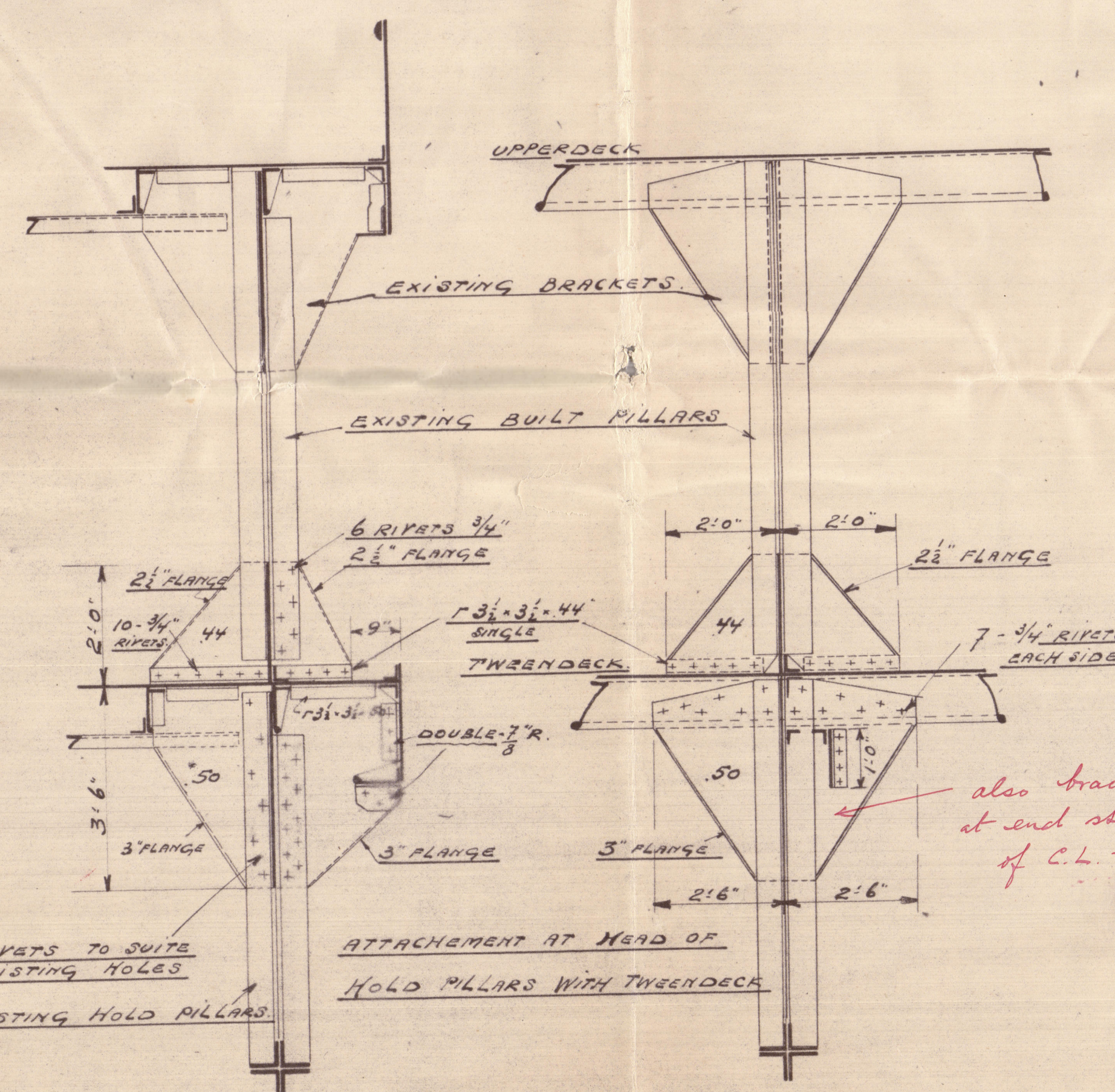
TWEENDECK INT. GIRDER FRAME N° 166 to 175



DETAIL SHOWING STRENGTHENING  
AT HATCH CORNERS

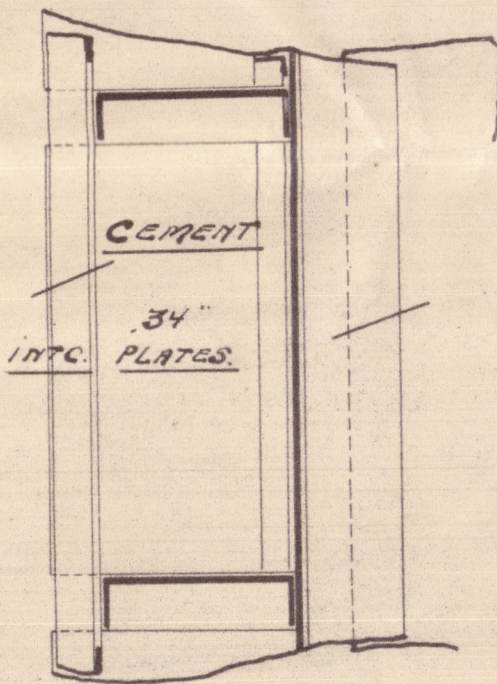
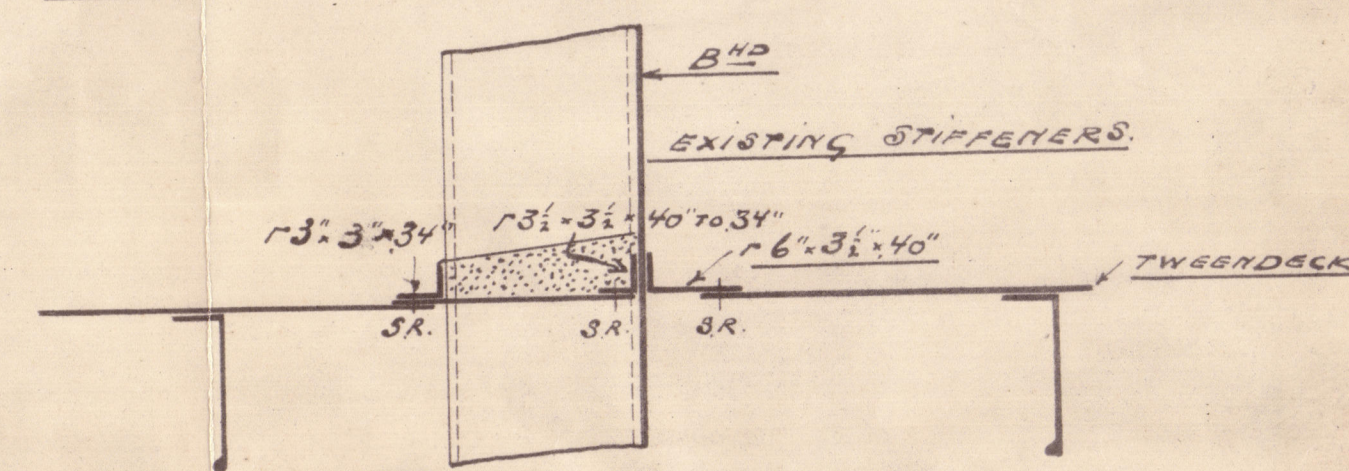


ATTACHMENT OF TWENDECK BUILT PILLARS.  
ON UPPERDECK AND TWENDECK.



- also brackets  
at end stiffeners  
of C.L. bulkhead

METHOD ATTACHEMENT OF  
TWEENDECK PLATING AND BULKHEADS.



17.9.26.

S. S. "NERVIER."

[EX. "WAR ARYAN."]

LENGTH BETWEEN, P.P. 400-0

BREADTH MOULDED. 52' 0"

DEPTH TO UPPERDECK, 31:0

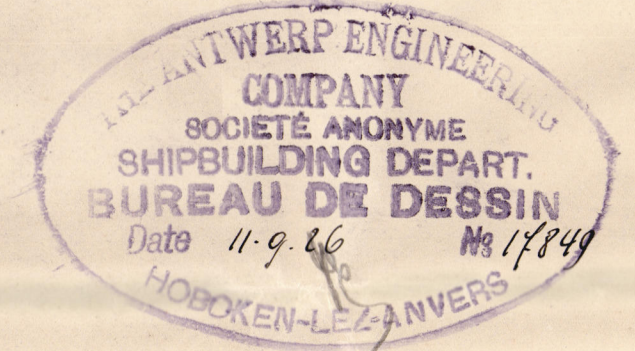
DETAILS OF ADDITIONAL.

TWEENDECK IN HOLDS.

SCALE.  $\frac{1}{2}$ " = ONE FOOT.

LLOYDS CLASS. \*100. A1.

STANDARD VESSEL. "A" TYPE.



C №10-45 CLASS 1  
PLAN №2



S/S. NERVIER  
DETAIL PLAN for SECOND DECK.

A. E. C.° HOBOKEN

Ant. Npt. No. 15019

X/55-0038



© 2021

Lloyd's Register  
Foundation