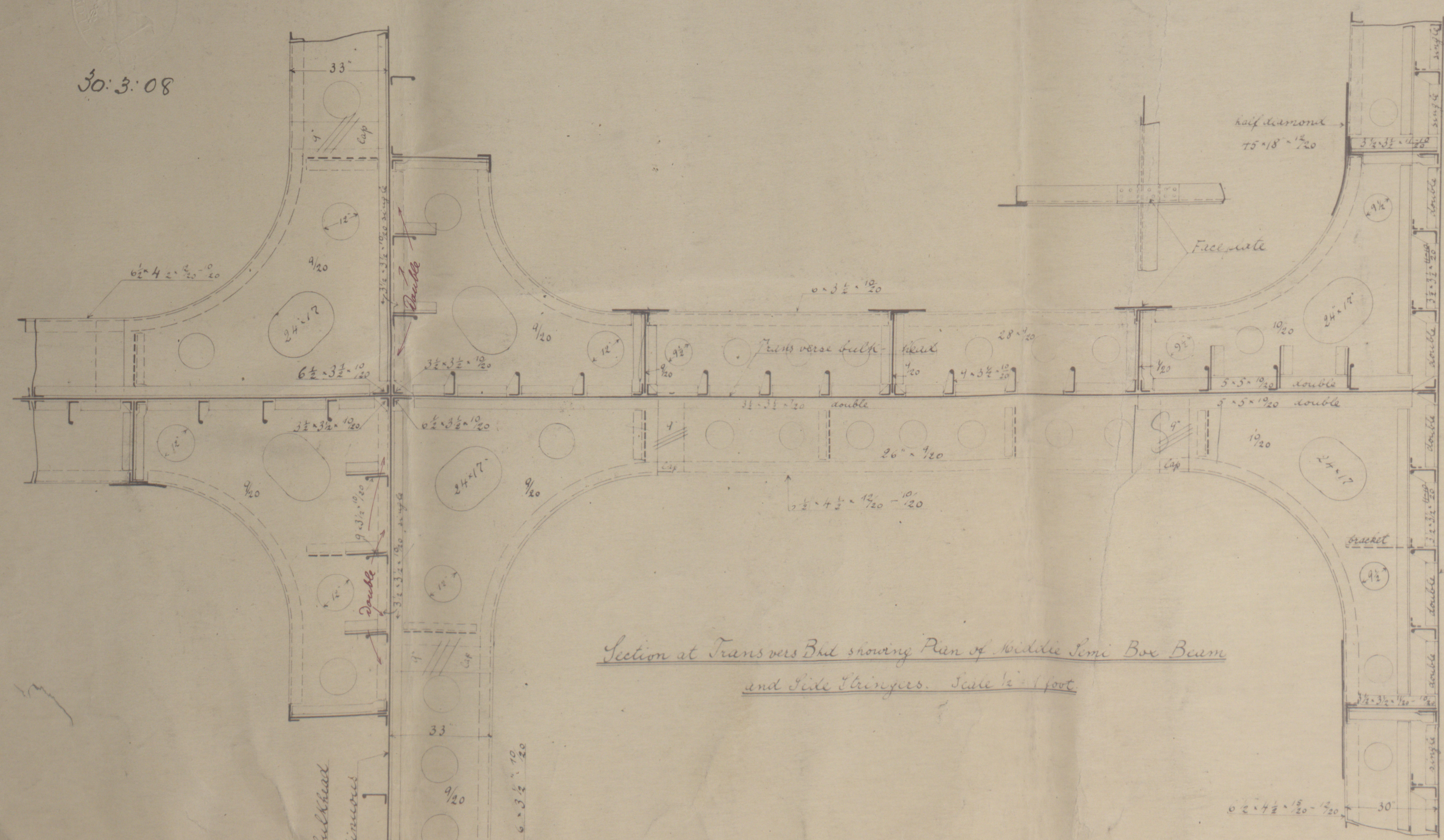
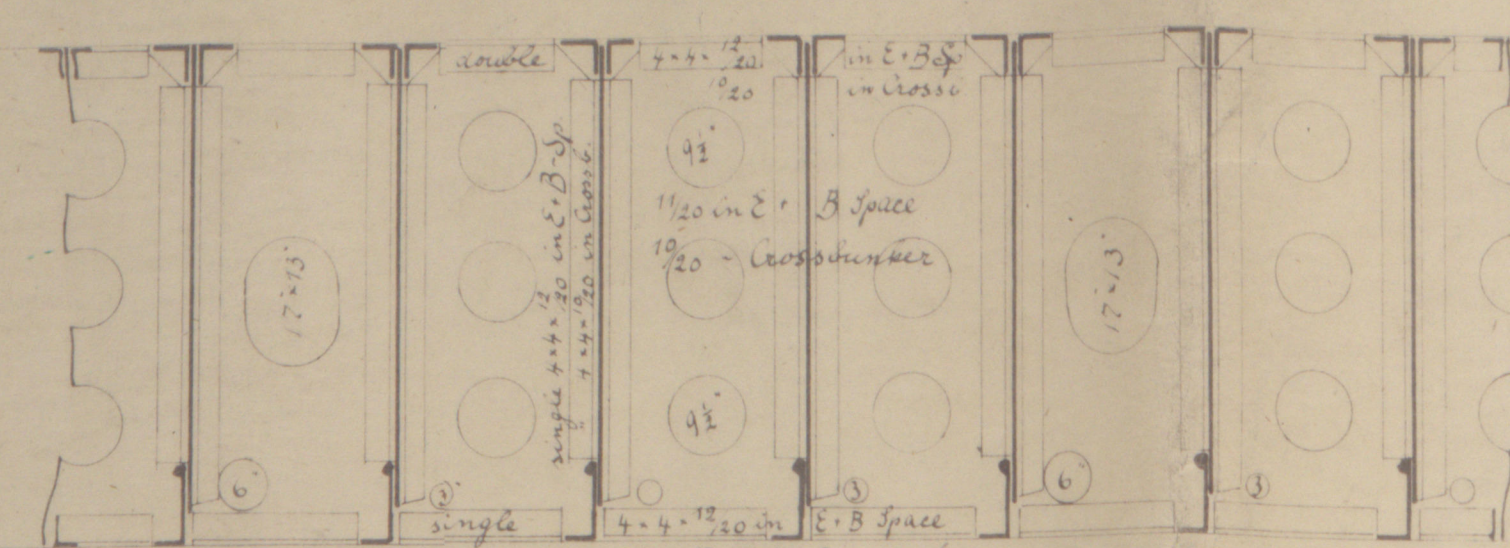


30.3.08

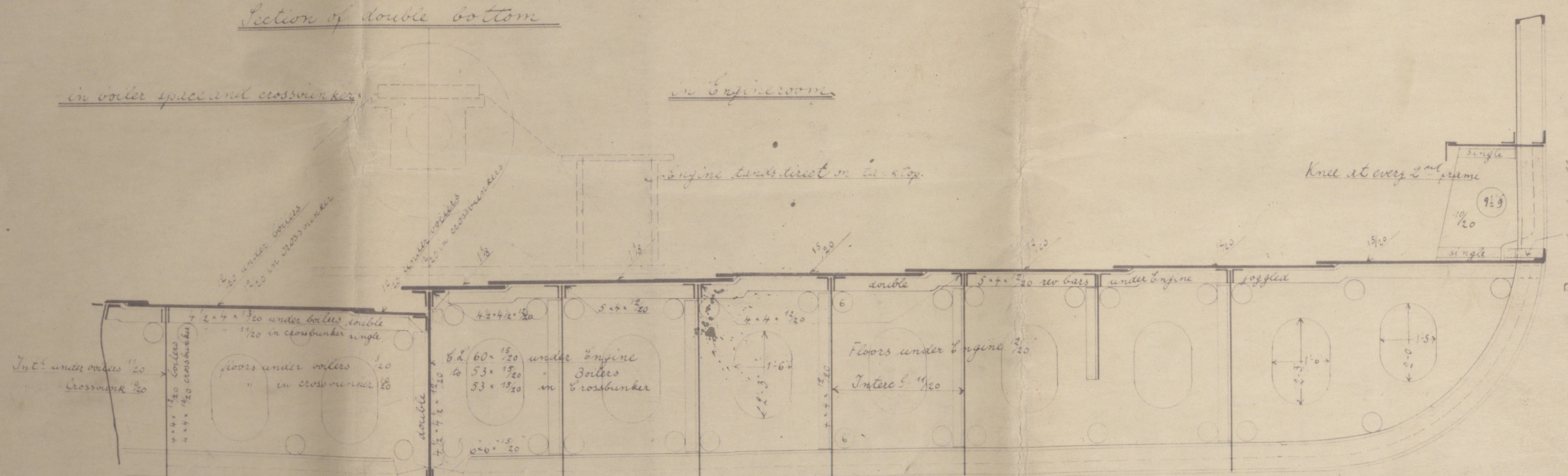


Section at Transverse Bulkhead showing Plan of Middle Long Box Beam and Side Stanchions. June 1st 1908

Intercooler in Double Bottom



Section of double bottom

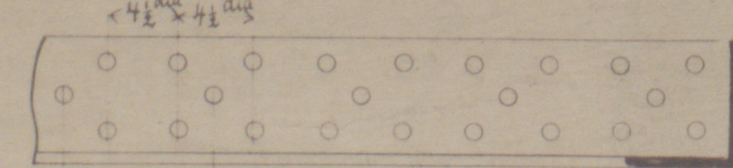


No 286.

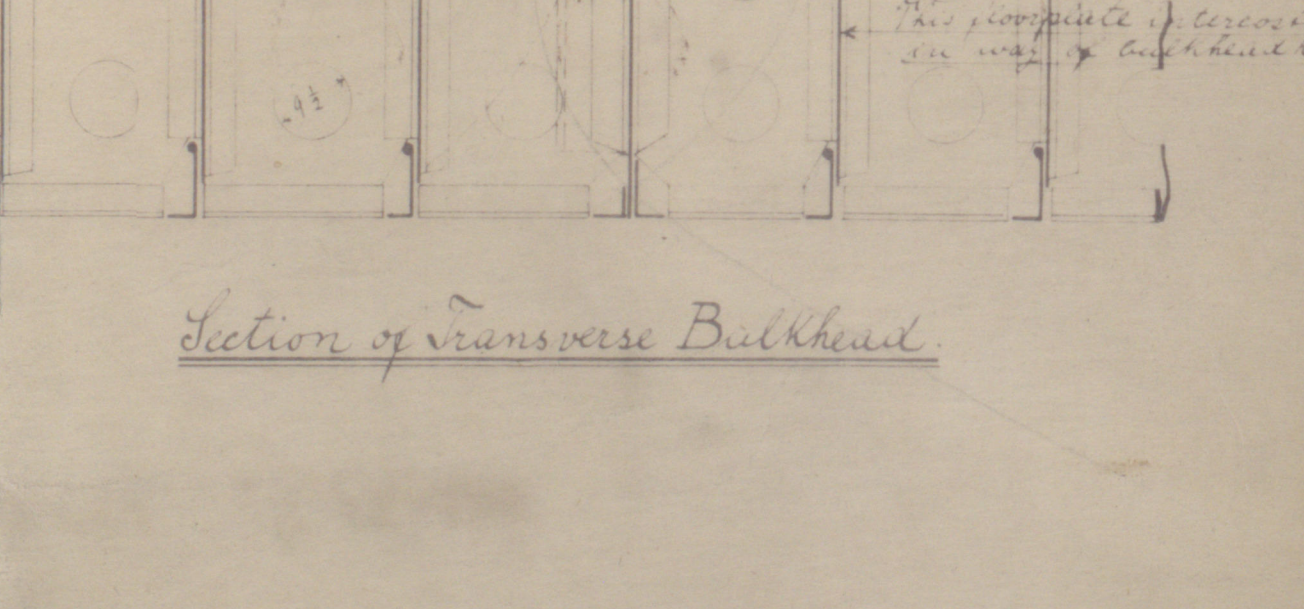
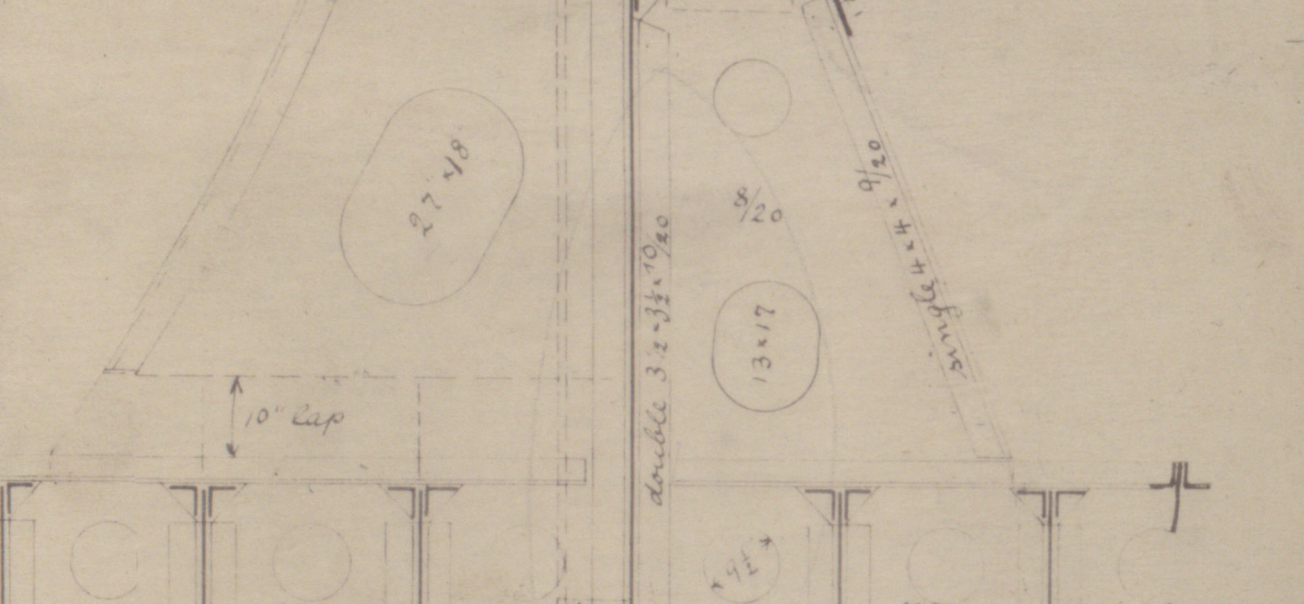
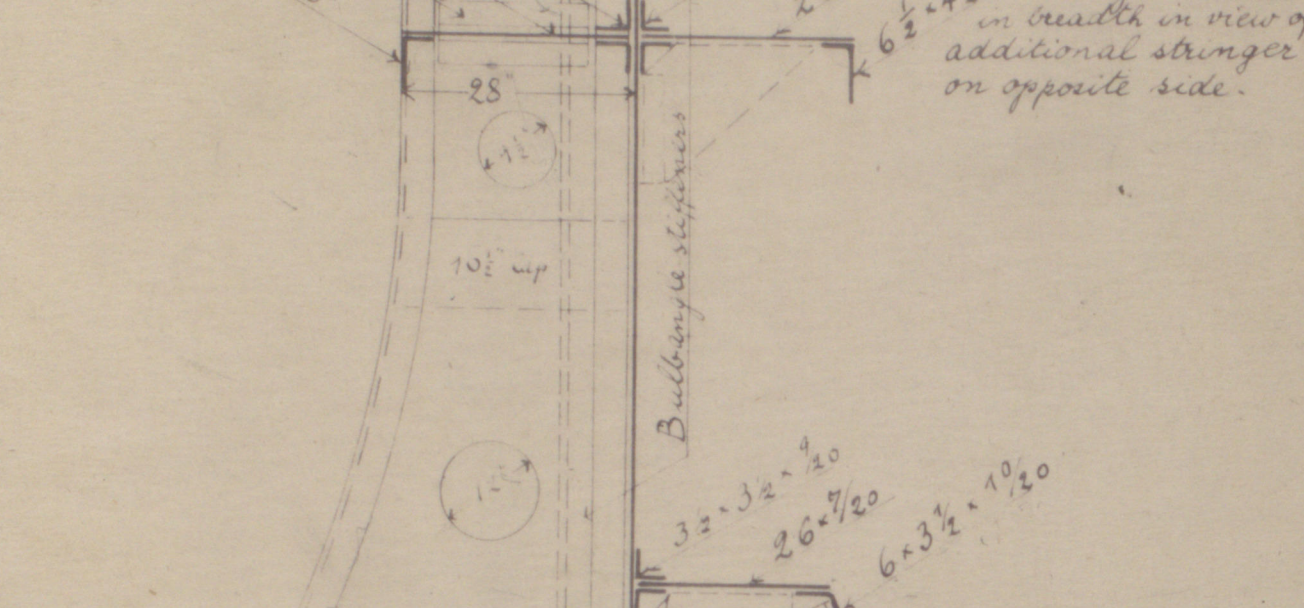
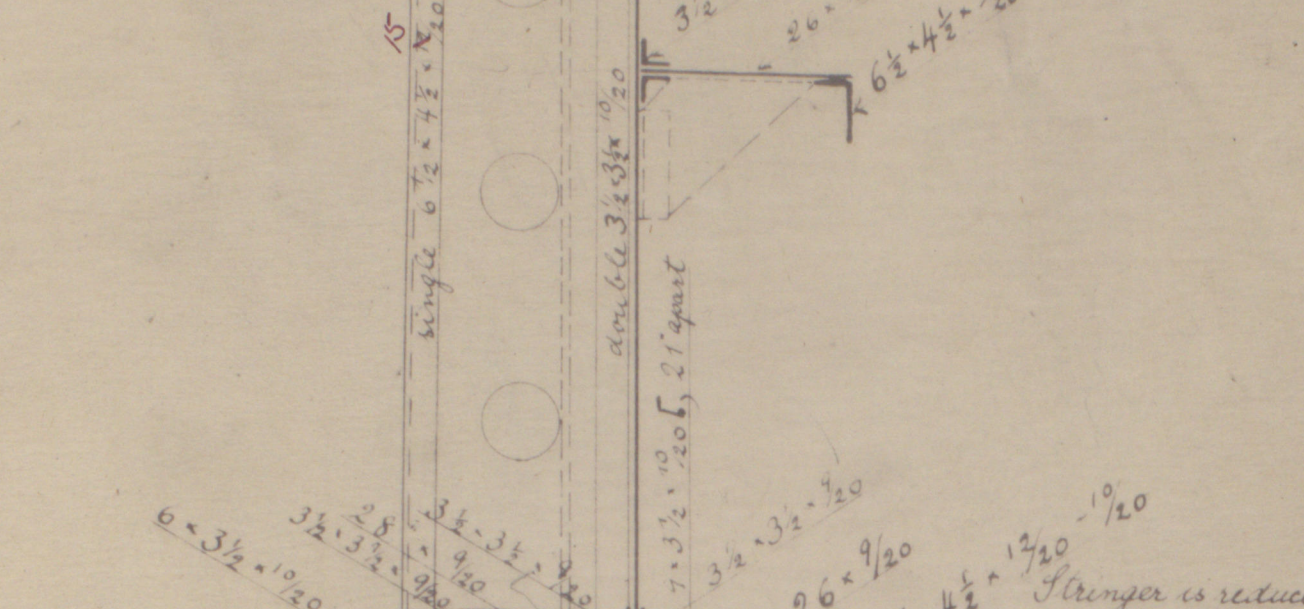
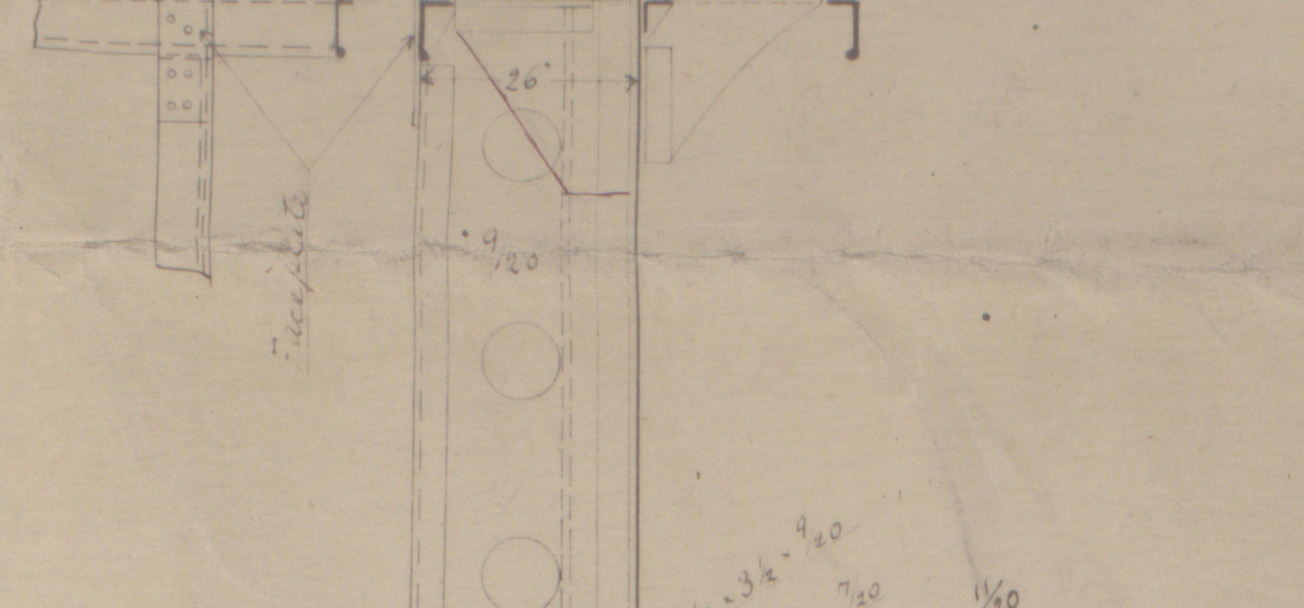
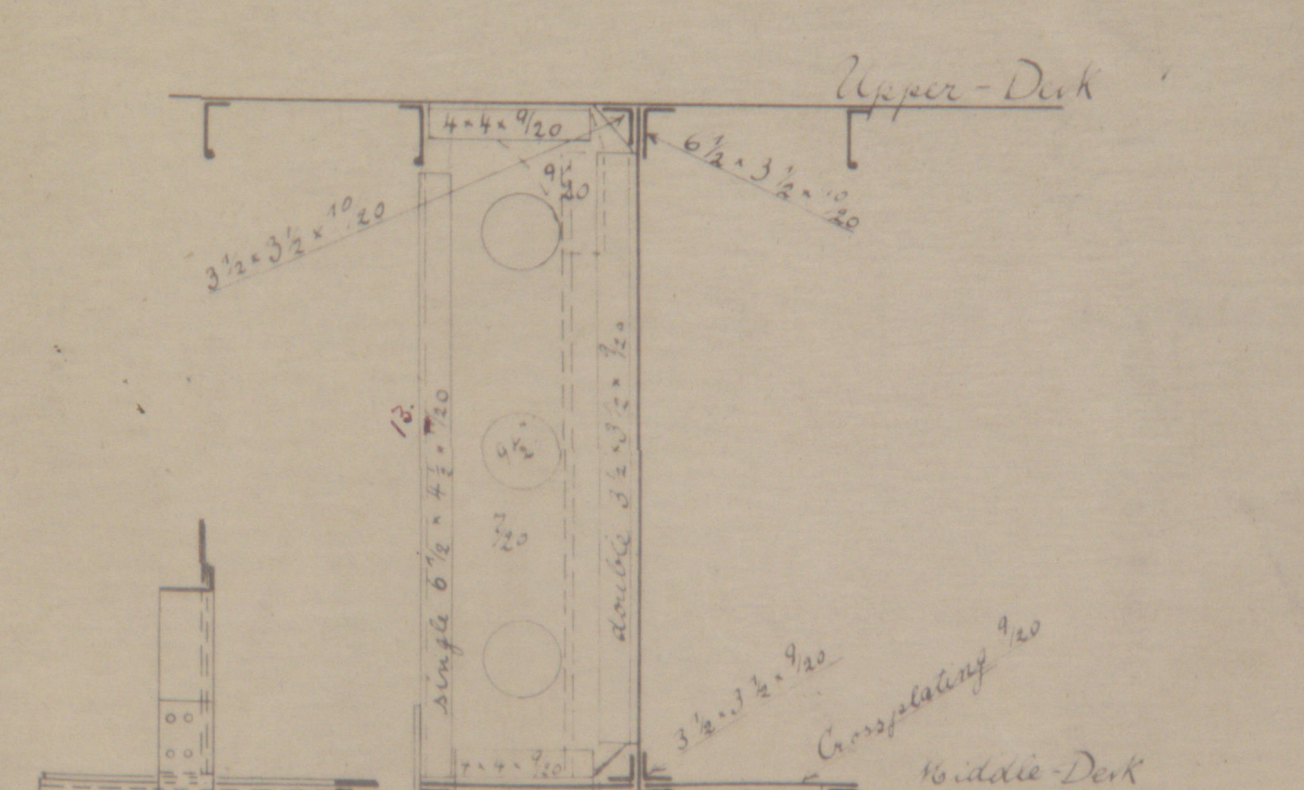
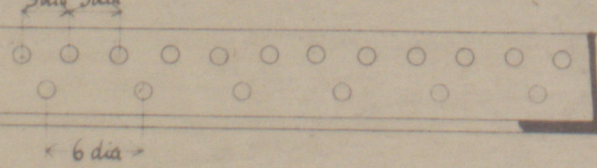
# Equipment No 58758.

3 Bow Anchors (Pattern) 2 of each or steel  
1 Binnacle 25"  
1 Compass 12"  
100 ft. chain and 100 ft. cable 1 1/2"  
100 ft. steel wire rope 5 1/2" dia  
100 ft. Manila 8"

Reinforcing of stringer on Shell - Deck.



Reinforcing of 5 and 6 angles.

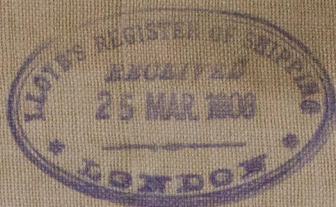




TRANSVERSE SECTION

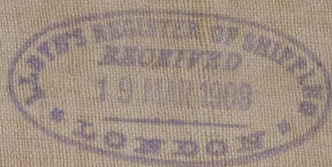
FLENSBURG No 286

HAMB. Letter 23/4/08



HAMBURG Report  
No 10718

S/S "Buffalo"



RETAIN



© 2021

Lloyd's Register  
Foundation

WS49-0225