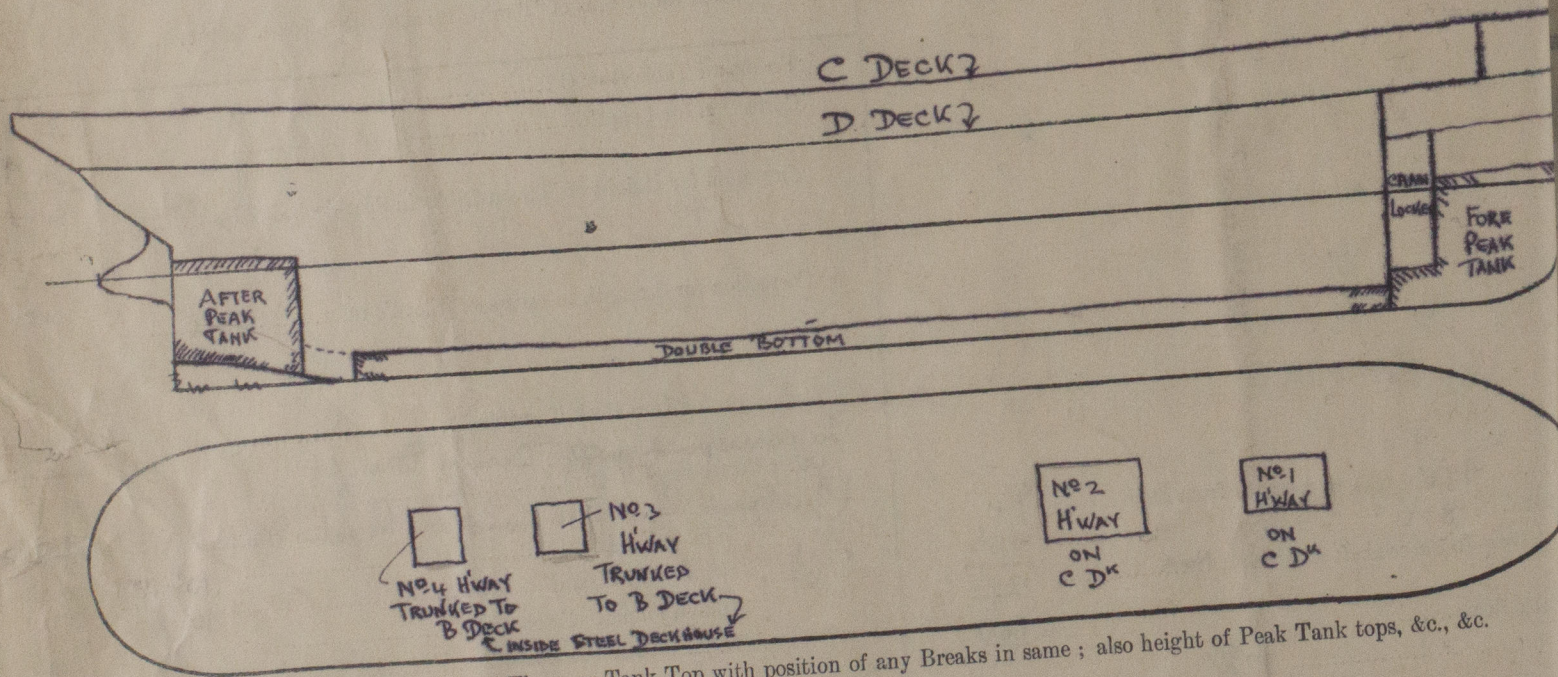


Do all the Frames extend to the top Height in the Spar deck? ☒ Yes -
 Do all the Frames extend to the top height in the Poop? ☒ Yes -
 To what height do the Reverse Frames extend? ☒ Yes -
 Has the Poop an efficient Iron Bulkhead at the fore end? ☒ Yes -
 Give particulars of the means for closing the openings in Bulkhead ☒ Yes -
 Is the Poop connected with the Bridge House? ☒ Yes -
 Give particulars of the means for closing the openings in Bulkhead ☒ Yes -
 What is the thickness of the Bridge Front plating? ☒ Yes -
 Give scantlings and spacing of the Stiffeners ☒ Yes -
 Are bracket plates fitted at each end of the Stiffeners? ☒ Yes -
 Has the Bridge House an efficient Iron Bulkhead at the after end? ☒ Yes -
 How are the openings closed? ☒ Yes -
 Is the Forecastle at least as high as the main or top-gallant rail? ☒ Yes -
 Are the Engine and Boiler openings covered by a Bridge, Poop, or enclosed by a Strong Iron or Steel Deckhouse? ☒ Yes -
 If the openings are not so protected are the exposed parts of the Casings efficiently constructed? ☒ Yes -
 Give thickness of plating; scantlings and spacing of Stiffeners ☒ Yes -
 What is the height of the exposed Casings? ☒ Yes -
 Are the Weather Deck Hatchways efficiently constructed and at least equal to the requirements of Section 28 of the Rules for 1904-5? Give particulars below: -

Awning deck? ☒ Yes -
 Bridge House? ☒ Yes -
 Forecastle? ☒ Yes -
 Has the Bridge House an efficient Bulkhead at the fore end? ☒ Yes -
 and Coaming plate? ☒ Yes -
 Are hor'l. brackets fitted connecting Bridge Bulk'd. with Bulwarks? ☒ Yes -
 Has the Forecastle an efficient Iron or Wood Bulk'd. at after end? ☒ Yes -

Position and Size.	No. 1, 13.5' x 13.12' Ft. ON C D th	No. 2, 13.78' x 16.44' Ft. ON C D th	No. 3, 9.18' x 11.81' Ft. ON B D th	No. 4, 9.18' x 11.81' Ft. ON B D th	Ship.
Item.	Ship.	Ship.	Ship.	Ship.	Ship.
Height above top of DECK	31 ^{ins}	31 ^{ins}	31 ^{ins}	31 ^{ins}	
Thickness	.45 ^{ins}	.45 ^{ins}	.45 ^{ins}	.45 ^{ins}	
SHIFTING BEAMS OR WEB PLATES.	2	2	1	1	
Section and Scantlings	14 x 32	16 x 36	12 x 30	Same as No. 3 H'WAY	
Material	ANGLES 3 x 3 x .45 ^{ins} STEEL	3 x 4 x .45 ^{ins} STEEL	STEEL		
* FORE AND AFTERS.					
Number	NONE	NONE	NONE	NONE	
Section and Scantlings					
Material					
HATCHES Thickness	2 1/2 ^{ins}	2 1/2 ^{ins}	2 1/2 ^{ins}	2 1/2 ^{ins}	
Remarks	SOLID	SOLID	SOLID	SOLID	

* When the Fore and Afters are of wood the depth should be stated from the underside of the hatches.
 (If the sill of the lowest side scuttle will be less than 6 inches above the Indian Summer Load Line if assigned under the tables, state vertical distance from top of deck at side amidships to lower edge of lowest side scuttle.)



Show hereon line of Floors or Tank Top with position of any Breaks in same; also height of Peak Tank tops, &c., &c.

State any special features in the construction of the Vessel

ARRANGEMENT OF SIDE SCUTTLES, SCUPPERS.
 SCUTTLES OF UNDERWATER TYPE

SEE PLAN ATTACHED SHOWING
 TEST CERTIFICATE ATTACHED OF 56

Builder's name and yard number **ANSALDO SOCIETA - ANONIMA NO 283**
 Names of sister vessels ☒ Yes -
 Owners **SOC. ITALIANA SERVIZI MARITTIMI**
 Address **GENOA**

Fee £ ☒ : ☒ : ☒
 Received by me ☒
 FREEBOARD ASSIGNED BY REGISTRO IT
 Lloyd's Register Foundation