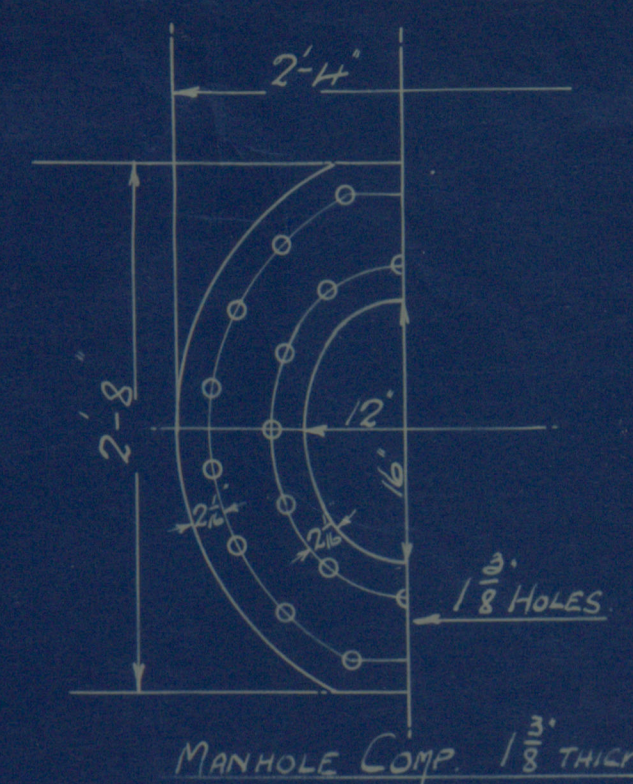


CENTRAL MARINE ENGINE WORKS,  
MILWAUKEE, WIS.

# BOILERS NO. 816.

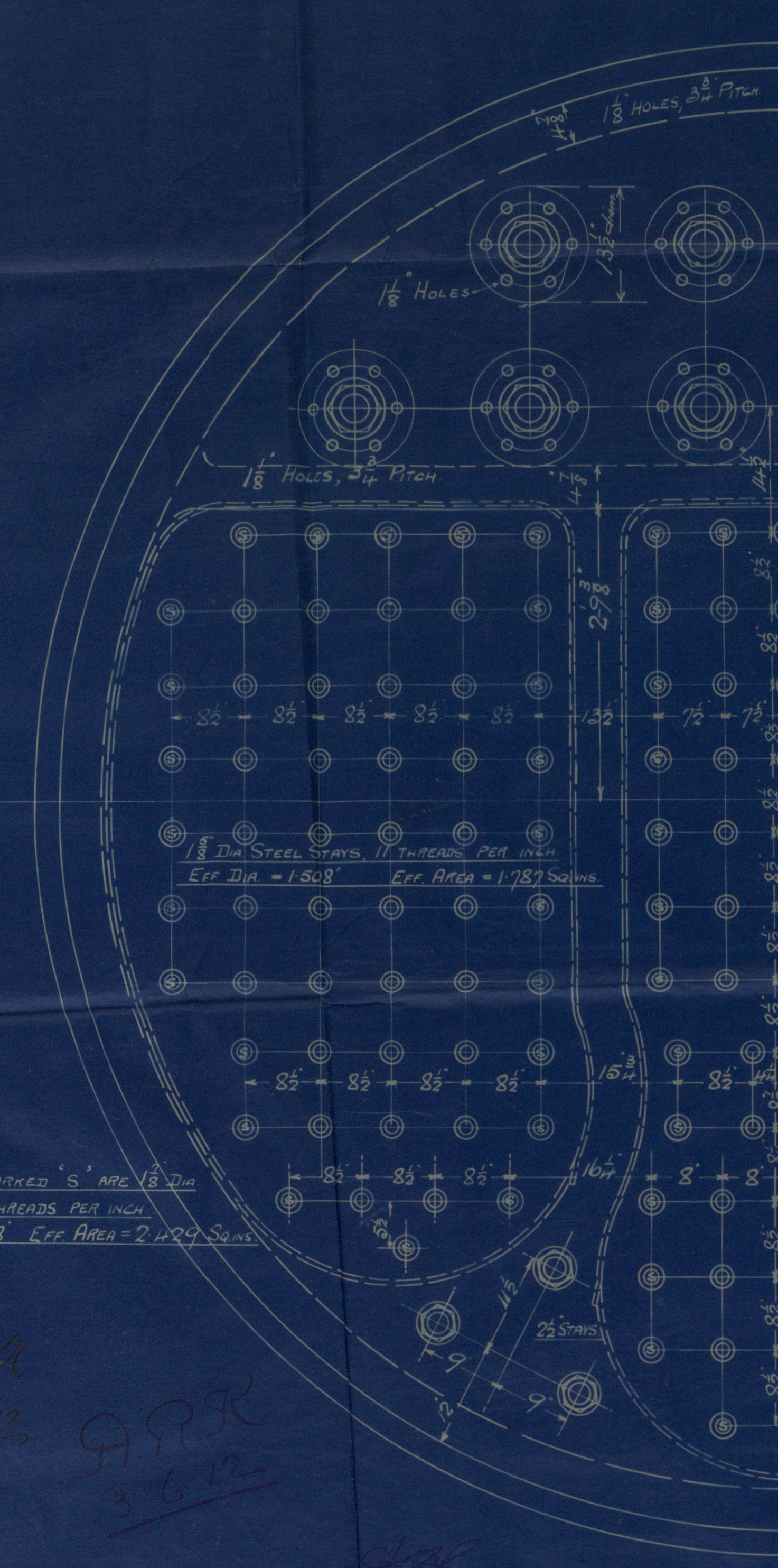
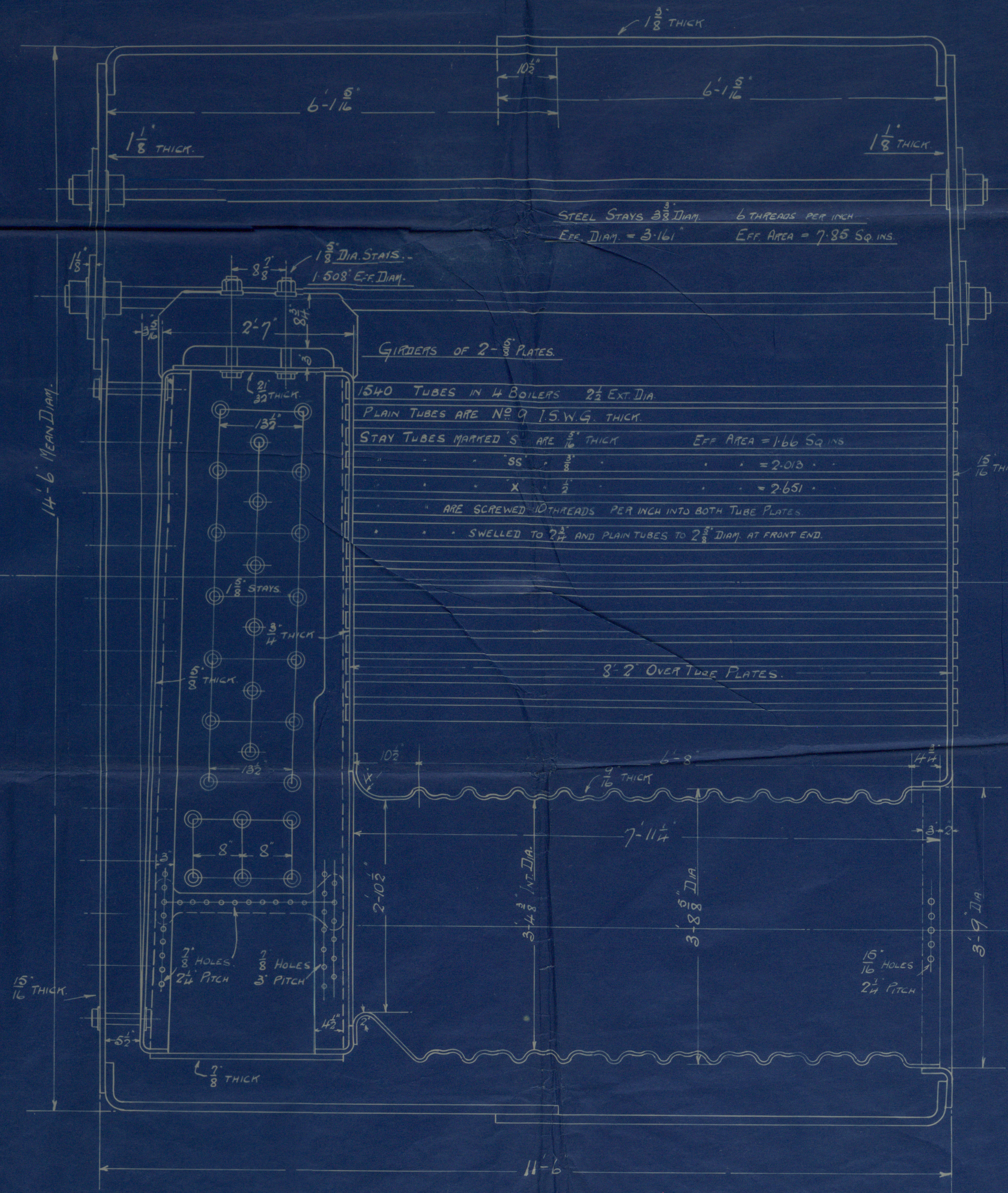
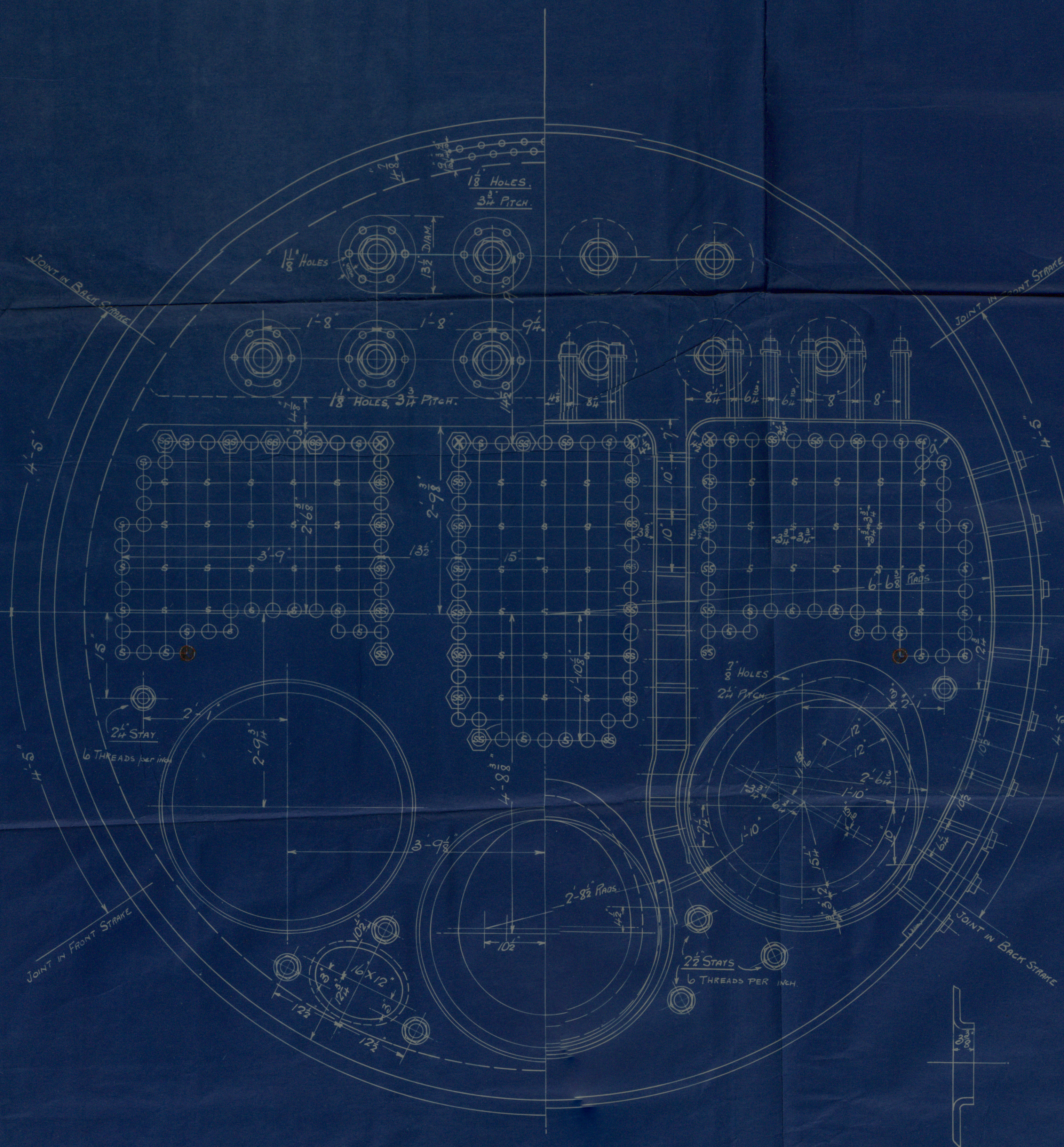
WORKING PRESSURE = 124.5 KILOS PER SQ. CM.  
= 180 LBS. TO BOARD OF TRADE + LLOYD'S + DUTCH LAW.  
SCALE 1" = 1 FOOT.  
4 BOILERS.  
TO BE FITTED WITH HOWDEN'S SYSTEM OF FORCED DRAUGHT.



POSITION OF TOP MANHOLES.  
SCALE 1/2" = 1 FOOT.

Shell plates to have a tensile strength of 27 to 30 tons.

Butt straps	"	"	27 to 32 tons.
Longitudinal stays	"	"	28 to 32 tons.
Other plates and stays	"	"	26 to 30 tons.
Particulars of 4 Boilers.			
Heating surface of Tubes	- -	8040	Sq. feet
" " Furnace	- -	573	" "
" " Comb. Chamber	- -	801	" "
" " Back Lake Plate	- -	183	" "
Total Heating Surface	=	9597	Sq. feet.
Grate Surface	=	223	Sq. feet.



NO 816.

26808.





1900-1901

Central No 816

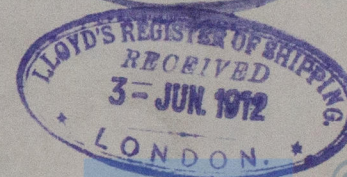
180 lbs

Days 00 No 816

S.S. "Boston."

JPL Report No. 14575.

RETAIN



© 2021

Lloyd's Register  
Foundation

W547-0061



Lloyds

W547-0061



© 2021

Lloyd's Register  
Foundation