

# BOILER CONTRACT N° 837-8-9-40

Messrs ARMSTRONG WHITWORTH & Co. Ship Nos 980-87-89-92.

To Be Constructed To Pass LLOYDS REQUIREMENTS.

BOILERS DESIGNED TO SCANTLINGS OF THE BRITISH MARINE ENGINEERING DESIGN & CONSTRUCTION COMMITTEE.

3, BOILERS OFF FOR EACH CONTRACT N°

SCALE: 1" = 1, FOOT.

CHECKED BY  
DATE 31/8/1920  
TIME CHARGED TO N° 1

PLAN OF SHELL RIVETING.  
PLATE = 85.3%  
RIVET = 89.5%

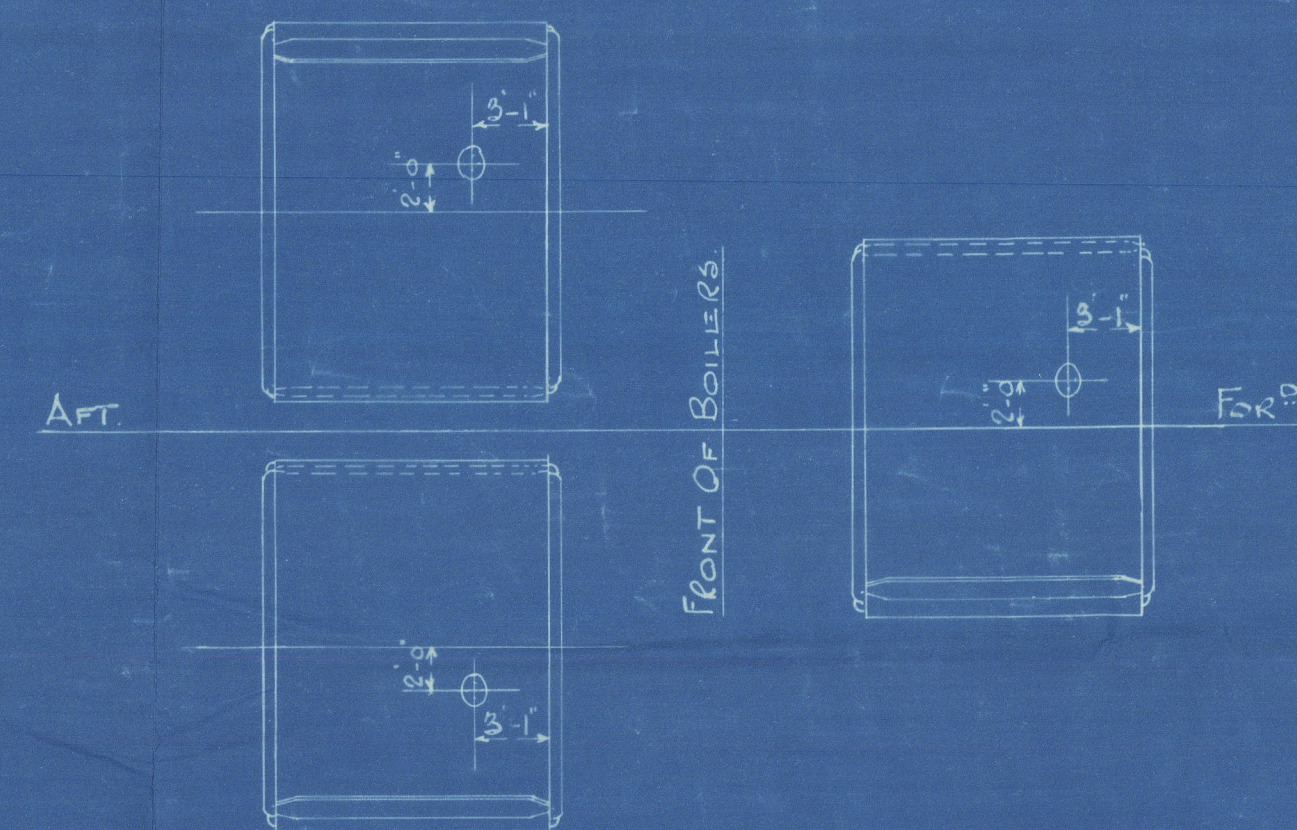
## MATERIALS

DESCRIPTION	MATERIAL	TENSILE STRENGTH
SHELL PLATES & BUTT STRAPS	STEEL	30 TO 34, TONS D'
MANHOLE DOUBLING & CO. GIRDERS	"	28 TO 32 " D'
WRAPPER & FLANGED PLATES	"	26 TO 30 " D'
LONGITUDINAL STAYS	"	28 TO 32 " D'
COMBUSTION CHAMBER SCREWED STAYS	IRON	21½, TONS D', MINIMUM
RIVETS	STEEL	26 TO 30, TONS D'
TUBES	IRON	

## HEATING SURFACE

TUBES	2167, SQ. FEET
FURNACES	173 "
COMBUSTION CHAMBERS	250 "
FRONT TUBE PLATE	48 "
BACK TUBE PLATE	42 "
TOTAL ONE BOILER	2680 "
TOTAL THREE BOILERS	8040 "

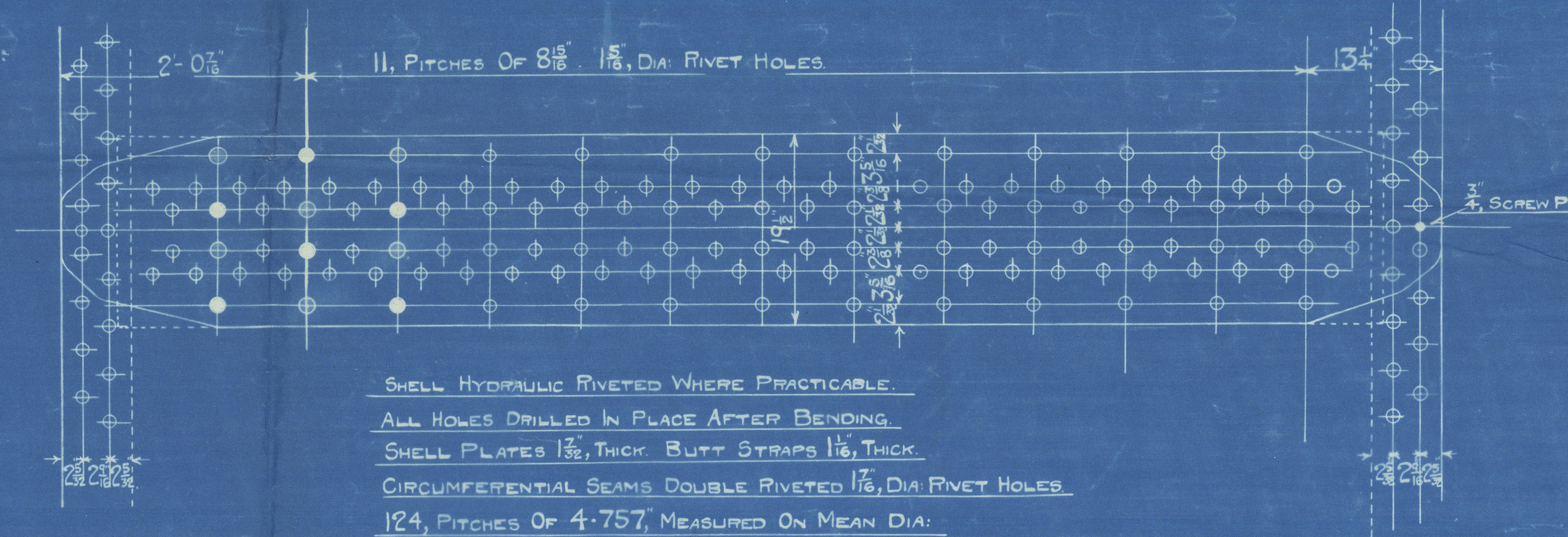
WORKING PRESSURE	130, LBS. PER SQ. INCH
TEST PRESSURE	320, " " " "



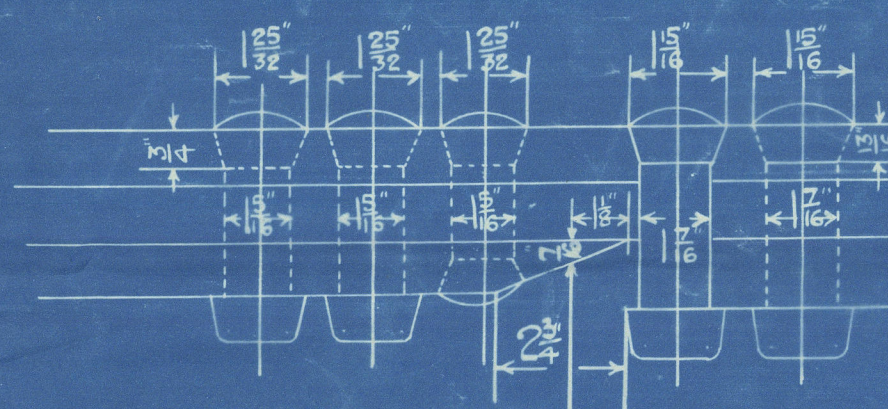
KEY PLAN SHOWING POSITION OF MANHOLES & BUTT STRAPS 26/9/1921.

## SPACE GEARS

1 STAY TUBE WITH NUT FOR EACH CONTRACT N°  
20 PLAIN TUBES

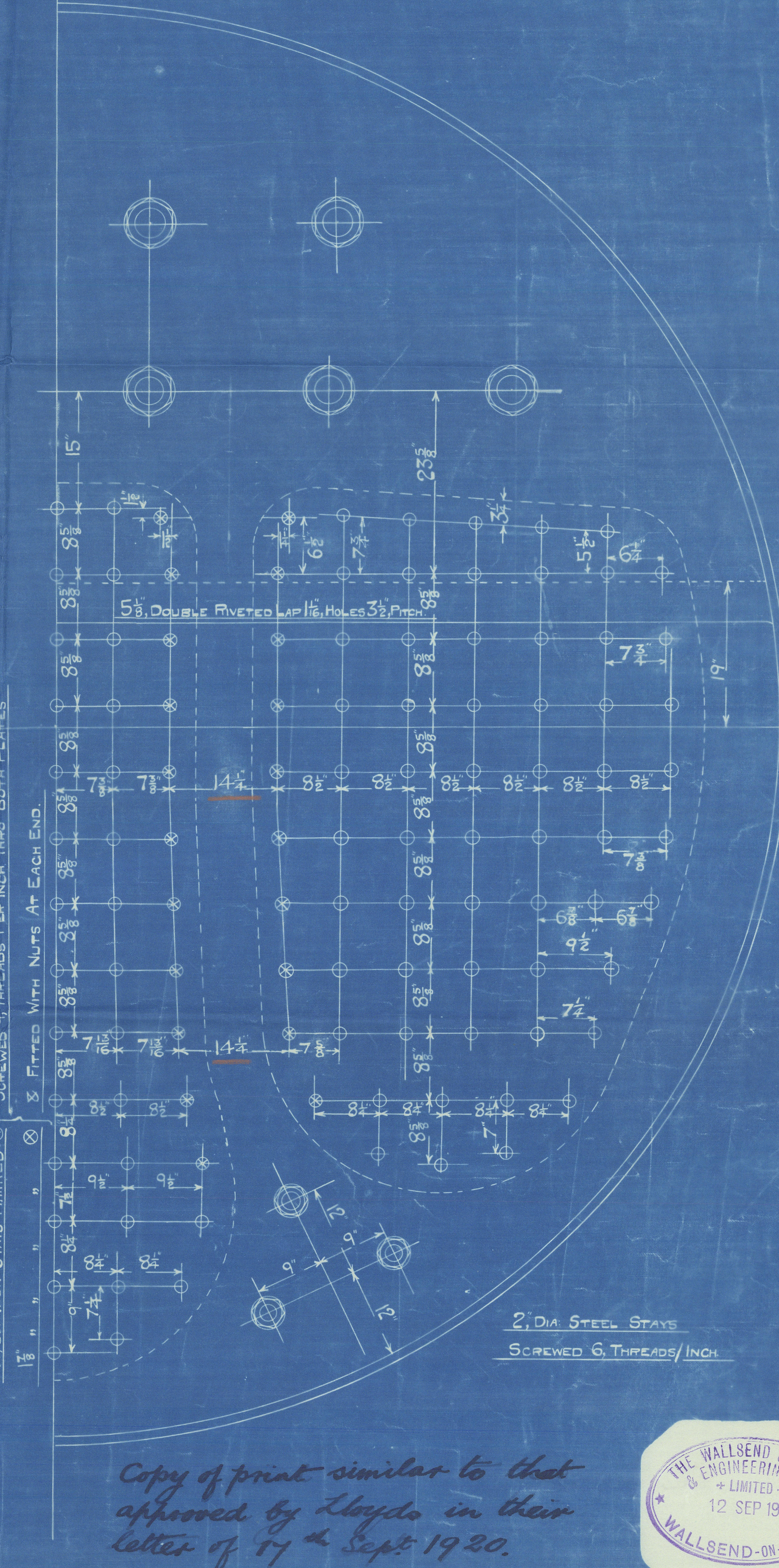
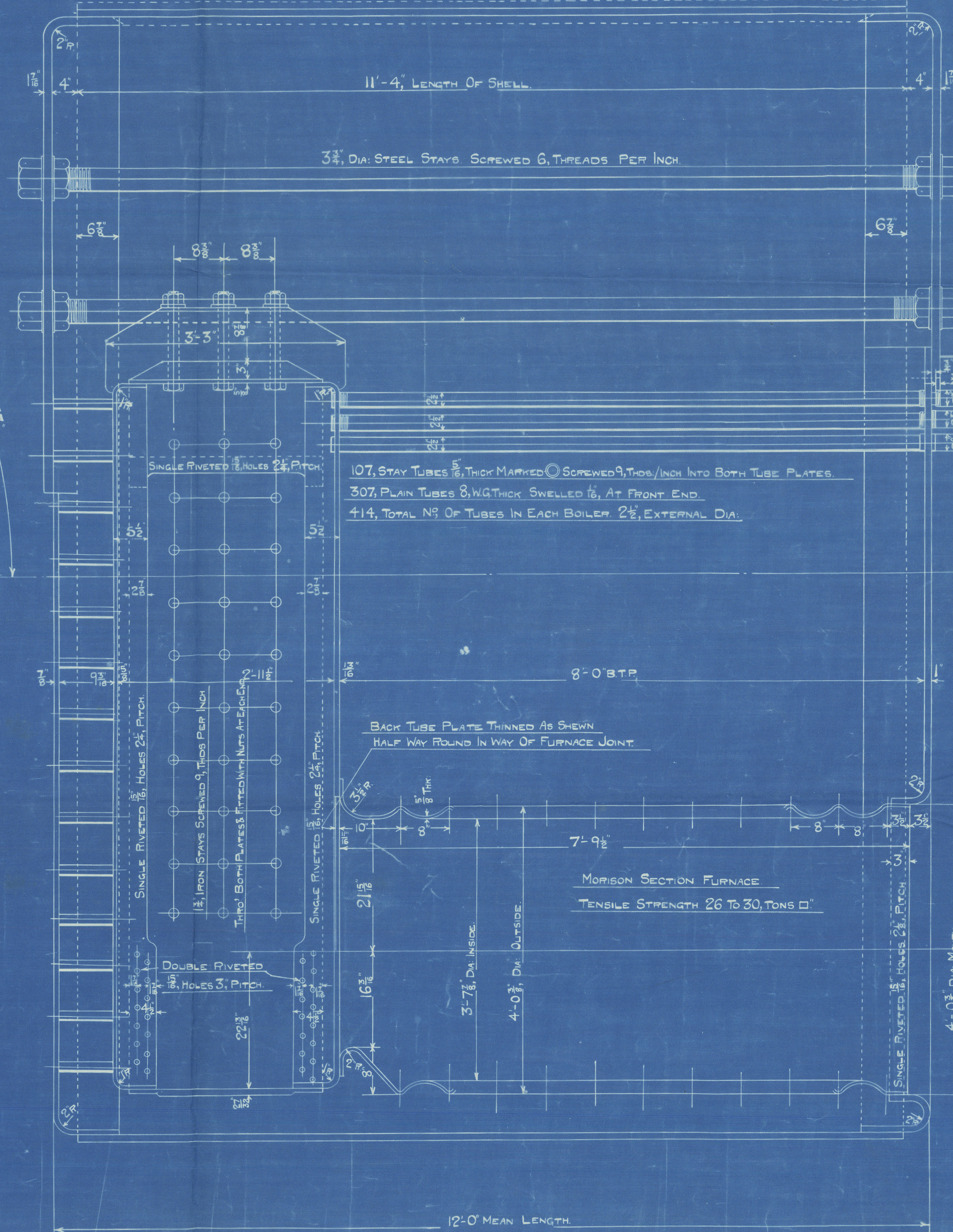
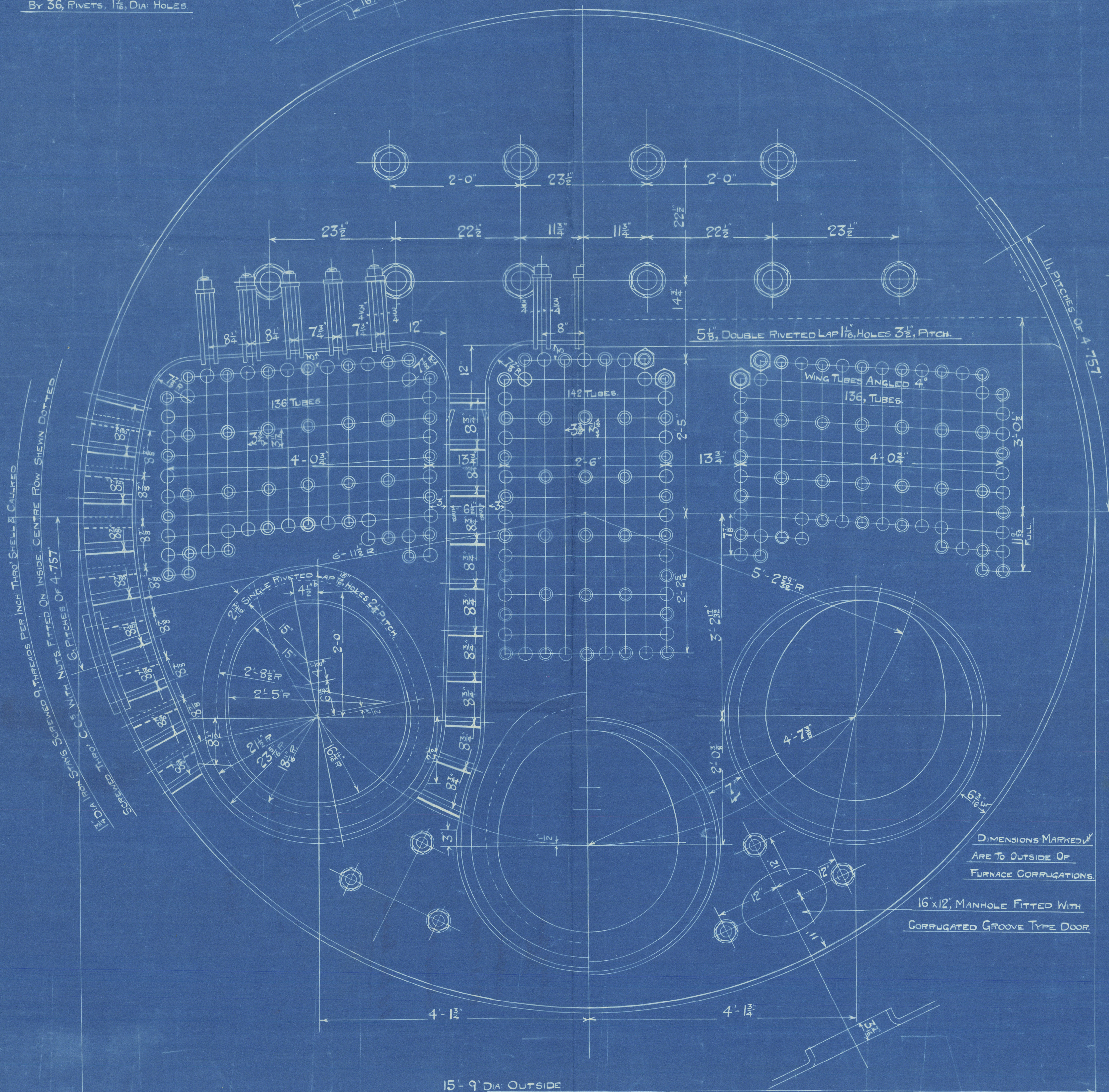


SHELL HYDRAULIC RIVETED WHERE PRACTICABLE.  
ALL HOLES DRILLED IN PLACE AFTER BENDING.  
SHELL PLATES 1 1/2" THICK BUTT STRAPS 1 1/2" THICK.  
CIRCUMFERENTIAL SEAMS DOUBLE RIVETED 1 1/2" DIA. RIVET HOLES.  
124, PITCHES OF 4-7 1/2", MEASURED ON MEAN DIA.



DETAIL OF TUCKING IN OF INNER BUTT STRAP AND SHELL RIVETING.

16x12, MANHOLE FITTED WITH CORRUGATED GROOVE TYPE DOOR DOUBLING RIVETED TO SHELL BY 36 RIVETS, 1 1/2" DIA. HOLES.



Copy of print similar to that approved by Lloyd's in their letter of 17th Sept. 1920. except dimension underlined in red - viz. distance between marginal stays on Boiler back, increased by 1/2" (from 13 1/2" to 14 1/2").





Copy of Boilers  
Plan

Waltham

837-8-9-840

Approved 23/9/20

O.D. Sam Rosendo

S. S. Sam Rosendo

NEWCASTLE ON TYNE.

Report No. 76168.

RETAIN

LR

© 2020

Lloyd's Register  
Foundation