



SCOTIA ENGINE WORKS

BOILER

SCALE: 1 INCH TO ONE FOOT

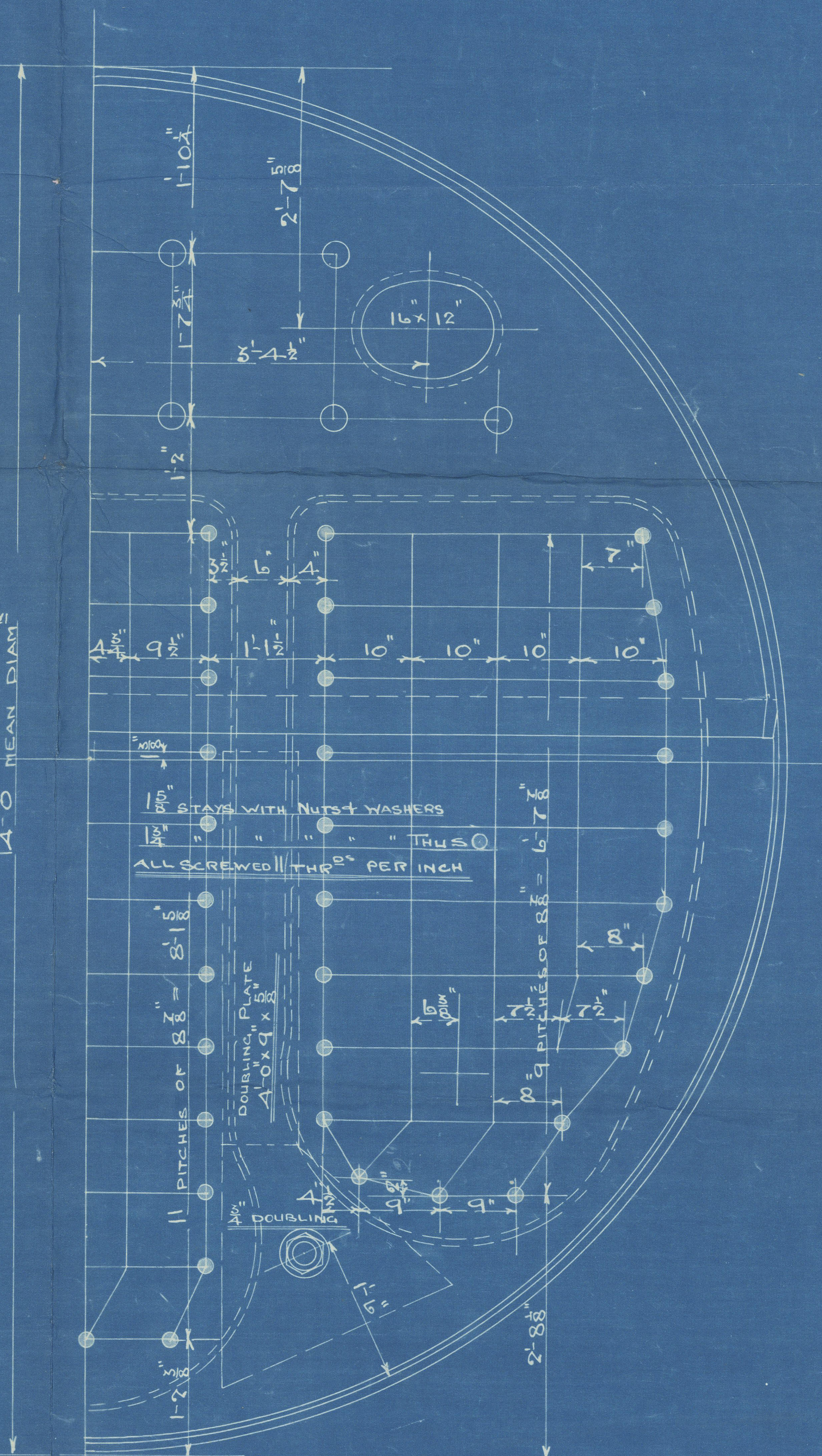
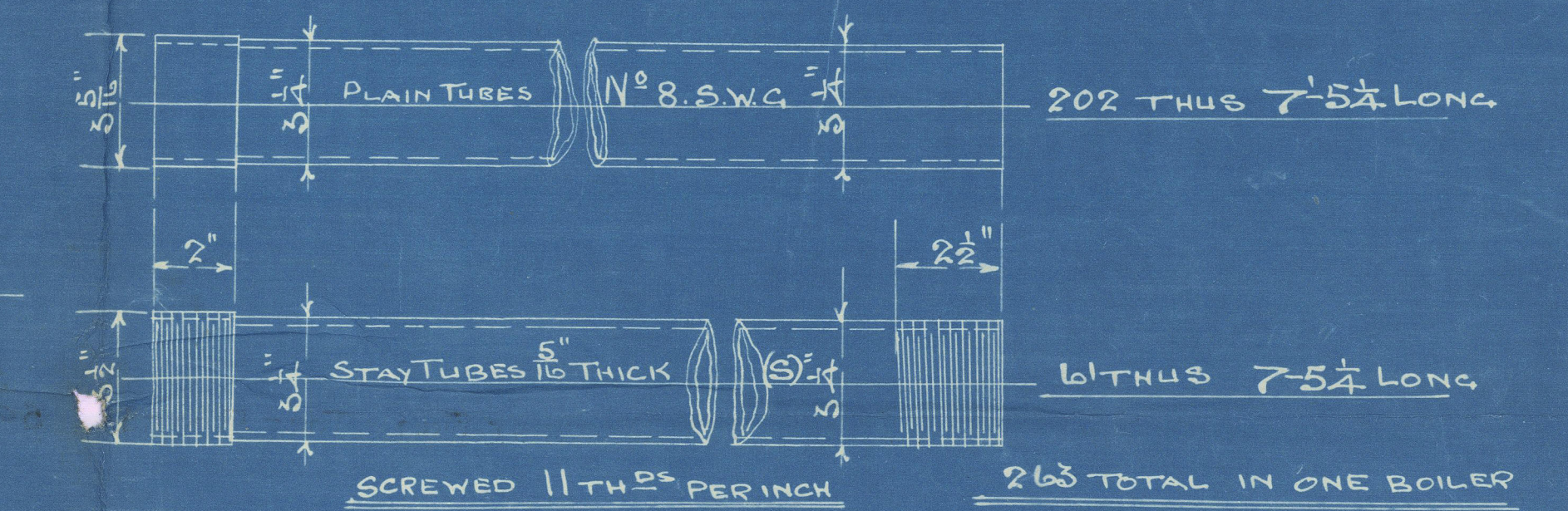
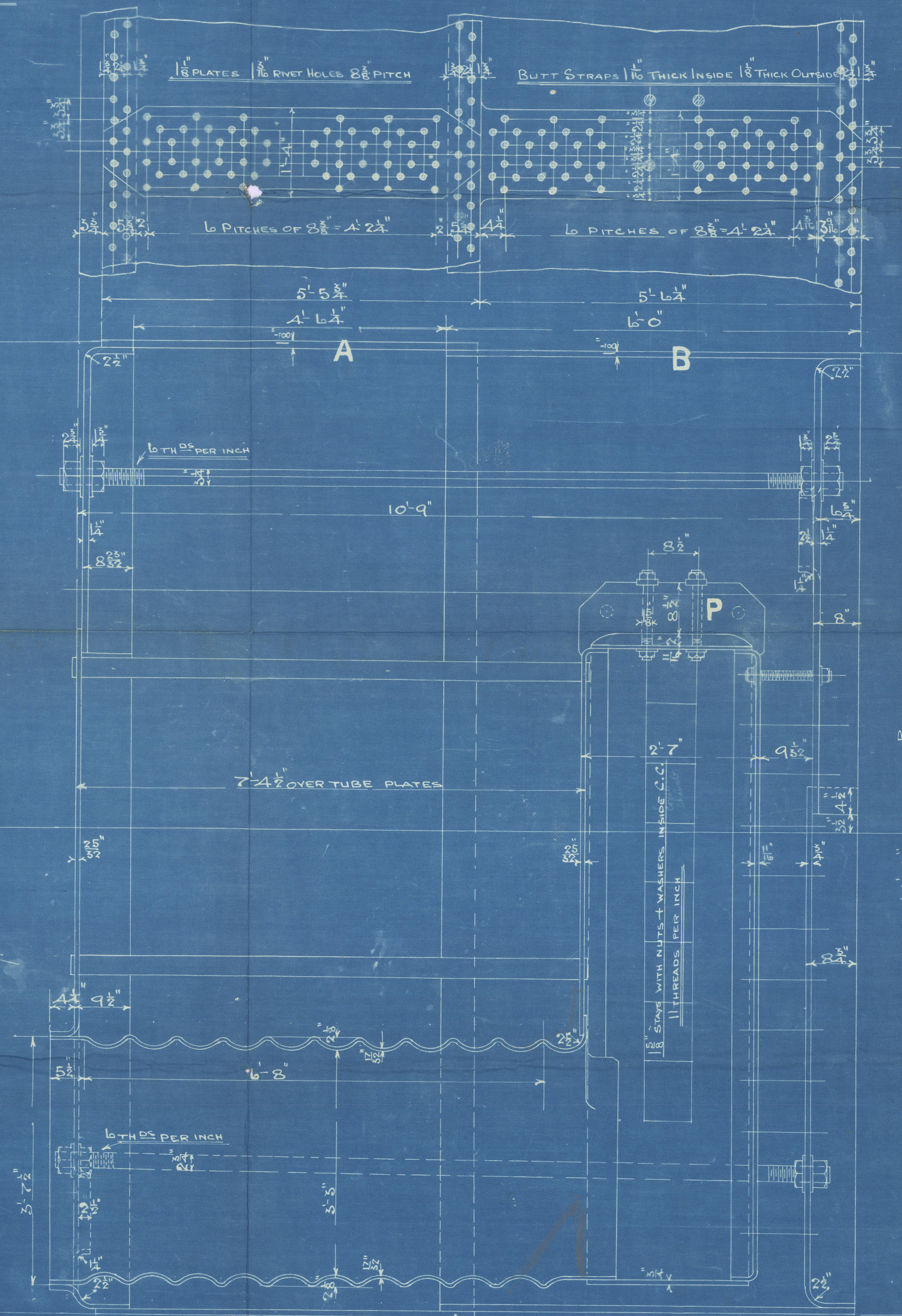
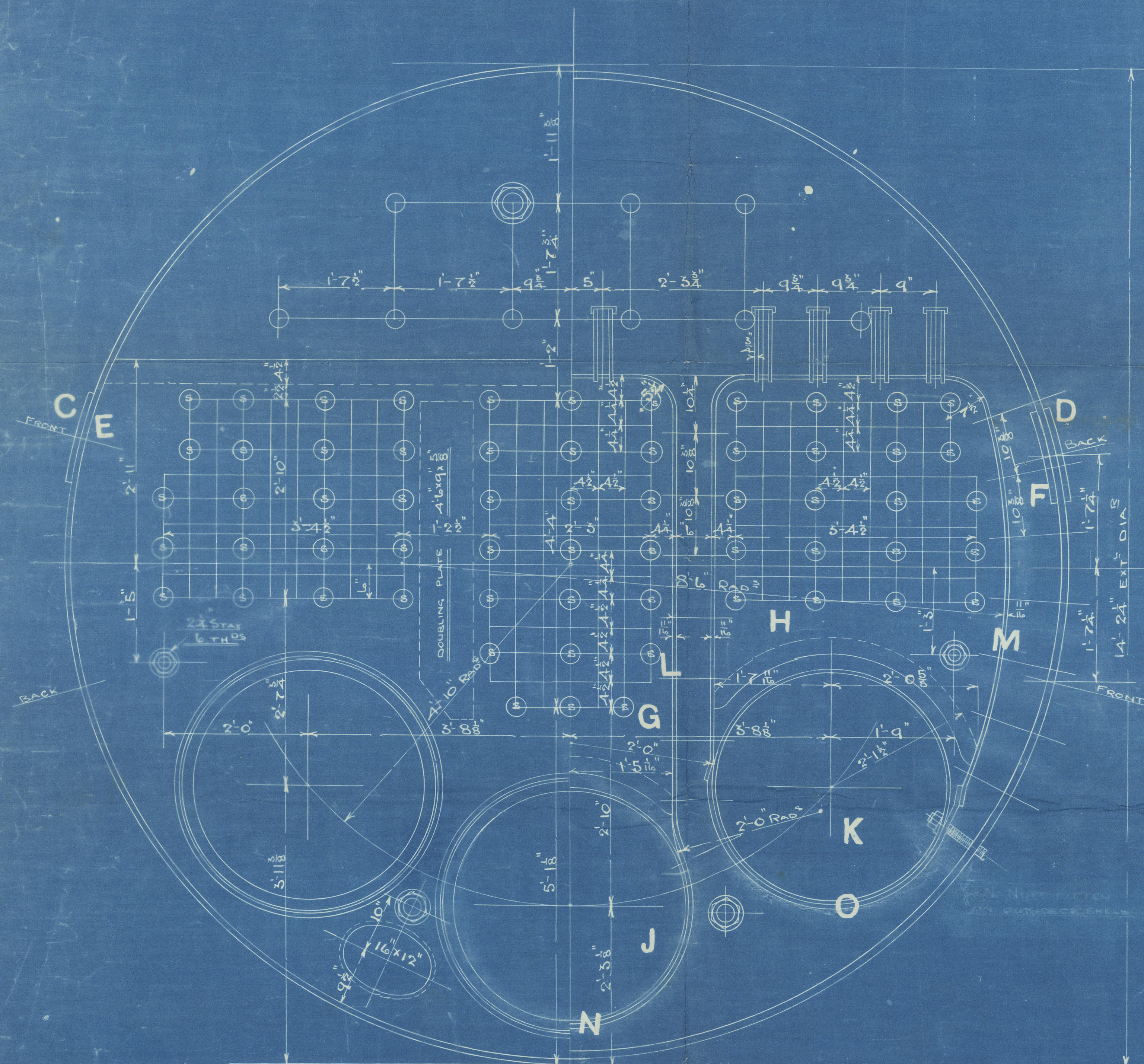
WRITTEN DIMENSIONS ONLY TO BE TAKEN

12/2/10

TENSILE STRENGTH OF SHELL PLATES, BUTTSTRAPS, GIRDER PLATES
+ LONGITUDINAL STAYS 28 TO 32 TONS PER SQ INCH
ALL OTHER PLATES, STAYS + RIVETS 26 TO 30 " " "
ALL PLATES, STAYS + RIVETS OF STEEL
ALL TUBES OF WROUGHT IRON
ALL RIVET HOLES DRILLED IN PLACE

WORKING PRESSURE 180 LBS PER SQ INCH

TOTAL HEATING SURFACE (WITHOUT FRONT TUBE PLATES) 5940 S



CONTRACT No 306

3 OFF

9/2/10
12/2/10
10/2/10

Richardson
Westgarth & Co

306

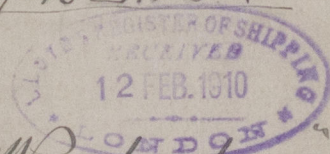
North's S B 6' 4"
178.

180
Duplicate of 300

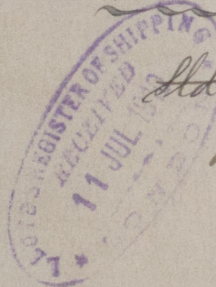
2^d 2859

360 tons

7-9-10 E.I.S.

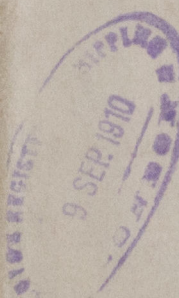


Wearbridge



Old Rpt. 24687

hwe. 59418.



RETAIN

W545-0256



© 2020

Lloyd's Register
Foundation