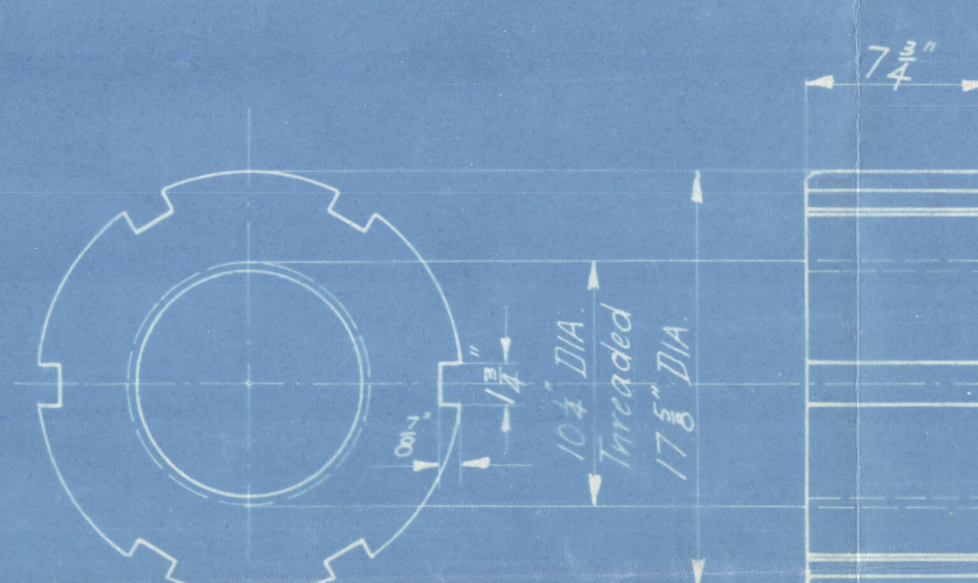
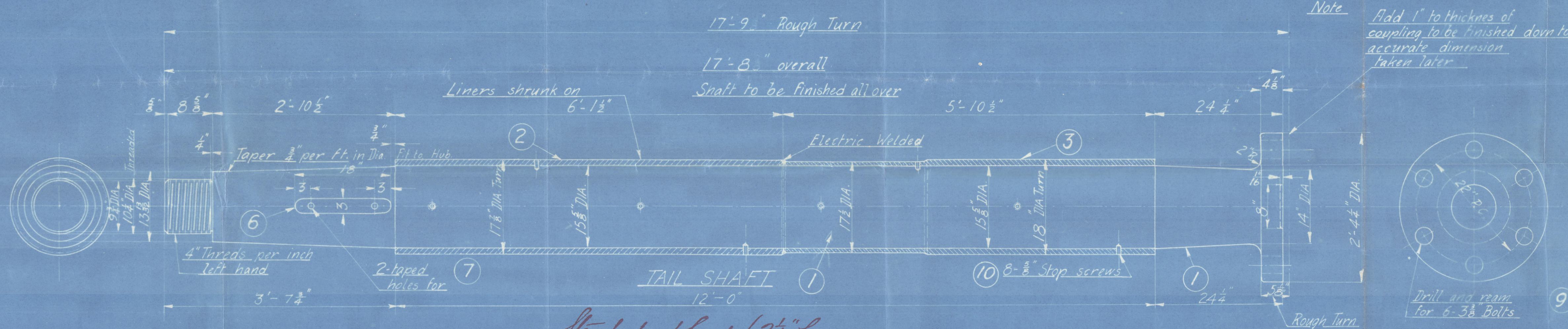
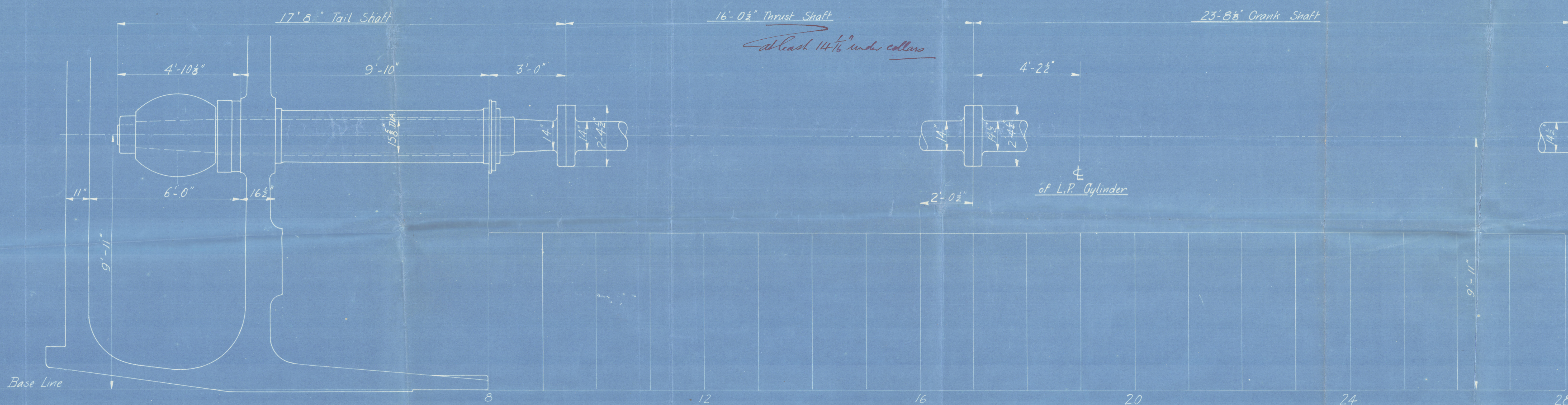
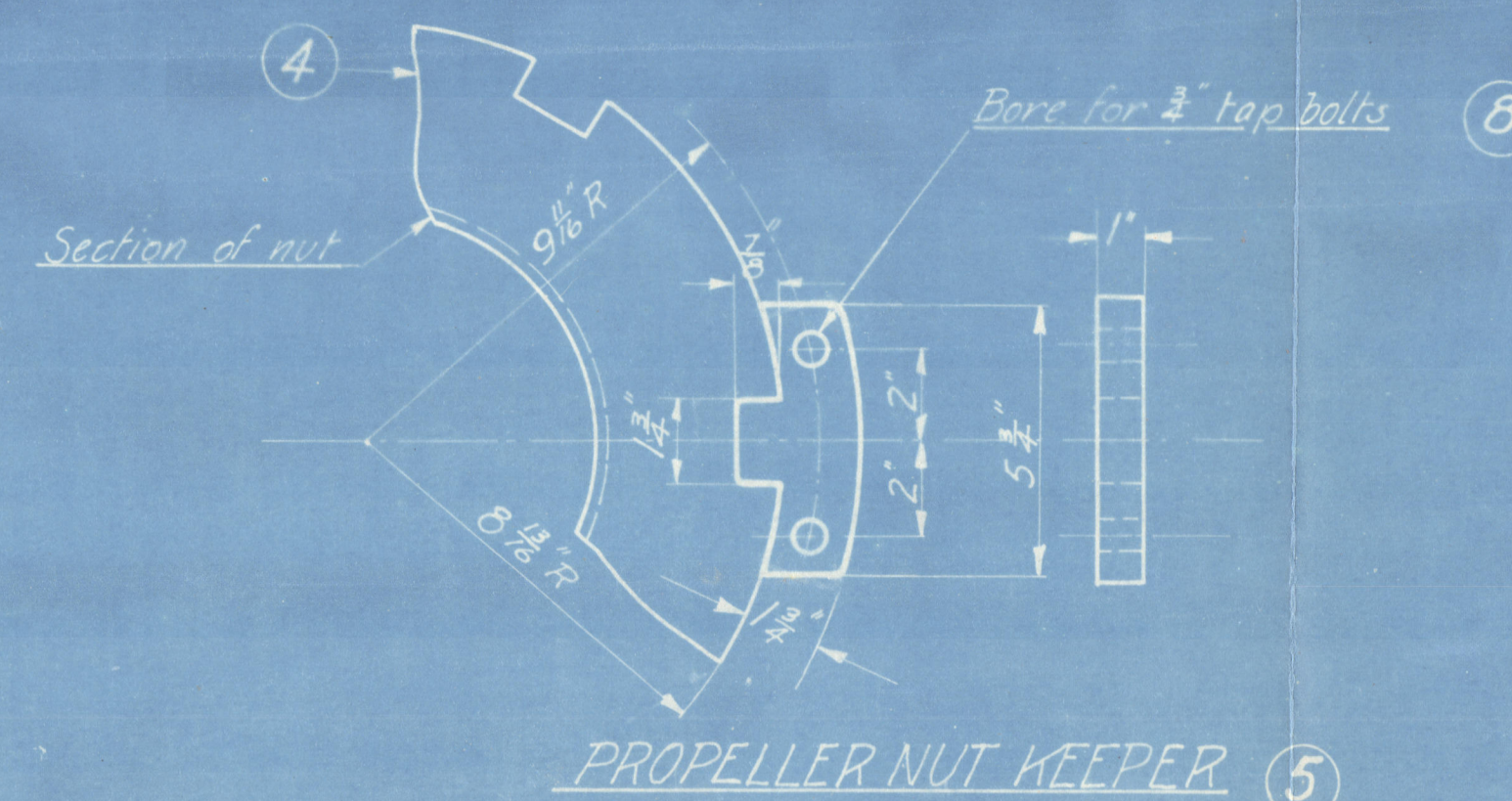


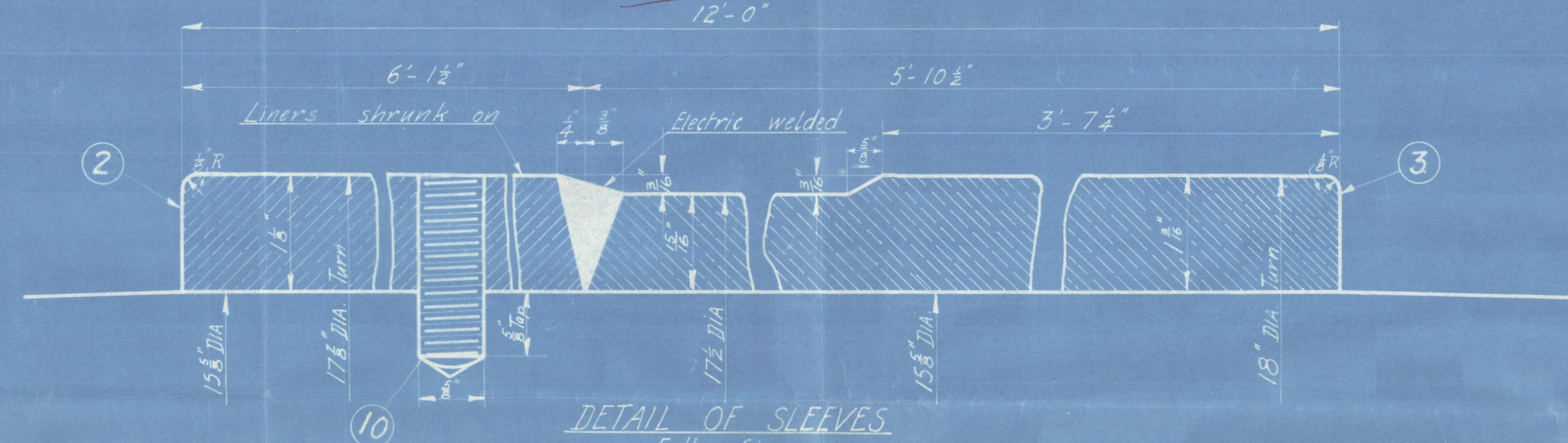
BILL OF MATERIAL				
FOR Tail Shaft				
NUMBER	DESCRIPTION	MATERIAL	MARK	REMARKS
1	Tail Shaft	Steel	1	
1	Out. d. Sleeve	Compo's	2	
1	Ind. d. Sleeve	"	3	
1	Propeller Nut	W. I.	4	
1	Propeller Nut Keeper	"	5	
1	Propeller Key	Steel	6	
2	Machine Screws	"	7	1" x 2 1/2"
2	Tap Bolts	Bronze	8	
6	3/8" x 10 1/2" Bolts	Steel	9	W.I. nuts
8	5/8" Stop screws	Bronze	10	



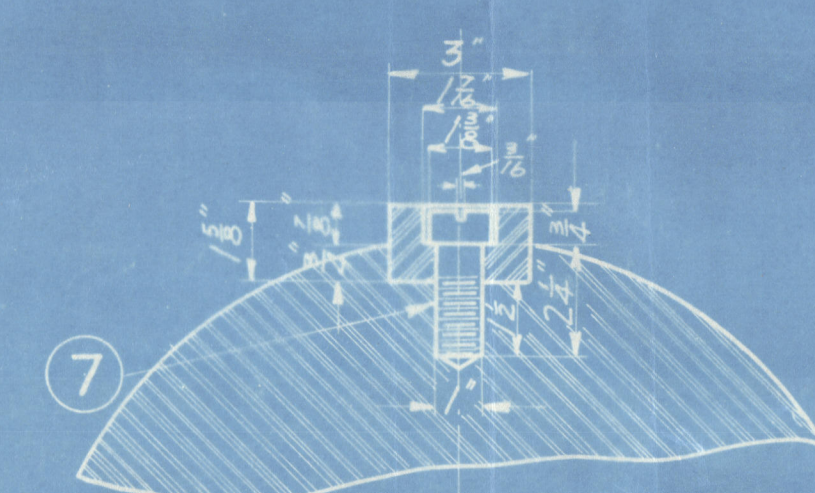
PROPELLER NUT



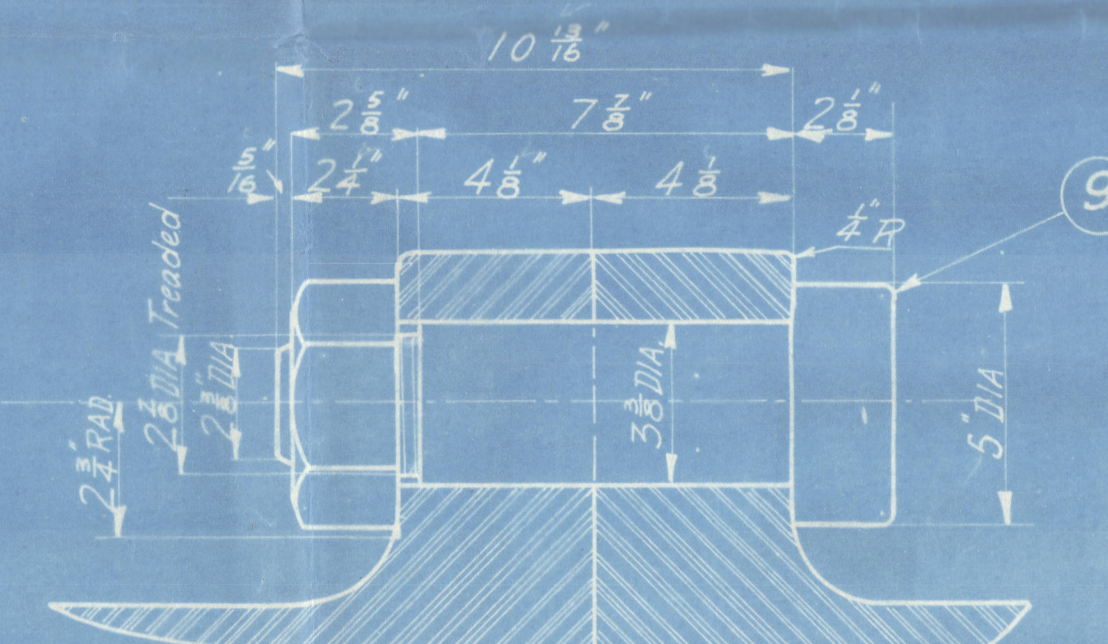
PROPELLER NUT KEEPER



DETAIL OF SLEEVES

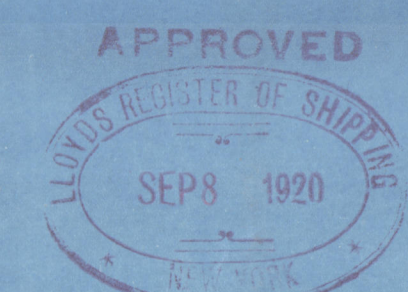


DETAIL OF KEY



COUPLING BOLTS

Crank shaft — 14'-06"
Thrust (below collar) — 14'-06"
Thrust (above collar) — 13'-44"
(C. H. Hendershott)
Crank shaft (C-1) — 14'-82"
With Coupling



Engine 27" x 48" x 74" 180 H.P.

CONTRACT NO.	DATE	FIFTEEN	REMARKS
TAIL SHAFT & SHAFTING ARR'GT			
ENGINE DEPT			
UNION CONSTRUCTION CO.			
ENGINEERS AND SHIPBUILDERS			
OAKLAND, CALIFORNIA			
DESIGNED BY	J. S. Hendershott	DATE	SEP 23 1920
TRACED BY	Dahl	DATE	SEP 23 1920
ENGINEER	W. J. Hendershott	DATE	SEP 23 1920
APPROVED BY	W. J. Hendershott	DATE	SEP 23 1920

W545-6118 Foundation

Tail Sheaf for the
Union Const. Co's Hulls

No. 15, ss Acards, S. & Rpt. 3552

No. 21, "Achatina." " " 3569

" 22, "Ampullaria." " " 3594

" 23, "Amalthus" " " 3629

RETAIN

WS 43-0118



© 2020

Lloyd's Register
Foundation