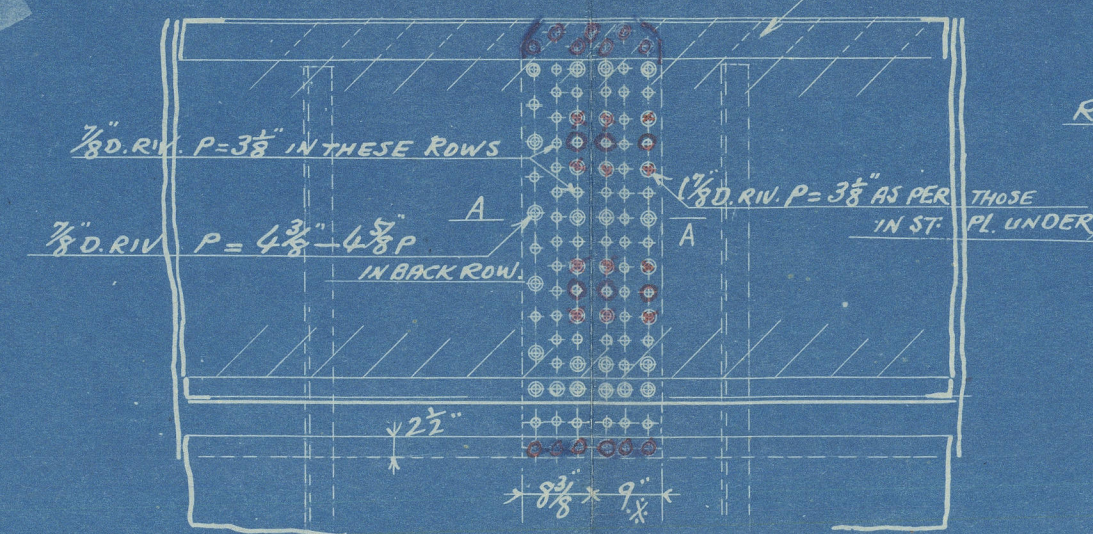


BUTTS OF STRINGER PL UNDER DOUBLING PL  
5" x 5" x .60" ANG.

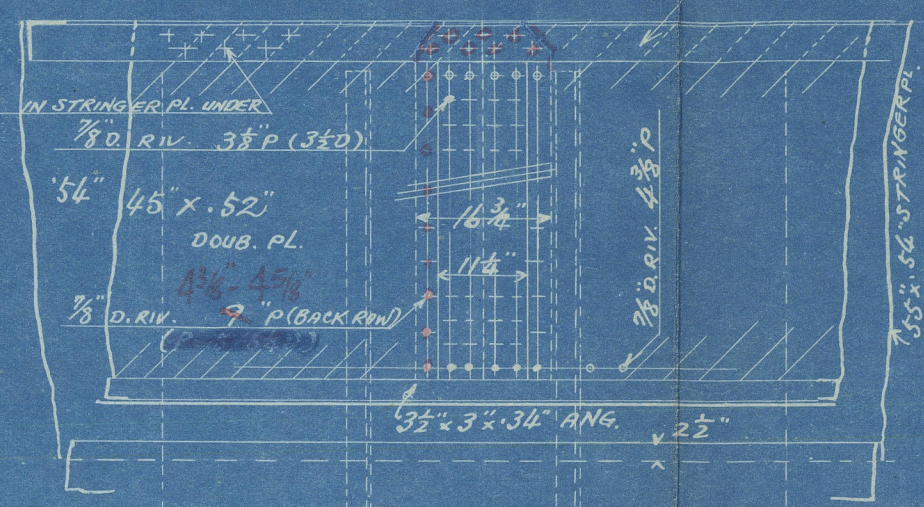


RIV. MARKED THUS SHOWS THOSE THROUGH TWO THICKNESS. ARRANGEMENT OF THESE RIVETS ARE AS PER THESE IN STRINGER PL UNDER DOUBLING PL UNDER

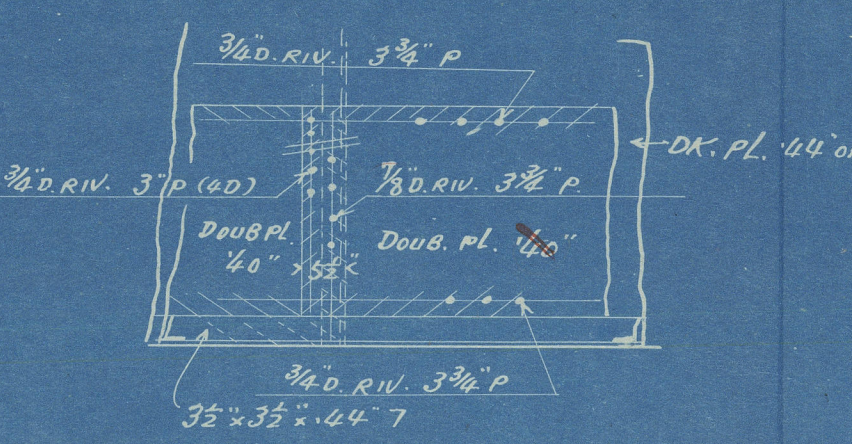
ANGLES

MARK	T	S	L	P	R
S21	MS 1	.60	5'-5"	38'-0"	2
S22	" 2	"	"	30'-6"	3
S23	" 1	"	"	12'-6"	1

BUTTS OF DOUBL PL  
5" x 5" x .60" ANG.



BUTTS OF DOUB PL at hatch Sides

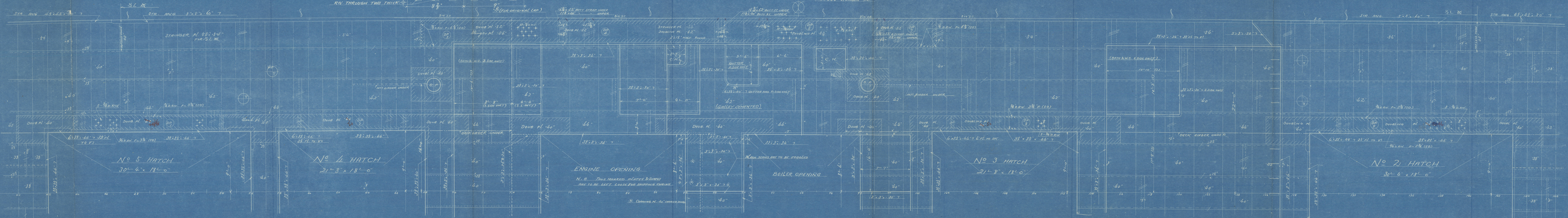


PLATES

MARKS	T	B	L	P	REMARKS
481 SW 8	40	63	17'-0"	2	DP 2.8. cut 2
609 SW 1	"	"	20'-0"	6	DP 4.3. cut 2
608 SW 4	"	"	24'-0"	1	cut 2
609 SW 30	40	54	28'-0"	2	cut 2 DP 1.9
512 PA 67	50	46	24'-6"	1	DP 4
608 SW 61	"	"	24'-6"	1	"
609 W 2	"	"	24'-0"	4	" 3.5
" 552	"	"	62	18'-9"	1 cut 2 DP 7
40 x 68	"	"	"	"	BUTT STRAPS FROM SCRAPS

# Nos 480-2 ALTERATION OF AWNING DECK SCALE 1/2" = 1'-0", 1/4" = 1'-0"

H6.10



ADDITIONAL STRENGTHENING IN WAY OF MACHINERY SPACE & AT SIDES OF HATCHWAYS FOR 1/2 L AMIDSHIPS. (BOTH SIDES SIMILAR)  
CONSTRUCTION OF AWNING DK IS TO BE AS PER PL. NO 31 EXCEPT WHERE OTHERWISE MENTIONED

Copy  
APPROVED  
JUL 25 1922  
Kobe Japan  
JUL 21 1922  
Kobe Japan  
© 2020  
Lloyd's Register  
Foundation  
WELDON



London

W542-0210



© 2020

Lloyd's Register  
Foundation