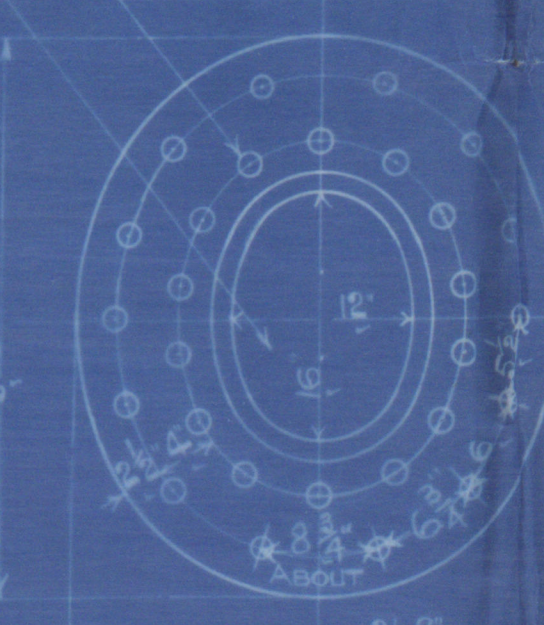


OUTER BUTT STRAPS 1/2" THICK
INNER 1/4" THICK
SHELL PLATE 1/2" THICK
RIVET HOLES 1/2" DIA.

16' DIA. CIRCUMFERENTIAL
RIVET HOLES 1/2" DIA.



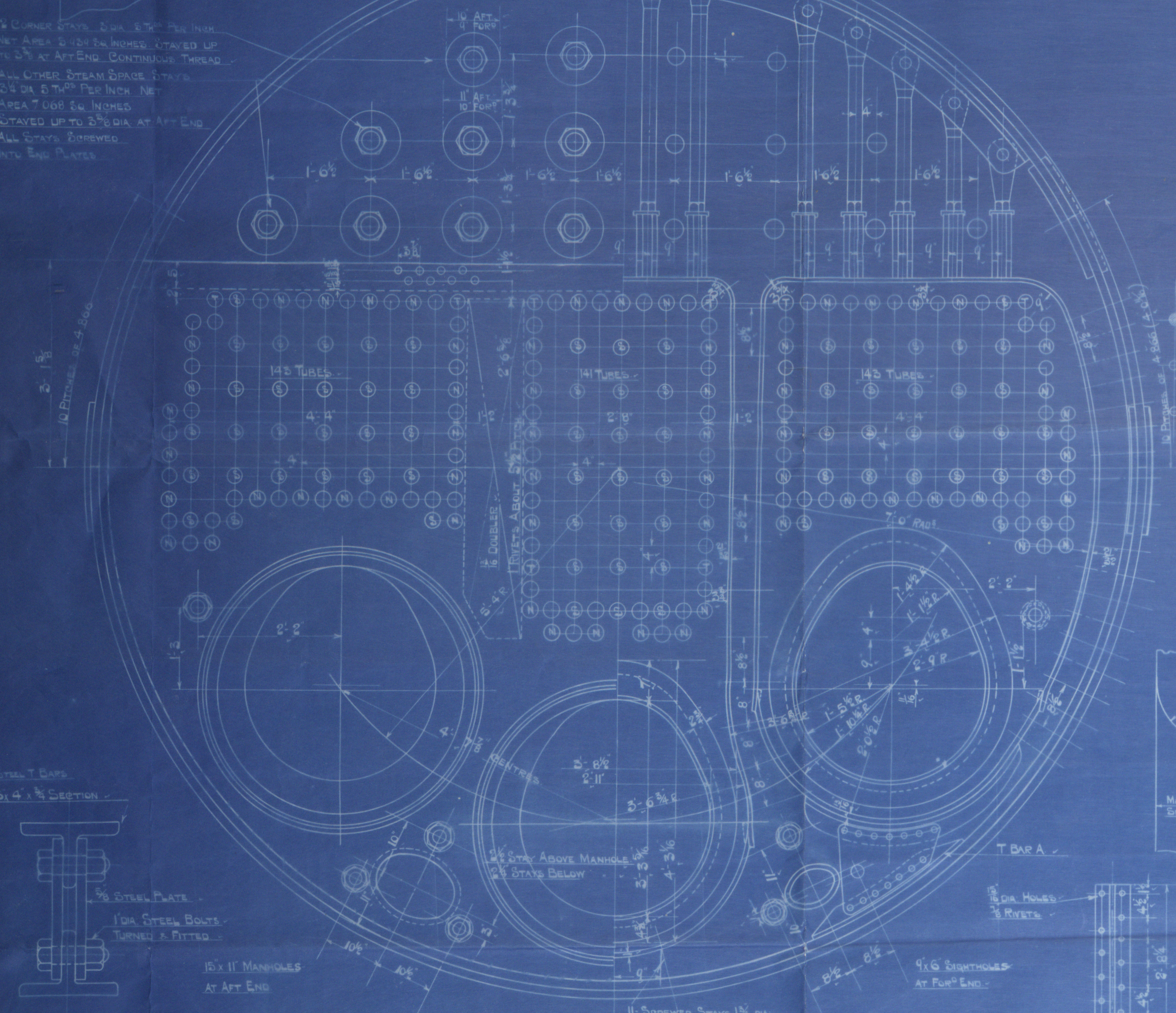
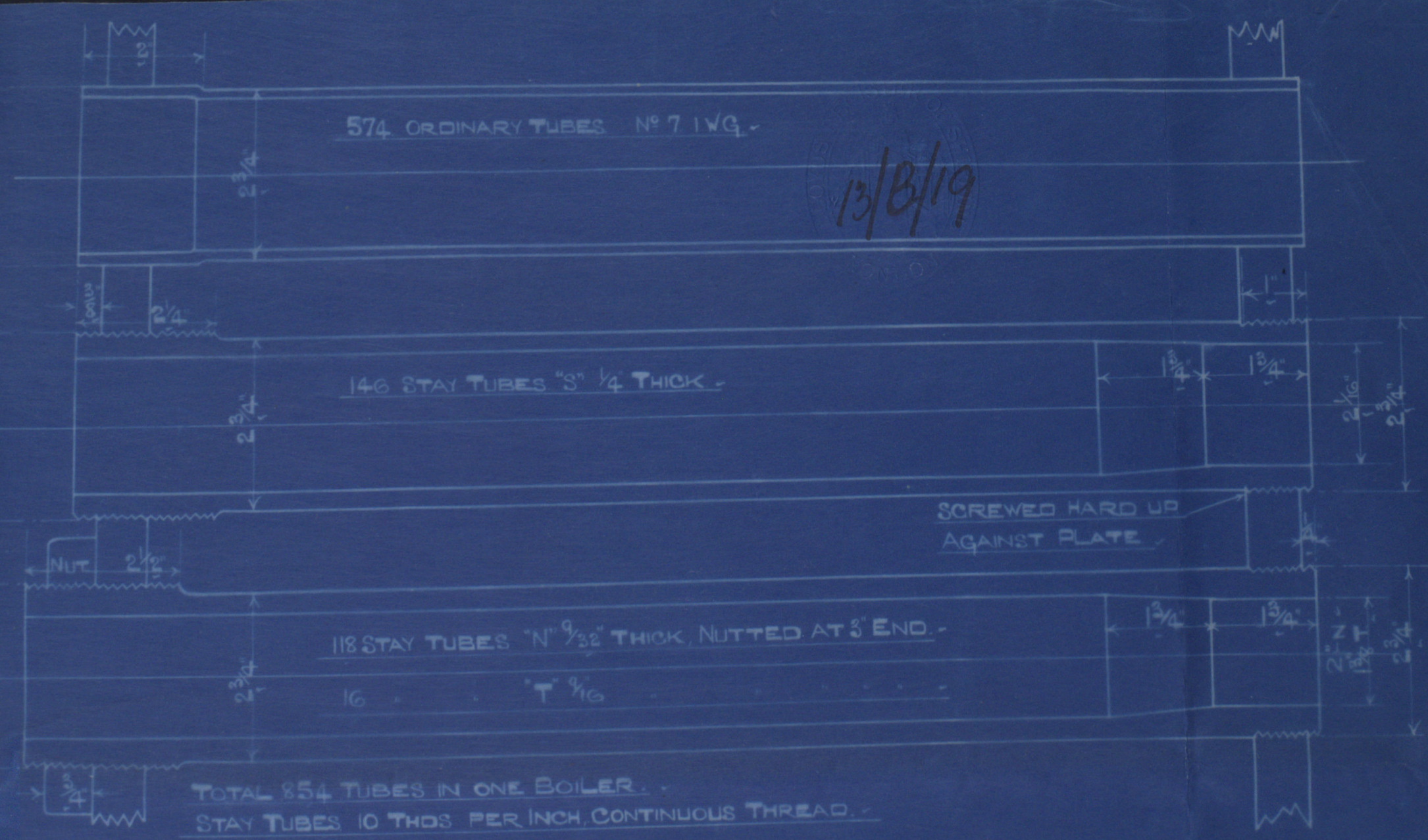
CHECKED BACK 1/2" THICK
SQUARE CORNER

RIVET HOLES 1/2" DIA.

INNER RING 1/2" THICK
SUPPLIED BY MINEIL

ABOUT 50 RIVETS
IN EACH BAR

HEATING SURFACE ETC.	1 BOILER	4 BOILERS
TUBES	4387 #	
FURNACES	300	
COMB CHAMBERS	323	
FRONT TUBE PLATES	60	
TOTAL	5430 #	21720 #
GRATE AREA (5' 9" BAR)	120 1/2 #	517 #
STEAMSPACE	820 #	



STEEL T. CASE

61 1/4 x 1/2 SECTION

1/2" STEEL PLATE

1/2" DIA. STEEL BOLTS

10 x 12 MANHOLES

AT AFT END

11' SCREWED STAYS 1 1/2" DIA.

9 x 6 SIGHTHOLES

AT FWD END

1/2" DIA. HOLES

3 RIVETS

THIS END SCREWED

INTO PLATES

11TH PER INCH

MANHOLE 5 1/2" DIA.

SIGHTHOLE 5 1/2"

SHADED STAYS 1 1/2" DIA.

ARRANGEMENT OF STAYS THIRD SHELL

AFT

15' 0" MEAN DIA.

1/2" DIA. BOLTS

4' 0" 4' 7 1/2" 4' 9" 4' 11 1/2"

4' 13 1/2" 4' 16 1/2" 4' 19 1/2" 4' 22 1/2"

4' 25 1/2" 4' 28 1/2" 4' 31 1/2" 4' 34 1/2"

4' 37 1/2" 4' 40 1/2" 4' 43 1/2" 4' 46 1/2"

4' 49 1/2" 4' 52 1/2" 4' 55 1/2" 4' 58 1/2"

4' 61 1/2" 4' 64 1/2" 4' 67 1/2" 4' 70 1/2"

4' 72 1/2" 4' 75 1/2" 4' 78 1/2" 4' 81 1/2"

4' 83 1/2" 4' 86 1/2" 4' 89 1/2" 4' 92 1/2"

4' 94 1/2" 4' 97 1/2" 4' 100 1/2" 4' 103 1/2"

4' 105 1/2" 4' 108 1/2" 4' 111 1/2" 4' 114 1/2"

4' 116 1/2" 4' 119 1/2" 4' 122 1/2" 4' 125 1/2"

4' 127 1/2" 4' 130 1/2" 4' 133 1/2" 4' 136 1/2"

4' 138 1/2" 4' 141 1/2" 4' 144 1/2" 4' 147 1/2"

4' 149 1/2" 4' 152 1/2" 4' 155 1/2" 4' 158 1/2"

4' 160 1/2" 4' 163 1/2" 4' 166 1/2" 4' 169 1/2"

4' 171 1/2" 4' 174 1/2" 4' 177 1/2" 4' 180 1/2"

4' 182 1/2" 4' 185 1/2" 4' 188 1/2" 4' 191 1/2"

4' 193 1/2" 4' 196 1/2" 4' 199 1/2" 4' 202 1/2"

4' 204 1/2" 4' 207 1/2" 4' 210 1/2" 4' 213 1/2"

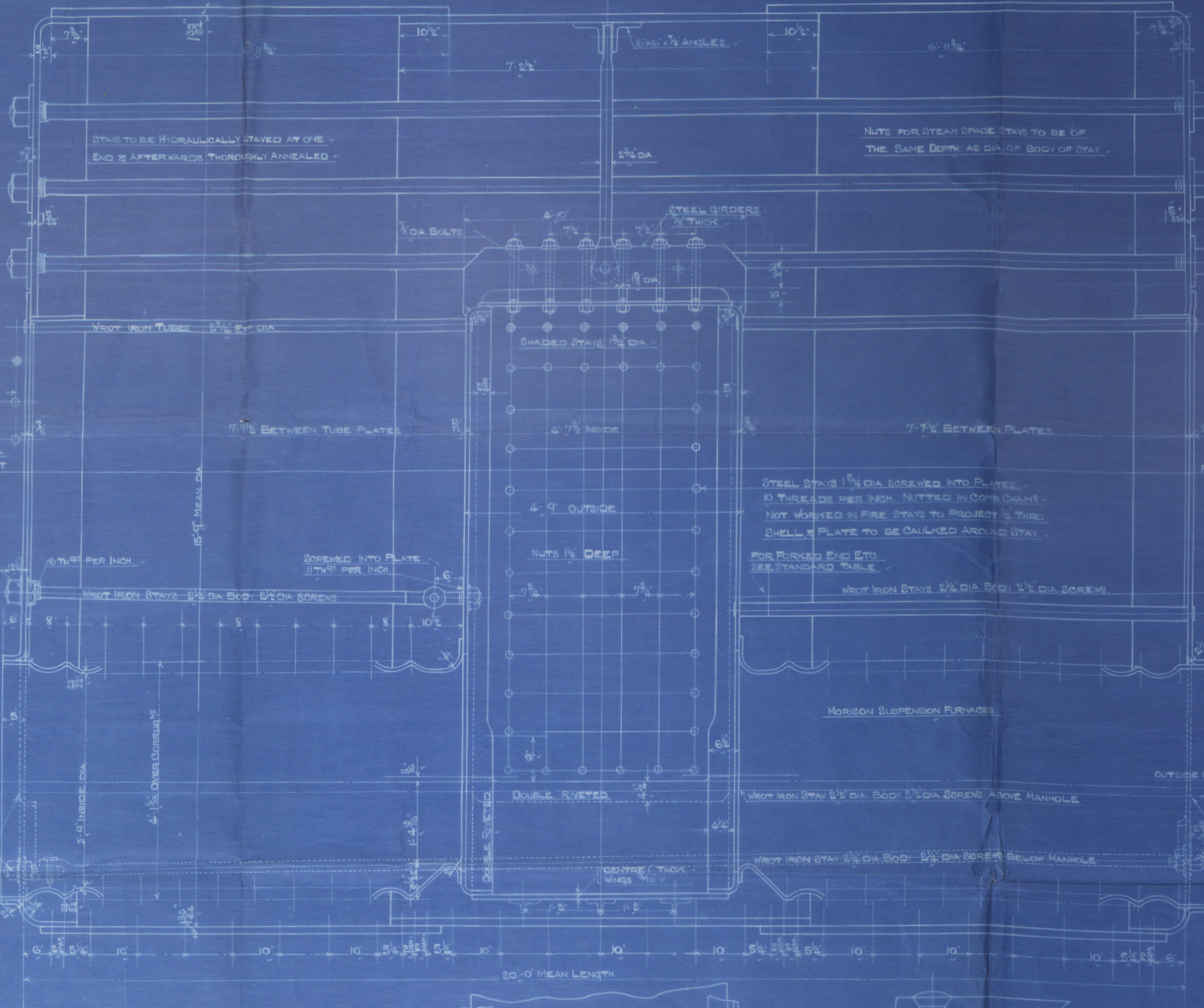
4' 215 1/2" 4' 218 1/2" 4' 221 1/2" 4' 224 1/2"

4' 226 1/2" 4' 229 1/2" 4' 232 1/2" 4' 235 1/2"

4' 237 1/2" 4' 240 1/2" 4' 243 1/2" 4' 246 1/2"

4' 248 1/2" 4' 251 1/2" 4' 254 1/2" 4' 257 1/2"

4' 259 1/2" 4' 262 1/2" 4' 265 1/2" 4' 268 1/2"



WORKING PRESSURE 215 LBS PER SQ. INCH

TEST 430 " " "

10' 0" MEAN LENGTH

1' 0" 1' 6" 1' 0" 1' 0"

1' 0" 1' 6" 1' 0" 1' 0"

1' 0" 1' 6" 1' 0" 1' 0"

1' 0" 1' 6" 1' 0" 1' 0"

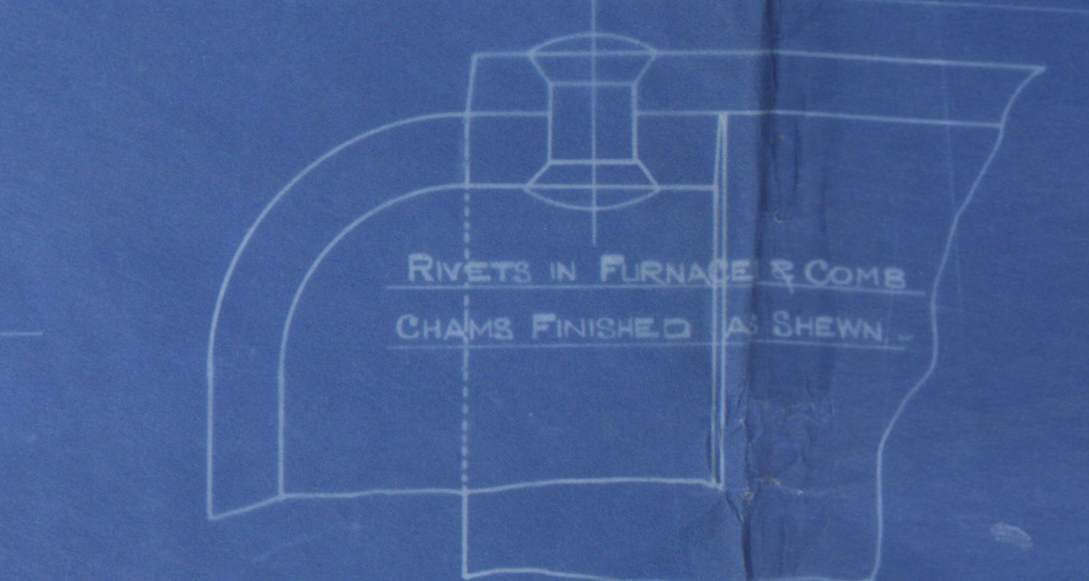
1' 0" 1' 6" 1' 0" 1' 0"

CENTRE COMB CHAMBER TO HAVE SCREWED STAYS 1 1/2" DIA.

SCREWED INTO PLATES, NUTTED IN COMB CHAMBERS, AND

RIVETED OVER SHELL, 10 THREADS PER INCH.

WING COMB CHAMBERS TO HAVE T BARS & GUSSETS.



RIVETS IN FURNACE & COMB

CHAMBERS FINISHED AS SHOWN

11TH PER INCH

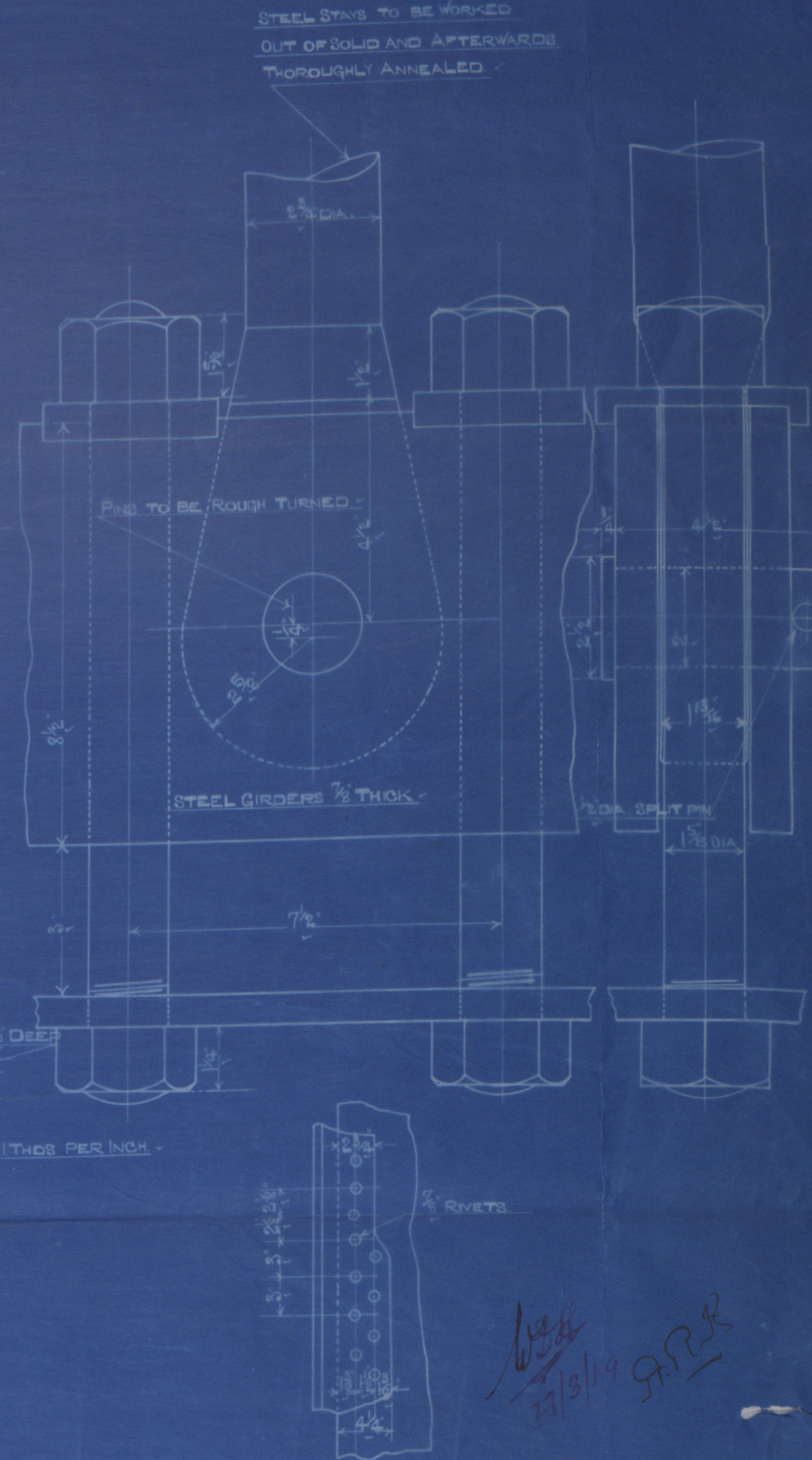
OUTSIDE NUT & DEEP

WROTE IRON STAY 1/2" DIA. BODY 1/2" DIA. SCREWS ABOVE MANHOLE

WROTE IRON STAY 1/2" DIA. BODY 1/2" DIA. SCREWS BELOW MANHOLE

11TH PER INCH

11TH PER INCH



STEEL STAYS TO BE WORKED

OUT OF SOLID AND AFTERWARDS

THOROUGHLY ANNEALED

11TH PER INCH

11TH PER INCH

11TH PER INCH

11TH PER INCH

11TH PER INCH

11TH PER INCH

11TH PER INCH

11TH PER INCH

11TH PER INCH

11TH PER INCH

11TH PER INCH

11TH PER INCH

11TH PER INCH

11TH PER INCH

11TH PER INCH

11TH PER INCH

11TH PER INCH

11TH PER INCH

11TH PER INCH

11TH PER INCH

11TH PER INCH

11TH PER INCH

11TH PER INCH

11TH PER INCH

11TH PER INCH

11TH PER INCH

11TH PER INCH

11TH PER INCH

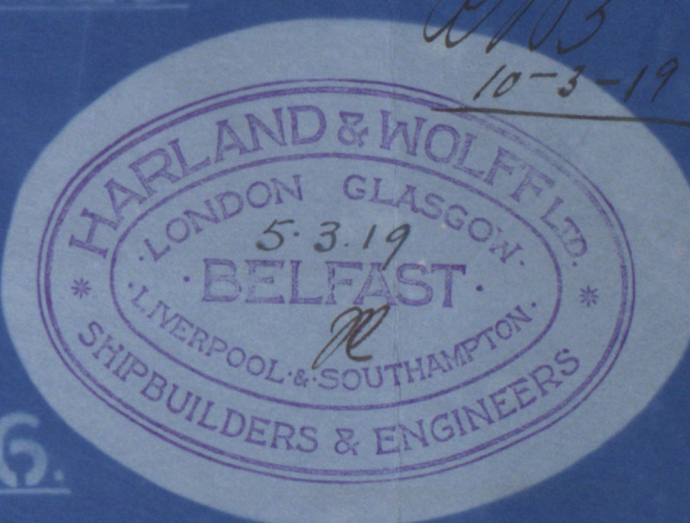
11TH PER INCH

11TH PER INCH

D. E. MAIN BOILER N° 506

UNDER SURVEY OF BOARD OF TRADE

4-OFF



100 Main Street

Belpset

Houland & Wolff
T.S.S. 506

Amended plan
Bailers

"
S. Croya

Bd 8892

RETAIN

W540 0184



© 2019

Lloyd's Register
Foundation