

MIDSHIP SECTION

DIMENSIONS 270'-0" x 38'-0" MLD x 20'-0" MLD
TO CLASS AT LLOYDS "100A.I." STEEL PARTIAL ANWHING DECK.

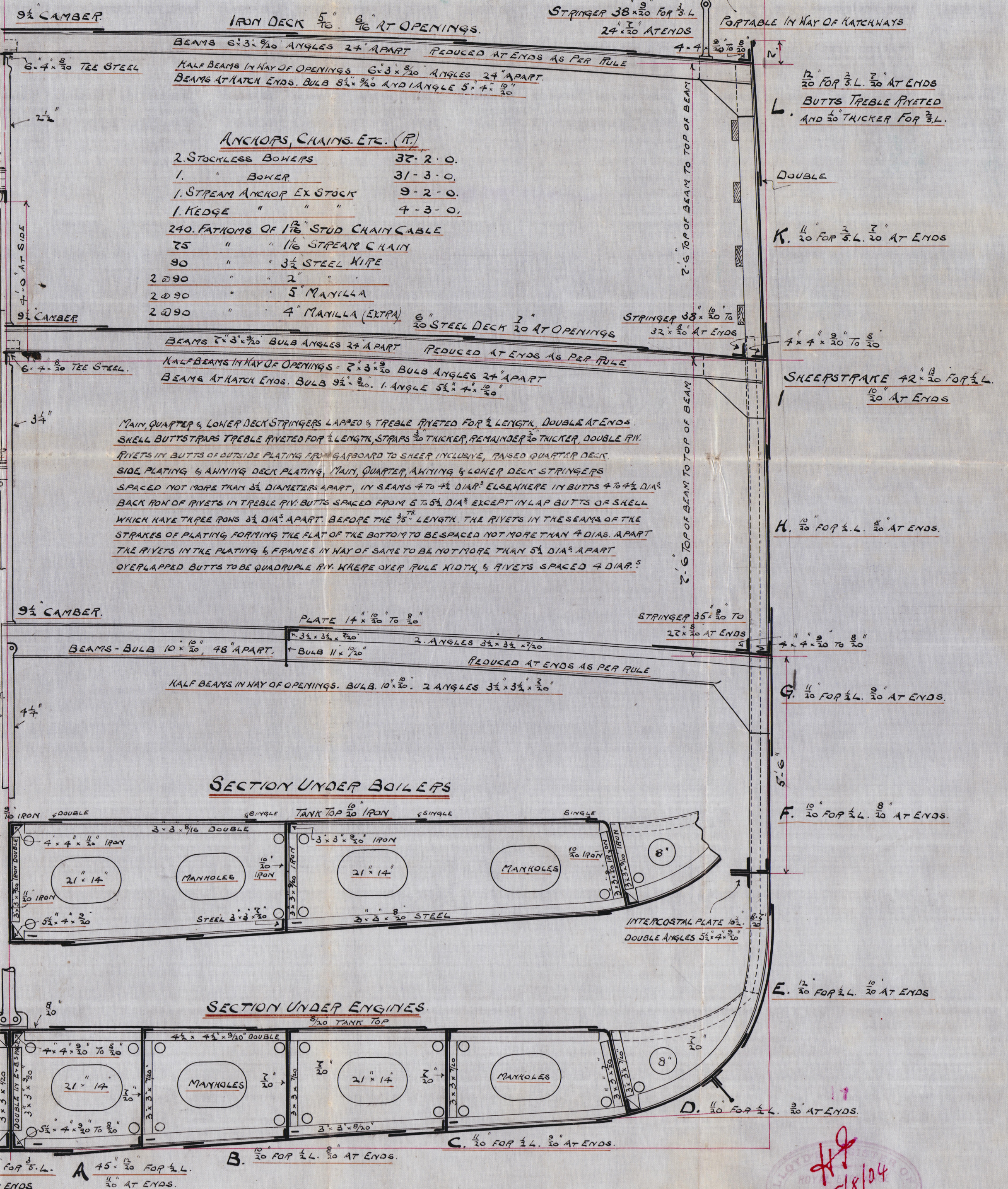
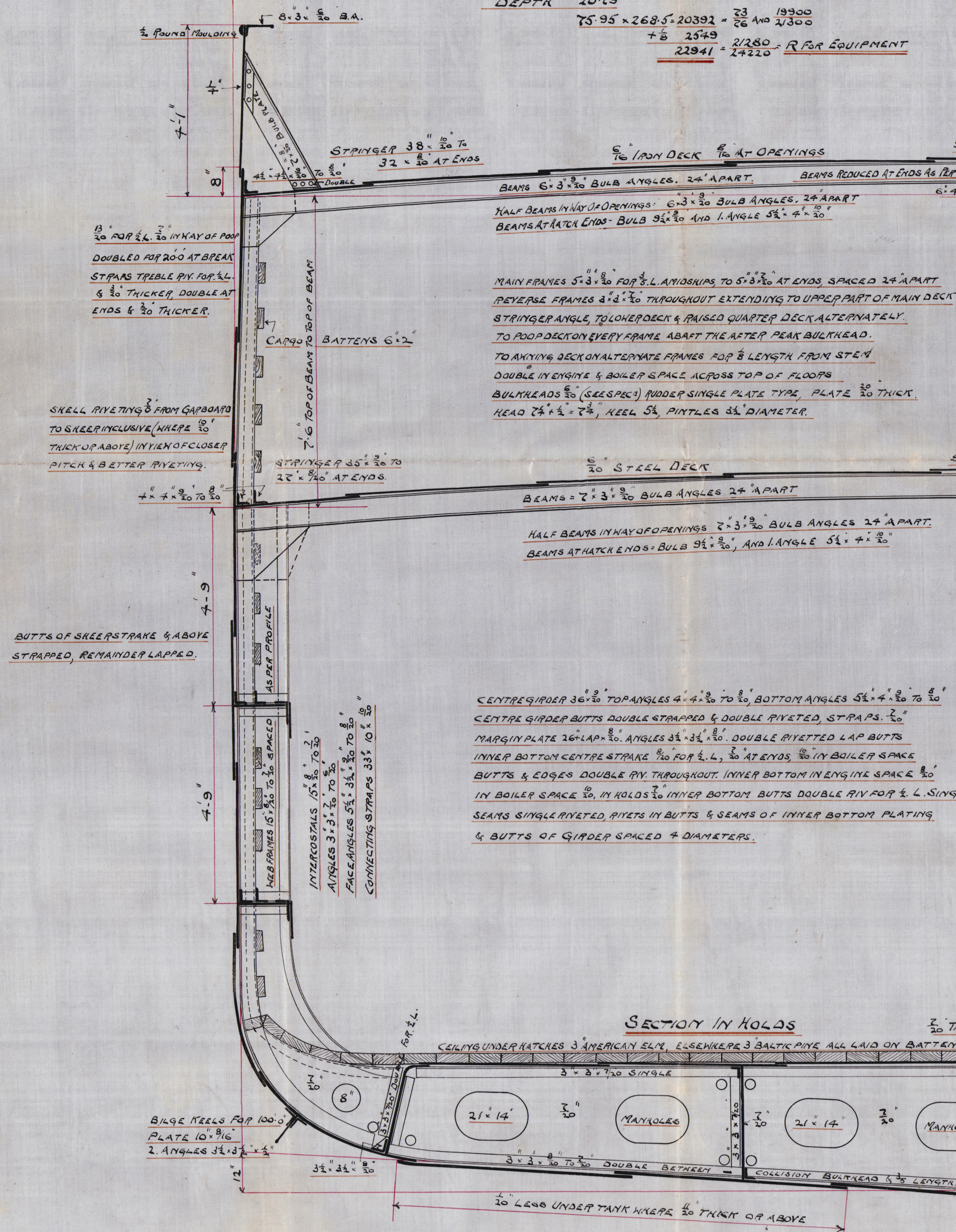
SCALE 1" = ONE FOOT.



POOP BEAMS 7'-3" x 3/4" BULB ANGLES
" STRINGER 24" x 3/4" ANGLES 3 1/2" x 3/4"
" SIDE PLATING 3/4"
" DECK 3/4" PITCH PINE.

NUMERALS

1/2 GIRTH 36-16
1/2 BREADTH 19-0
DEPTH 20-79
75.95 x 268.5 = 20392 = 23 19900
+ 5 2549
22941 = 2/280 = R FOR EQUIPMENT
24220



Popper & Sons
407 "Stork"

Midship Section
(as built)

Mat. Report No 3947

Visit vessel to
H. Crane Inst 3904

RETAIN



© 2020

Lloyd's Register
Foundation

W539-0303