

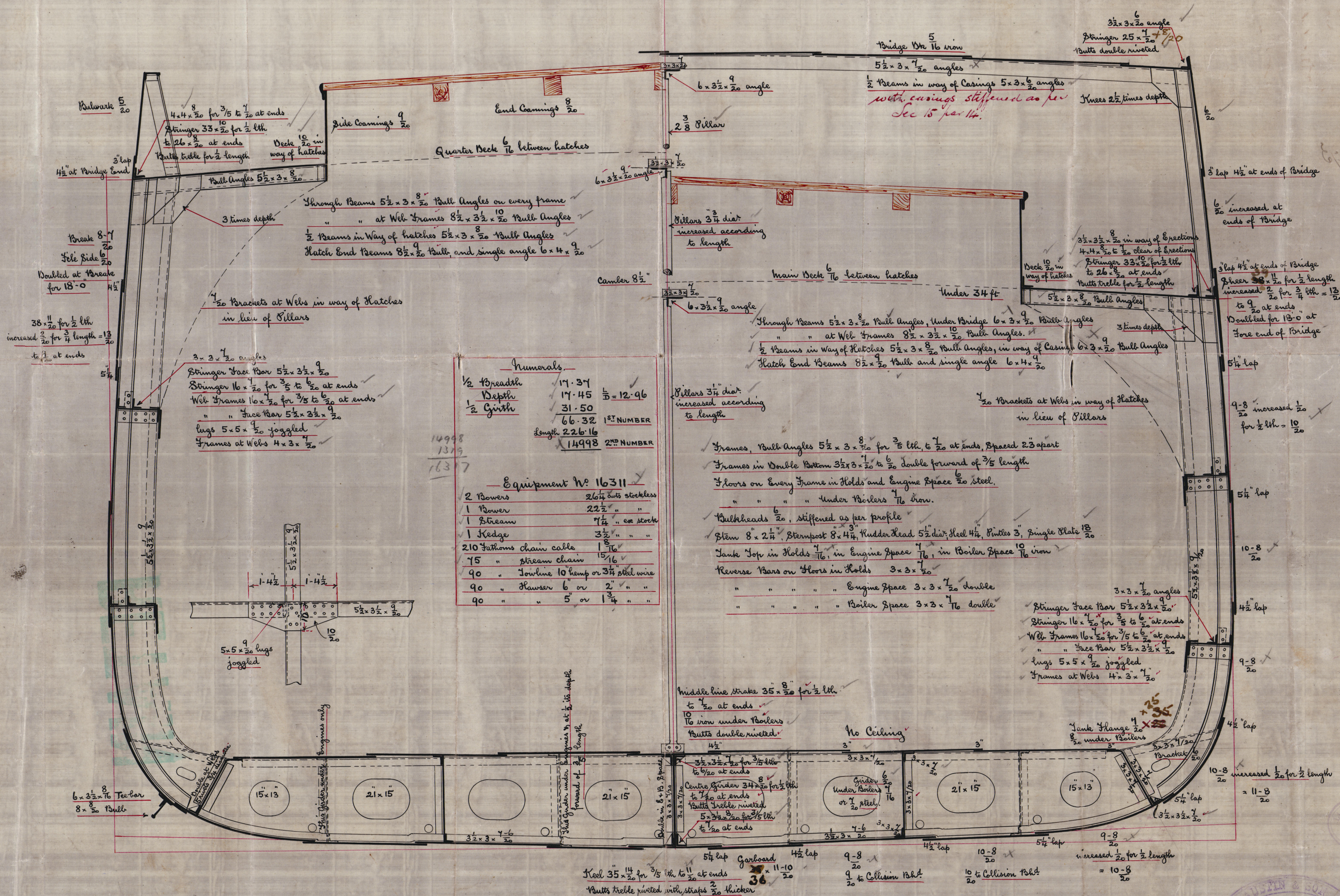
6. 2. 03

Midship Section No. 223.

Length B.P. 228'-0"

Breadth Mld^d 34'-9"Depth Mld^d to main Wk 16'-9"

Scale 1/2" = 1 Foot.



Butts of Shell lapped and treble riveted for 1/2 length, double at ends
Where outside strakes exceed 46, and inside strakes exceed 54, Butts quadruple for 1/2 length treble at ends
All parts of Double Bottom increased 1/16 in Boiler Space.

2/2/03
STEEL & IRON SHIPBUILDERS
AND
REPAIRERS
J.S.S.

© 2021

Lloyd's Register
W53870311pn

No. 223
SS St. Agnes
Marine
Section

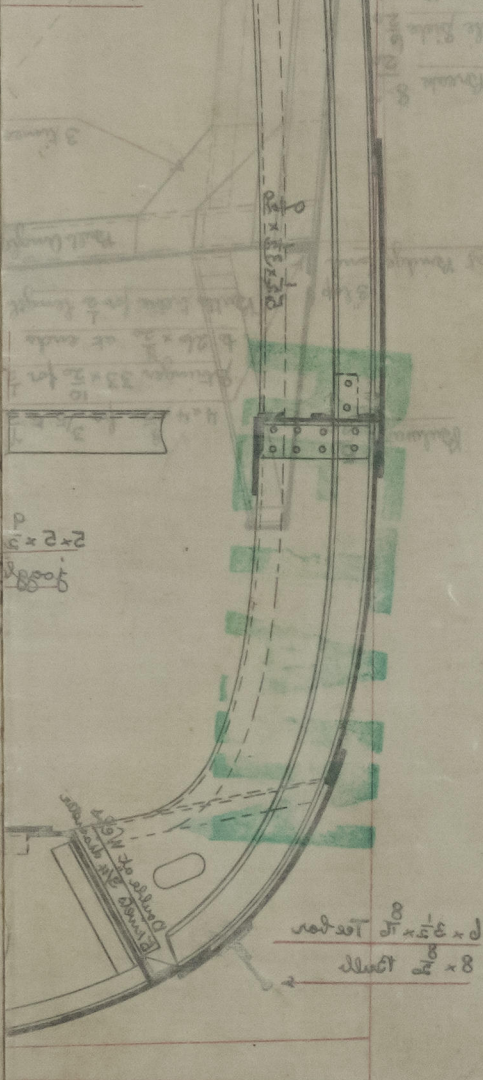
Sld for No 21456

6-2-03

Sunderland H.E. 214/3

W538-0311

1. 2×2
 2. 2×2
 3. 2×2
 4. 2×2
 5. 2×2
 6. 2×2
 7. 2×2
 8. 2×2
 9. 2×2
 10. 2×2
 11. 2×2
 12. 2×2
 13. 2×2
 14. 2×2
 15. 2×2
 16. 2×2
 17. 2×2
 18. 2×2
 19. 2×2
 20. 2×2
 21. 2×2
 22. 2×2
 23. 2×2
 24. 2×2
 25. 2×2
 26. 2×2
 27. 2×2
 28. 2×2
 29. 2×2
 30. 2×2
 31. 2×2
 32. 2×2
 33. 2×2
 34. 2×2
 35. 2×2
 36. 2×2
 37. 2×2
 38. 2×2
 39. 2×2
 40. 2×2
 41. 2×2
 42. 2×2
 43. 2×2
 44. 2×2
 45. 2×2
 46. 2×2
 47. 2×2
 48. 2×2
 49. 2×2
 50. 2×2
 51. 2×2
 52. 2×2
 53. 2×2
 54. 2×2
 55. 2×2
 56. 2×2
 57. 2×2
 58. 2×2
 59. 2×2
 60. 2×2
 61. 2×2
 62. 2×2
 63. 2×2
 64. 2×2
 65. 2×2
 66. 2×2
 67. 2×2
 68. 2×2
 69. 2×2
 70. 2×2
 71. 2×2
 72. 2×2
 73. 2×2
 74. 2×2
 75. 2×2
 76. 2×2
 77. 2×2
 78. 2×2
 79. 2×2
 80. 2×2
 81. 2×2
 82. 2×2
 83. 2×2
 84. 2×2
 85. 2×2
 86. 2×2
 87. 2×2
 88. 2×2
 89. 2×2
 90. 2×2
 91. 2×2
 92. 2×2
 93. 2×2
 94. 2×2
 95. 2×2
 96. 2×2
 97. 2×2
 98. 2×2
 99. 2×2
 100. 2×2



Our boats of Double Bottom
were outside, others were
in, about 2000 happened and
saw him and his people

W538-0311