

MIDSHIP-SECTION OF NO 21 SCALE 1/2"=1'

SECTION THROUGH BOILER SPACE

STRONG PLATE ON BRIDGE DECK 48" x 36"
DO. ON FORECASTLE DECK 27" x 32"
BUTT DOUBLE RIVETTED LAPPED
STRONGER ANGLE ON BRIDGE DECK 3" x 3" x 36"
DO. ON FORECASTLE DECK 3" x 3" x 32"
TIE PLATE ON BRIDGE DECK 12" x 36"

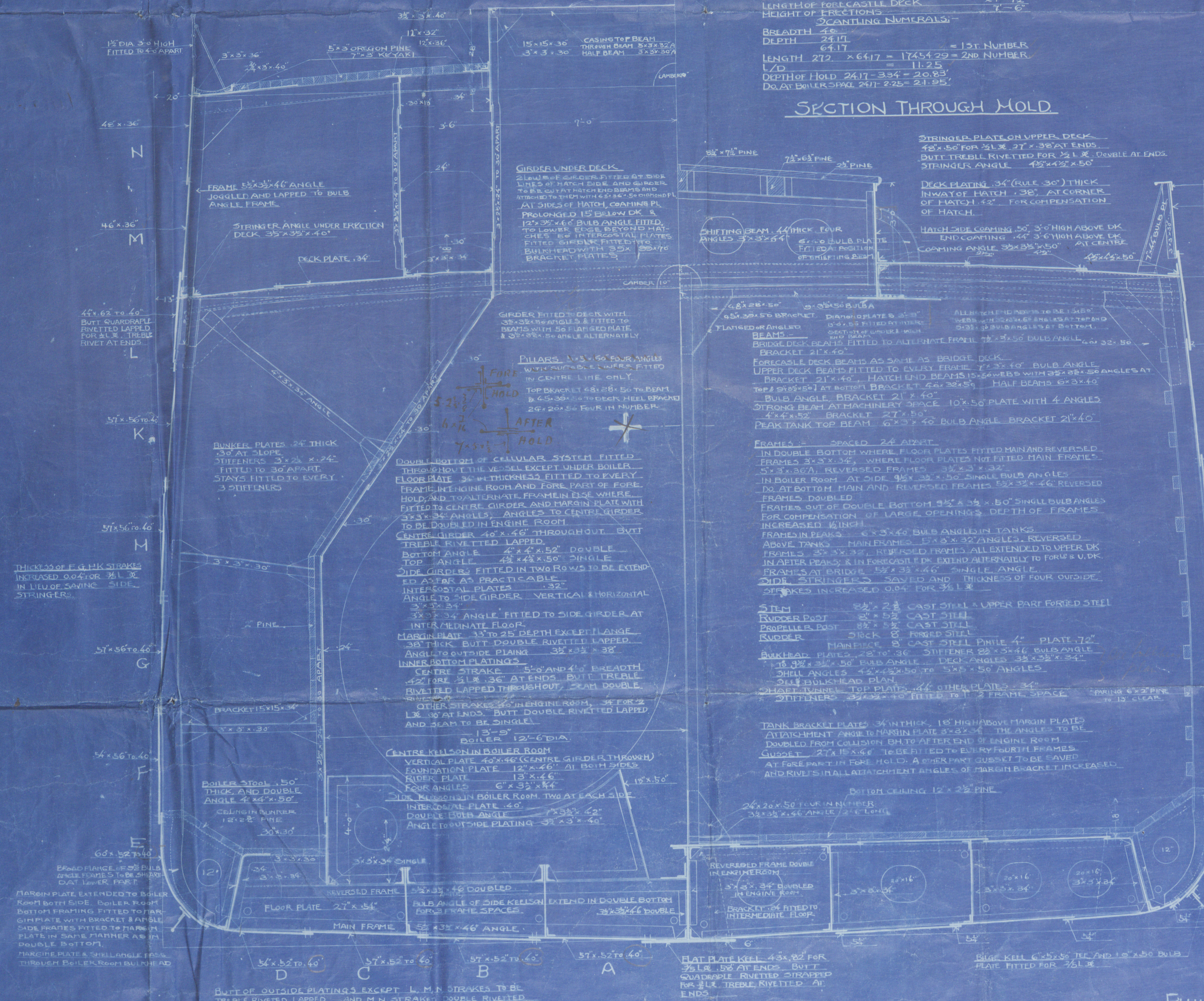
PRINCIPAL DIMENSIONS:-
LENGTH BETWEEN PERPENDICULARS 272'-0"
BREADTH MOORED 24'-2"
DEPTH MOORED 50'-0"
LENGTH OF BRIDGE DECK 24'-7 1/2"
LENGTH OF FORECASTLE DECK 7'-6"
HEIGHT OF ERECTIONS:-
BREADTH 48"
DEPTH 24 1/2" = 1ST NUMBER
LENGTH 272' x 64/17 = 1745.429 = 2ND NUMBER
L/D 11.25
DEPTH OF HOLD 24 1/2' - 33.4' = 20.85'
DO. AT BOILER SPACE 24 1/2' - 21.95'

SECTION THROUGH MOLD

STRONG PLATE UPPER DECK 48" x 36" FOR 21' x 27' x 36" AT ENDS
BUTT TREBLE RIVETTED FOR 21' x 27' x 36" AT ENDS
STRONGER ANGLE 48" x 36" x 50"

DECK PLATING 34" (RUE 30") THICK
INWAY OF HATCH 38" AT CORNER
OF HATCH 42" FOR COMPENSATION
OF HATCH
HATCH SIDE CORNER 50" x 3" HIGH ABOVE DECK
DO. CONTINUING 44" x 3" HIGH ABOVE DECK
CORNER ANGLE 38" x 38" x 50" AT CORNER
48" x 48" x 50" AT CORNER

72" x 44" BULB ANGLE
BULB ANGLE 30" THICK
30" AT END OF BRIDGE
30" HIGH ABOVE DECK
30" x 74" BULB PLATE
AND 30" x 30" ANGLE FITTED
TO 6" APART, AND 5" O.
APART AT ENDS OF BRIDGE



FUJINAGATA DOCK YARD, OSAKA.

Kobe Hb & Hb D Repts
No 1867
Sep. 1916

Kureshima Maru

Fujima faw No 21 $\frac{9}{5}$

Mid-ship Section

Hb. assigned by Kaigi Ryokai :

4' 4 $\frac{3}{8}$ "

FW. 4 $\frac{1}{2}$ IS. 3 $\frac{3}{8}$ W 3 $\frac{3}{8}$

WNA 5 $\frac{3}{8}$ DR line 1 $\frac{1}{2}$ stud dR

S.S. "Wagland"
Kobe' 1957.

RETAIN



© 2020

Lloyd's Register
Foundation

W536-041