

MIDSHIP-SECTION OF NO 21 SCALE 1/2"=1'

SECTION THROUGH BOILER SPACE

STRINGER PLATE ON BRIDGE DECK 48" x 36"
DO. ON FORECASTLE DECK 27" x 32"
BUTT DOUBLE RIVETTED LAPPED
STRINGER ANGLE ON BRIDGE DECK 3" x 3" x 36"
DO. ON FORECASTLE DECK 3" x 3" x 32"
TIE PLATE ON BRIDGE DECK 12" x 36"

PRINCIPAL DIMENSIONS:-
LENGTH BETWEEN PERPENDICULARS 272'-0"
BREADTH MOULDED 40'-0"
DEPTH MOULDED 24'-2"
LENGTH OF BRIDGE DECK 50'-0"
LENGTH OF FORECASTLE DECK 24'-7 1/2"
HEIGHT OF ERECTIONS 7'-6"
SCANTLING NUMERALS:-
BREADTH 40
DEPTH 24 1/2
LENGTH 272 x 6417 = 1745429 = 1ST NUMBER
L/D = 11.25
DEPTH OF HOLD 24 1/2 - 334 = 20.83'
DO. AT BOILER SPACE 24 1/2 - 225 = 21.95'

SECTION THROUGH MOLD

STRINGER PLATE ON UPPER DECK
48" x 50" FOR 251 & 27" x 36" AT ENDS
BUTT TREBLE RIVETTED FOR 251 & DOUBLE AT ENDS
STRINGER ANGLE 48" x 48" x 50"

DECK PLATING 3/4" (RULE 30") THICK
WAY OF HATCH 1/2" x 3/8" AT CORNER
OF HATCH 1/4" FOR COMPENSATION
OF HATCH

HATCH SIDE COAMING 50" 3'-0" HIGH ABOVE DECK
END COAMING 44" 3'-6" HIGH ABOVE DECK
COAMING ANGLE 3/8" x 3/8" x 50" AT CENTRE

7 1/2" x 44" BULB ANGLE
BULWARK PLATE 3/8" THICK
36" HIGH ABOVE DECK
STAYS 7 1/2" x 30" BULB PLATE
AND 3/8" x 30" ANGLE FITTED
TO 6'-0" APART, AND 5'-0"
APART AT ENDS OF BRIDGE

Doubled with 1/2" plate
for 20 ft at each end of bridge

In red ink
Pillars To be fitted in
centre line as plan
Fore hold 5' x 2 1/2' x 36"
four B.A. and
6' x 40" four bulb plates
After hold 5' x 7' x 40"
two tee bulbs & 6' x 40"
two bulb plates

DOUBLE
1/2" for 20 ft
at each end
of bridge

57' x 56" to 40"

57' x 56" to 40"

57' x 56" to 40"

57' x 56" to 40"

57' x 56" to 40"

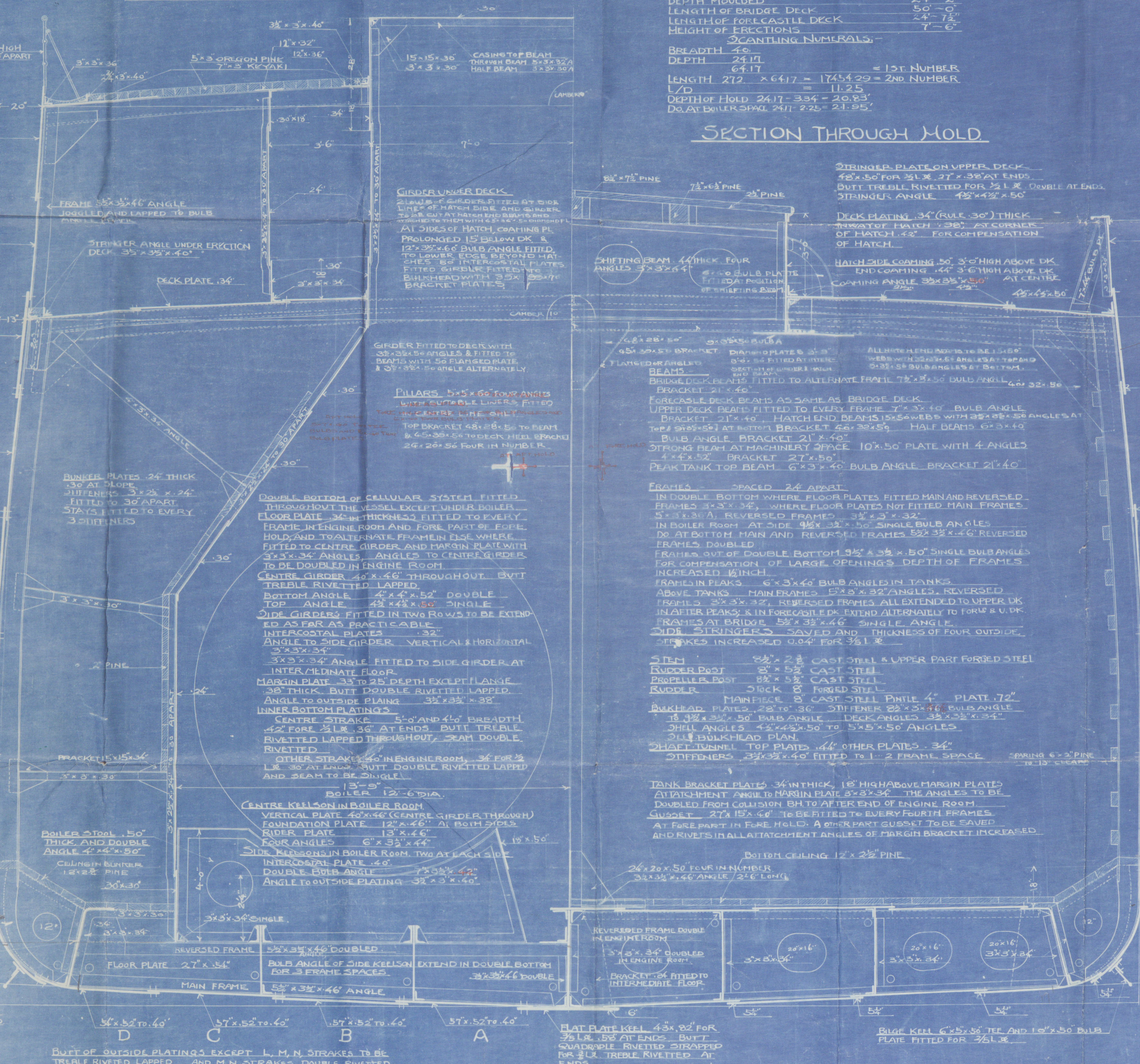
57' x 56" to 40"

57' x 56" to 40"

57' x 56" to 40"

57' x 56" to 40"

57' x 56" to 40"



ADDITIONAL STRENGTHENING TO FORE PART
RIVETS IN PLATING AND FRAMES IN WAY OF
FLAT BOTTOM SPACED 5 1/2" DIA APART
FROM FRNO 107 TO COLLISION BULKHEAD
FLOOR PLATES FITTED TO EVERY FRAME
MAIN FRAMES DOUBLED BETWEEN MARGIN
THREE STRAKES OF OUTSIDE PLATE NEXT KEEL
TO BE THE SAME THICKNESS AS MIDSHIP
TO ROWS OF SIDE GIRDER TO BE EXTENDED
AS FAR AS PRACTICABLE

PANTING ARRANGEMENT:-
TWO ROWS OF PANTING STRINGER FITTED IN
FORE PEAK, PLATE 24" x 40" ANGLE 3/8" x 36" x 40"
24" x 40" COLLISION BULKHEAD BRACKET 1/2" x 3/8"
FITTED TO ALL PANTING BEAM
REVERSED FRAMES 7 1/2" x 30" BULB ANGLE TO
TRANS (1/2" x 3/8" 30" x 40" ONLY TO FR NO 113 & 114
TO BE FITTED IN LIEU OF PANTING
BEAM AFT COLLISION BULKHEAD

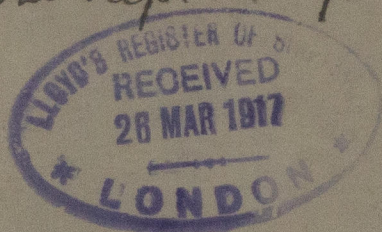
FUJINAGATA DOCK YARD, OSAKA.

Supergata No 21

*S/S ~~Herring~~ ~~Man~~
Wagland.*

Midship Section

Noke Rep. No 1957



RETAIL



© 2020

Lloyd's Register
Foundation

W536-0410