

= NORTHUMBERLAND ENGINE WORKS =

- TRACING 358 -

- SCHEDULE L -

- STEAM BOILER -

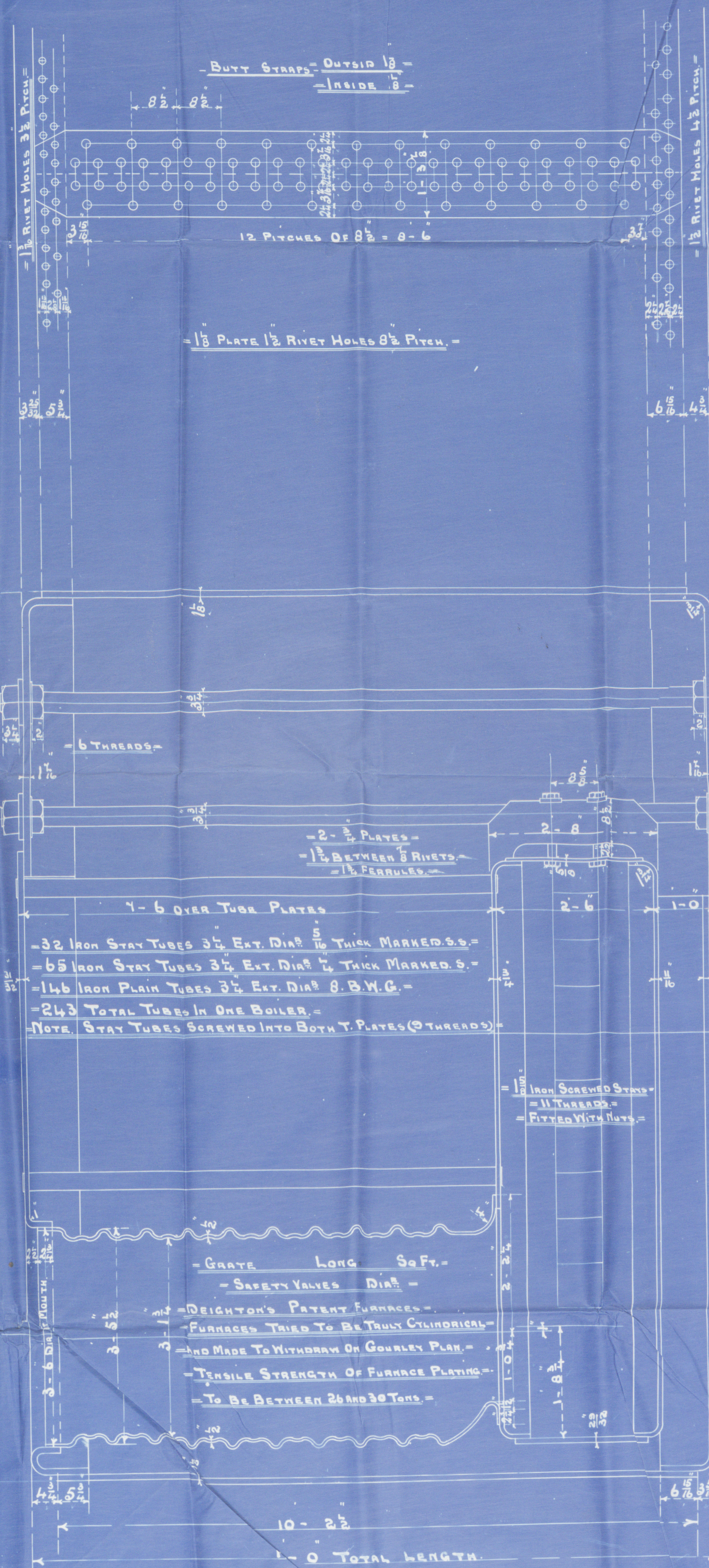
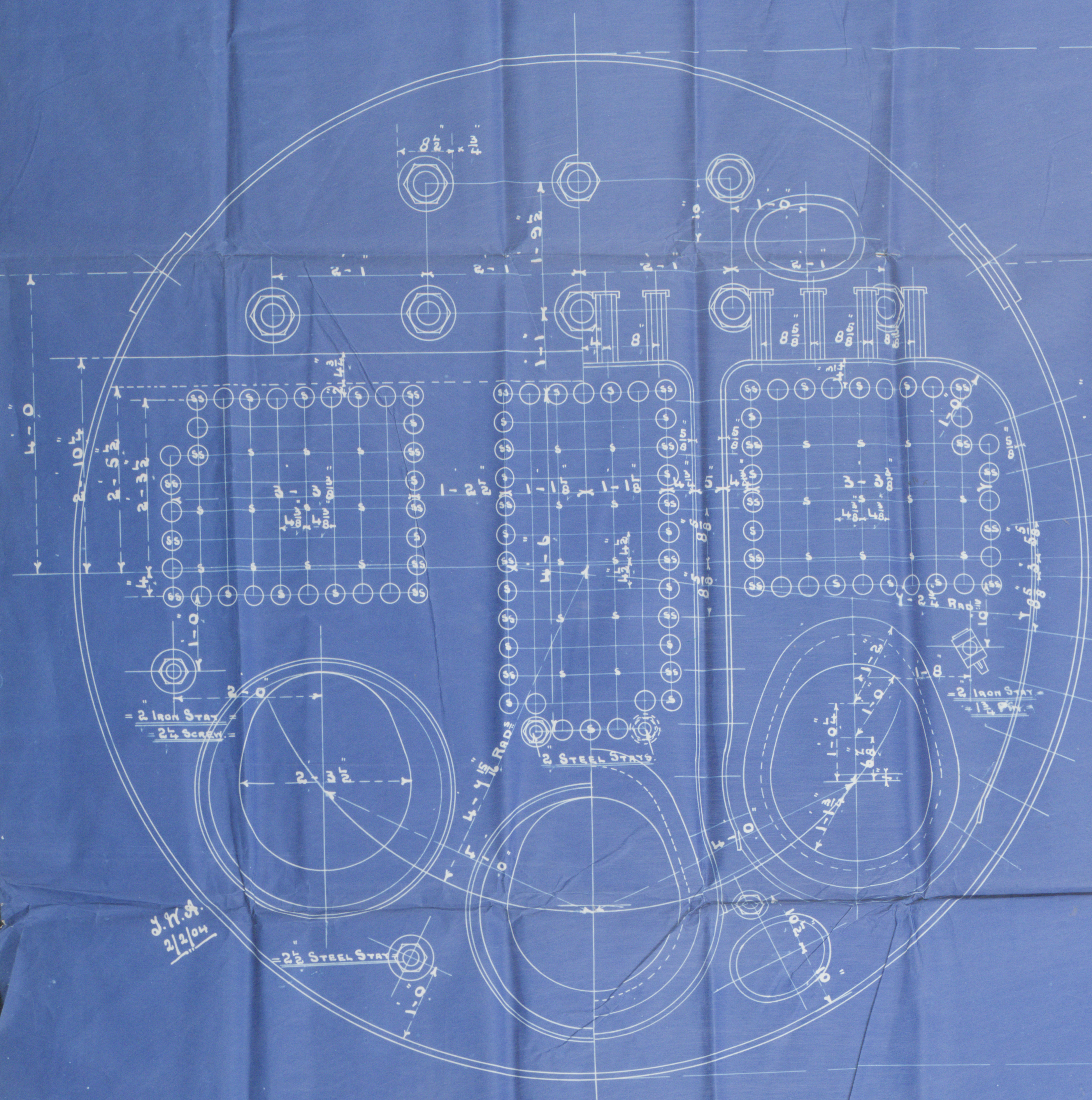
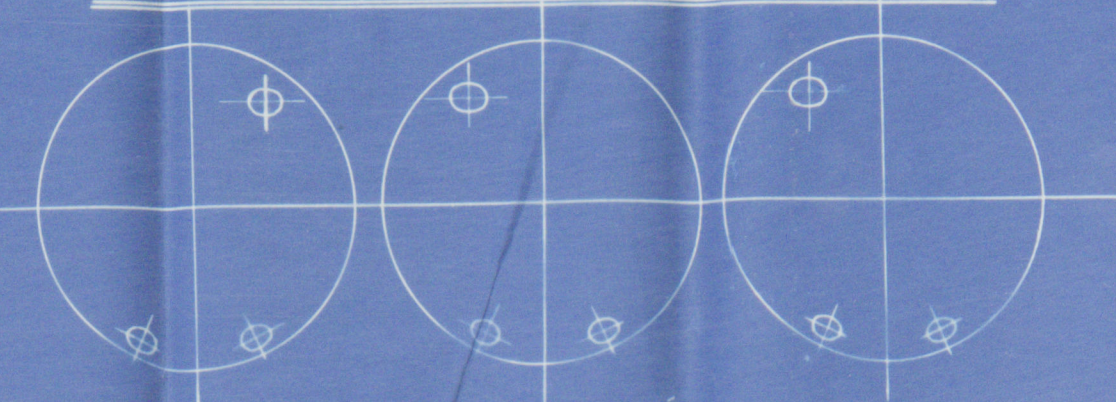
= SCALE 1 INCH = ONE FOOT. =

6.5.04

J.W.S.
9/2/04.

- POSITION OF MANHOLES -

- VIEW LOOKING FORWARD ON REAR OF BOILER -



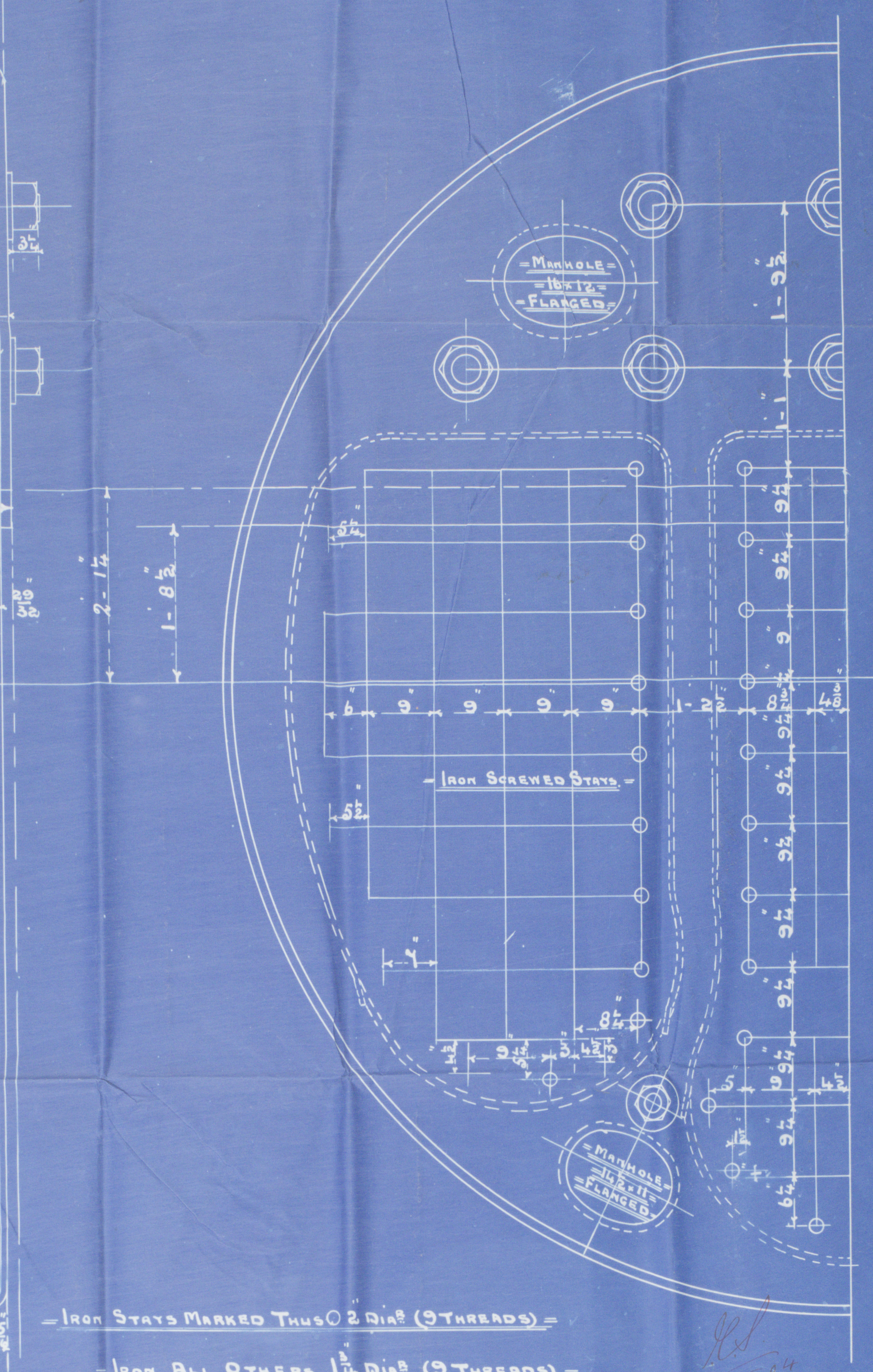
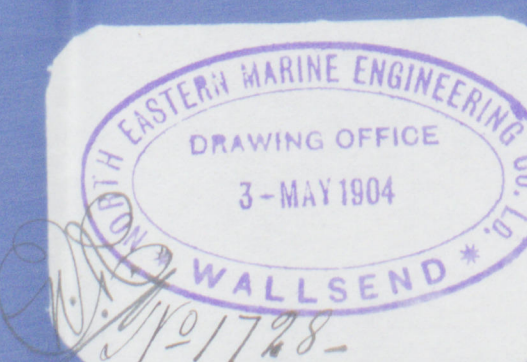
- WORKING PRESSURE = 180 LBS. -

- TEST PRESSURE = 360 -

- NOTE, ALL PLATES STAYS TO BE OF STEEL EXCEPT OTHERWISE SHOWN. -

- TENSILE STRENGTH OF SHELL PLATES AND BUTT STRAPS TO BE NOT -

- LESS THAN 20 TONS PER SQUARE INCH. -



- IRON STAYS MARKED THUS 2 DIA (9 THREADS) =
- IRON ALL OTHERS 1 1/4 DIA (9 THREADS) =

- NOTE, ALL STAYS SCREWED AND FITTED WITH NUTS. =

- FOR POSITION OF MANHOLES =

- SEE SKETCH ABOVE. - 3 THUS -

- CONTRACT 1571 -

© 2020

Lloyd's Register Foundation

W536-0131 2 1/2

N. E. M. E. Co., LIMITED, WALLSEND.

ENCLOSURE

FOR

Messrs.

Lloyd's Surveyors

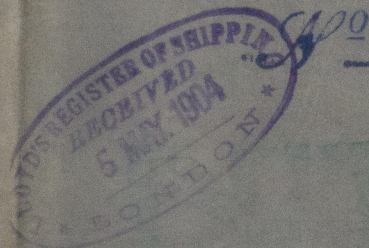
Lloyd's Register
Foundation

N.E. M. Eng
C^o 1571
Northumb^{er} S^h C^o
C 121.

180 1/2 -
3/8 "Hetherton"

70
LLOYD'S TEST
360 L.
947 15/12/04.
J. P. Hetherton

Newcastle Export



48353

W536-0131 2/2



© 2020

Lloyd's Register
Foundation