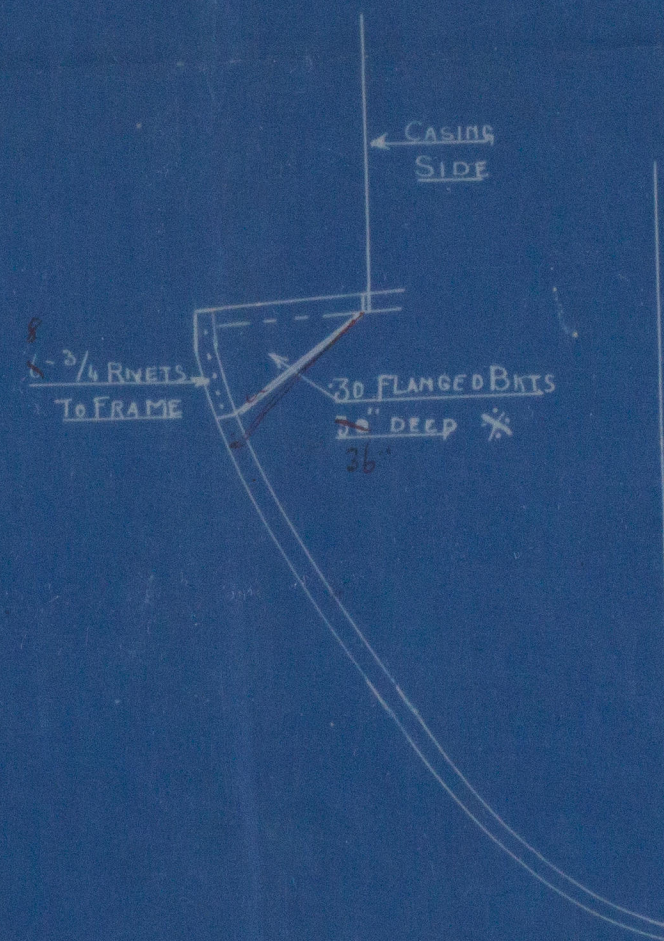
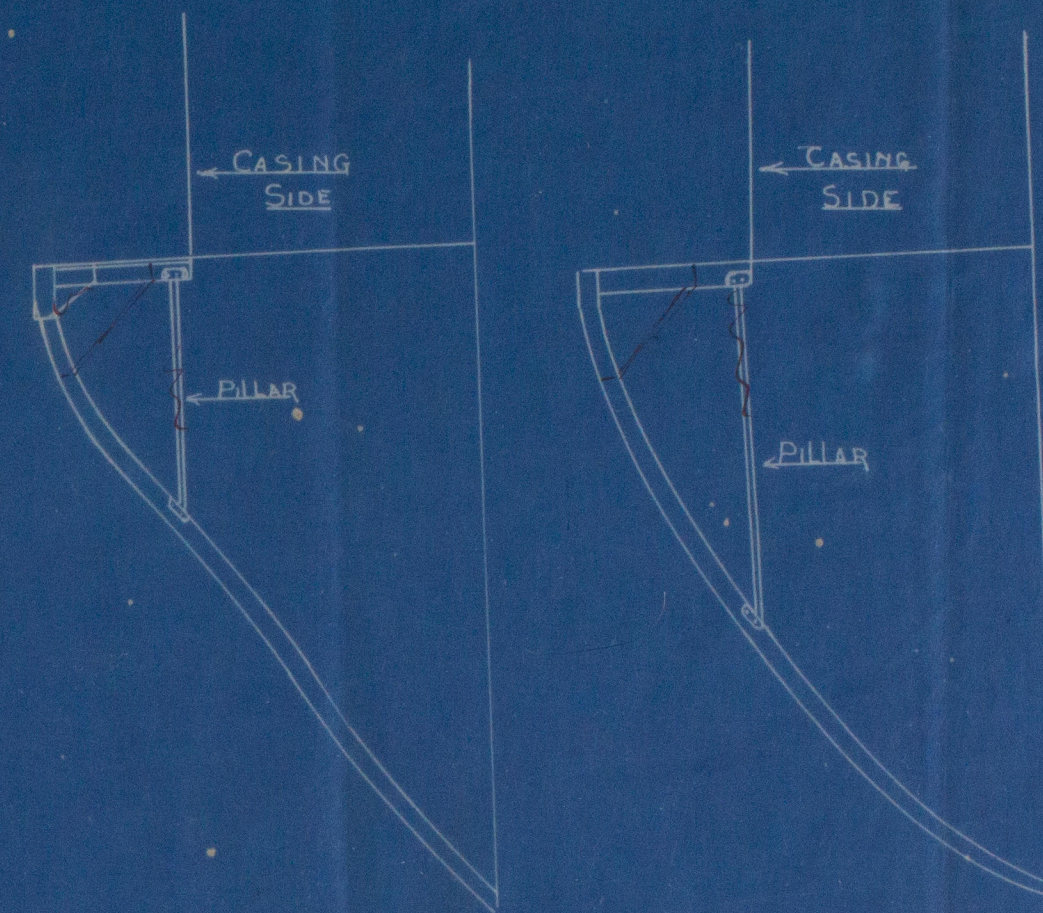
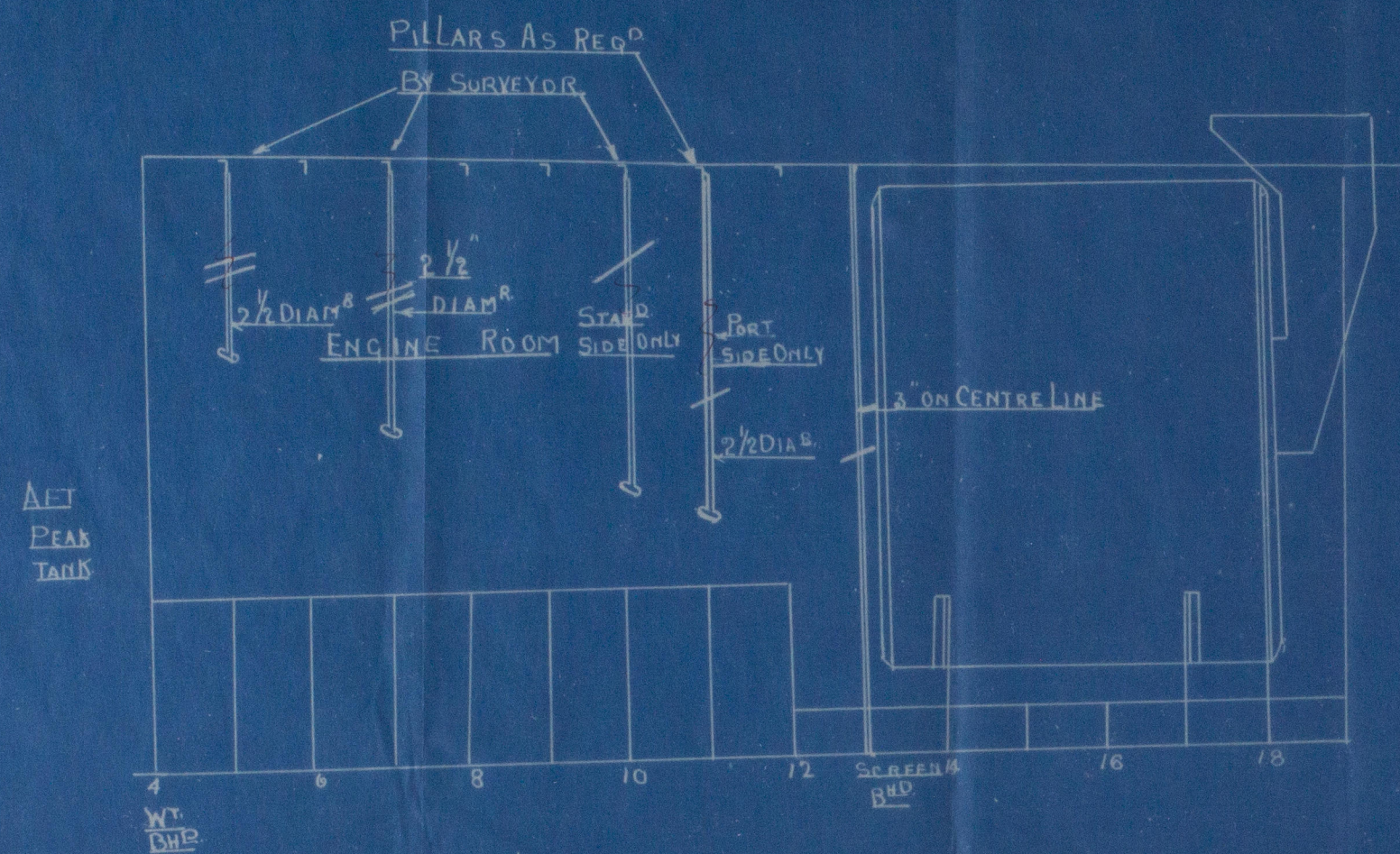


Y N^{OS} 123-4-6-7

SCALE 1/4" = 1 F^T



SECTION AT FRAME 11
SHOWING DEEP BRACKETS
SIMILAR TO THOSE FITTED
IN WAY OF HATCH
IN LIEU OF PILLARS

APPROVED
LLOYD'S REGISTER OF SHIPPING
J. Montgomery per G. Webster
DATE 18/2/21



NS 32-0304

H^d. 124, 126, 127

Brackets in Engine Room
in lieu of Pillars

Mr. J. Cran, Somerville
Lut.

S/S. Brunton

Leh 15945

LR

WS32-0304 © 2019

Lloyd's Register
Foundation