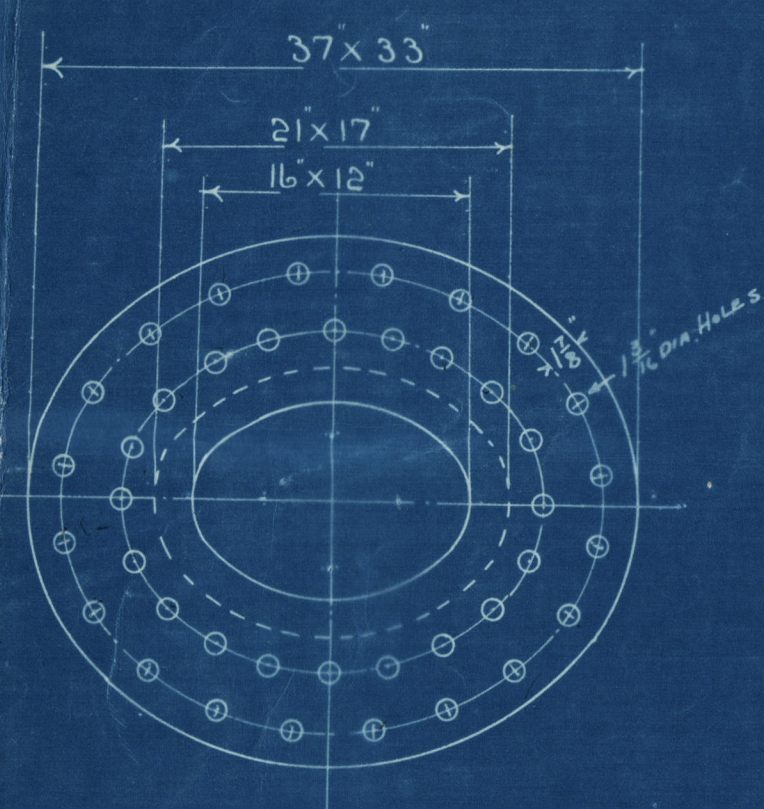


STEEL PLATES FOR 8 SINGLE ENDED BOILERS ALL TO PASS BRITISH CORPORATION SURVEY.

MARK	DESCRIPTION	N ^o OFF	LENGTH	BREADTH	THICK
1	SHELL BOTTOM	8	30'-0"	10'-0"	1"
2	TOP	8	12'-8"	10'-0"	1"
3	BUTT STRAPS OUTER	16	10'-0"	1'-6"	1"
4	INNER	16	9'-3"	1'-6"	1"
5	COMB. CH. BACK CENTRE	8	9'-8"	4'-3"	3/8"
6	WINGS	16	7'-11"	4'-11"	3/8"
7	BACK TUBE PLATE CENTRE	8	6'-1"	3'-9"	3/8"
8	WINGS	16	5'-4"	1'-8"	3/8"
9	GIRDERS	192	3'-0"	1'-4"	7/8"
10	TOP END PLATES FRONT & BACK	16			1 1/2" THICK
11	BOTTOM END FRONT	8			1 1/2" THICK
12	BOTTOM END BACK	8			1 1/2" THICK
13	COMB. CH. SIDES WINGS	16			2'-6" BROAD
14	COMB. CH. SIDE CENTRE	8			2'-6" BROAD

TENSILE STRENGTH OF PLATES MARKED 3, 4-9 TO BE 28 TO 32 TONS THE REMAINDER TO BE 26 TO 30 TONS.



HEATING SURFACE 1619 SQ. FT.
GRATE AREA SQ. FT.

SPARE GEAR
3 BOILER TUBES
ONE HALF SET
OF FIREBARS.

16x12 MANHOLE IN SHELL
7x18 DOUBLING PLATE
M^cNEIL'S RECESSED DOOR

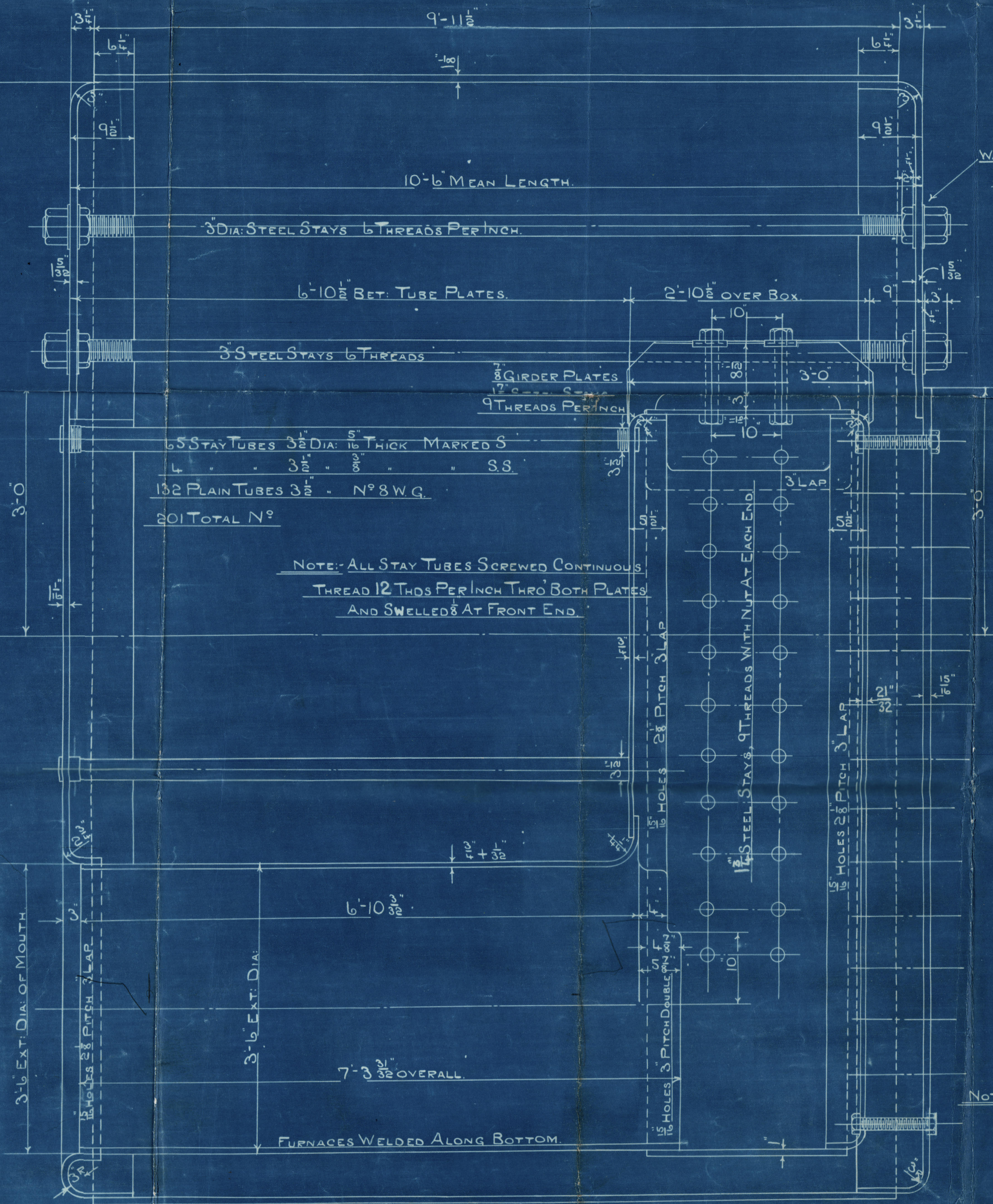
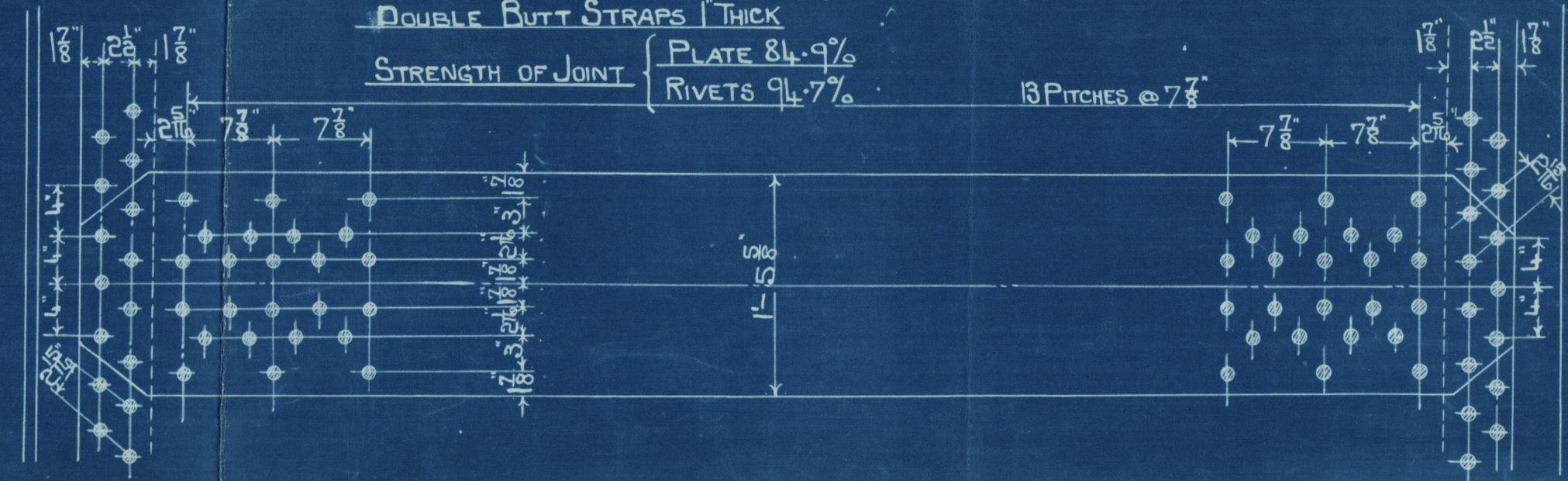
EXTRACT FROM SPECIFICATION
NOTE: ALL LONGITUDINAL STAYS
TO BE MADE A TIGHT FIT IN THE
END PLATES, & THOROUGHLY CAULKED
BEFORE THE NUTS ARE APPLIED.
NO LEAD WASHERS TO BE FITTED UNDER
STAY NUTS, BUT ARE TO BE TIGHT
WHEN FITTED METAL TO METAL.
TAYLOR'S RINGS NOT REQ^d.

BOILER 8 - OFF

WORKING PRESSURE 120 LBS. PER SQ. INCH
TESTED TO 360 LBS. BY HYDRAULIC PRESSURE.
BRITISH CORPORATION SURVEY.
SCALE 1" = ONE FOOT.

LONGITUDINAL SEAMS, 1 1/2" HOLES 1 1/2" RIVETS, 7 1/2" PITCH.
CIRCUMFERENTIAL 1 1/2" HOLES 1 1/2" RIVETS, 7 1/2" PITCH.

DOUBLE BUTT STRAPS 1" THICK
STRENGTH OF JOINT { PLATE 84-9%
RIVETS 94-7% }



NOTE: ALL STAY TUBES SCREWED CONTINUOUS
THREAD 12 THOS PER INCH THRO BOTH PLATES
AND SWELDED AT FRONT END.

WASHERS 6 DIA. X 1/2" THICK

1 1/2" MARGINAL STAYS
9 THREADS PER INCH
NUT AT EACH END.

NOTE: ALL COMB. CH. STAYS
10% ABOVE SURVEY.

Noted
S.H.M.
25/4/29
W.D.

Dragon Ring
ENCLOSURE TO
The Boston Deep Sea Fishing
& Ice Co.
From R. & W. HAWTHORN, LESLIE & Co., Ltd.,
ST. PETER'S WORKS, NEWCASTLE-ON-TYNE.

R. & W. HAWTHORN, LESLIE & CO. LTD.
ENGINEERS & SHIPBUILDERS
ST. PETER'S WORKS
18 APR. 1929
NEWCASTLE-ON-TYNE

MESSRS SMITH DOCK CO

ORDER NO 7039

W532-0098

DRAWING NO 85

FOR POSITION OF LIFTING LUGS, SEE UPTAKE D^g N^o 88.

Trawler "DRAGON ROUGE"

BOILER PLAN.

RETAIN *cl*



© 2019

Lloyd's Register
Foundation

Ws32-0098 112