



MIDSHIP SECTION OF N°298 T.S.S.

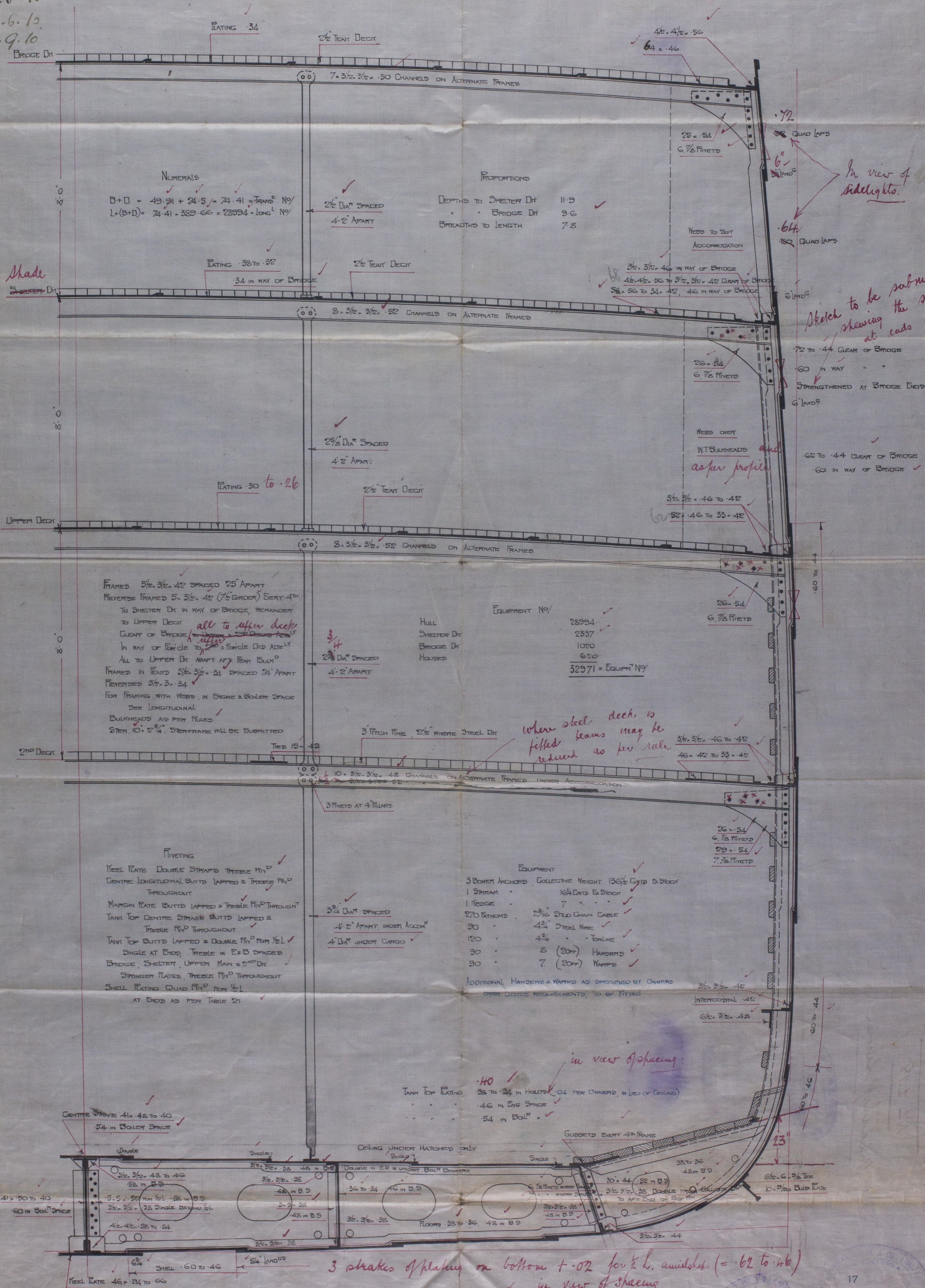
DIMENSIONS 389'-8" 49'-11" 24'-0" MID TO UPPER DECK

TO CLASS 100 A.I. LLOYDS

SCALE 1/2" = 1' FOOT

Class 100 A.I. Shade Deck

25.7.10.
17.3.10
22.3.10.
13.4.10
24.4.10
9.5.10
28.6.10.
15.9.10



In view of
sidelights.

Sketch to be submitted
showing the sheathing
at ends of bridge.

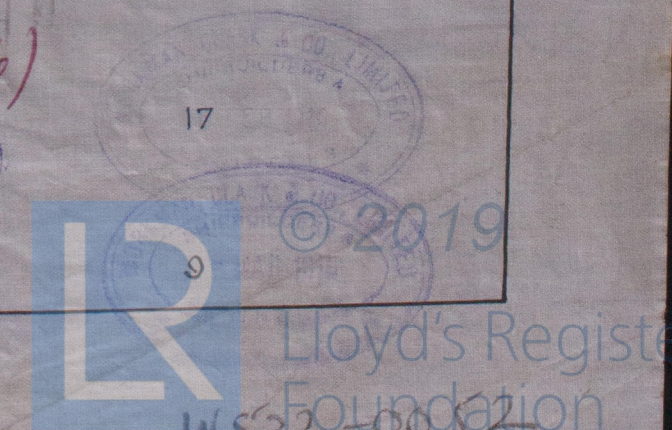
where steel deck is
fitted beams may be
reduced as per rule.

in view of spacing

40
38 to 24 in hold
46 in Eng Space
54 in Bol' Space

3 strakes of plating on bottom + 0.2 for L. amidships (= .62 to .46)
in view of spacing

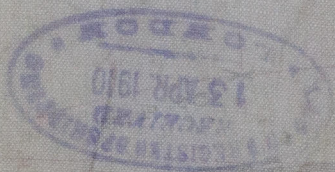
SHELL PLATING ENTIRELY WITHIN RANGE OF DOUBLE BOTTOM
EXCLUDING KEEL, REDUCED .04 WHERE .54 & UNDER .64
IN THICKNESS .52 WHERE .52 IN THICKNESS



Workman Clark & Co.

No 298

Midship Section



© 2019

WS32

Lloyd's Register
Foundation