



MIDSHIP SECTION

DIMENSIONS: LENGTH BP 404'10" BREADTH MLD 52'2 1/2" DEPTH MLD 30'3"

ISHERWOOD SYSTEM PATENT

SCALE 1/2" = 1 FOOT

SECTION THROUGH HOLD

SHELL LONGITUDINAL RIVETING

RIVETS EACH SIDE OF BUTTS	BRACKETS TO BULKHEADS
6 DIAS APART	5 7/8 DIA

-DITTO-

-DITTO-

-DITTO-

5 DIAS APART IN WAY OF TRANSVERSES & BULKHEADS FOR 10 RIVETS EACH SIDE 6 DIAS ELSEWHERE

-DITTO-

4 DIAS APART IN WAY OF TRANS & BULKHEADS FOR 10 RIVETS EACH SIDE 6 DIAS ELSEWHERE

-DITTO-

-DITTO-

4 DIAS APART FOR 4 RIVETS E

-DITTO-

TANK TOP LONGITUDINALS 5 DIAS APART FOR 4 RIVETS EACH SIDE OF TRANSVERSES & BULKHEADS 7 DIAS ELSEWHERE

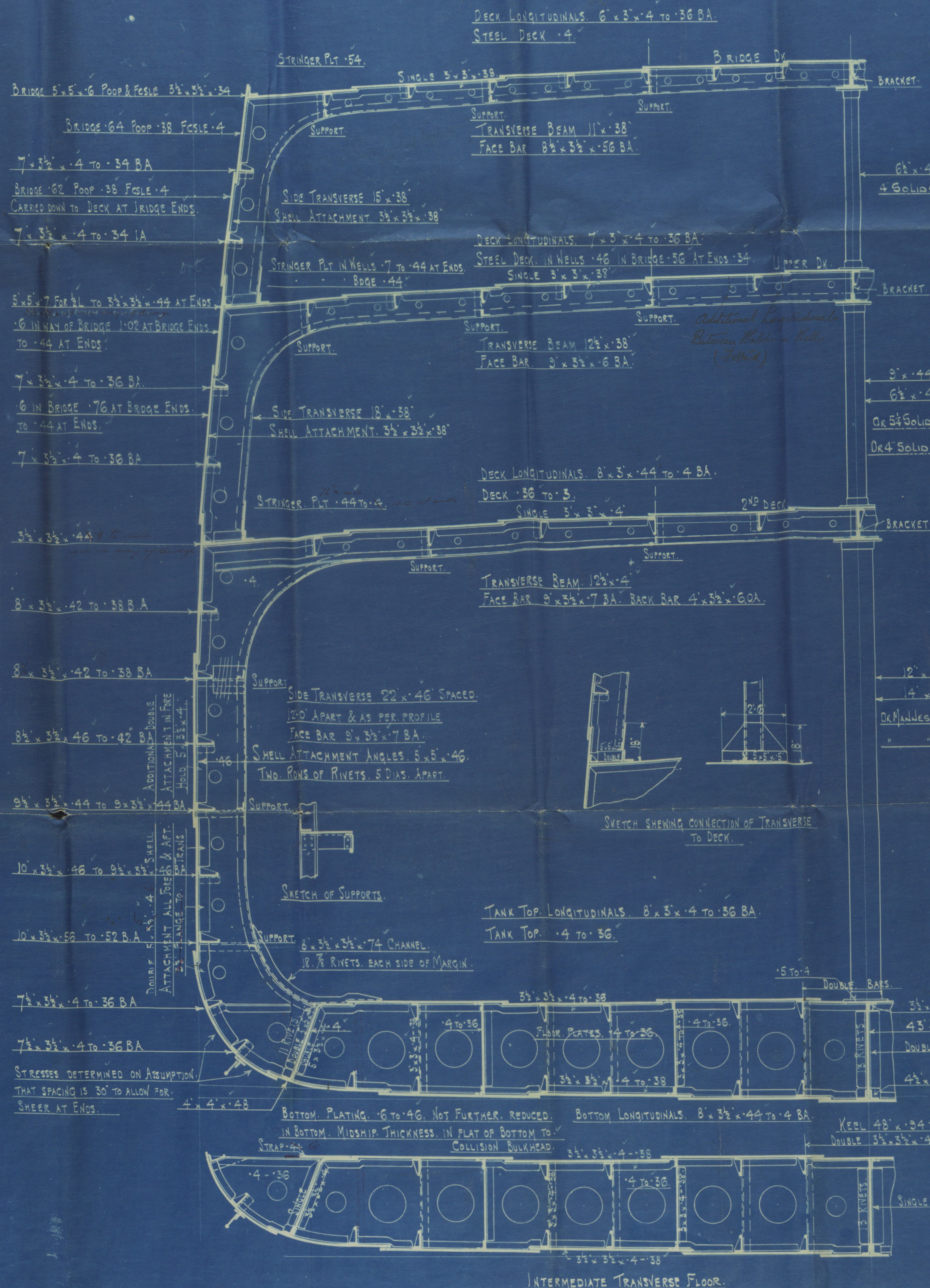
PLATE LONGITUDINALS IN BOTTOM RIVETS SPACED 7 DIAS APART

Messrs. W. Hamilton & Co. Ltd.

PORT, GLASGOW.

Nº 220

W529-0049



NUMERALS

BREADTH MLD	52'20"
DEPTH MLD	30'25"
LENGTH BP	82'45" TRANS N° 404'85"
	333'18'25" LONG N°
	1/2 BRIDGE BK 10'58" UPPER DK 13'38"

6 1/2 x 3 1/2 x 4 BA

6 1/2 x 3 1/2 x 4 BA

6 1/2 x 3 1/2 x 4 BA

6 1/2 x 3 1/2 x 4 BA

7 1/2 x 3 1/2 x 42 BA

7 1/2 x 3 1/2 x 42 BA

9 1/2 x 3 1/2 x 44 BA

9 1/2 x 3 1/2 x 46 BA

10 1/2 x 3 1/2 x 52 BA

7 1/2 x 3 1/2 x 4 BA

7 1/2 x 3 1/2 x 4 BA

Bottom Longitudinals 8 1/2 x 4 1/2 to 4 BA

Keel 48 x 34 to 66

Double 3 1/2 x 3 1/2 x 4 to 38

Single 5 x 5 x 44

3 1/2 x 3 1/2 x 4 to 38

INTERMEDIATE TRANSVERSE FLOOR

Deck Longitudinals 6 1/2 x 4 BA

Transverse Beam 12 x 38

Face Bar 5 x 3 1/2 x 48 OA

Deck Longitudinals 6 1/2 x 4 BA

Transverse Beam 12 x 38

Face Bar 6 x 3 1/2 x 48 OA

Deck Longitudinals 7 1/2 x 44 BA

Transverse Beam 12 x 4

Face Bar 9 x 3 1/2 x 7 BA

Side Transverse 22 x 46 Spaced

11'0" APART & AS PER PROFILE

Face Bar 9 x 3 1/2 x 7 BA

Tank Top Longitudinals 7 1/2 x 4 BA

Double Bars to Transverses & Girders

Under Engines

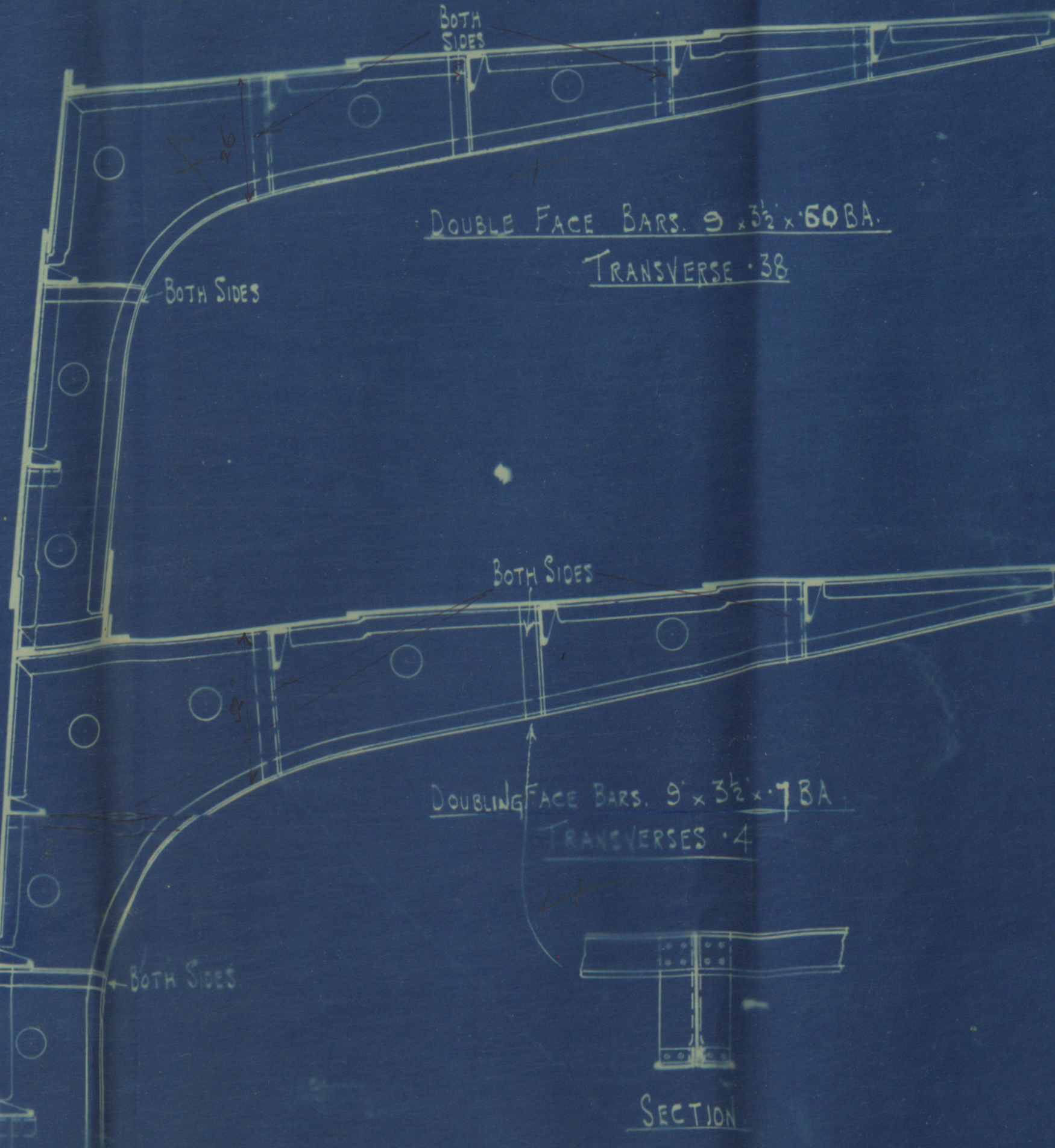
Bottom Longitudinals 2 1/2 x 44 BA

INTERMEDIATE TRANSVERSE FLOOR

SECTION IN WAY OF HALF BEAMS

PROMISED METHOD OF DISPENSING WITH HATCH SIDE PILLARS

1/8 SCALE



RIVETING

KEEL DOUBLE STRAPPED & TREBLE RV FOR 2 LENGTH SINGLE STRAPS AT END

SHELL TREBLE RIVETED FORE AFT

SHEERSTRAKE QUAD # RV FOR 2 LENGTH TO TREBLE AT ENDS

CENTRE GIRDER BUTTS TREBLE

BRIDGE BK STRINGER BUTTS TREBLE RV THROUGHOUT

UPPER TREBLE FORE AFT

2nd TREBLE TO DOUBLE RV

BRIDGE BK PLATING DOUBLE RV BUTTS

UPPER FOR 2 L TO SINGLE AT ENDS

SECOND DOUBLE FOR 2 L SINGLE AT ENDS

TANK TOP CENTRE BUTTS TREBLE

REMAINDER BUTTS DOUBLE FOR 2 LEN TO SINGLE AT ENDS

RIVETING OF DECK LONGITUDINALS IN ALL DECK

RIVETS SPACED 6 DIAS APART BUTTS BRACKETS

6 EACH 6 AMOSHS 5 ENDS

TO SHELL IN TANK 5 DIAS APART

TO TANK TOP 5 DIAS APART

TO TANK TOP 5 DIAS APART

TO TANK TOP 5 DIAS APART

TO TANK TOP 5 DIAS APART

TO TANK TOP 5 DIAS APART

TO TANK TOP 5 DIAS APART

TO TANK TOP 5 DIAS APART

TO TANK TOP 5 DIAS APART

TO TANK TOP 5 DIAS APART

220
Midship Section
W^m Hamilton & Co Ltd. L.S. No. 220



S.S. Santa Rosalia
Greenock. Repot. No. 16123

RETAIN

TUE OCT. 31. 1911



© 2020

W 529-0049 Lloyd's Register
Foundation