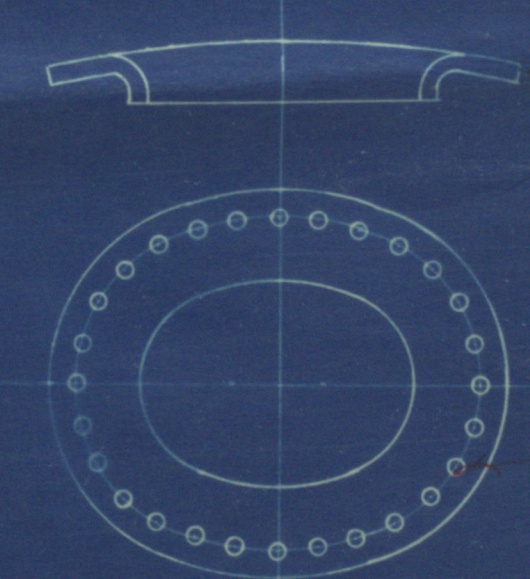


15/8/10

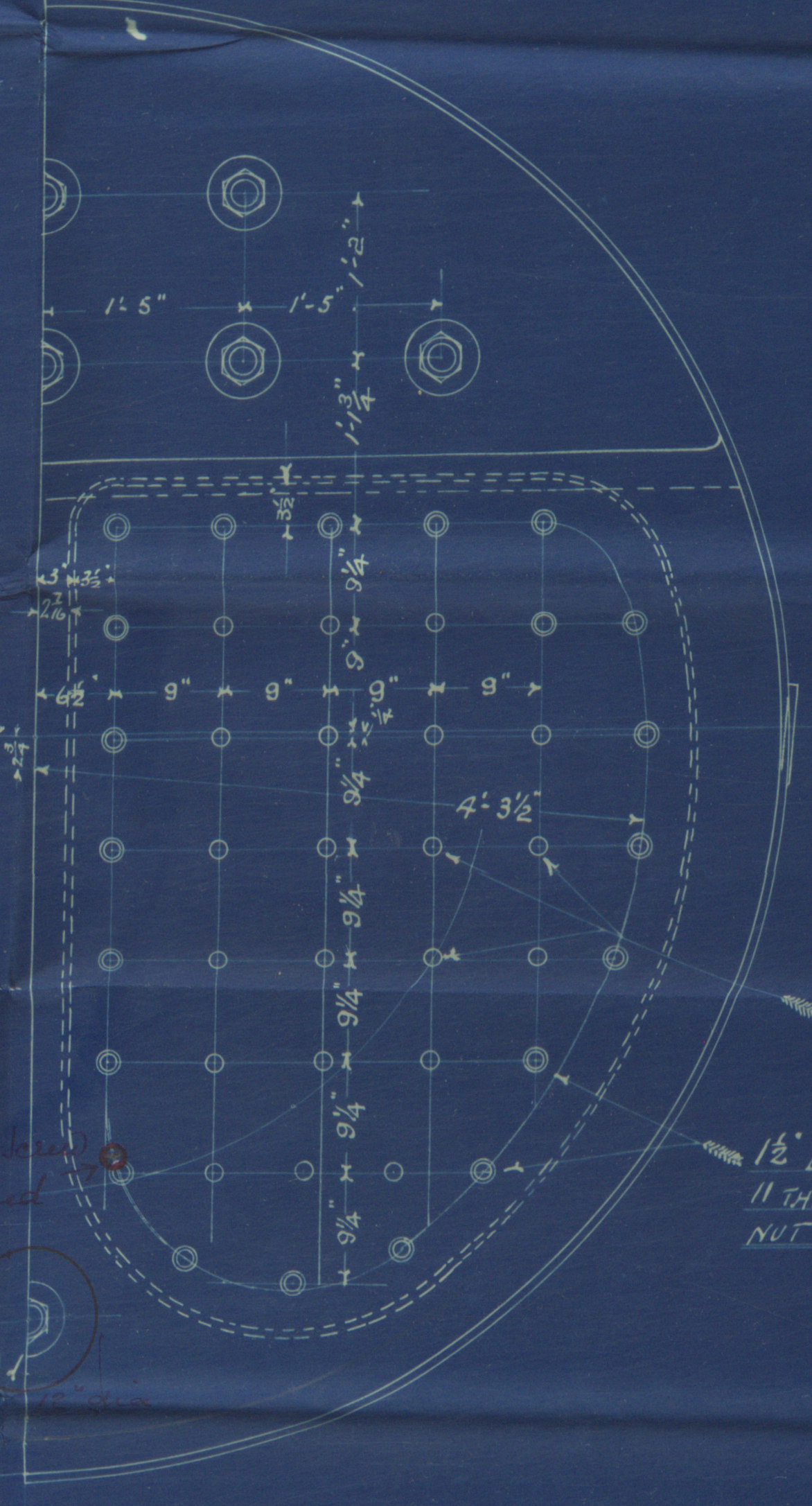
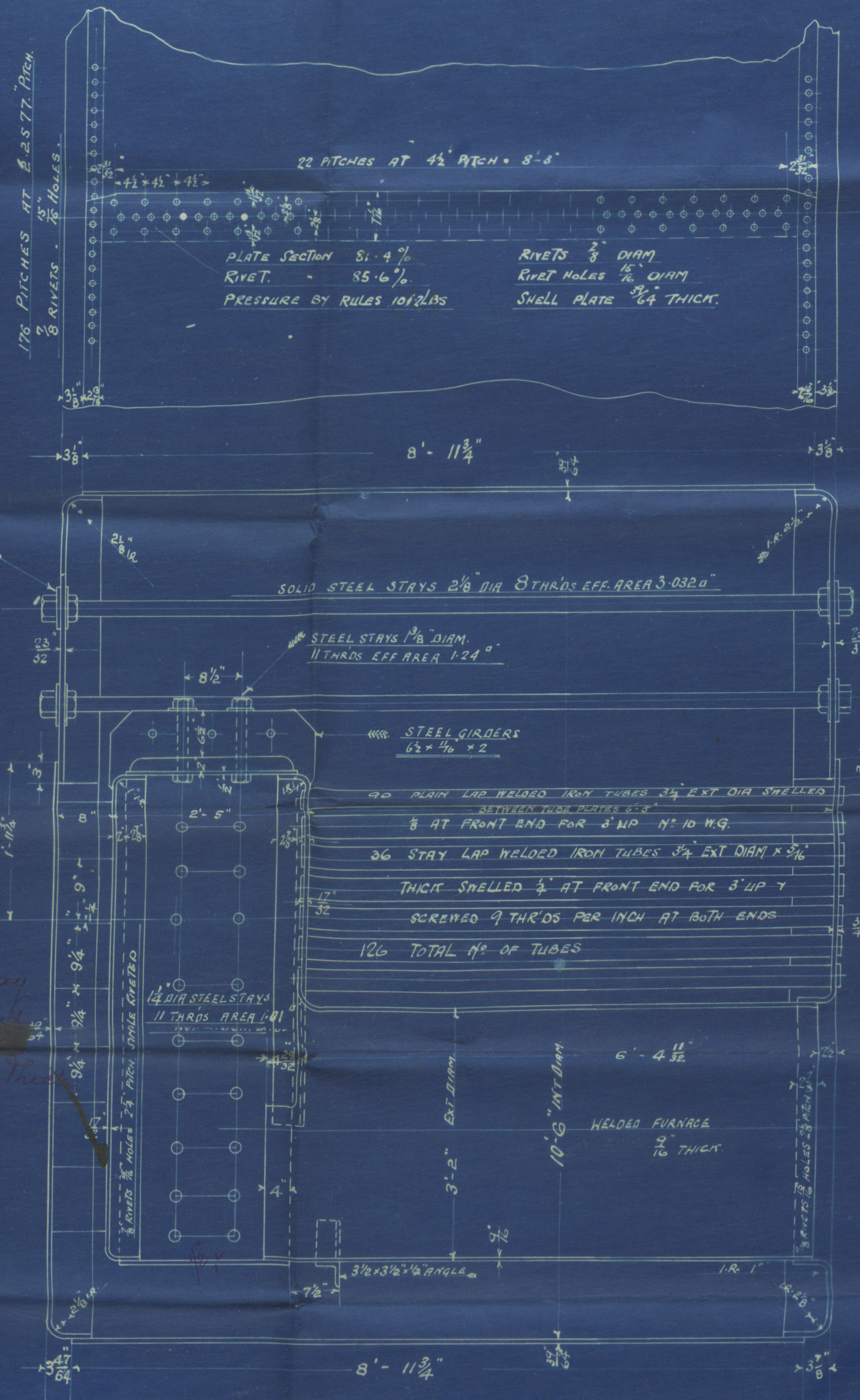


MANHOLE COMP. PLATE $\frac{3}{8}$ " THICK.
 $\frac{7}{8}$ RIVETS, 16 HOLES, $\frac{3}{4}$ " FLANGE.
 (MCNEIL'S DOOR) 16 x 12"
 POSITION TO BE GIVEN LATER.



15" x 11" MANHOLE
 FLANGE $\frac{1}{4}$ " DEEP
 MCNEIL'S DOOR

Additional stay
 to be fitted
 to the inside of the
 shell



18" DIA. STEEL STAYS
 11 THRS EFF AREA 1.24"
 NUT ON BOTH ENDS.
 12" DIA. STEEL STAYS
 11 THRS EFF AREA 1.5"
 NUT ON BOTH ENDS.

28" DIA. STEEL STAY STAYS
 EFF AREA 3.082"
 WASHER $\frac{1}{2}$ " x $\frac{1}{4}$ "
 POSITION 12" x 12"

9.9.10
 10.5.10

9.9.10
 10.5.10

LONGITUD. SEAMS	TREBLE RIVETED LAP JOINT.
CIRCUM.	SINGLE " "
PLATE SECTION	81.4"
RIVET	85.6"
WORKING PRESSURE	100 LBS PER SQ. INCH
TEST	200 " " "
ALL HOLES DRILLED IN PLACE PLATES THEN TAKEN APART & BURRS REMOVED.	

GRATE & HEATING SURFACE	
TUBES	684.4 f
FURNACES	62.6 "
COMB. CHAMBERS	134.8 "
TOTAL HEATING SURFACE	883.8
" GRATE	30 f
RATIO GRATE TO HEATING	1:29.46
FIRE BARS	5'-0" LONG.

THICKNESSES	
SHELL	$\frac{3}{8}$ "
TOP FRONT & BACK	$\frac{1}{2}$ "
BACK BOTTOM	$\frac{3}{8}$ "
FRONT TUBE PLATE	$\frac{1}{4}$ "
BACK " "	$\frac{1}{32}$ "
CC. BACK	$\frac{1}{32}$ "
C.C. WRAPPER	$\frac{1}{2}$ "
GIRDERS	2x6" x $\frac{1}{16}$ "
FURNACE	$\frac{9}{16}$ "
MANHOLE COMP. PLATE	$\frac{3}{8}$ "

SHELL	28 To 32 Tons
GIRDERS	" " " "
MANHOLE COMP. PLATE	" " " "
END PLATES	26 " 30 "
OTHER PLATES	" " " "
FURNACE	" " " "
SOLID STAYS	28 " 32 "
SCREENED STAYS	26 " 30 "
RIVET BARS	26 " 30 "

— DONKEY BOILER. N° 376. —
 10'-6" INT. DIAM. 9'-6" MEAN LENGTH. W.P. 100 lbs.
 — TOPASS LLOYDS. — I OFF THUS.
 SCALE. 1" = 1 FOOT. 11th AUGUST. 1910.

Kuel's Donkey Boiler No 346.

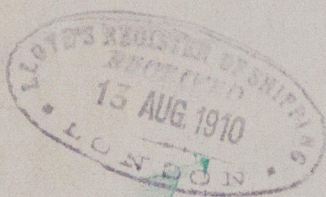
by

J. G. Kuecia 16th St.

for

H. Hannelton 16th St. 220th

100 # working pressure



S.S. "Santa Rosalia"
Greenock Report No. 16123

TUE 31 1911

RETAIN

© 2020

Lloyd's Register

W529-0048 Foundation