

F.E.

Inspected by Chief Ship Surveyor _____

Received from Chief Ship Surveyor _____

VESSEL'S NAME Steel S.S. "GASTELU" Rpt. Cebu No. 903

The remarks of the Chief Ship Surveyor are desired on this case for the consideration of the Classing Committee.

("The endorsement to contain a succinct summary of any repairs that have been required and to show the cause or causes of such repairs, and also to bring out clearly any exceptional features in connection with the case, so that the Classing Committee may have all the salient points presented in the endorsement."—Extract from Sub-Committee's Report, 24/5/92.)

Transverse No. 73.41

Depth "d" _____

Framing: Table No. -Description Longitudinal framing as approvedLongitudinal No. 24298Proportions $\frac{\text{Length}}{\text{Depth}} = \frac{9.98}{1}$

Bridge Deck Sheerstrake and other scantlings as approved for vessels built on the longitudinal system

This vessel appears to have been built in accordance with the Rules and the approved plans, and it is submitted she is eligible to be classed

✠ 100-A-1. (Steel)

1st Dk (Steel) 2nd Dk (Steel) in hulls & holdframes, longitudinal framing
Cell IB 284' 872t, FPT. 63t, APT 175t
FK, 5BH, Cam, Rlyphs A.C.P. P31 B91 F32'

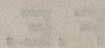
M AK
18.8.21



© 2021

Lloyd's Register
Foundation

WS28 0187



...of the Chief Surveyor are attached on this case for the consideration of the Classification Committee.

Depth "6"

Description

Proportions
Length
Depth

This vessel appears to have been built in accordance with the rules and the approved plans, and it is submitted she is eligible to

RETAIN



© 2021

Lloyd's Register
Foundation