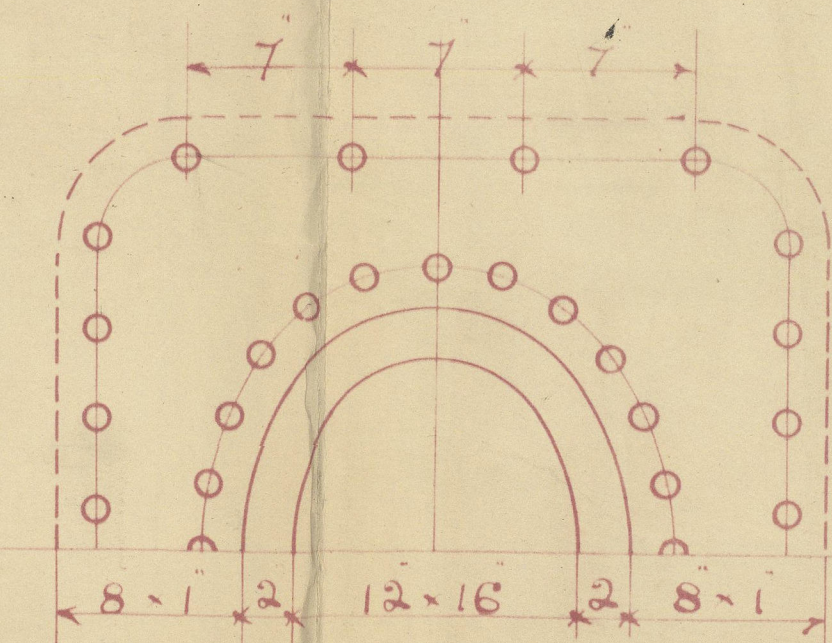
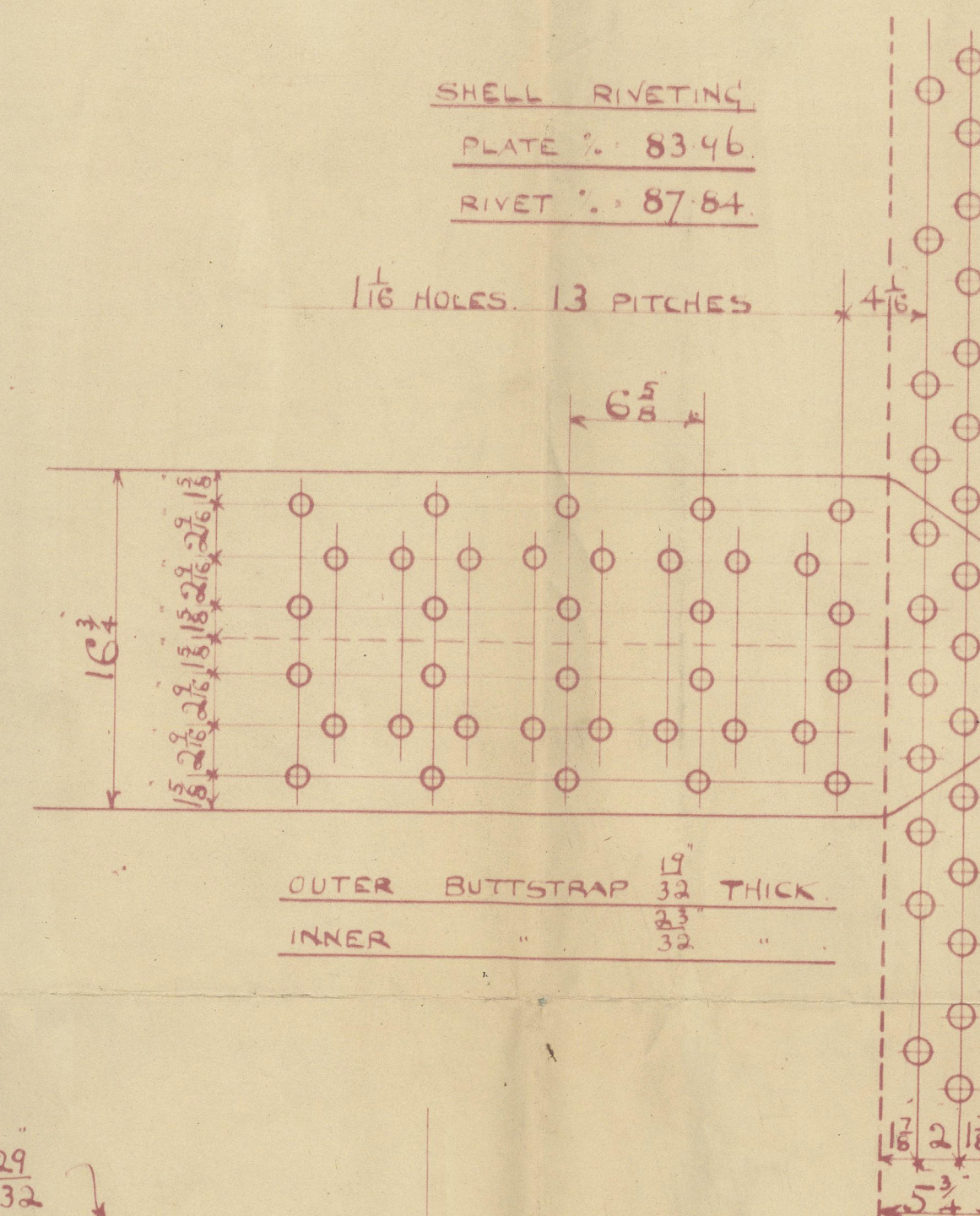


5810

SHELL & BUTTSTRAPS	29-33 TONS.
CIRDERS & MAINSTAYS	28-32 "
BALANCE OF PLATES RIVETS & SCREWSTAYS	26-30 "



MANHOLE RING RIVETING.  
48-1 $\frac{1}{8}$  HOLES 2 $\frac{3}{4}$  P. AT INNER ROW



CIRCUM. SEAMS  $1\frac{1}{4}$  H. 38<sup>5</sup> P. DOUBLE RIVETING  
CONTINUOUS BELOW FURNACE £

PLATE% = 66.51  
RIVET% = 44.43

COMBUSTION CHAMBER SCREW STAYS.

SCREWED 9 TPI. INTO BOTH PLATES.

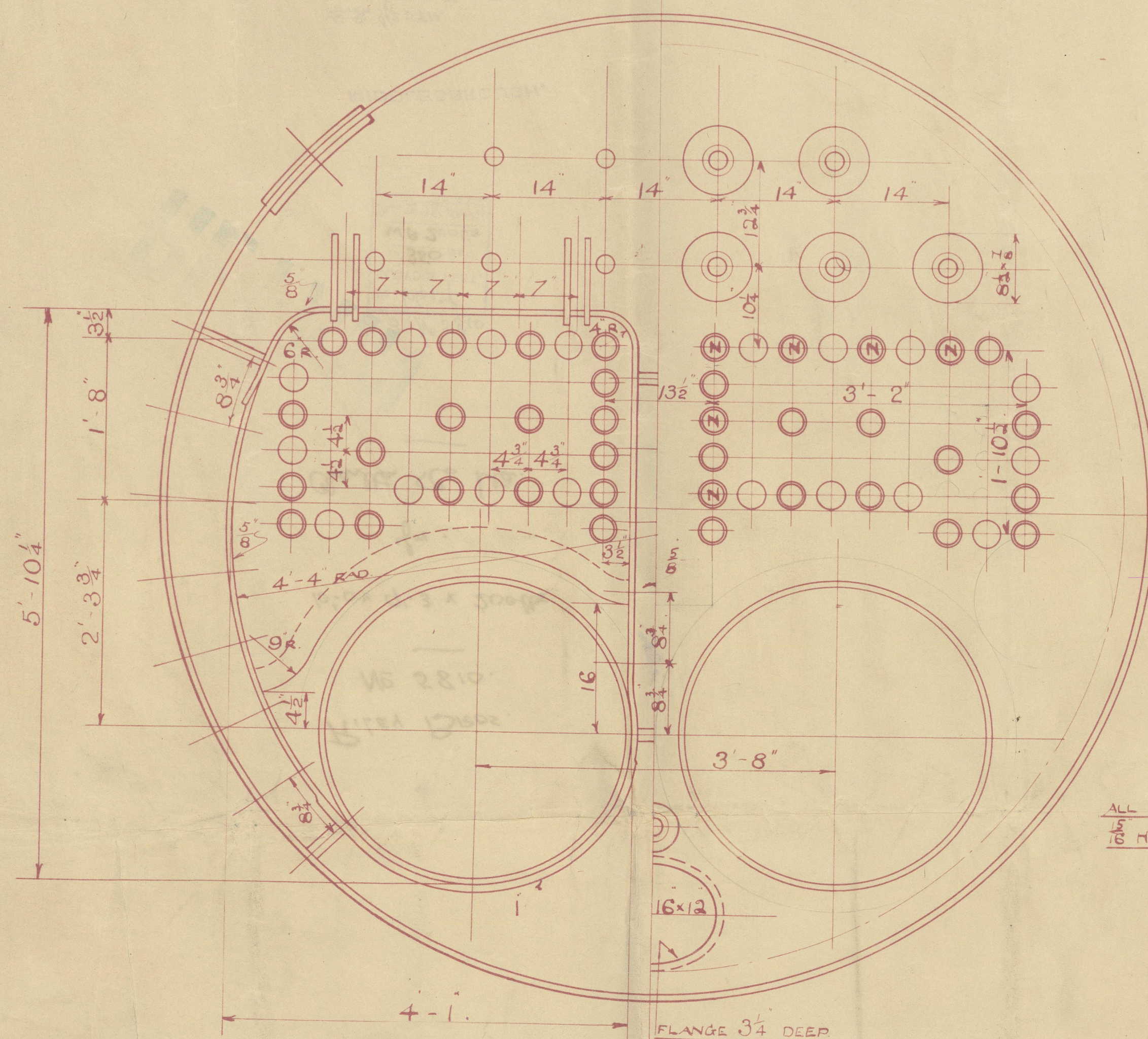
SINGLE NUT OUTSIDE AT BOTH ENDS.

AT BACK MARK O  $1\frac{5}{8}$  DIA.

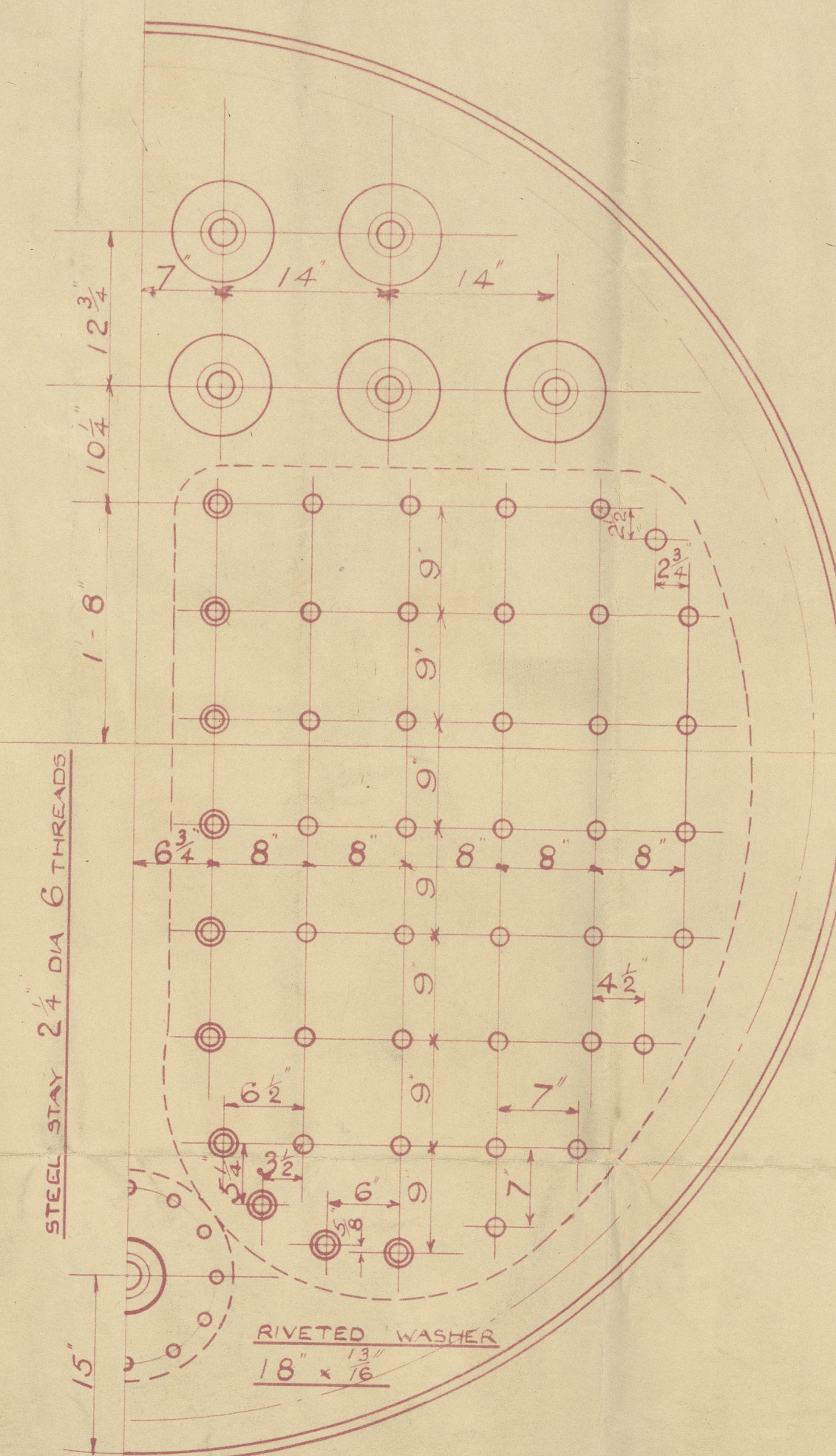
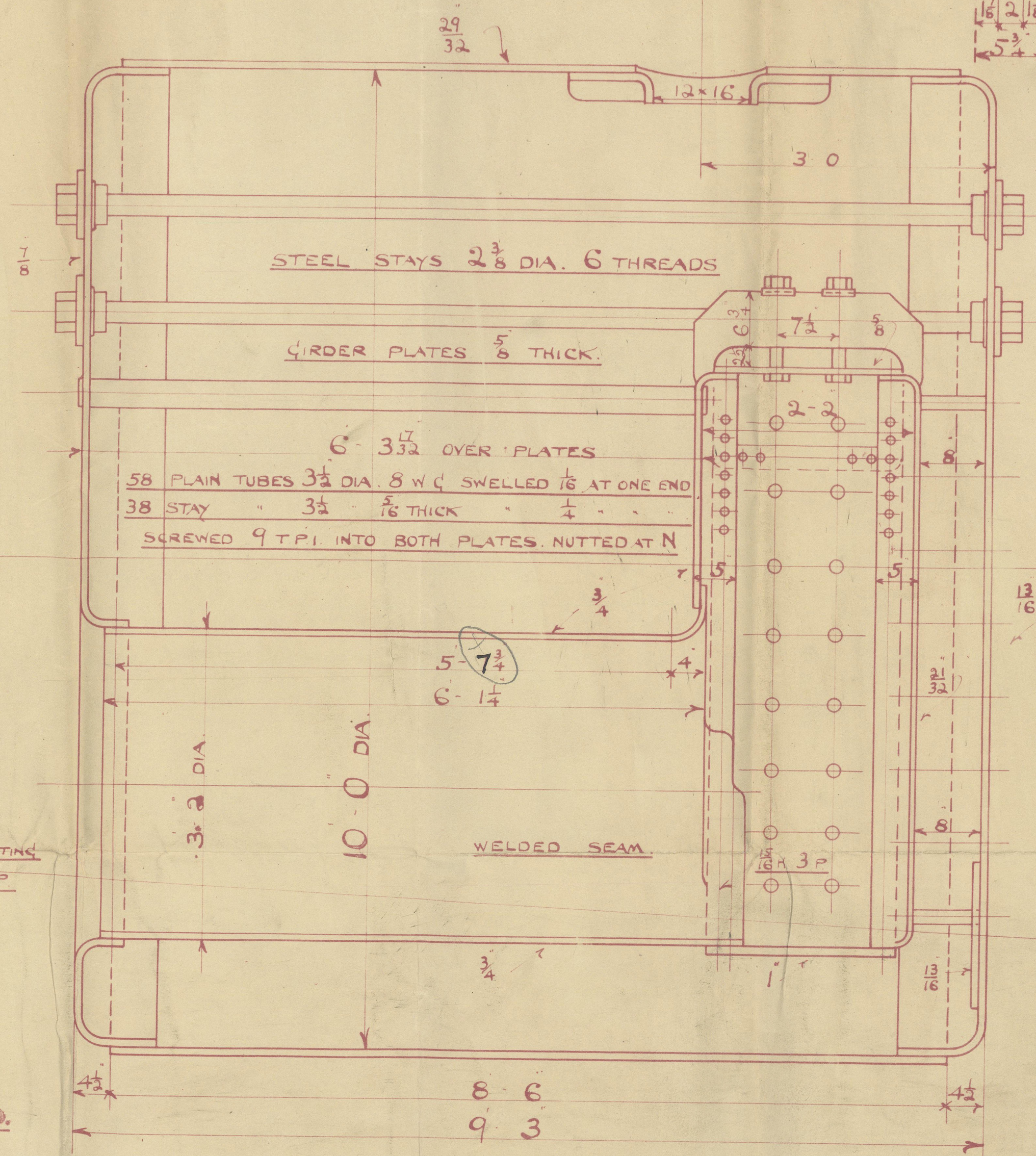
" " "  $1\frac{7}{8}$  "

" " "  $1\frac{3}{4}$  "

IN GIRDERS  $1\frac{1}{2}$



ALL INTERNAL RIVETING  
15 H. 28 P. 3 LAP.



HEATING SURFACE	720 sq. ft.
GRATE AREA (4-6 BARS)	27.3 sq. ft.



RILEY BROS.

No. 5810.

10'-0" x 9'-3" x 200lbs.

for.

Charlton Co. La.

B. No 5810

RETAIL

No.	6617
LLOYD'S TEST.	
350 lbs.	
WP 200lbs.	
No. 228 P.T.B.	

MIDDLESBROUGH.

~~S.S.~~ 4/0 5810. 2020  
MDB. RPT. No. 13218.

Lloyd's Register  
Foundation

W526-0234