

DELETE WORDS WHICH DO NOT APPLY.

The Crew *are, are not,* berthed in the bridge house.
The arrangements to enable them to get backwards and forwards from their quarters *are, are not* satisfactory.

Length of Bulwarks in well

Area of freeing ports required by Para. 11 (e) each side of vessel

Freeing Ports (each side of vessel)

Sq. Ft.

Ft.	Tenths.	Ft.	Tenths.	No.		Sq. Ft.
	x		x	}	=	
	x		x			

Total deficiency = Sq. Ft.

Total excess =

Vertical distance from bottom of keel or from top of deck at side amidships to lower edge of lowest side scuttle.

(N.B.—This dimension need not be reported unless the sill of the lowest side scuttle would be less than 6 inches above Indian Summer Load Line if assigned under the tables.)

Do all the Frames extend to the top height in the Poop?

Do. do. do. in the Raised Quarter Deck?

Do. do. do. Bridge House?

Do. do. do. Forecastle?

To what height do the Reverse Frames extend?

Has the Poop or Raised Quarter Deck an efficient Iron Bulkhead at the fore end?

Give particulars of the means for closing the openings in Bulkhead

Is the Poop or raised Quarter Deck connected with the Bridge House?

State whether the Bridge House efficiently covers the Engine and Boiler Openings

Has the Bridge House an efficient Iron Bulkhead at the fore end?

Give particulars of the means for closing the openings in Bulkhead

Describe how and to what extent it is Stiffened, give scantlings and spacing of Angle Irons, Plates, etc.

Has the Bridge House an efficient Iron Bulkhead at the after end?

How are the openings closed?

Is the forecastle at least as high as the main or top-gallant rail?

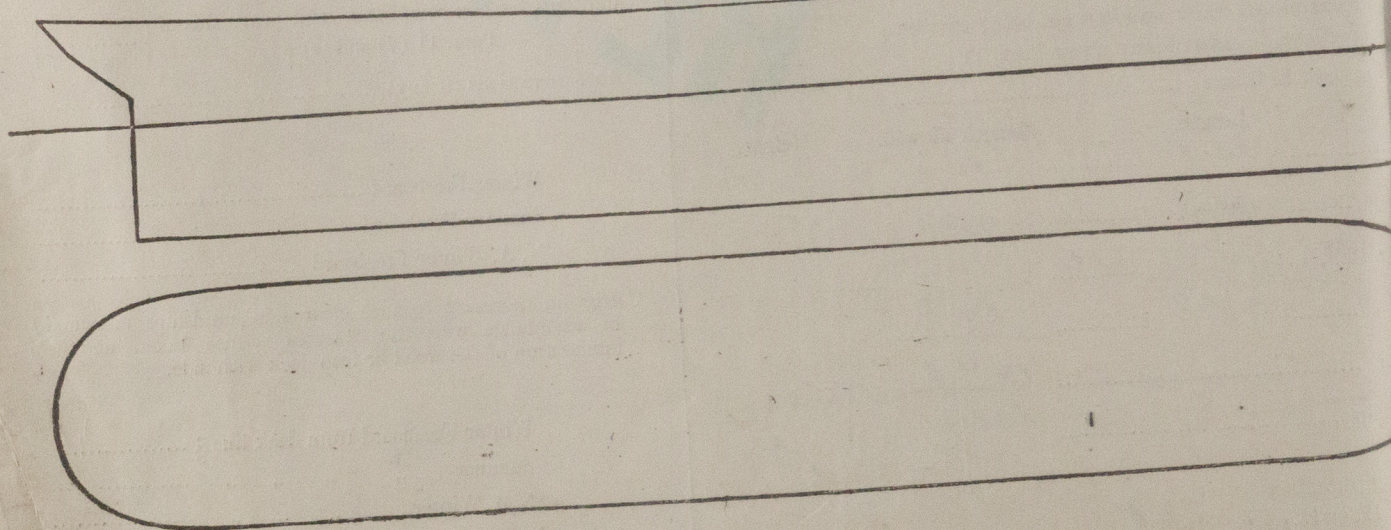
Has the Forecastle an efficient Iron or Wood Bulkhead at its after end?

Are the Hatchways efficiently constructed? What is the thickness of the Hatches?

State the height of the Coamings in fore well? In after well

Are the exposed parts of the Engine and Boiler Casings efficiently constructed?

State any special features in the construction of the Vessel



Show hereon the actual measurements of sheer, draft, erections, breaks in line of floors, &c.

Owners

Address

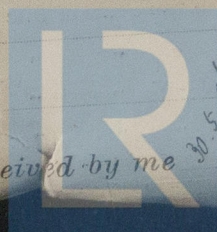
Fee £

5 5 0

APPLIED FOR IN LONDON

Have etc

Received by me



© 2020

Lloyd's Register
Foundation