

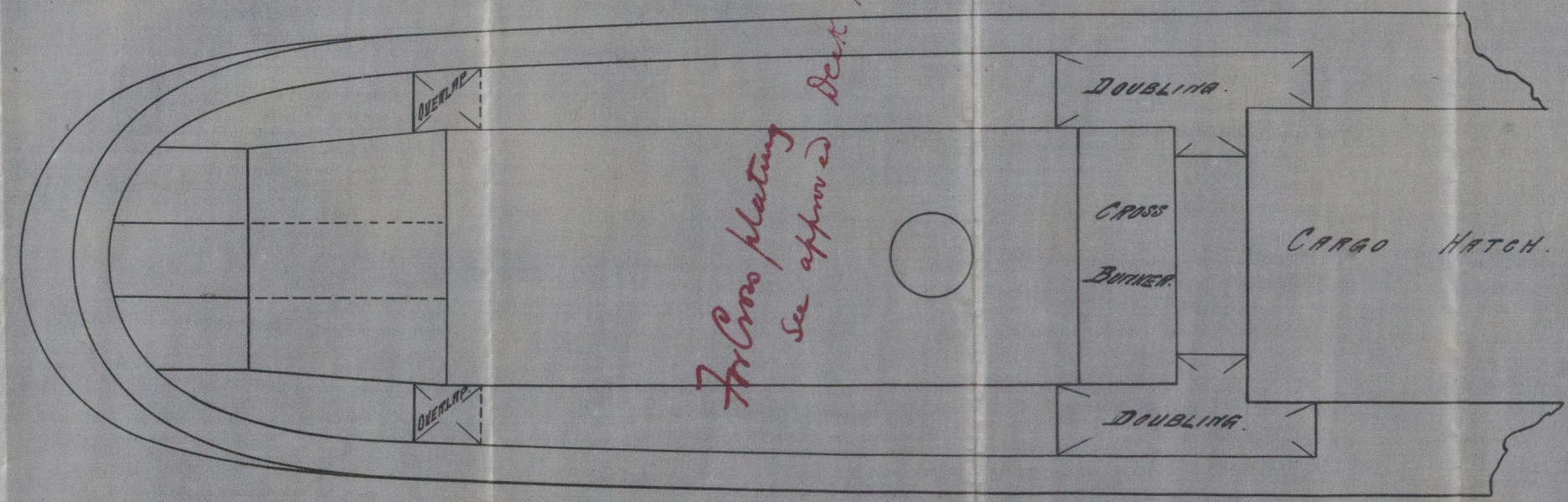
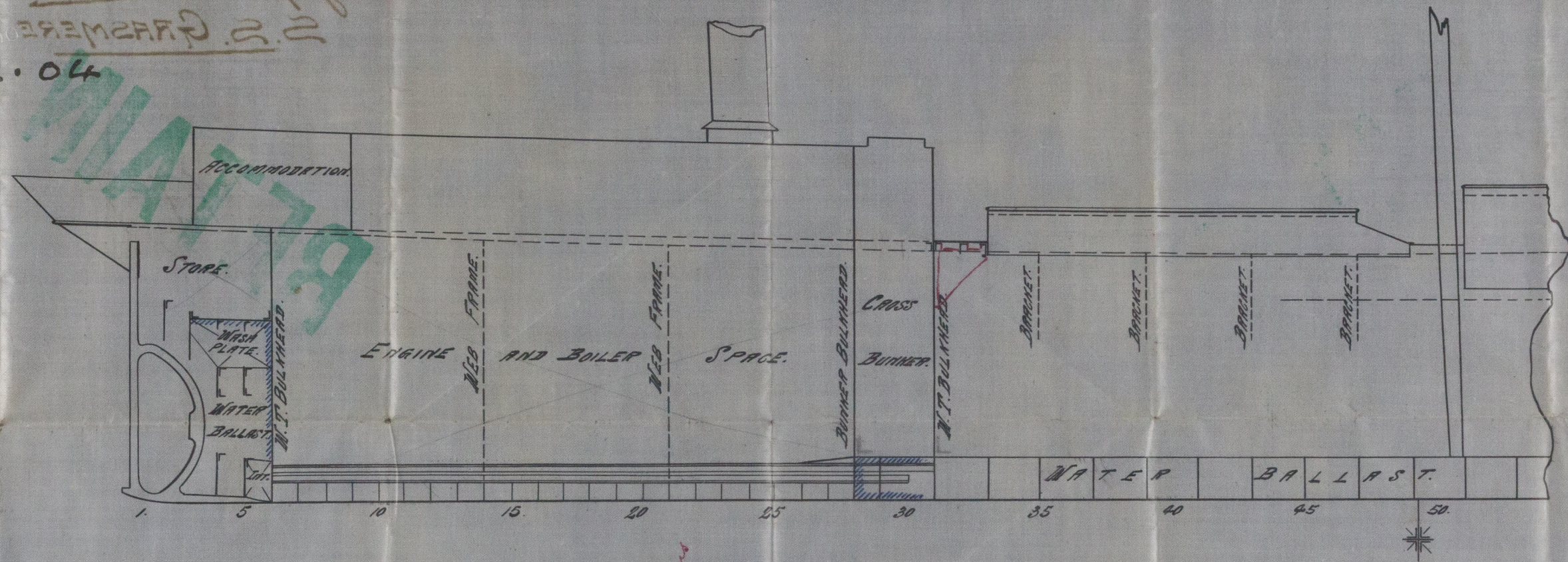
— AMENDED PROFILE IN WAY OF RAISED QUARTER DECK. —

— S. S. No 121. —

— SCALE 1/8" = 1 FT. —

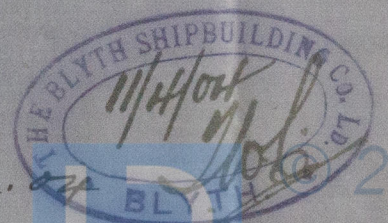
*13th Dec 1911*  
*13th Dec 1911*  
*Amended Profile in*  
*way of Quarter Deck*  
*22. GRAMER*

14.4.04



*For cross plating*  
*See approved Deck plans*

C.B.  
 14.4.04





MS25-0136

Blyth S B Co's  
SS No 121.

Amended Profile in  
way of Raised Quaterdeck

S. S. GRASMERE

Newcastle Report



© 2020

Lloyd's Register  
Foundation