

DR No 15483

HEATING SURFACE	Sq. Ft.
944 TUBES 8'-0" LONG x 2 1/2" EXT. DIA.	4943
8 FURNACES 7'-6 3/4" x 42 1/2" MEAN	280
FIREBOX TOPS & SIDES	280
BACK TUBE PLATES	105
FRONT	91
TOTAL H.S. IN ONE D.E. BOILER	5784
THREE D.E. BOILERS	17352

GRATE SURFACE	Sq. Ft.
8 FURNACES 40" INSIDE DIA. x 5'-6" BARS	146.667
TOTAL G.S. IN 3 D.E. BOILERS	440

H.S.	I.S.
G.S. = 39.4	G.S. 33.7
STEAM SPACE FROM 9" ABOVE FIREBOX TOP	= 840 CUB. FT.
WEIGHT OF WATER (FRESH) TO 9"	= 54 1/2 TONS COLD, 7 1/4 TONS AT 170°
DRAUGHT AREA THRO' TUBES	= 22.57 SQ. FT.

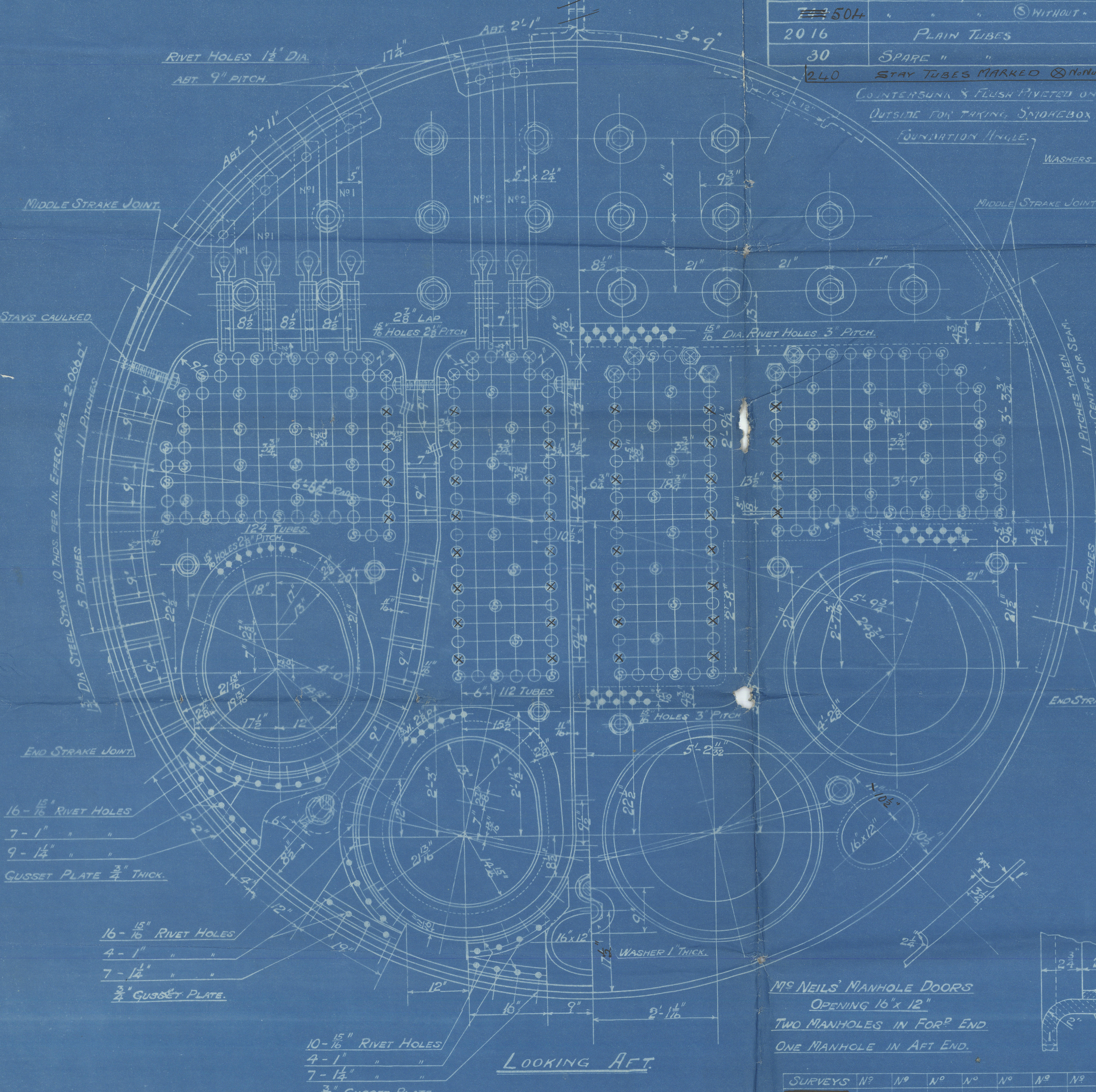
APPROXIMATE WEIGHT OF BARE BOILER = 93 TONS
STEEL STEAM SPACE STAYS.

3" DIA. OF BODY 3 1/4" DIA. OF SCREWED ENDS 8 THDS. PER IN.

DEPTH OF OUTSIDE NUTS = 3 1/4"
INSIDE = 1 1/2"

N° OF PER SHIP	DESCRIPTION	LENGTH
72	STAY TUBES MARKED WITH NUTS	8'-3"
2016	PLAIN TUBES	8'-3"
30	SPARE "	8'-3"
240	STAY TUBES MARKED WITH NUTS	8'-3"

COUNTERSUNK & FLUSH RIVETS ON OUTSIDE FOR TAKING SPRINGBOX FOUNDATION 1/4" IN.

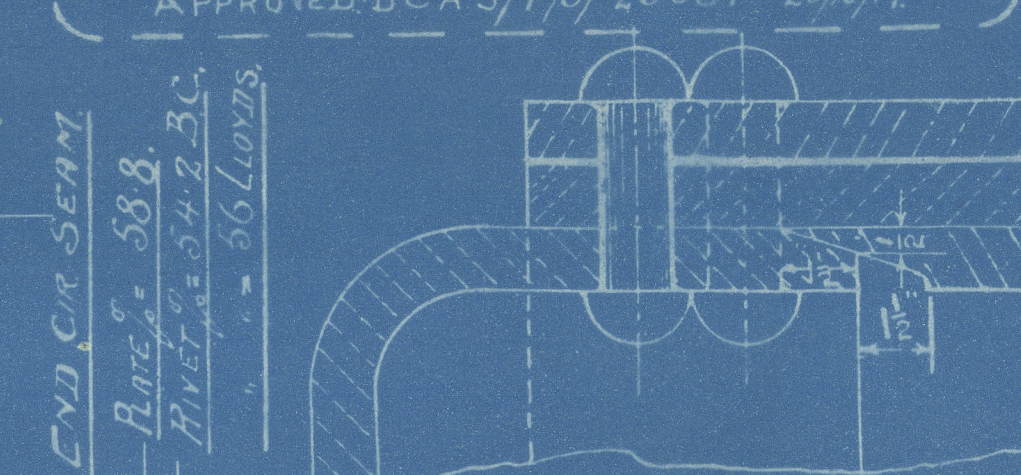


LOOKING AFT

M/S NEILS' MANHOLE DOORS
OPENING 16" x 12"
TWO MANHOLES IN FORW. END
ONE MANHOLE IN AFT. END.

SURVEYS N°	N°	N°	N°	N°	N°	N°
LOYDS						
CHIEF APPROVAL						

WORKMAN CLARK & CO LTD
ENGINE BUILT BELFAST
DRAWING NO 21908 DATE 27-9-17
DRAWN BY H.C.S.
CHECKED BY
TRACING CHECKED BY
APPROVED BCAS/T/S/25051-20/10/17



IRON STAY TUBES MARKED WITH NUTS
10 THDS. PER IN. EFF. AREA = 2.057 SQ. IN.

IRON STAY TUBES MARKED WITH NUTS
10 THDS. PER IN. EFF. AREA = 1.7016 SQ. IN.

TUBE ENDS IN SPRINGBOX
PLAIN TUBES EXPANDED
STAY " CAULKED ON OUTSIDE
TUBE ENDS IN COMB. CHAMBER
PLAIN TUBES EXPANDED
STAY " W/ BEADEN ONLY

SEPARATE DIMS FOR LIFTERS
6 PLATES 3'-6" x 16 1/2" x 1 1/2"
NO LUGS 8" H+H

BODY OF STAYS 3" DIA EFF. AREA = 7.068 SQ. IN.
ENDS SWELLED TO 3 1/4" DIA. SCREWED 5 THDS. PER INCH
ALL STAYS TO BE ANNEALED AFTER SWELLING.

PLAIN TUBES 2 1/2" EXT. DIA. 8 L.W.G. THICK SWELLED 1/16" AT FRONT END.

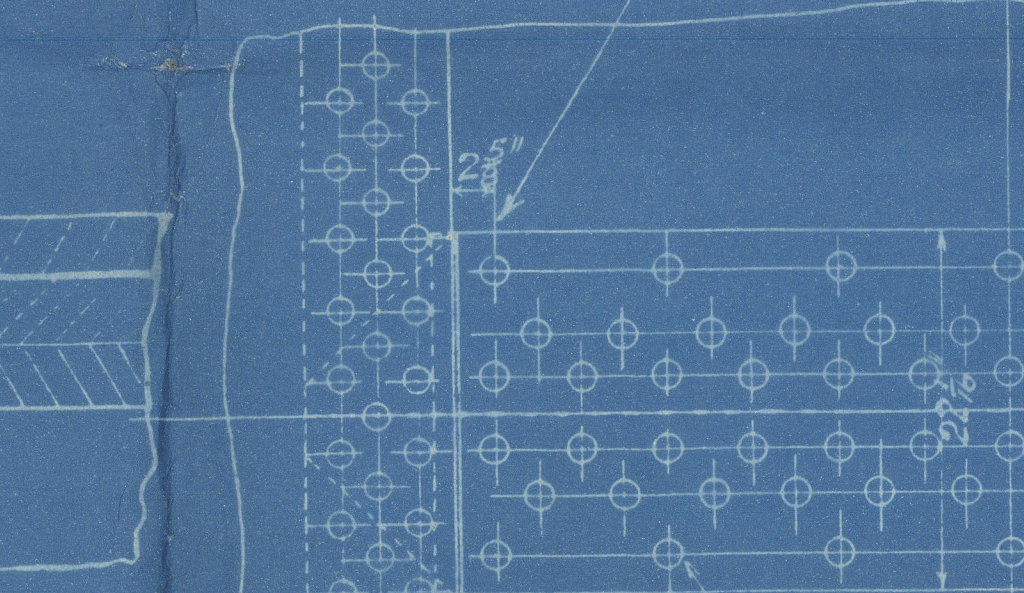
2" DIA. STEEL STAY
SCREWED 8 THDS. PER IN. EFF. AREA = 2.639 SQ. IN.

DEIGHTON SECTION
TENSILE STRENGTH OF FURNACES
AS NEAR 26 TONS AS POSSIBLE BUT NOT UNDER

FURNACES 3/8" THICK

ALL MATERIAL STEEL EXCEPT TUBES & SLING STAYS WHICH ARE IRON.

BRITISH CORPORATION
PLATE 7/8 = 10.5-15 = 85.7%
RIVET 7/8 = 5 x 1 7/8 x 23 x 1 7/8 = 88.4%
WP = 20.4 (23.5-1) 85.7 = 202 LBS



TENSILE STRENGTH OF SHELL PLATES & BUTT STRAPS 28 TO 32 TONS PER SQ. IN.

GIRDER PLATES 28-32
ALL OTHER PLATES 26-30
ALL RIVET HOLES DRILLED IN PLACE.

OUTSIDE BUTT STRAPS = 1 1/8" THICK
INSIDE = 1 1/8"

ALL RIVET HOLES 1 1/2" DIA.

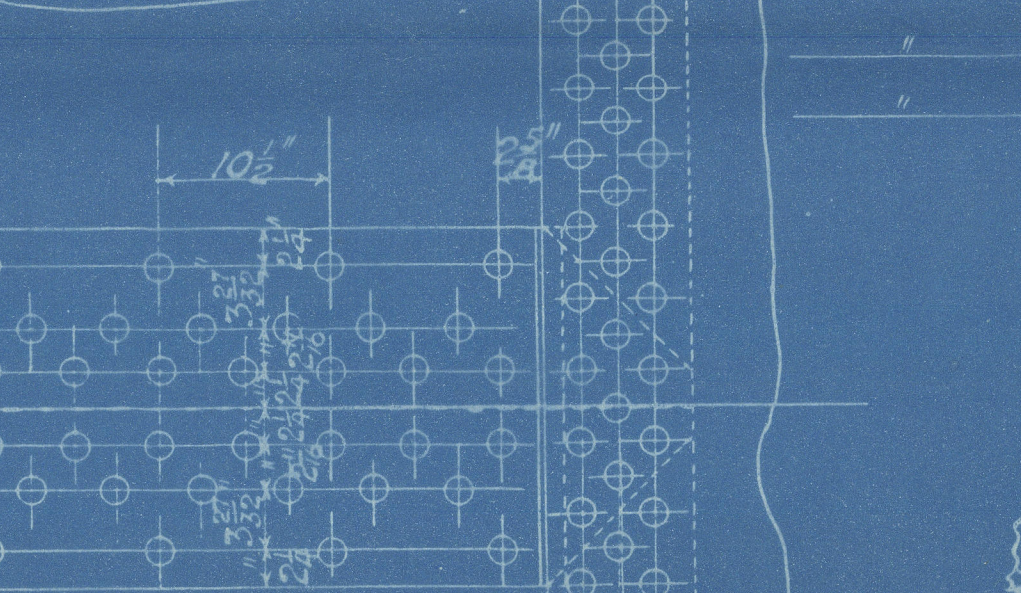
ALL RIVET HOLES 1 1/2" DIA.

ALL RIVET HOLES 1 1/2" DIA.

ALL RIVET HOLES 1 1/2" DIA.

ALL RIVET HOLES 1 1/2" DIA.

BRITISH CORPORATION
PLATE 7/8 = 10.5-15 = 85.7%
RIVET 7/8 = 5 x 1 7/8 x 23 x 1 7/8 = 88.4%
WP = 20.4 (23.5-1) 85.7 = 202 LBS



TENSILE STRENGTH OF SHELL PLATES & BUTT STRAPS 28 TO 32 TONS PER SQ. IN.

GIRDER PLATES 28-32
ALL OTHER PLATES 26-30
ALL RIVET HOLES DRILLED IN PLACE.

OUTSIDE BUTT STRAPS = 1 1/8" THICK
INSIDE = 1 1/8"

ALL RIVET HOLES 1 1/2" DIA.

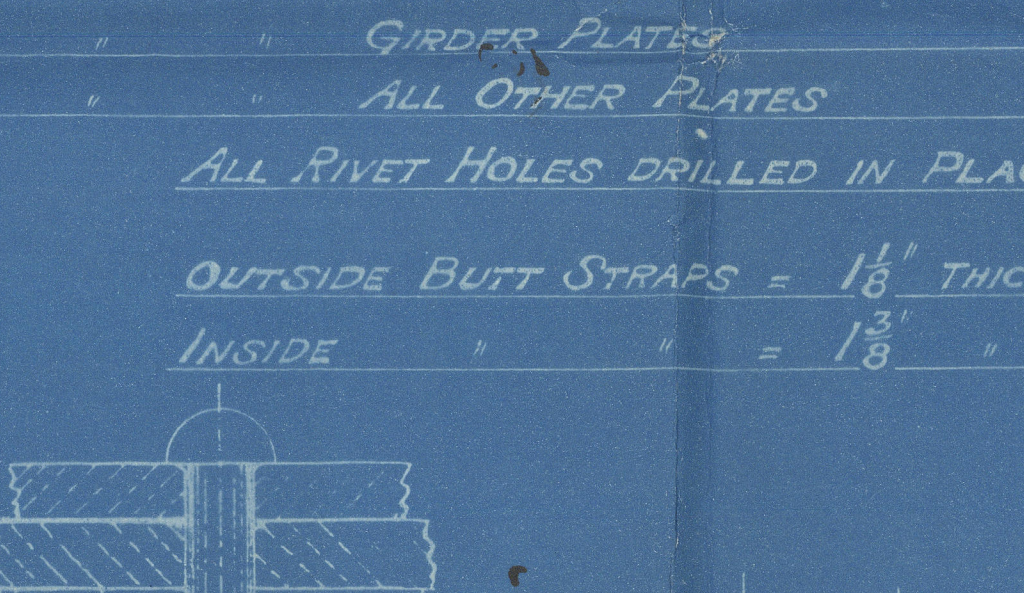
ALL RIVET HOLES 1 1/2" DIA.

ALL RIVET HOLES 1 1/2" DIA.

ALL RIVET HOLES 1 1/2" DIA.

ALL RIVET HOLES 1 1/2" DIA.

BRITISH CORPORATION
PLATE 7/8 = 10.5-15 = 85.7%
RIVET 7/8 = 5 x 1 7/8 x 23 x 1 7/8 = 88.4%
WP = 20.4 (23.5-1) 85.7 = 202 LBS



TENSILE STRENGTH OF SHELL PLATES & BUTT STRAPS 28 TO 32 TONS PER SQ. IN.

GIRDER PLATES 28-32
ALL OTHER PLATES 26-30
ALL RIVET HOLES DRILLED IN PLACE.

OUTSIDE BUTT STRAPS = 1 1/8" THICK
INSIDE = 1 1/8"

ALL RIVET HOLES 1 1/2" DIA.

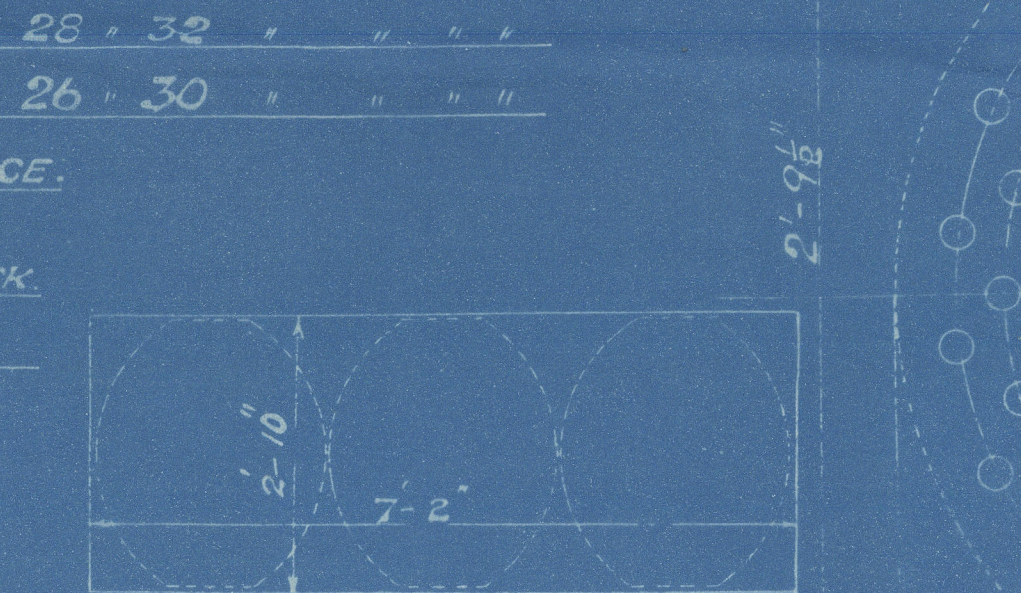
ALL RIVET HOLES 1 1/2" DIA.

ALL RIVET HOLES 1 1/2" DIA.

ALL RIVET HOLES 1 1/2" DIA.

ALL RIVET HOLES 1 1/2" DIA.

BRITISH CORPORATION
PLATE 7/8 = 10.5-15 = 85.7%
RIVET 7/8 = 5 x 1 7/8 x 23 x 1 7/8 = 88.4%
WP = 20.4 (23.5-1) 85.7 = 202 LBS



TENSILE STRENGTH OF SHELL PLATES & BUTT STRAPS 28 TO 32 TONS PER SQ. IN.

GIRDER PLATES 28-32
ALL OTHER PLATES 26-30
ALL RIVET HOLES DRILLED IN PLACE.

OUTSIDE BUTT STRAPS = 1 1/8" THICK
INSIDE = 1 1/8"

ALL RIVET HOLES 1 1/2" DIA.

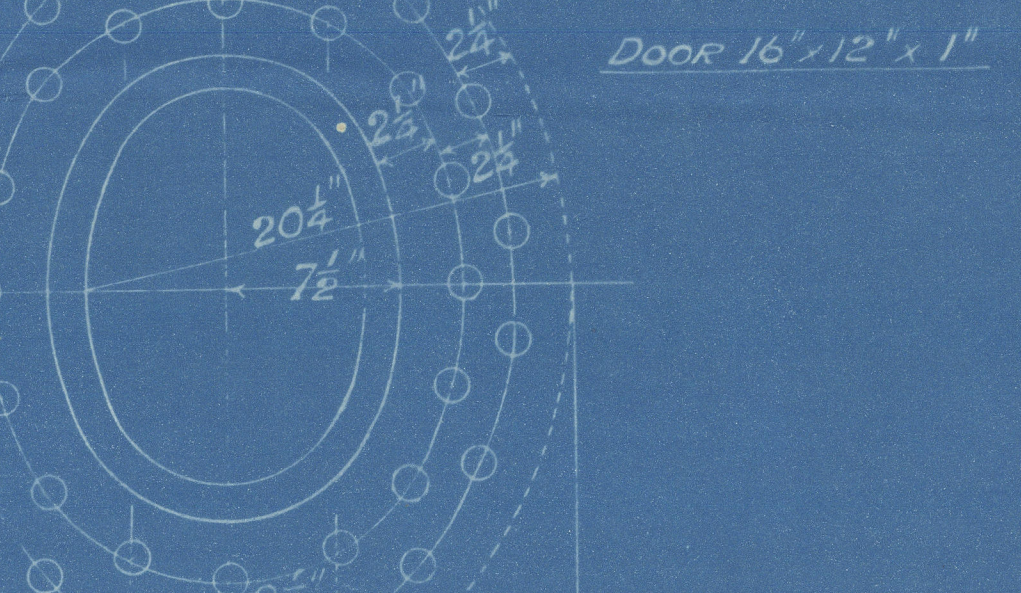
ALL RIVET HOLES 1 1/2" DIA.

ALL RIVET HOLES 1 1/2" DIA.

ALL RIVET HOLES 1 1/2" DIA.

ALL RIVET HOLES 1 1/2" DIA.

BRITISH CORPORATION
PLATE 7/8 = 10.5-15 = 85.7%
RIVET 7/8 = 5 x 1 7/8 x 23 x 1 7/8 = 88.4%
WP = 20.4 (23.5-1) 85.7 = 202 LBS



TENSILE STRENGTH OF SHELL PLATES & BUTT STRAPS 28 TO 32 TONS PER SQ. IN.

GIRDER PLATES 28-32
ALL OTHER PLATES 26-30
ALL RIVET HOLES DRILLED IN PLACE.

OUTSIDE BUTT STRAPS = 1 1/8" THICK
INSIDE = 1 1/8"

ALL RIVET HOLES 1 1/2" DIA.

ALL RIVET HOLES 1 1/2" DIA.

ALL RIVET HOLES 1 1/2" DIA.

ALL RIVET HOLES 1 1/2" DIA.

ALL RIVET HOLES 1 1/2" DIA.

MAIN BOILERS.
450 FT. STANDARD VESSEL.
"G" CLASS.
16'-3" MEAN DIA. x 20'-6" LONG x 200 LBS W.P.
TO PASS "LOYDS" SURVEY
SCALE 1" = 1 FT.

Belfast
Harland & Wolff L^o
Builder plan

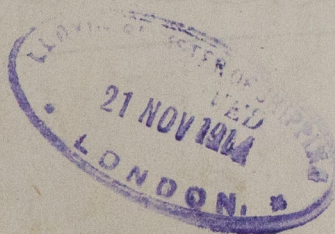
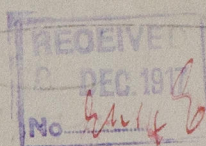
Standard C Vessel

~~No 570-1-2-2-4-5-6-7~~
~~-8-9-10-11-12~~

L.S.S. "War Icarus" ✓

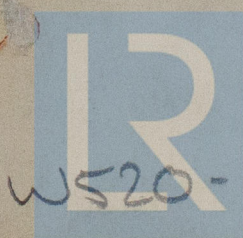
L.S.S. "War Paris" "OT18A" No 298

L.S.S. "War Priam" "Bardic"



RETAIN

RETAIN



© 2020

W520-0280

Lloyd's Register
Foundation