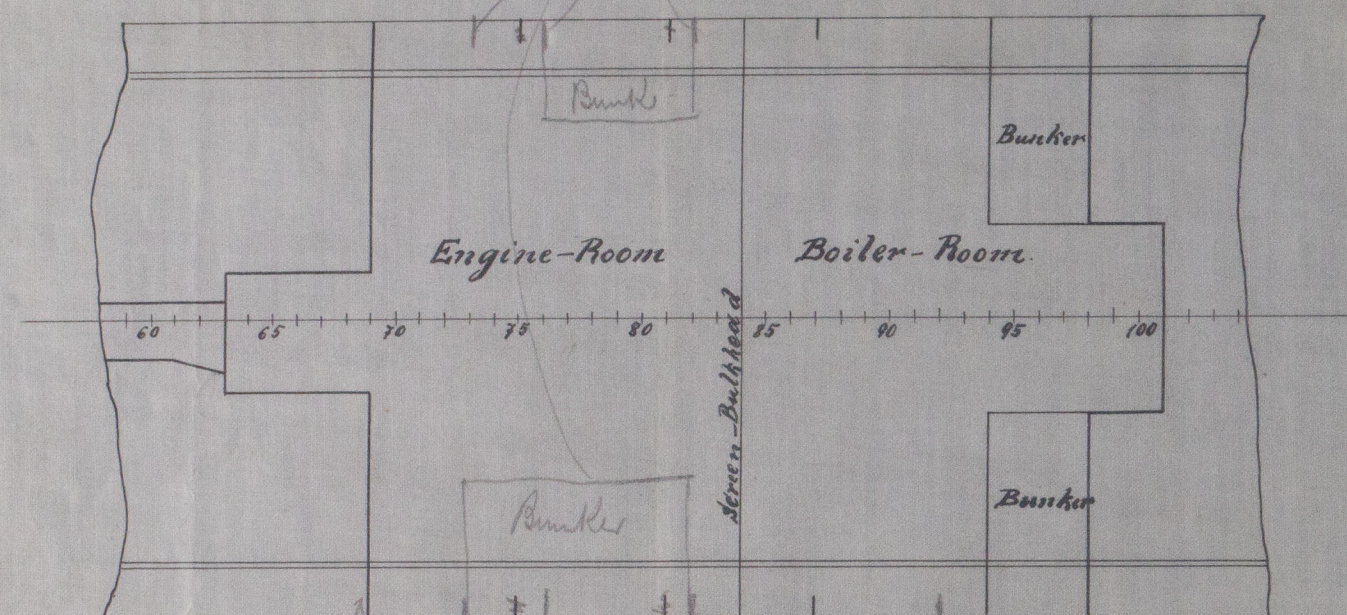


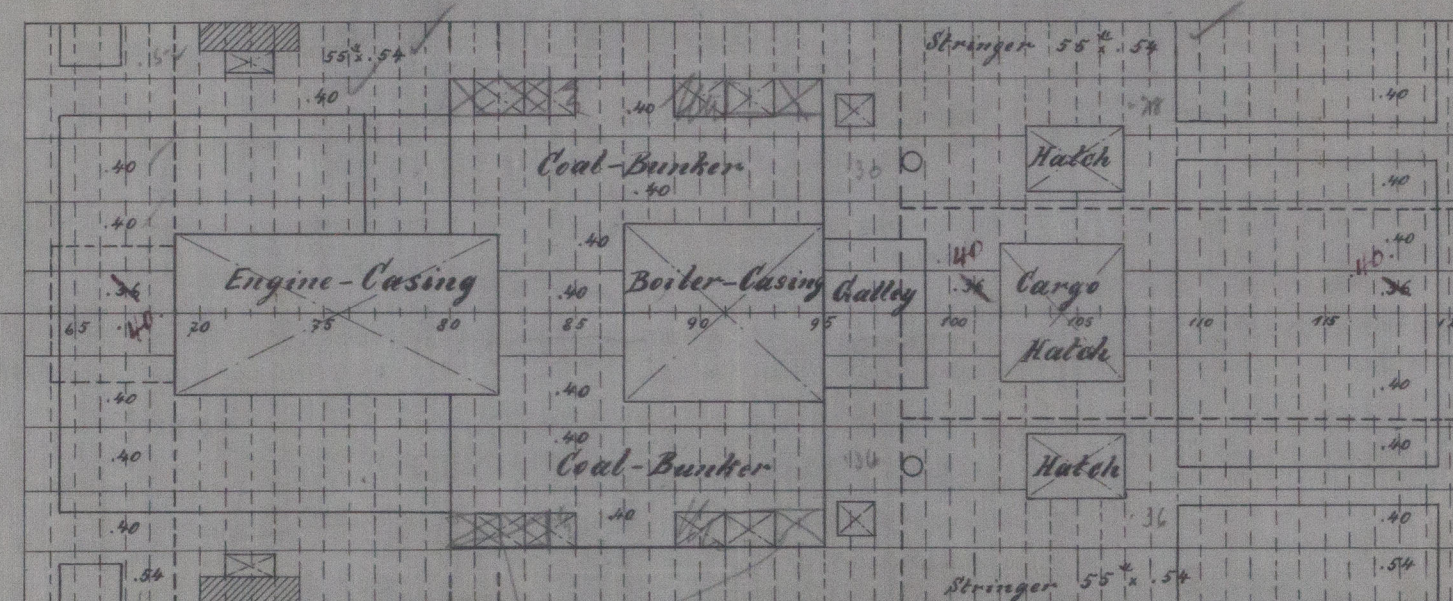
Arrangement of Steeldecks, Webframes & Bulkheads.

Scale 1:200

Double-Bottom



Bridge deck



*All corner's of Hatches & Casing to be strengthened
with Doubling-Plates as per Rule.
Hatch-Weds as per Rule.*

Upper deck

Upperdeck
Strips increased or doubled at ends of bridge

2nd Deck

$$\frac{3}{4}L$$
$$\frac{2}{3}L$$
$$\frac{3}{5}L$$
$$\frac{1}{2} | L$$

mev

5

5

✓

 $\frac{1}{2} |$

L

$\frac{1}{L}$

$$\frac{3}{4}$$

No. 37688.

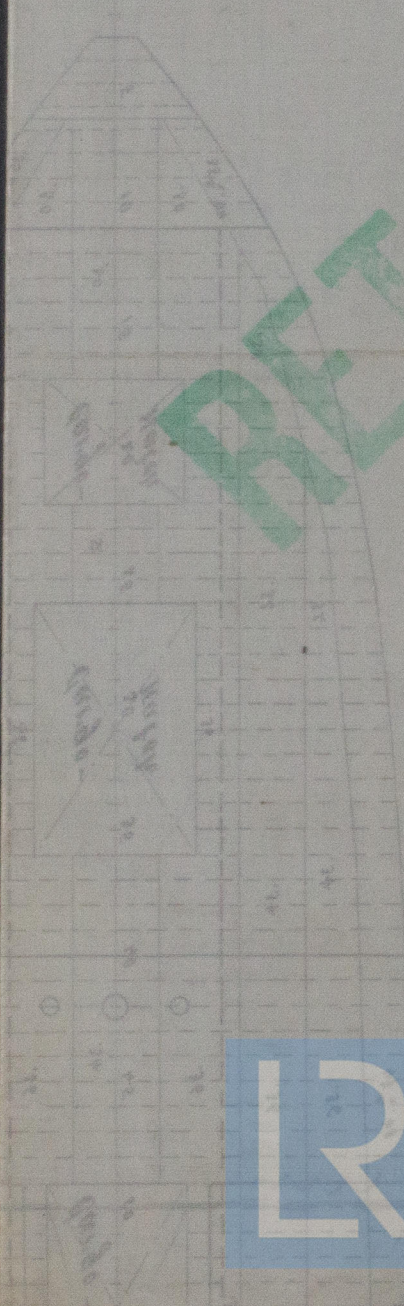
9 Feb 12.

1. 1992

WS 20-2019
Foundation

W520-0074

Deck Plans



$$\frac{10}{12}$$

$$\frac{10}{12}$$

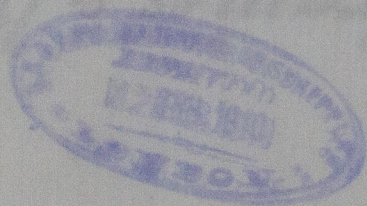
$$\frac{10}{12}$$

$$\frac{10}{12}$$



© 2020

Lloyd's Register
Foundation



S.S. 238.

Scale 1:200

Arrangement of Steel decks, Webframes &c. 2500



© 2020

Lloyd's Register
Foundation