

24/2/10 Steel-Boiler for ship 238.

Heating surface — 2108 square feet.
 Grate — 50,5 "
 Working pressure — 213 lbs. per sq. inch.
 Hydraul. — 285 "

John E. Tecklenborg & Co.

to be classed 100 R1 Steel.

Bremenhaven - Geestemünde.

36: 331-32-33.

1:10.

Main Boiler

Material: Siemens Martin-Steel.

Shell plating and girders tensile strength of 27,2-33 tons per sq. inch.

Elongation 22,5 per cent.

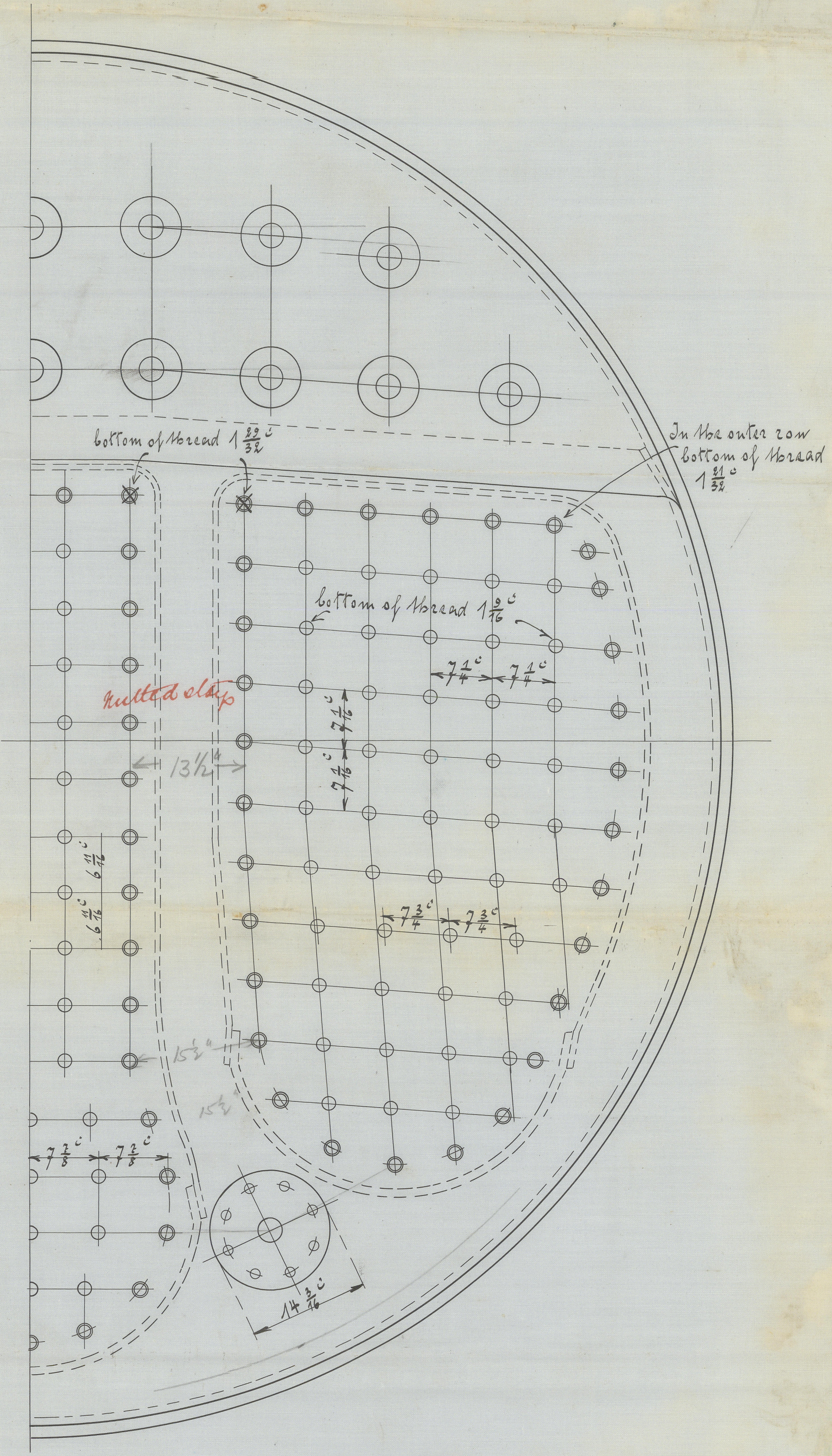
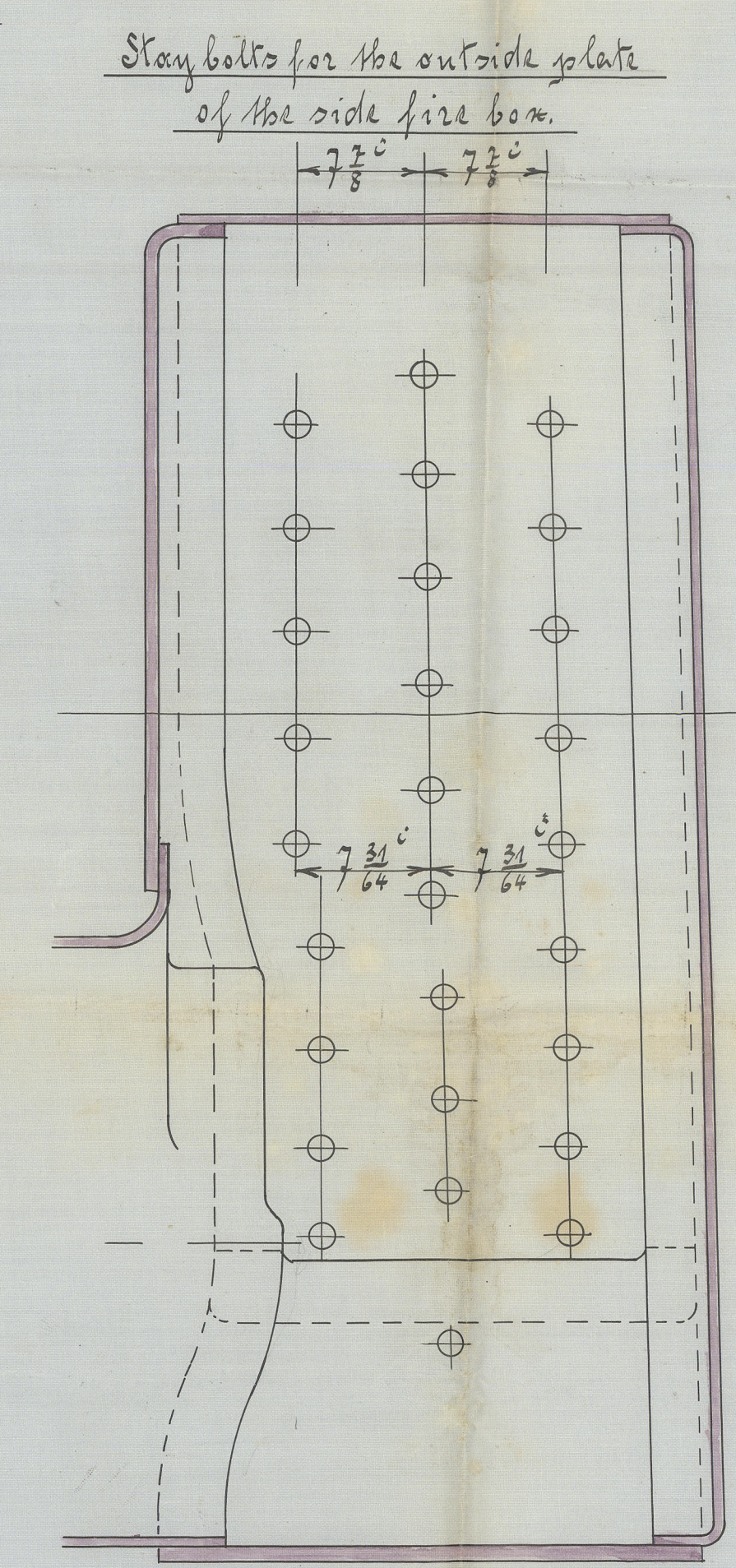
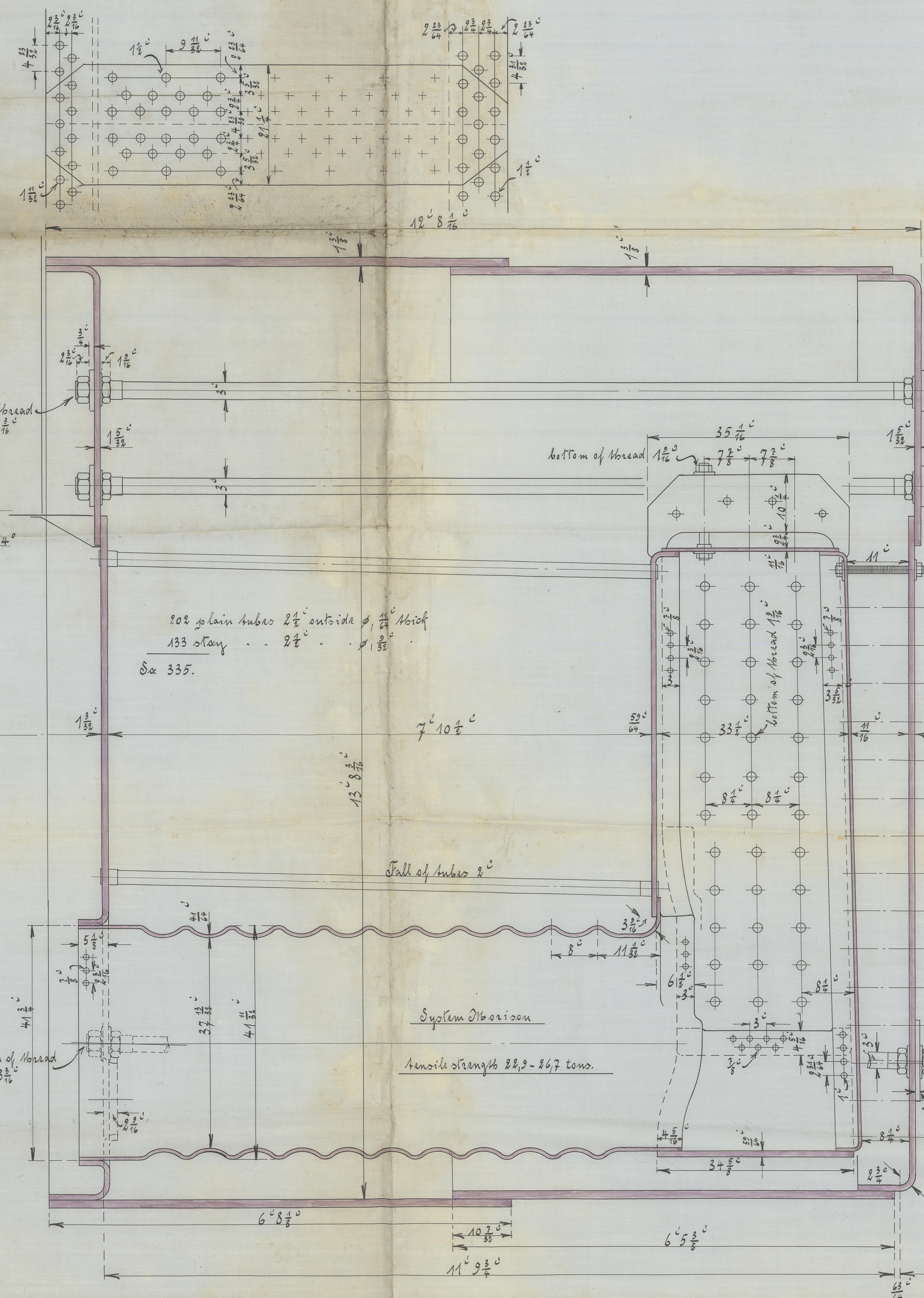
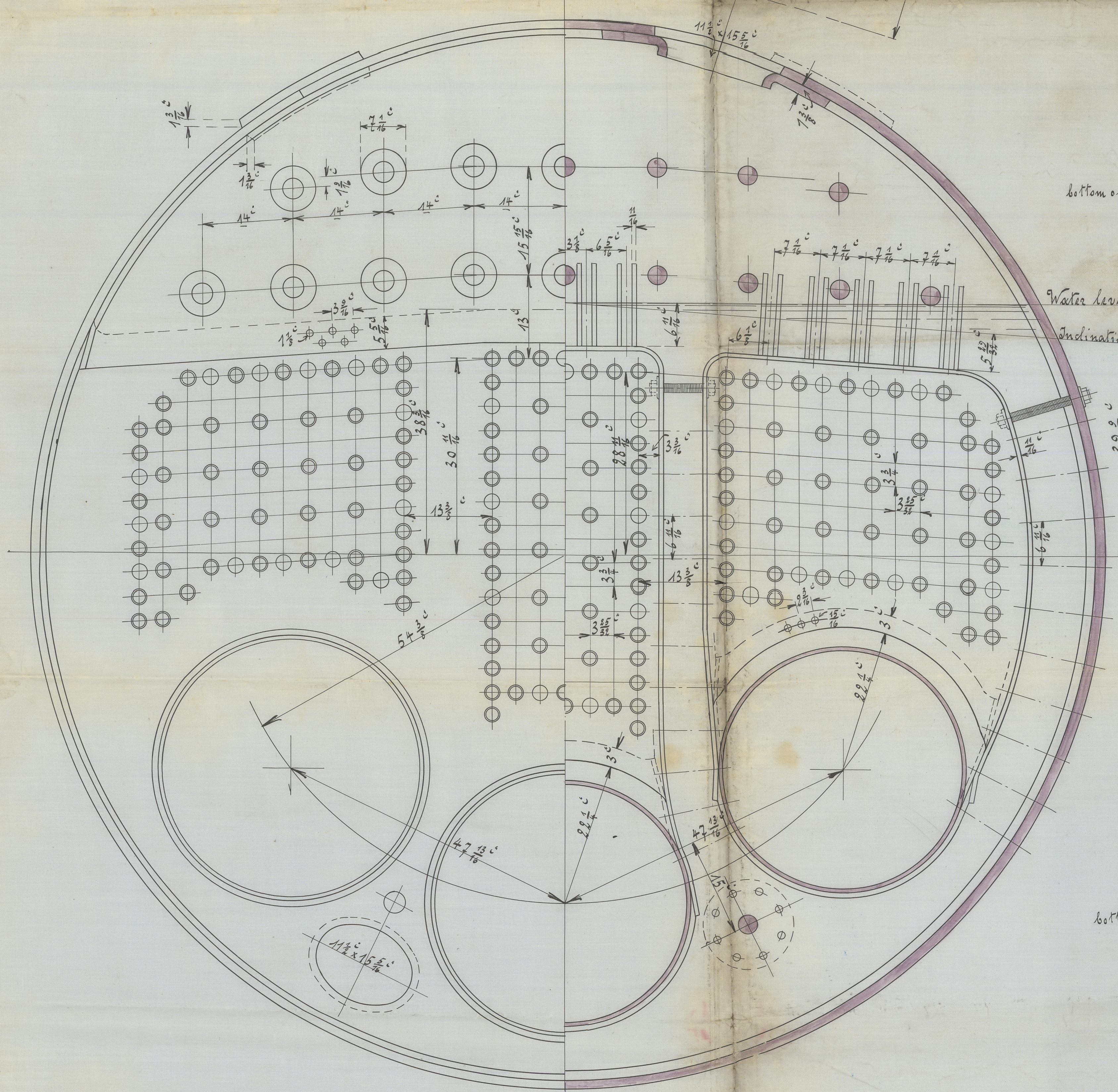
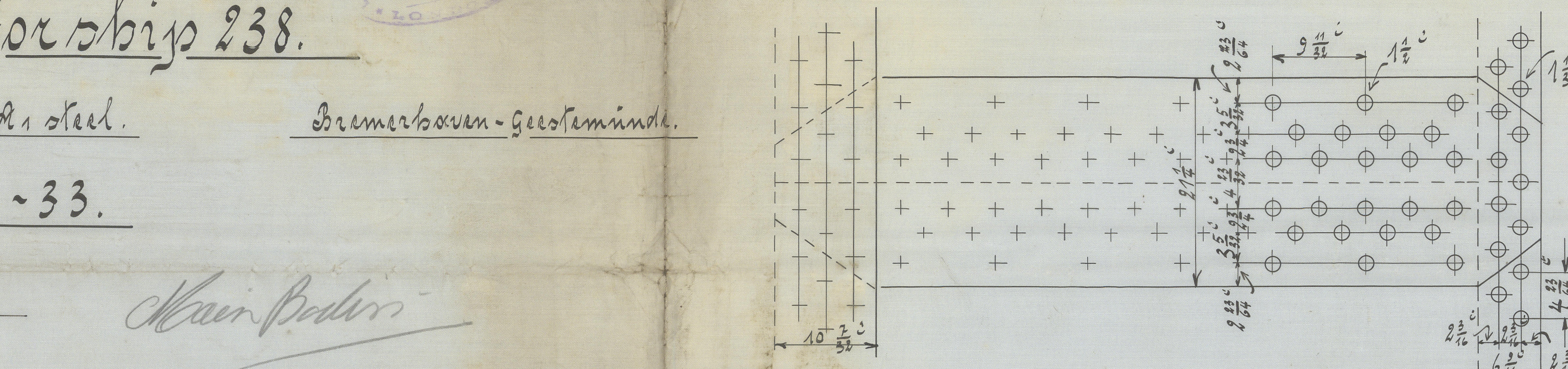
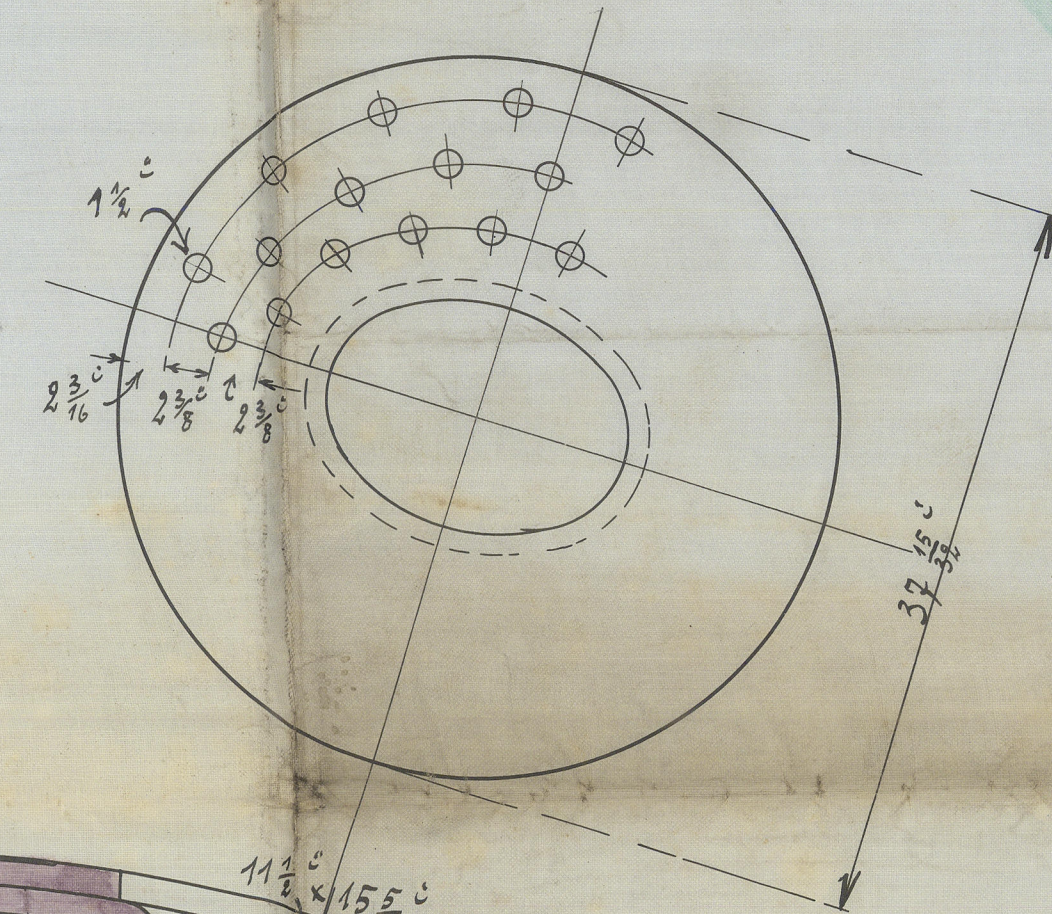
All the other material 22,2-26,7 tons per sq. inch tensile strength.

Elongation 26 per cent.

All stay bolts with nuts and washers, material Teinforstein.

tensile strength 25,4-28,6 tons per sq. inch.

$$\text{Thickness of shell plate: } T = \frac{213 \times 166 + 2}{22 \times 84,1} = 19,1 + 2 = \frac{21,1}{16} = 1\frac{5}{16} "$$



J.P. 36
 24.2.10

J.P.
 24.2.10