

S.S. "MELMAY"

MIDSHIP - SECTION

TO CLASS-100A1 (WITH FREEBOARD) COMPLETE SUPERSTRUCTURE
VESSEL WITH TONNAGE OPENING.

$$\begin{aligned} \text{L/D TO UPPER DK.} &= \frac{420}{36.25} = 11.586 \\ \text{L/D TO BRIDGE DK.} &= \frac{420}{44.2} = 9.52 \end{aligned}$$

BILGE RADIUS 3'-6"
RISE OF FLOOR 4"
BILGE KEEL 9"x44 BULB PLATE
ON 6"x4 x .50 TEE BAR.

FERROES.
MAIN FES. N° 210LD 12.3% X .59 (PERMISSION OF H. T. SHOWN "PAPER")
MAIN FES. 12.3% X .59 B.A. SPACED 30" APART FTD. TO 2" DIA.
MAIN FES. 12.3% X .59 B.D. IN BULGE SPACES. (2 X 3 1/2" X .60 B.A.
AT COMPRESSED NATIN END BEAMS.)
UPPER FES. 7. 3 1/2" X 33 B.A. EXTENDING TO UPPER BRIDGE DECKS
INTERMITTENTLY INSIDE BRIDGE, & AT BRIDGE DIA. FOR
4" SPACES FROM EACH END ON EVERY FRAME.
UPPER FES. 7. 3 1/2" X 33 B.A. EXTENDING TO UPPER OR, ON EITHER
DECK, BE SPACES 120", & AT OF BRIDGE ENDS, AND ON
INTERMEDIATE FES. F.D. OF 3" LENGTH AT DIA. SET OF
1/2" LENGTHS EXTENDING. 7.3 1/2" X 39 IN WAY OF COMPRESSORS
DOWN FES. 7. 3 1/2" X 33 B.A. EXTENDING THAT FLAT SPACED 30" APART
UPPER FES. AT ENDS EXT. TO UPPER OR, ON EITHER DECK, AND
TO FORWARD FORECASTLE DECKS ON OUT. FES. INTERMEDIATE
FERROES IN PAID 3 1/2" X 3 1/2" X .59 (NO BOTTOM CONNECTION)
INTERMEDIATE FRAMES IN FILE 4. 3 1/2" X 30 B.A. BOLT BRIDGE
TO UPPER FERROES BELOW.
MAIN FES. F.D. OF 3" LENGTH 1" DIA. END. 10.3% X .59 B.A.
SPACED 27" APART. MAIN FES. REINFORCED IN
CONJUNCTION WITH SIDE SPACERS F.D. OF 50. 12.5
X 50 ENDS 12.3% X .59 A. WITH 7. 3 1/2" X 30 B.A. REINFORCE
FRAMING 14 1/2" GIDDED. - UPPER FES. F.D. OF
3" LENGTH 7.3 1/2" X 35 B.A. - UPPER FES. AT NATIN END
BEAMS CUTTED WITH 4 X 4 X 42 REIN. BOLT WITH 2" DIA.
PLATE CUTTER TO CEMENT BAR AT END END.

SECTION IN WAY OF ENGINE ROOM.
No. 01L FUEL UNDER E.&B.

SECTION THRO. HOLD.

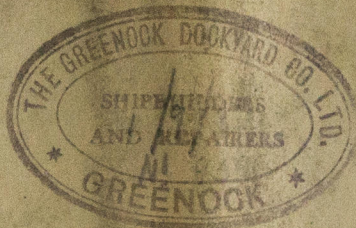
YARD N° 419

YARD No. 419.

The Great Dock Co.
"Lagosian"
P. S. MELMAY.

N. 419.

Ship's Sect.
as Built.



Genl. I. E. Rept. N. 19233.

WS2-0067



© 2021

Lloyd's Register
Foundation