

⁹
Invescarrie

GLASGOW REPORT No. 42764

SHAFTING

RETAIN

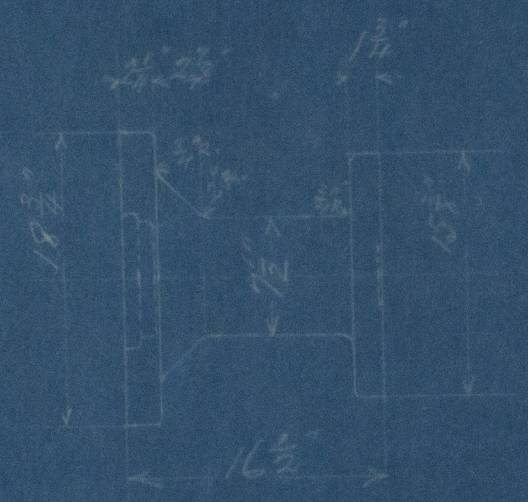
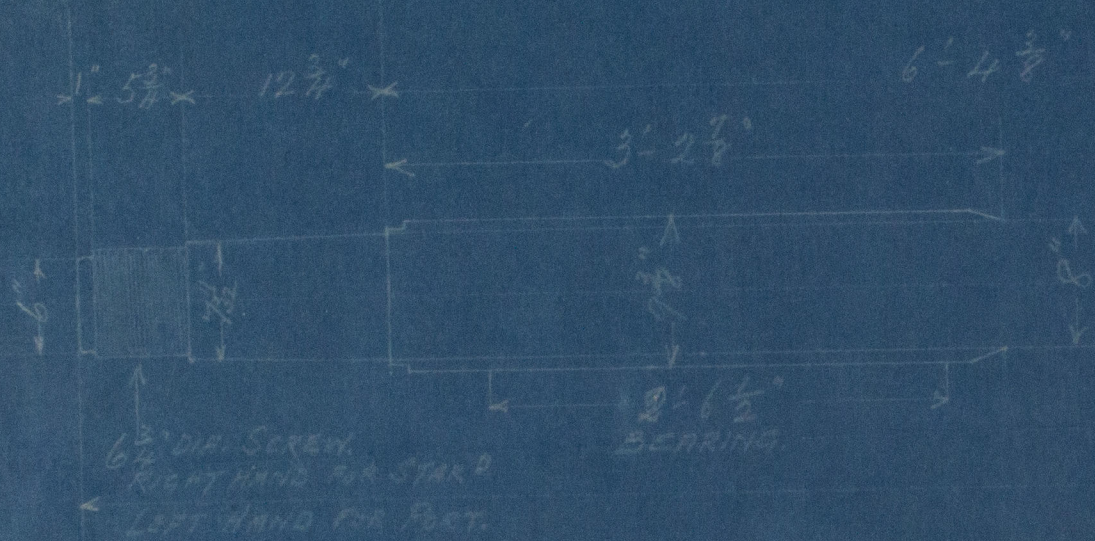
W518-0059



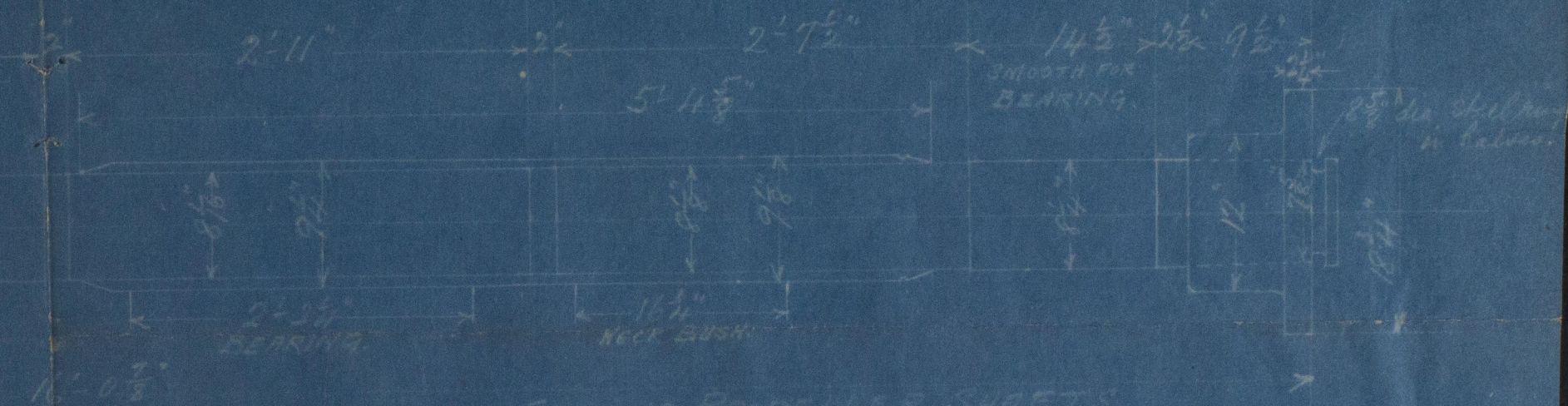
© 2019

Lloyd's Register
Foundation

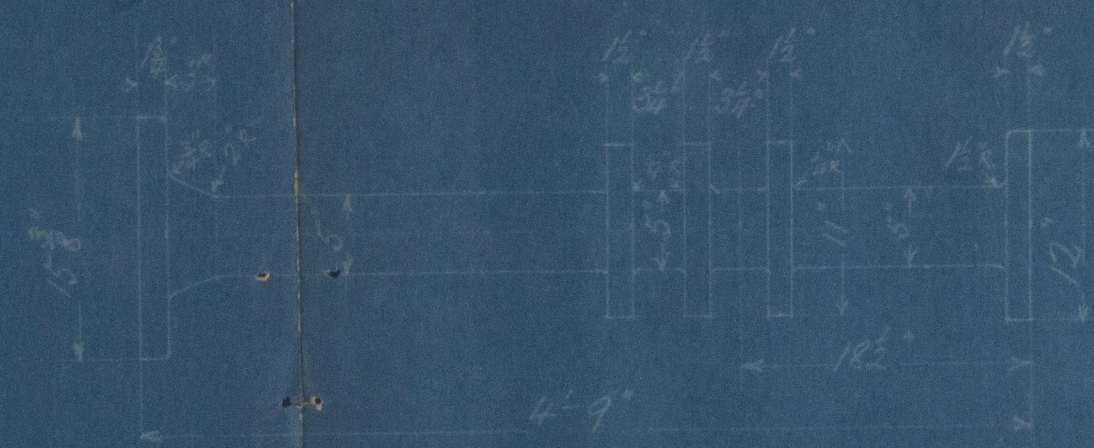
8422.



EXISTING MAKE UP LENGTH
TWO OFF

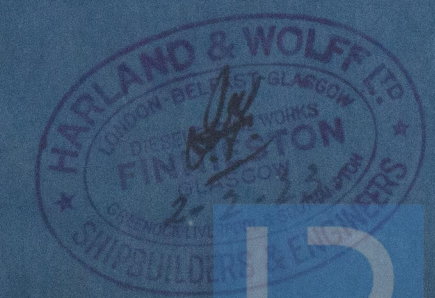


EXISTING PROPELLER SHAFTS
TWO OFF



NEW THRUST SHAFT
TWO OFF

T.S.S. INVERCORRIE
REPAIR JOB N° 243
SHAFTING
SCALE 1" = 1 FOOT.



© 2019 Lloyd's Register Foundation

WS8 - 0059