

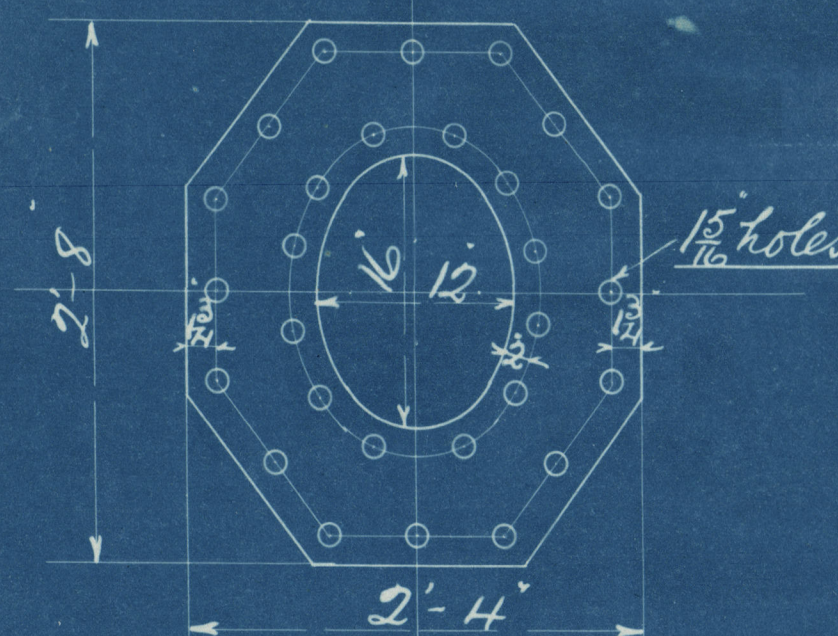
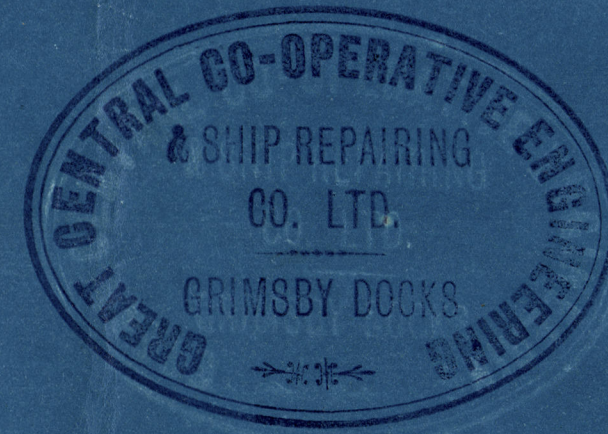
# STEEL BOILER 200 LBS WP N<sup>o</sup> ~~ASO~~ TO LLOYDS ASI

JUNE 18<sup>th</sup> 1915

7/2/16

## Heating Surface

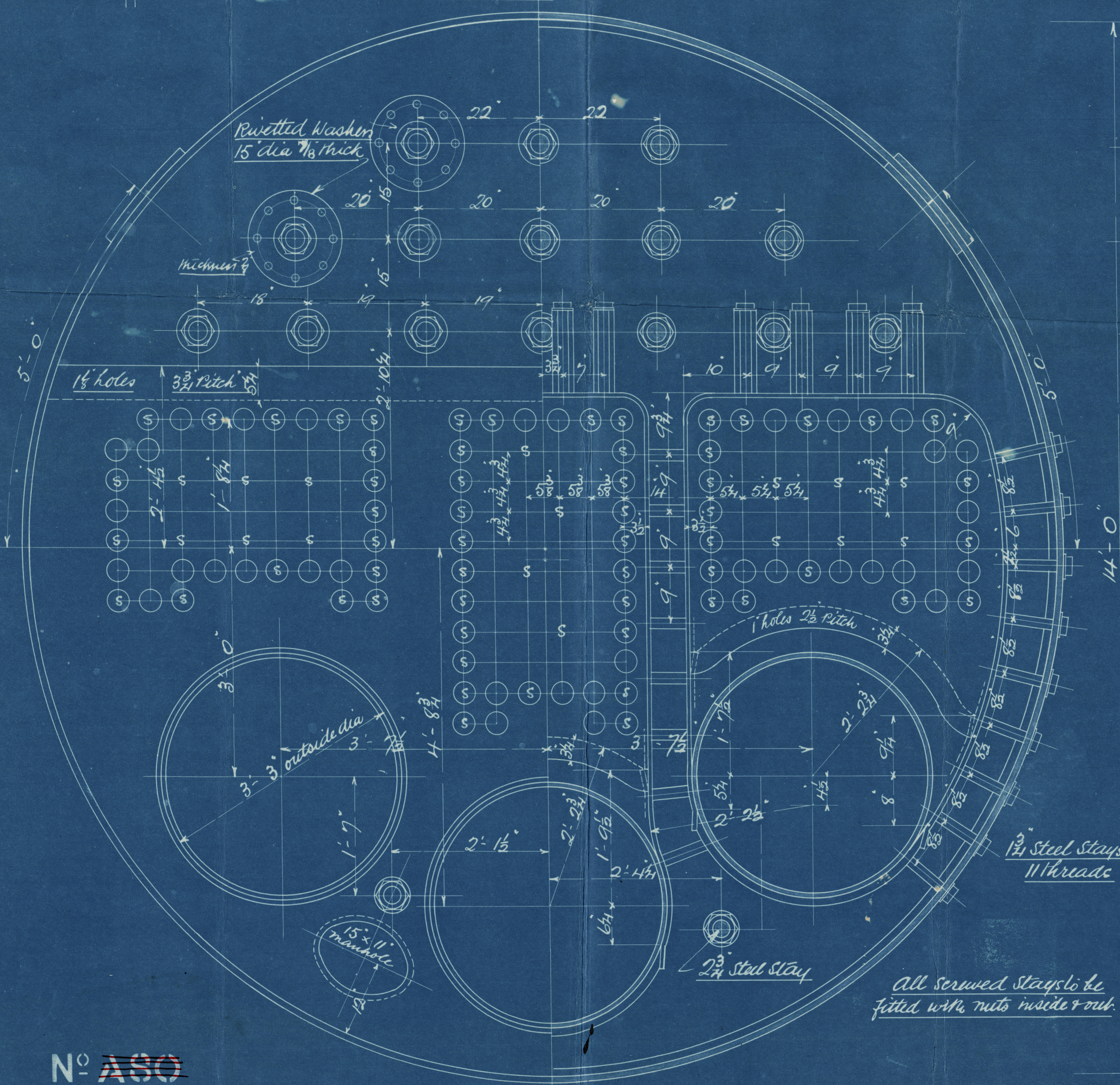
Tubes	1045 Sq feet
Furnaces	97 "
Combustion Chambers	195 "
Tube Plates	8834. "
Total Heating Surface	14043.71. "
Grate area 4'-6" Bars	42.75 " "



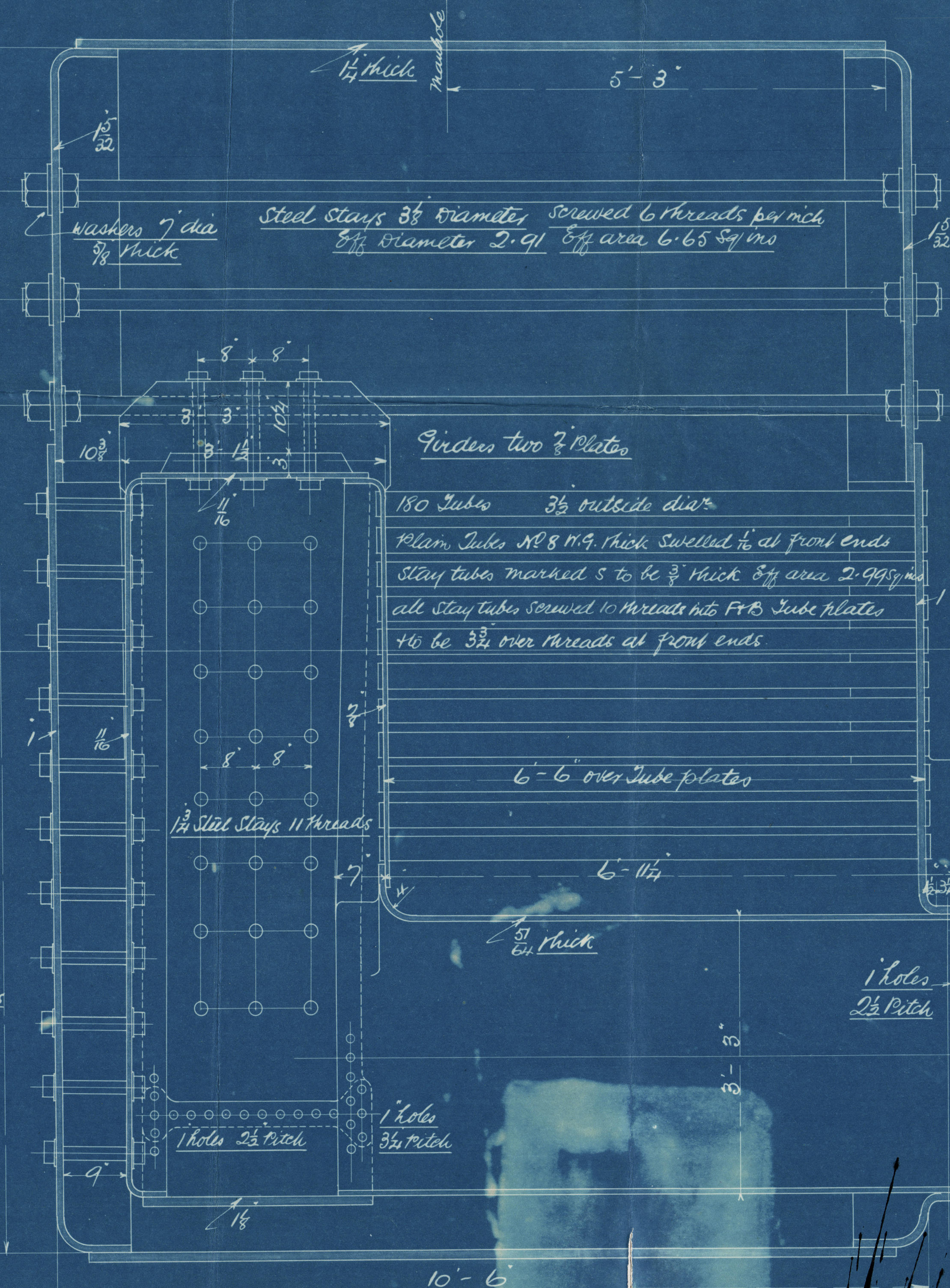
Manhole Doubling Plate 1 1/2" thick

Double Butt Straps  
inside & outside 1 1/4" thick  
85% Plate } N.P. 200.3 lbs  
90% Rivet }

Steel plates & rivets. all holes drilled in place  
after bending. Shell plates 28 to 32 Tons Tensile  
End plates, Combustion Chamber plates & rivets  
26 to 30 Tons Tensile



All screwed stays to be  
fitted with nuts inside & out.



N<sup>o</sup> ~~ASO~~  
ASI

Paul  
4.2.16  
CMs  
22/16



WS16-0179

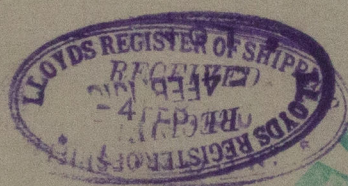


Boiler N<sup>o</sup> A81

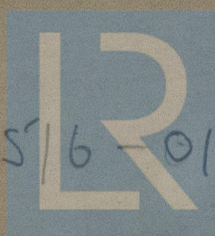
The D. Central Co. op. Eng.  
CR. CL<sup>d</sup> GRIMSBY.

S. T. Wyndham  
Gms report N<sup>o</sup> 10.321

---



RECEIVED



© 2019

WS/6-0179 Lloyd's Register  
Foundation