

MIDSHIP SECTION.

S. S. N° 231.

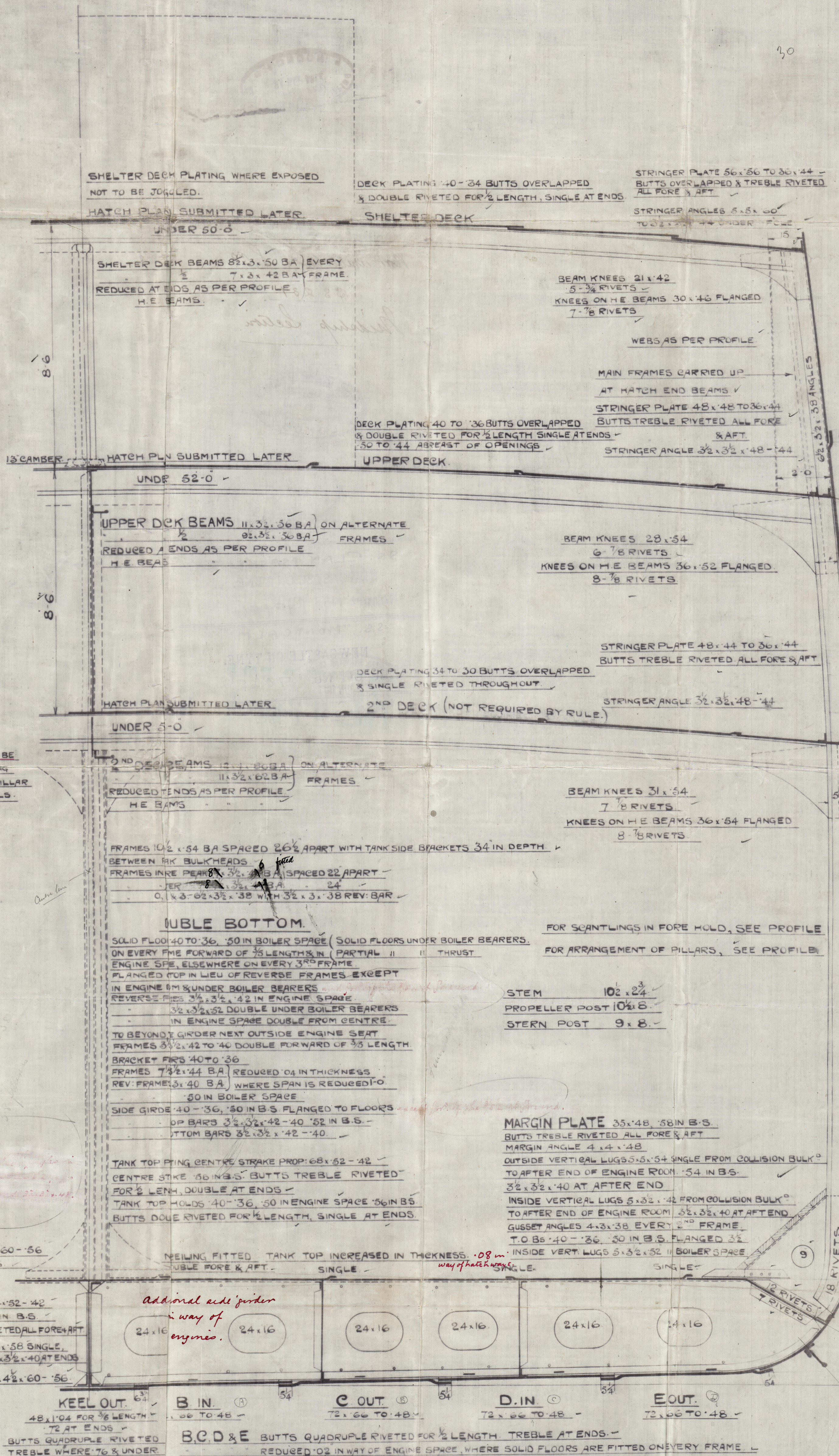
SCALE $\frac{1}{2}$ " = 1 FOOT.

BUILDERS DIMENSIONS LENGTH B.P. 420'0" BREADTH EXTREME 53'6" DEPTH M.D. 30'6"

LLOYD'S DIMENSIONS LENGTH 419'42" BREADTH M.D. 53'16" DEPTH M.D. 30'5"

NUMERALS	
BREADTH M.D.	53'16"
DEPTH M.D.	30'5"
TWEEN DECKS	5
TRANSVERSE NUMBER	54
LENGTH B.P.	419'42"
LONGITUDINAL NUMBER	35298
ERECTORS	2705
CASINGS ETC.	461
EQUIPMENT NUMBER	35424
LENGTH-DEPTH TO SHELTER DEK	10'76"
D	18'0"
DUE TO INCREASED DEPTH OF T.O.B'S.	

EQUIPMENT.	
2 BOWER ANCHORS STOCKLESS	65 CWT'S EACH
1 STREAM	EX. STOCK
1 KEDGE	19
270 FATHOMS	25% STUD CHAIN CABLE
90	5% STEEL WIRE
120	5% TOWLINE
90	5% HAWSER
2 AT 90	24



M. IN.
RULE 47 TO PROPOSED 88" x 70" x 46"
BUTTS OVERLAPPED & QUADRUPLE RIVETED
TREBLE WHERE 68" & UNDER

L. OUT.
3" x 66" TO 48" 46" IN PEAKS
BUTTS OVERLAPPED & QUADRUPLE RIVETED
FOR 1/2 LENGTH TREBLE AT ENDS

K. IN.
7" x 66" TO 48" 46" IN PEAKS
BUTTS TREBLE RIVETED ALL FORE & AFT
QUADRUPLE IF EXCEEDING RULE WIDTH.

J. OUT.
2" x 66" x 48" 46" IN PEAKS
BUTTS TREBLE RIVETED ALL FORE & AFT

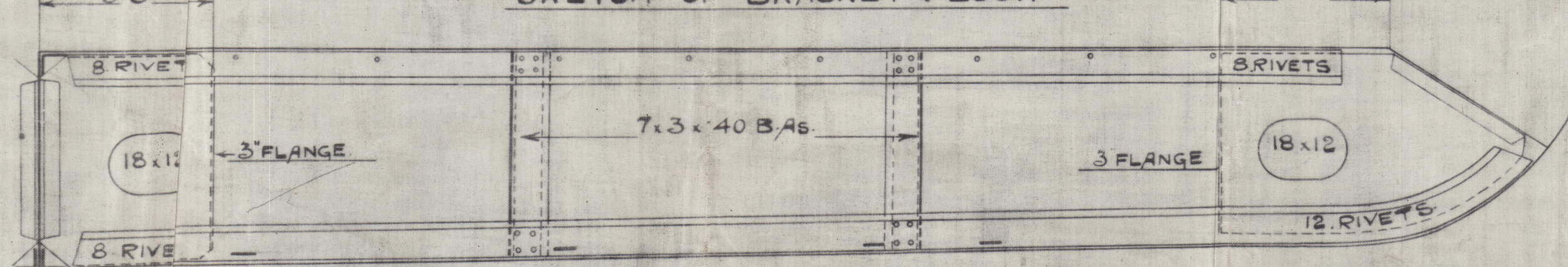
H. IN.
7" x 66" TO 48" 46" IN PEAKS
BUTTS TREBLE ALL FORE & AFT

G. OUT.
72" x 66" TO 48" 46" IN PEAKS
BUTTS TREBLE RIVETED ALL FORE & AFT

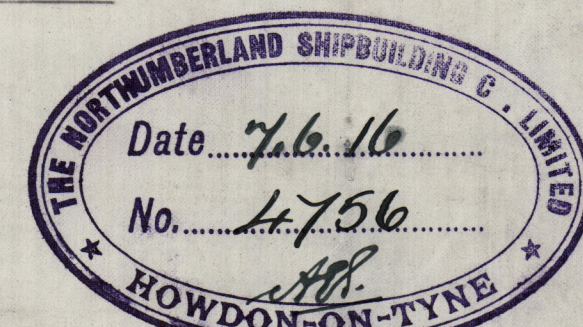
F. IN.
59" x 66" TO 48"
BUTTS QUADRUPLE RIVETED FOR 1/2
LENGTH TREBLE AT ENDS

IF BRACKETS ARE MADE
RULE HEIGHT = 26, THEN
FRAMES TO BE 10" x 32" x 56"

SKETCH OF BRACKET FLOOR.



plan to be submitted
26.6.16

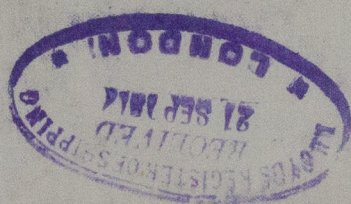


16
26.6.16

© 2019

Lloyd's Register Foundation

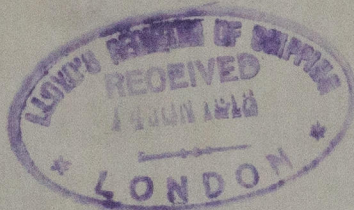
WSIS-0049



Northumberland S. Co

SS 231

Midship Section



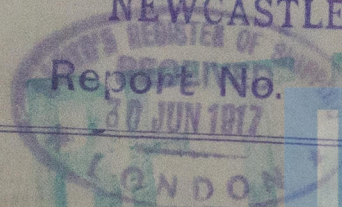
SS. "CLAN MACKENZIE"
NEWCASTLE ON TYNE.

Report No. 70004

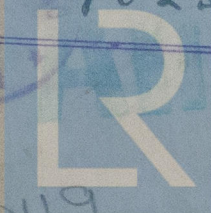
S.S. "MONTCALM"

NEWCASTLE ON TYNE.

Report No. 70257



WS15-0049



© 2019
Lloyd's Register
Foundation