

# LEFT HAND HEADERS DRAWN

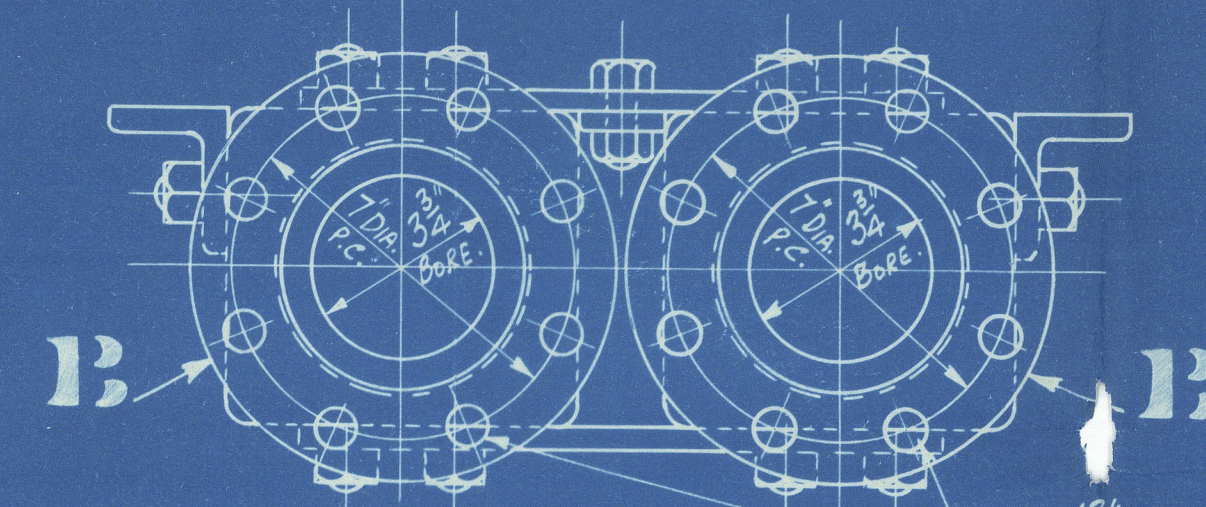
DRILLING FOR CENTRE-BOX.  
LEFT HAND HEADERS ONLY.

DRILLING FOR WING-BOX.  
R.H. & L.H. HEADERS

NOTE: DEPTH OF TAPPED HOLES IN HEADERS  
GIVEN TO POINT OF DRILL

11 THREADS PER INCH.

HEADERS 4'-3" LONG.



8-1/8" DIA. HOLES ON 7" DIA. P.C.

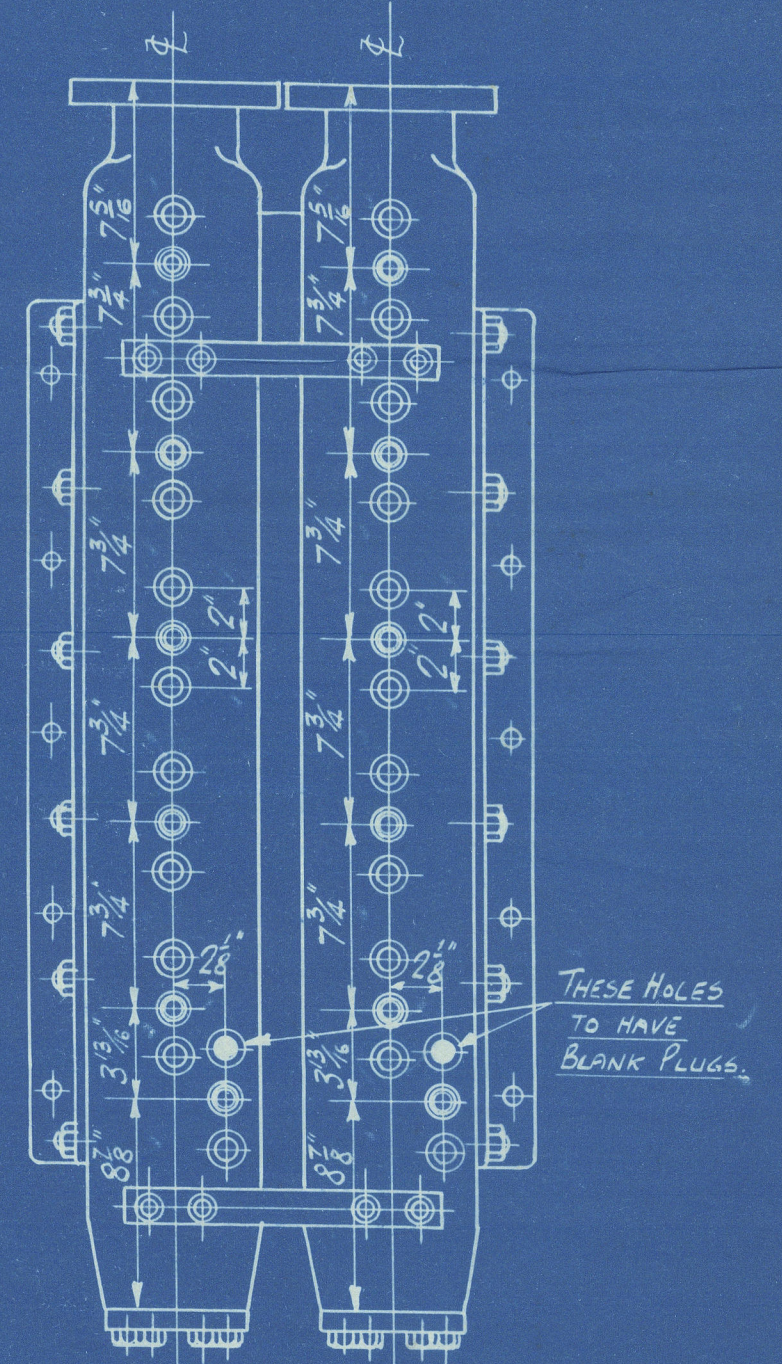
DETAIL OF ANGLE SUPPORTS.

EACH PAIR OF HEADERS TO HAVE "HAND"  
PAINTED ON (WHITE) TO DENOTE POSITION IN BOILER.  
SEE ARRANGEMENT DRG. NO. M.N. 7680.

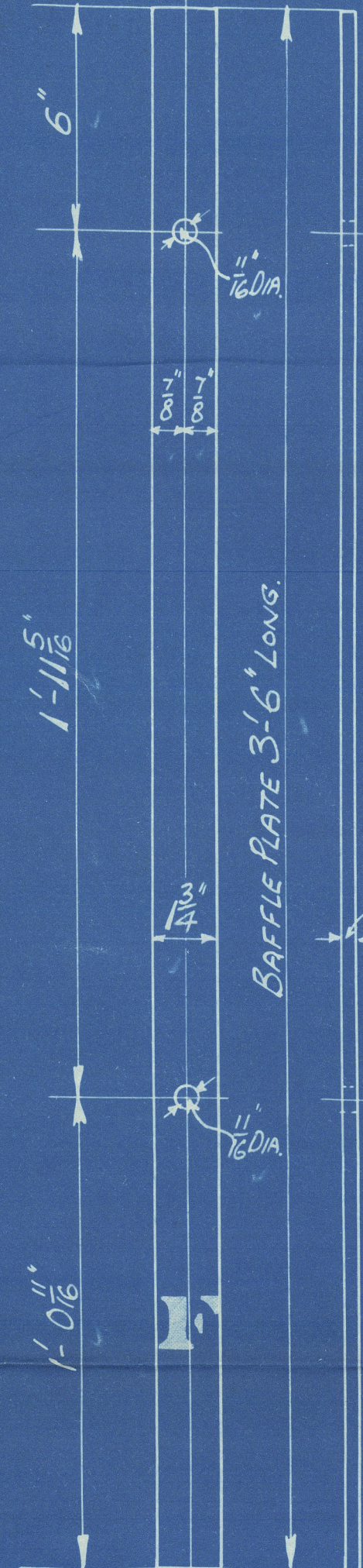
TO PASS LLOYDS SURVEY.

WORKING PRESSURE 150 LBS PER SQ. INCH.

TEST 540 " " " "

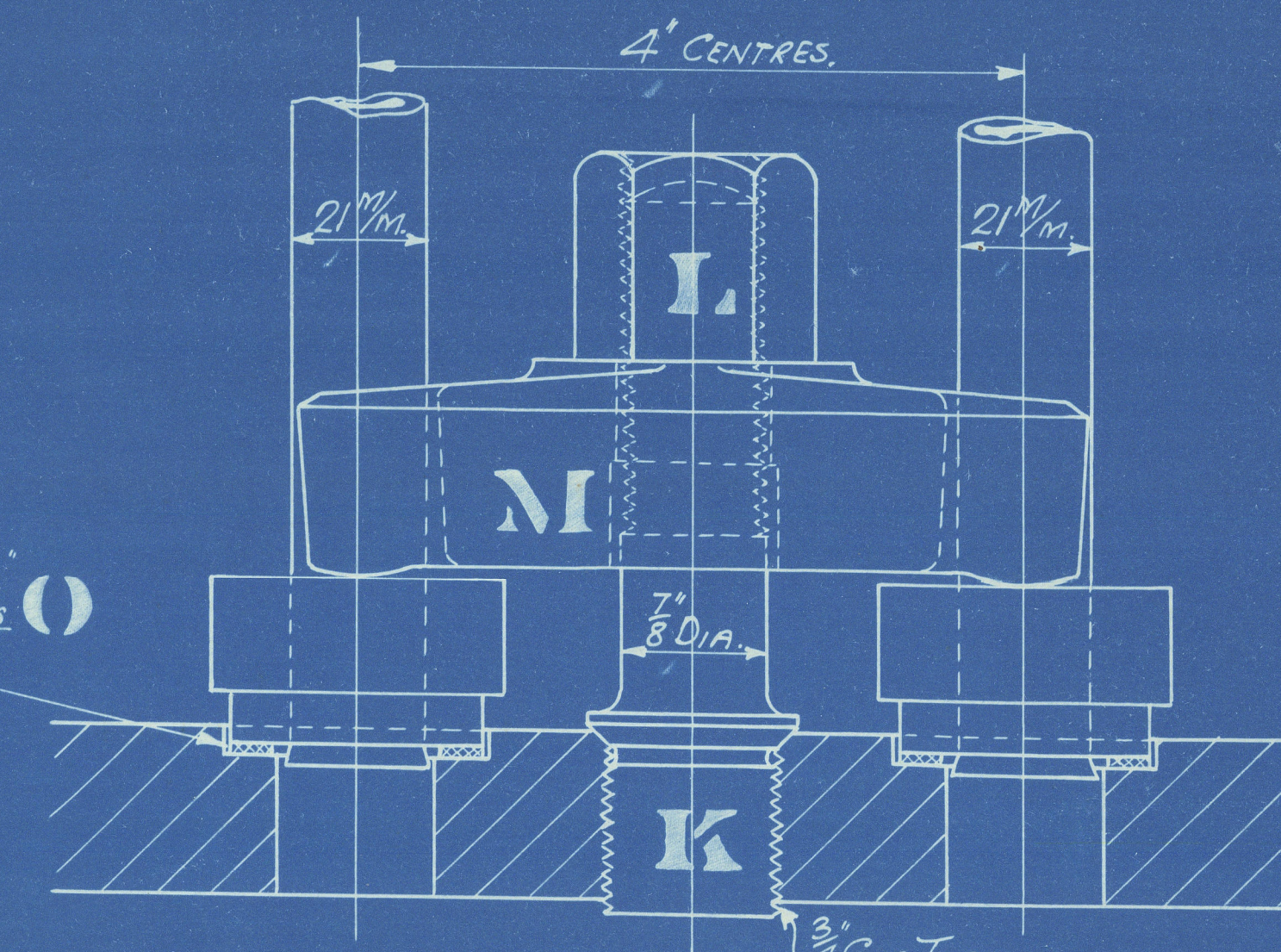


DRILLING FOR CENTRE-BOX.  
RIGHT HAND HEADERS ONLY.  
SCALE 1/2" = 1 FOOT.



MARK.	DESCRIPTION.	Nº OFF.	MATERIAL	REMARKS.
A.	HEADERS.	4.	STEEL	PAIR R.H. & 1 PAIR L.H.
B.	FLANGES.	4.	M.S.	8 3/4" DIA. x 1/2" THICK.
C.	STRAPS.	8.	STEEL.	DRG. NO. M.M. 190.
D.	BASE PLATES.	4.	M.S.	" " M.M. 203.
E.	ANGLE SUPPORTS.	4.	M.S.	2 1/2" x 3" x 3' 0" LONG.
F.	BAFFLE PLATES.	2.	STEEL.	1 3/4" x 3' 6" x 3' 6" LONG.
G.	3/4" WHIT. STUDS.	56.	M.S.	DRG. NO. M.D. 210.
H.	5/8" " BOLTS.	24.	M.S.	" " M.D. 290.
J.	3/4" " NUTS.	56.	STEEL.	" " M.E. 62.
K.	7/8" COLLAR STUDS.	76.	M.S.	" " M.D. 280A.
L.	7/8" WHIT. NUTS.	76.	STEEL.	" " M.E. 65.
M.	4" DOGS.	76.	STEEL.	" " M.C. 260.
N.	5/8" WHIT. NUTS.	4.	FORGINGS.	" " M.E. 61.
O.	JOINT RINGS.	152.	WALKERITE	" " M.F. 121.
P.	5/8" WHIT. BOLTS.	4.	BLACK STEEL	" " M.D. 291.
-	BLANK PLUGS.	4.	M.S.	" " M.D. 270.

"WALKERITE"  
JOINT RING  
1/8" THICK



DETAIL OF SUPERHEATER ELEMENT JOINT.  
FULL SIZE.

ARR.  
21/4/32.  
WDA

THE SUPERHEATER CO LTD		BUSH HOUSE LONDON W.C.2	
TITLE HEADERS		DRAWING NOS	
ORDER NOS	REF	CHKD	MA 5640
6068M	6068M	9/1/40	
JOHN DICKINSON & SONS LTD			
CONTRACT NO 253.020			
S.S. CAITHNESS			
WST4-0026			

SCALE  
3" = ONE FOOT  
DWG. TCD



J. DICKINSON, SOYCS.  
SS. "CAITHNESS"

---

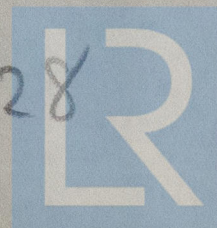
HEADERS

---

DUPLICATE

---

Ws'14-0028



© 2020

Lloyd's Register  
Foundation