

TWEEN DECK GIRDERS:-

$\frac{8.5^2 \times 49.5 \times 5}{100 \times 4}$	= 45,	} 3/4 PLATE WITH 6 RANSE ON LOWER EDGE & 5' 4" x 40 ANGLE.
$\frac{12.75 \times 49.5 \times 5}{100 \times 4}$	= 100,	
$\frac{17 \times 49.5 \times 5}{100 \times 4}$	= 179,	3/4 PLATE 6' 4" x 40 ANGLE.
$\frac{19.2 \times 49.5 \times 5}{100 \times 4}$	= 228,	3/4 PLATE 6' 4" x 30 ANGLE
$\frac{21.25 \times 49.5 \times 5}{100 \times 4}$	= 280,	40 PLATE 6' 4" x 34 ANGLE
$\frac{23.5 \times 49.5 \times 5}{100 \times 4}$	= 402,	40 PLATE 6' 3/4 x 6' 4 ANGLE
$\frac{27.62 \times 49.5 \times 5}{100 \times 4}$	= 472,	44 PLATE 6' 6" x 6' 4 ANGLE

**GIRDERS UNDER BRIDGE DECK.**

$\frac{8'6" \times 48 \times 5}{100 \times 4} =$	43.	3/4 PLATE 6'3" x 40 ANGLES 8'4'3" x 40
$\frac{21'25" \times 48 \times 5}{100 \times 4} =$	271.	40 PLATE 6'4" x 3/4 ANGLES.
$\frac{23'37" \times 48 \times 5}{100 \times 4} =$	327.	40 PLATE 6'4" x 6/4 ANGLES
$\frac{27'62" \times 48 \times 5}{100 \times 4} =$	478	44 PLATE 6'6" x 6/4 ANGLES

S. S. N<sup>o</sup> 473.

x 57-6 EXTREME x 28-9 MLO

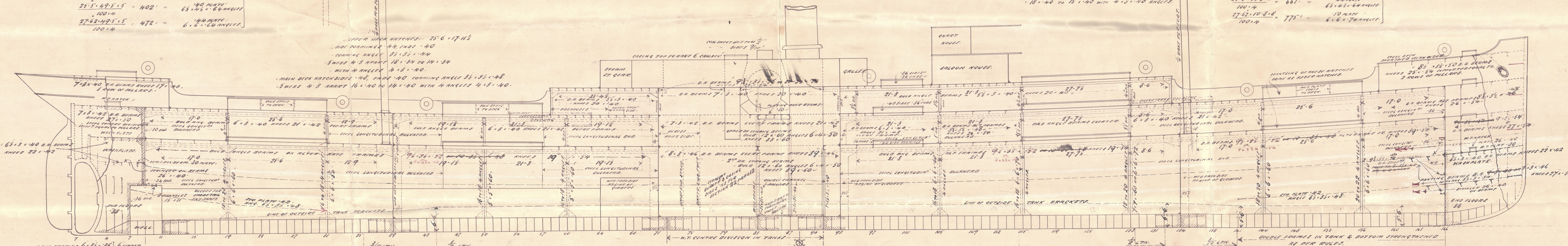
AMENDED

THE NATCH 27.75° ± 17.15° CORNINGS ANGLES  
 - BRIDGE OF, SIDE CORNINGS " 44, 33° ± 33° " 44-  
 - UPPER DE " " 46, 32° ± 32° " 44-  
 - MAIN DE " " 48, 32° ± 32° " 48-  
 - ALL THE CORNINGS " 40-  
 - BRIDGE & UPPER DE NATCH WITH 4-1/4° HIGHT  
 - 21° ± 34° TO 16° ± 34 WITH 4° ± 40 ANGLES.  
 - 2° DECK NATCH WITH 4-1/4° HIGHT  
 - 18° ± 40° TO 15° ± 40 WITH 4° ± 40 ANGLES.

HOLD GIRDER:-

$\frac{8 \cdot 5^2 \cdot 50 \cdot 8}{100 \cdot 4} = 73$	}	34 PLATE WITH 6 ANGLES
$\frac{12 \cdot 7^2 \cdot 50 \cdot 8}{100 \cdot 4} = 165$		ON LOWER EDGE
$\frac{17^2 \cdot 50 \cdot 8}{100 \cdot 4} = 294$	367	64 PLATE -
$\frac{19 \cdot 2^2 \cdot 50 \cdot 8}{100 \cdot 4} = 375$		6 " 4 " 40 ANGLES.
$\frac{21 \cdot 2^2 \cdot 50 \cdot 8}{100 \cdot 4} = 459$		40 PLATE -
$\frac{25 \cdot 2^2 \cdot 50 \cdot 8}{100 \cdot 4} = 661$		6 " 4 " 44 ANGLES.
$\frac{27 \cdot 62 \cdot 50 \cdot 8}{100 \cdot 4} = 775$		44 PLATE -
		6 " 4 " 54 ANGLES.
		44 PLATE -
		6 " 4 " 64 ANGLES.
		50 PLATE -
		6 " 6 " 74 ANGLES.

Two examples of the letter 'T' are shown, each with the text "10 BEAMS" written next to it. The first 'T' is a simple, bold, black letter. The second 'T' is a more complex, stylized version of the letter, also in black.



ANG. FRAMES  $6 \times 3\frac{1}{2} \times 36$  6 SPACED  
 35' APART  
 REVERSE "  $3 \times 3\frac{1}{2} \times 36$  100' & 200'  
 OR BULB ANG.  $7 \times 3\frac{1}{2} \times 42$   
 SPACED 24' APART.

---

BULB ANGLE FRAMES  $9 \times 3\frac{1}{2} \times 56$   
 FRAMES SPACED 25' APART.

BULKHEAD N<sup>o</sup> 9. NUMERALS:- 28 TO 30.  
'36 IN HOLD TO '30 IN TWEEN DECK.  
5' 5" x 32 TO SHELL, 4 x 4" '36 TO DECK.  
VERTICAL STIFFERS IN HOLD & TWEEN DECKS.  
APART 8' x 3' x 42. KNEE TOP & BOTTOM  
BULBANGLES.

• BULKHEAD N° 39  
• NUMERALS = 26 TO 28" & 19-20  
• PARTING "36 IN HOLES TO "30 IN  
• 8" x "50 TO SHELL & TANK TOP 3" x 3" x "36 TO DECK.  
• 9" x 3" x "36 S.A. STICKS. 2-6 APART WITH ANGLES  
• TO TANK TOP & 6" x 3" x "40 LUGS TO DECK.  
• THREE DEck STICKS 3" x 3" x "40 OR H PLATES 2-6 APART

- BULKHEADS: N<sup>o</sup>s 71 & 93
- NUMERALS = 26 to 28 & 18 to 19.
- PARTING 3/4 INCHES TO 3/8 IN THIN END.
- 5' 5" x 30 TO SHELL & TANK TOP, 3 1/2' x 3 1/2' x 36 TO DECK.
- 9 1/2' x 33' x 30 B.P. STIFF 2' 6 APART WITH KNEES
- TO TANK TOP & 6' 3" 3/4 LUGS TO DECK.
- THEN ON STIFFENERS 3 1/2' x 3' x 30 ANGLES OR 4" FLANGES 2' 6 APART.

. NO. 134 BULKHEAD.  
 . NUMBERS: 28 TO 30 & 20 TO 21.  
 . BIRTING .56 IN HOLD TO .50 IN TWEEN DEK.  
 . 5' 5" x .52 TO SHELL & TANK TOP. 4' 4" x .56 TO DECK.  
 . 10' 3 1/2" x .54 B. STIFFENERS 2.6" APART WITH KNEES  
 . TO TANK TOP & 6' 3" x .50 LUGS TO DECK.  
 . TWEEN DEK STIFFENERS 3 1/2" x 3" x .50 1.6" APART.

BUILD ANGLE FRAMES -  
 $7 \times 3\frac{1}{2} \times 4.2$   
 FRAMES SPACED  $2\frac{1}{2}$  APART  
 SPACED  $2\frac{1}{2}$  APART  
 N°166  
 BULKHEAD:- NUMERALS 32 TO 34 & 16 TO 17  
 - 40 IN HOLD, TO .36 IN LOWER TWEENDECK, & .30 IN UPPER TWEENDECK.  
 FRAME  $5.5 \times .36$  DECK CONNECTS  $2' 4'' \times 4' 4'' \times 40$   
 - HOLD STIFFERS VERTICALS  $9 \times 3\frac{1}{2} \times 4.2$  OR  $24$  APART  
 - HORIZONTALS  $8' 1\frac{1}{2} \times 4.2 \times 0$  OR  $3' .56$   
 OR TWO  $9 \times 3\frac{1}{2} \times 4.2$

4626  
473  
17-12.09

C.7.  
22/12/09.



J L Thompson & Son

No 473.

Armed Profile

Boyne

Ad Rpt 24561

RETAIL

W512-0412



© 2020

Lloyd's Register  
Foundation