

## BOILERS.

SCALE / INCH TO A FOOT

180 LBS: WORKING PRESSURE. 2-OFF.

TOTAL HEATING SURFACE IN TWO BOILERS = 6129 SQ. FEET.

" GRATE " " " " = 134.3 " " BARS 6" 0 LONG

THE MINIMUM TENSILE STRENGTH OF SHELL & GIRDER PLATES IS TAKEN AT 28 TONS PER SQ. INCH.

Handwritten in red ink: 23.2.10 and a signature.

2/2/10 B1338

# MARINE ENGINES N<sup>o</sup> 1678.

MESSRS J. L. THOMPSON & SONS. N<sup>o</sup> 473 <sup>S</sup>/<sub>S</sub>

Feb 21<sup>st</sup> 1910  
From BLAIR & CO., Ltd.,  
STOCKTON-ON-TEES.

To Messrs Lloyd's Engineers  
Surveyors  
Middlesbrough

Steel Boilers  
Engines N<sup>o</sup> 1678

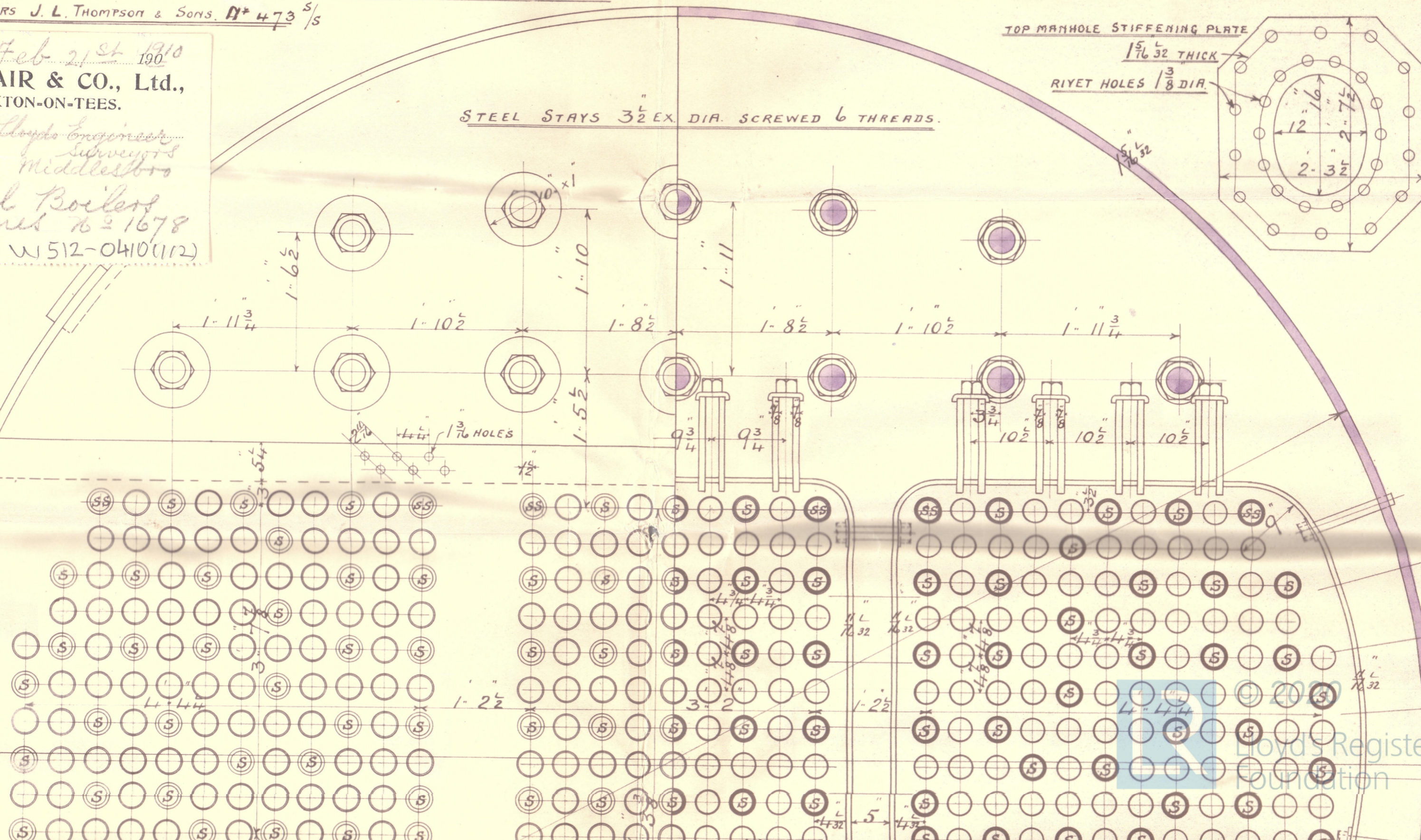
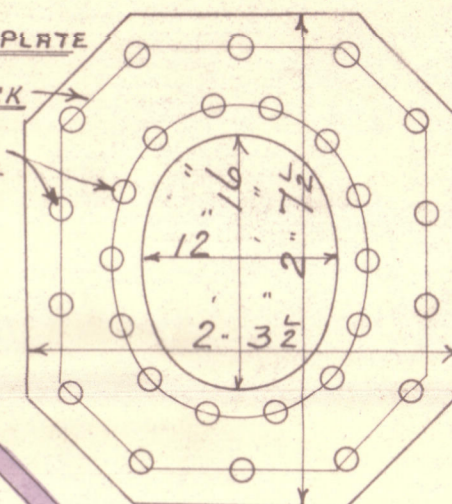
B 13502 W 512-0410(112)

STEEL STAYS 3 $\frac{1}{2}$ " EX. DIA. SCREWED 6 THREADS.

TOP MANHOLE STIFFENING PLATE

$\frac{5}{16}$  32 THICK

RIYET HOLES  $\frac{3}{8}$  DIA.



Messrs Blair & Co Linn

No 1678

for

Messrs J. L. Thompson & Co

S. S. No. 473

Working Pressure 180 lbs.

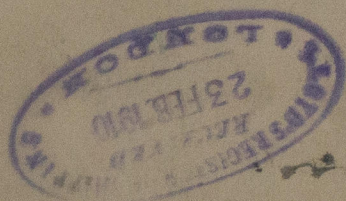
Amended plan

S. S. "Boyne"

No. 4446
LLOYD'S TEST
360 lbs.
15. 6. 10. J. K.

Indt Rpt- No 6391

Sl. Rpt. No 24561



RETAIN

W512-0410(212)



© 2020

Lloyd's Register  
Foundation