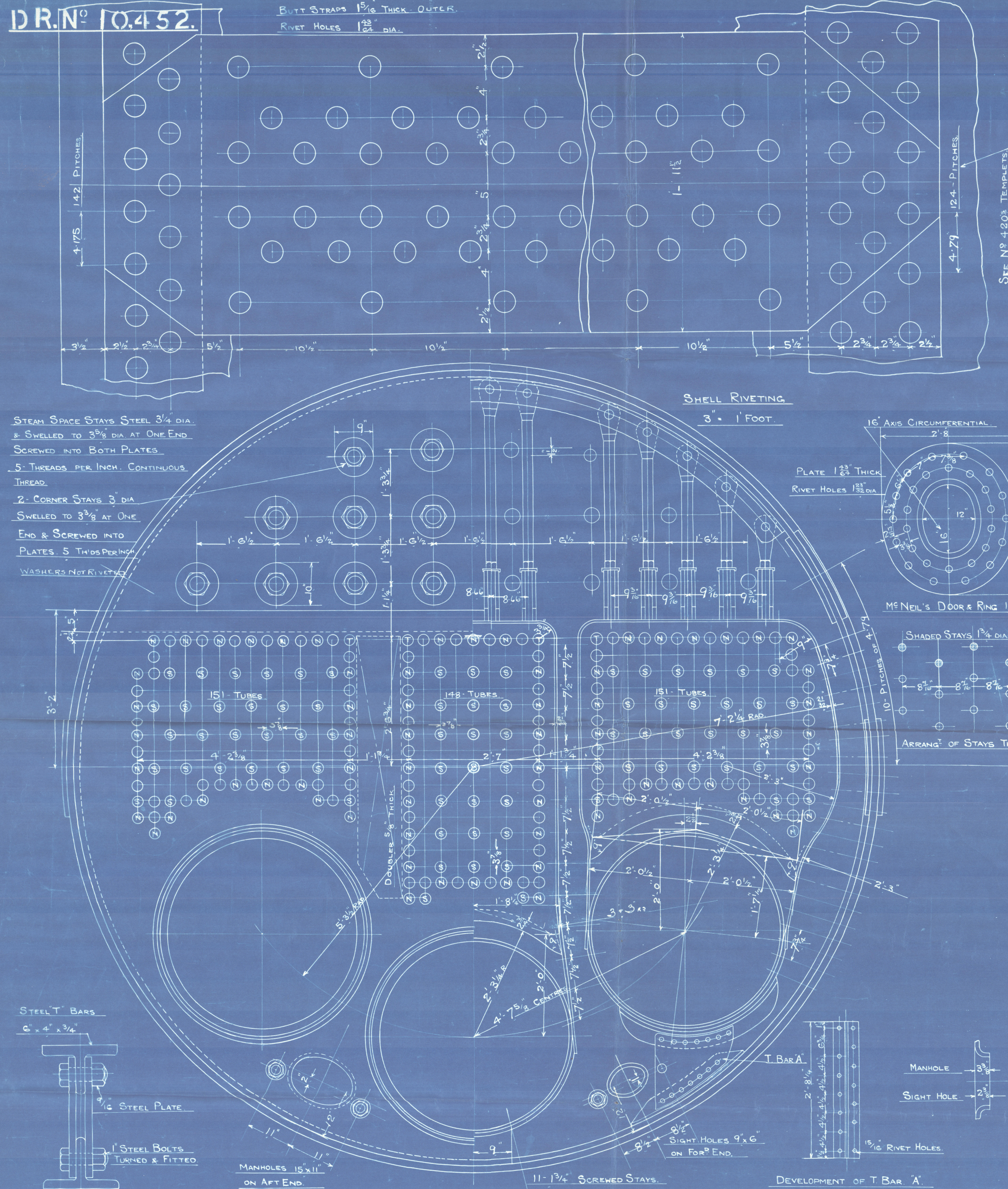


DR. N^o 10,452.

BUTT STRAPS $1\frac{1}{8}$ " THICK. INNER
BUTT STRAPS $1\frac{1}{8}$ " THICK. OUTER
RIVET HOLES $1\frac{1}{8}$ " DIA.

STEAM SPACE STAYS STEEL $3\frac{1}{4}$ " DIA.
& SWELLED TO $3\frac{3}{8}$ " DIA AT ONE END
SCREWED INTO BOTH PLATES.
5 THREADS PER INCH. CONTINUOUS
THREAD.
2 CORNER STAYS $3\frac{1}{4}$ " DIA
SWELLED TO $3\frac{3}{8}$ " DIA AT ONE
END & SCREWED INTO
PLATES. 5 THROSPER INCH
WASHERS NOT RIVETED.



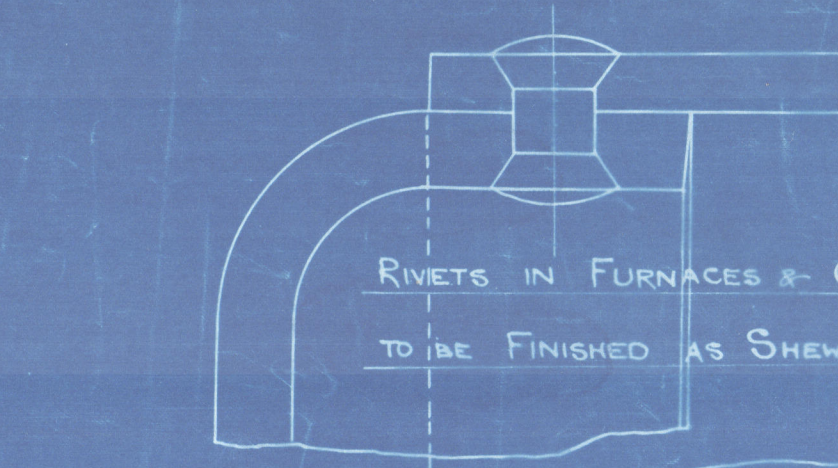
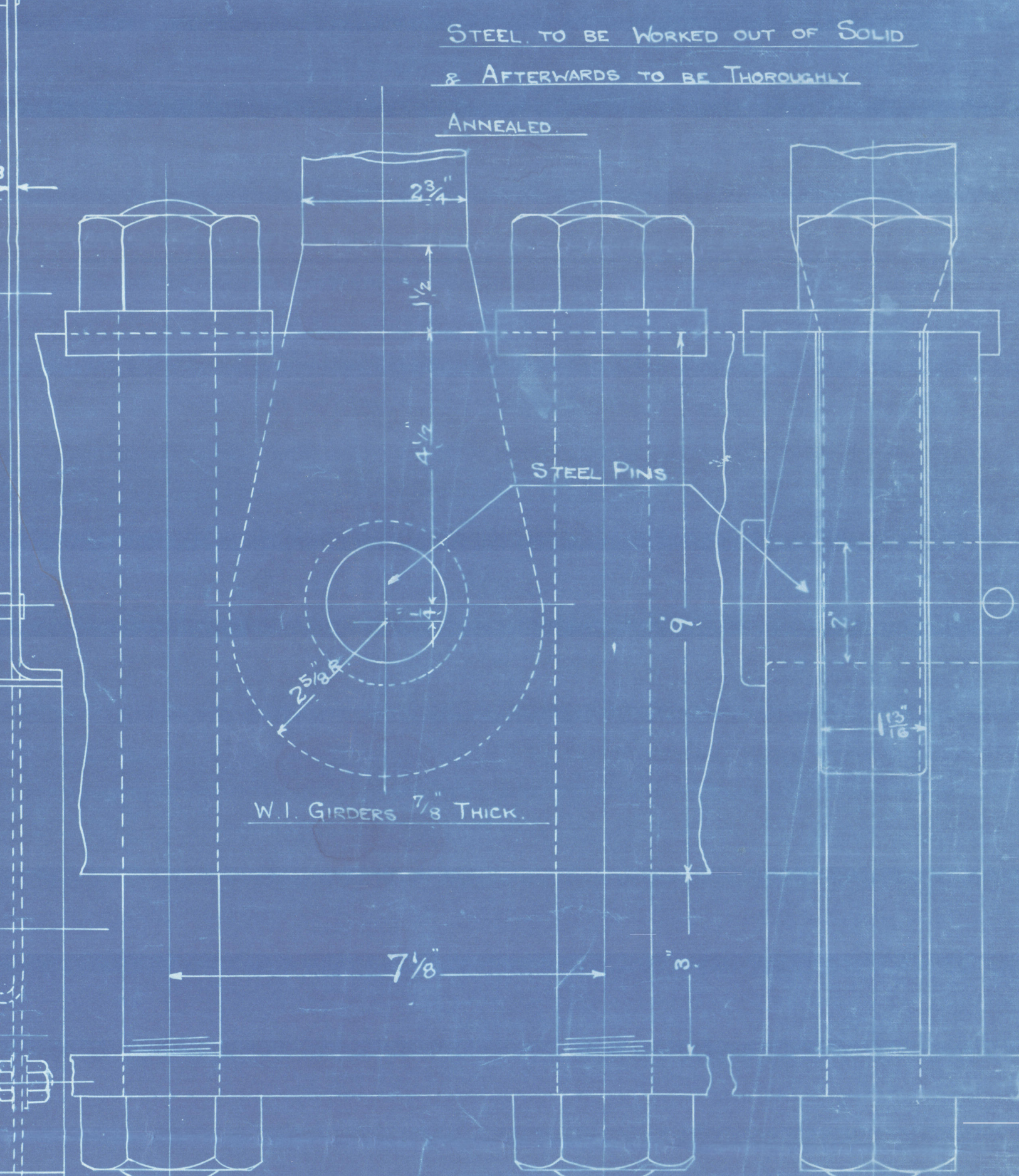
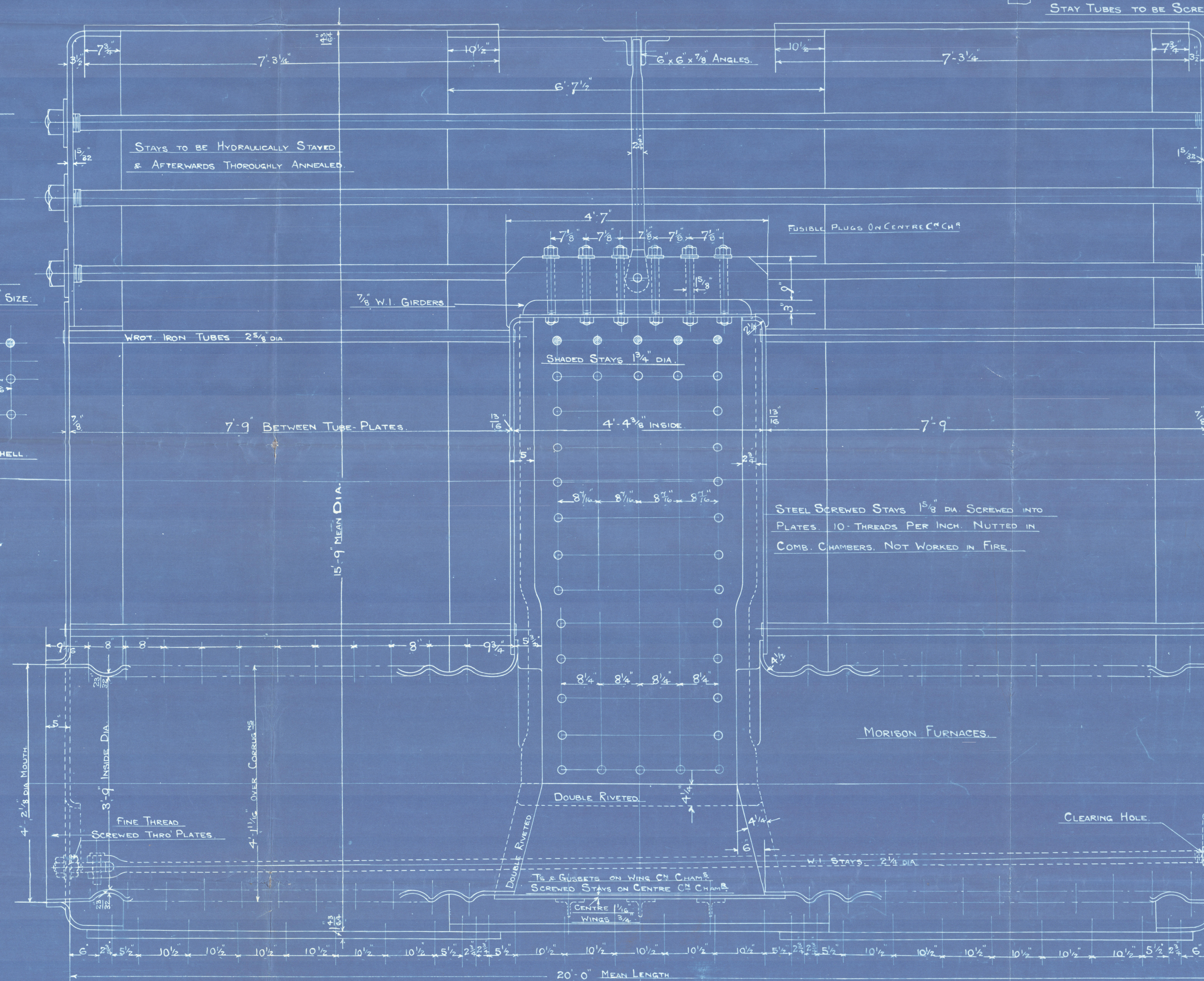
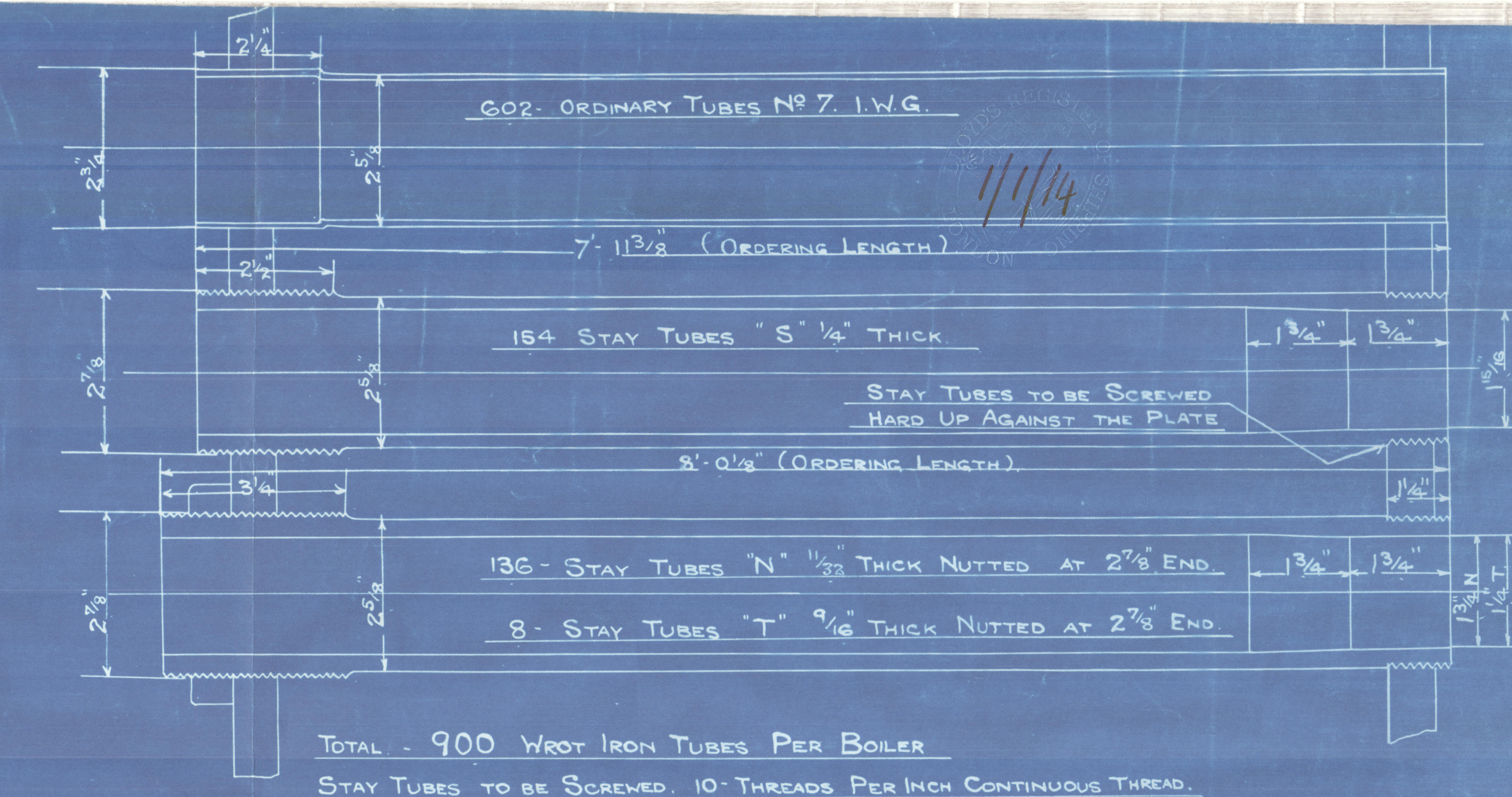
PARTICULARS OF RIVETING

SHELL	LONGITUDINAL SEAMS DOUBLE BUTT STRAPS RIVETED AS SHOWN
	STRENGTH OF PLATE 84.07% STRENGTH OF RIVET 93%
	CIRCUMFERENTIAL SEAMS TREBLE RIVETED AT CENTRE AS SHOWN
ENDS	DOUBLE
	LAPPED DOUBLE RIVETED $1\frac{1}{8}$ " RIVETS $3\frac{3}{8}$ " PITCH
	FURNACES & CHAMBERS DOUBLE RIVETED $\frac{7}{8}$ " RIVETS 3" PITCH; SINGLE RIVETED $\frac{7}{8}$ " RIVETS $2\frac{1}{2}$ " PITCH
ALL PLATES & RIVETS STEEL. ALL HOLES DRILLED IN PLACE	MINIMUM TENSILE STRENGTH OF SHELL PLATES 29 TONS PER SQ. INCH
	MAXIMUM 33
	MINIMUM BUTT STRAPS 28
MAXIMUM	ENDS & CHAMBERS 26
	MINIMUM 30
	MAXIMUM

WORKING PRESSURE 215 LBS PER SQ. INCH.

TEST 430 LBS.

HEATING SURFACE ETC	1 BOILER	10 BOILERS
TUBES	4790 #	
FURNACES	352	
COMB CHAMBERS	304	
FRONT TUBE PLATES	64	
TOTAL	5510 #	55100 #
STEAM SPACE	820 #	8200 #
GRATE AREA (6' 9" BAR)	129 #	1290 #
AREA THRO TUBES	252 #	2520 #



10-OFF

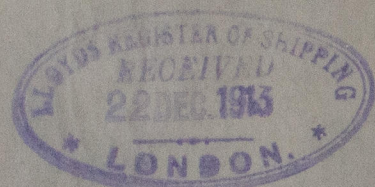
D. E. MAIN BOILER. N^o 391.

SCALE 1" = 1 FOOT

UNDER SURVEY OF BOARD OF TRADE. AND LLOYD'S UNDER SURVEY OF BOARD OF TRADE. APPROVED BY LLOYD'S FOUNDATION.

Belfast
Harland & Wolff L.
J.S.S. 391 11
Main Builders

Lloyds



RETAIN

W512-0275



© 2020

Lloyd's Register
Foundation