

SUNDERLAND SHIPBUILDING CO. LD.
DRAWING OFFICE.
No. 259 2/3 25 JUL. 1910
SUNDERLAND.

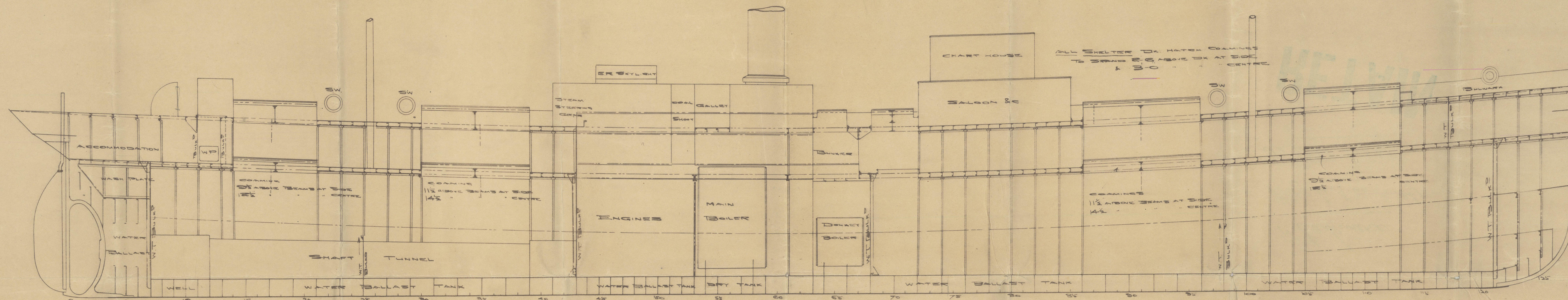
No 259 2/3 PROFILE. As Built

PRINCIPAL DIMENSIONS

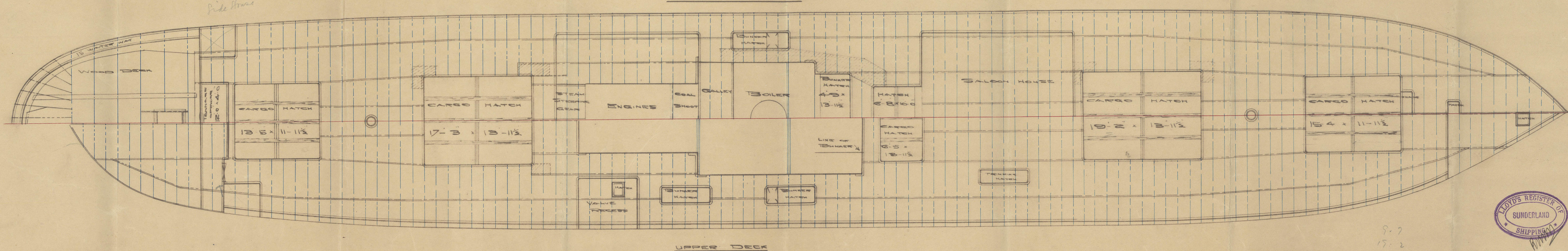
LENGTH BP 245-0 BREADTH EXT 36-0 x 18-2 3/4 DMLD

CLASS 100A LLOYDS SHELTER DECK

SCALE 8=1-0



SHELTER DECK



UPPER DECK



W. Oakmere

Profile (as built)

Std. Rpt. 24531

RETAIN



© 2020

Lloyd's Register

Foundation
WS10-024