

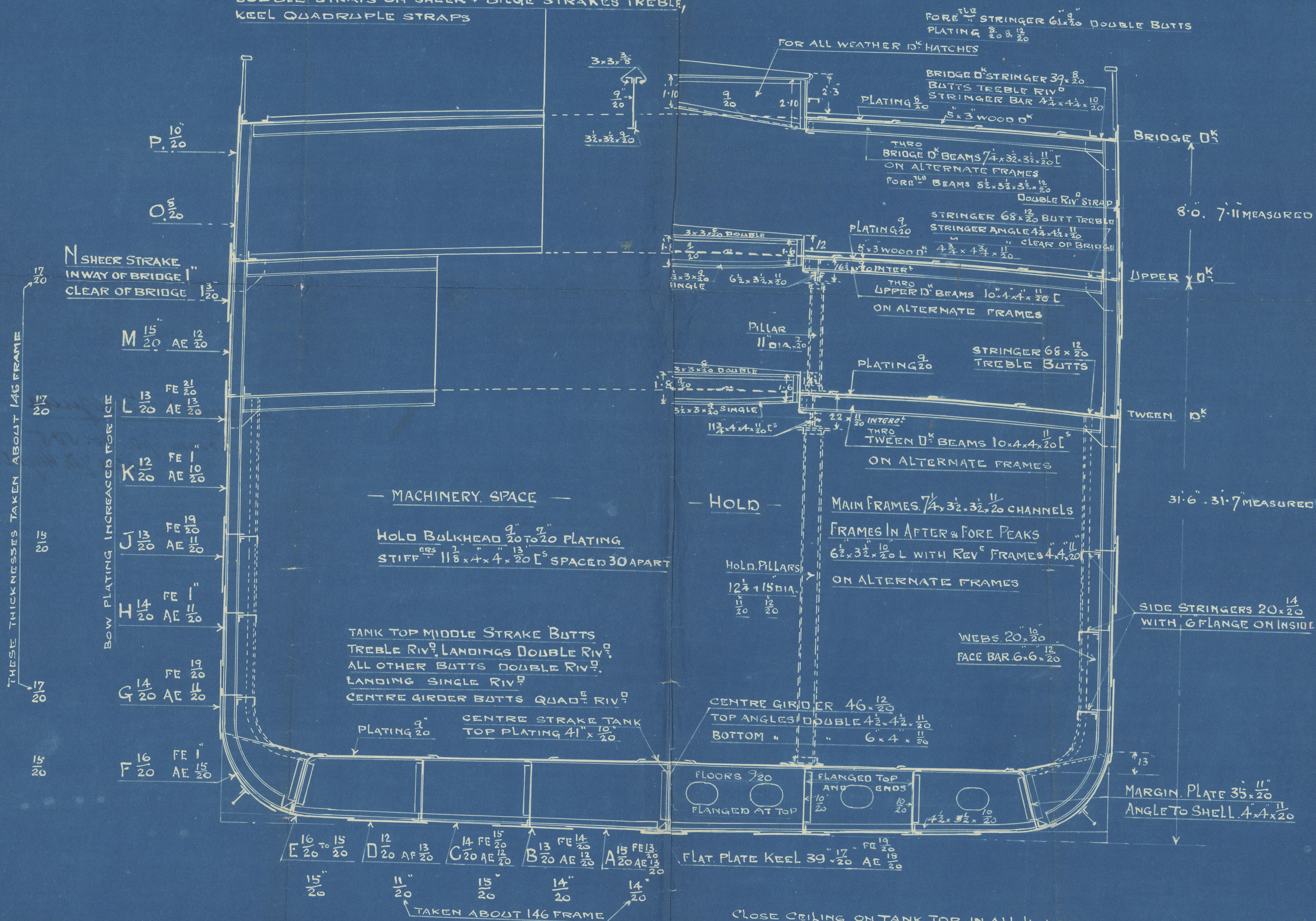
2.2.21

— TWIN SCREW STEAMER —
 — "ADOLPH WOERMANN" —
 — MIDSHIP SECTION —
 — SCALE $\frac{1}{4}$ = ONE FOOT. —

LENGTH 412.0
 BREADTH 50.6
 DEPTH 31.6 MEASURED 31.7

SHELL RIVETING INCLUDING BRIDGE SIDE & SHEER
 MIDSHIP BUTTS QUADRUPLE, ENOSTREBLE,
 LANDINGS DOUBLE,
 DOUBLE STRAPS ON SHEER & BILGE STRAKES TREBLE,
 KEEL QUADRUPLE STRAPS

STERN FRAME FOR RUDDER $13\frac{3}{4} \times 7$
 " PROPELLER POST ABOUT $14\frac{1}{2} \times 7$
 " RUDDER HEAD $10\frac{1}{2}$
 " HEEL $7\frac{3}{8}$



The Aft End & Fore End Machinery
 measured immediately for 9 April
 and about 1000 hours

CLOSE CEILING ON TANK TOP IN ALL HOLDS
 AND SPAR CEILING FITTED IN ALL
 HOLDS AND CARGO SPACES

"WESTMINSTER ABBEY"

EX "Adolph Hoermann"

Mind Section

now named "Venezuela"

Krumm Apt. No. 505

dated 7th August 1921

REMAIN



© 2020

Lloyd's Register

W50-00410