

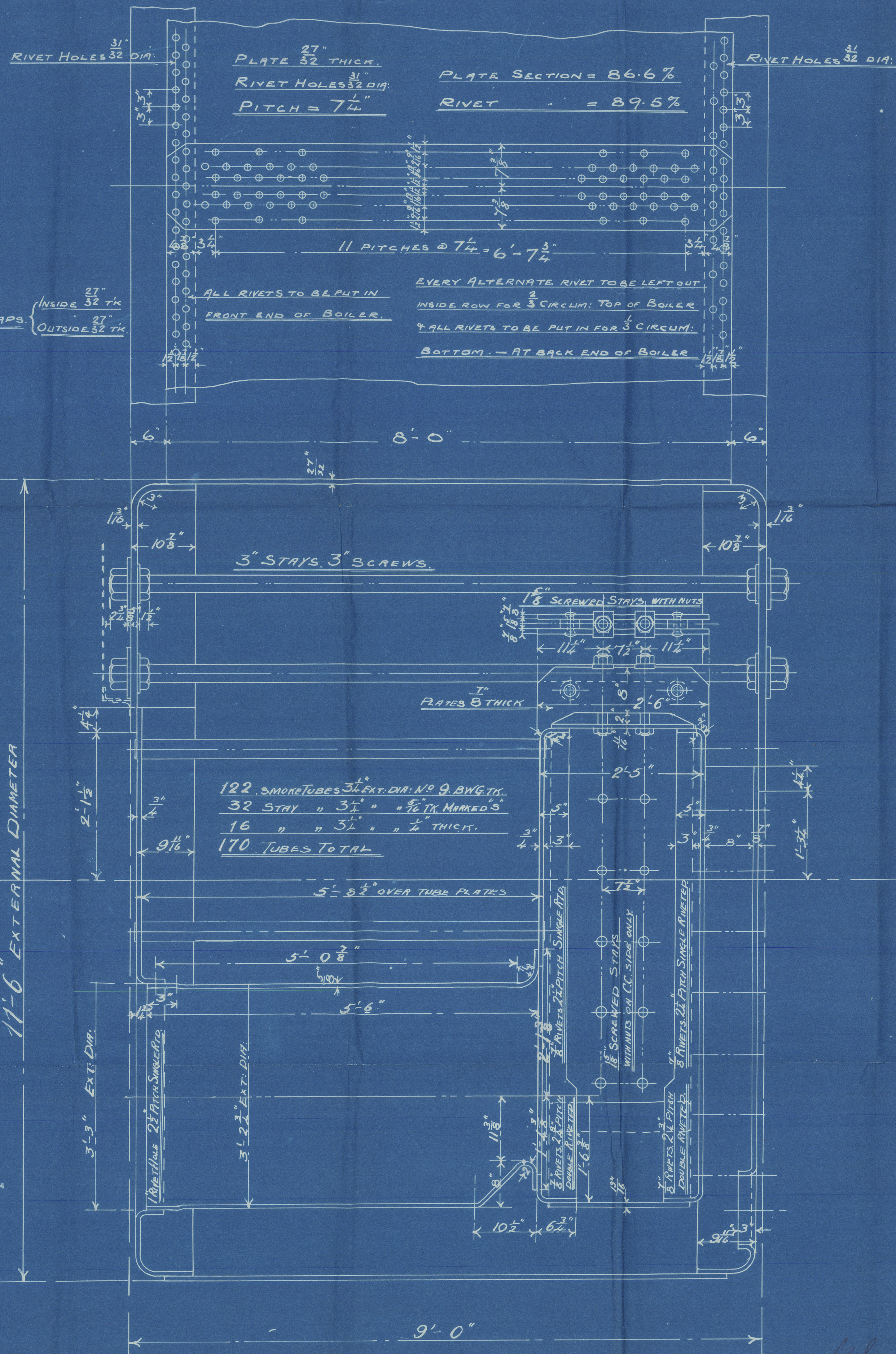
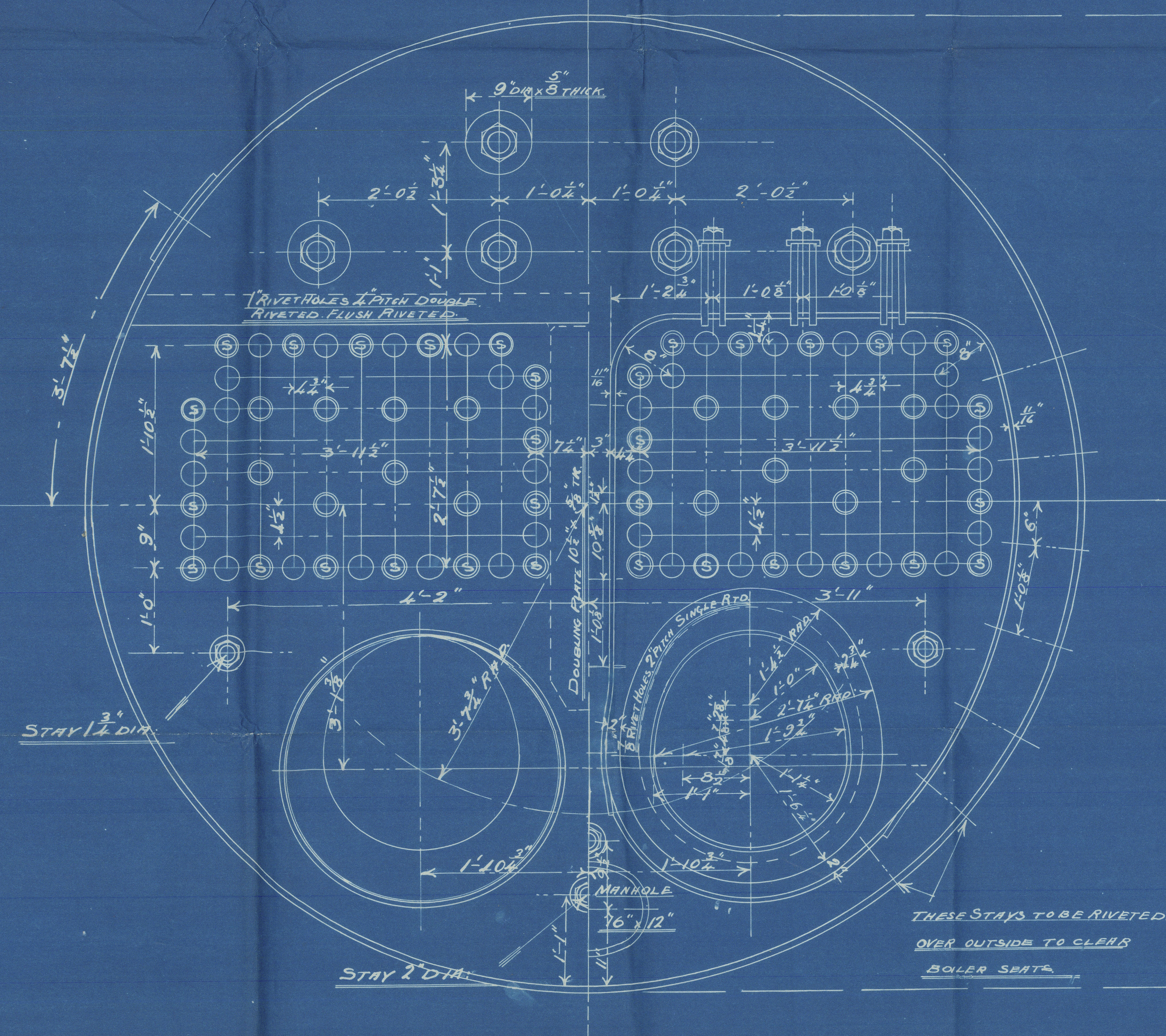
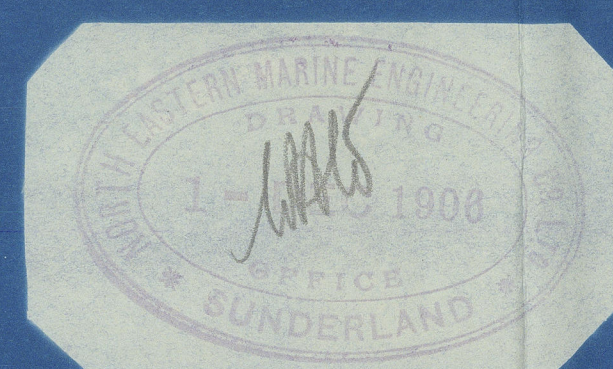
CUNDERLAND ENGINE WORKS

5/12/06

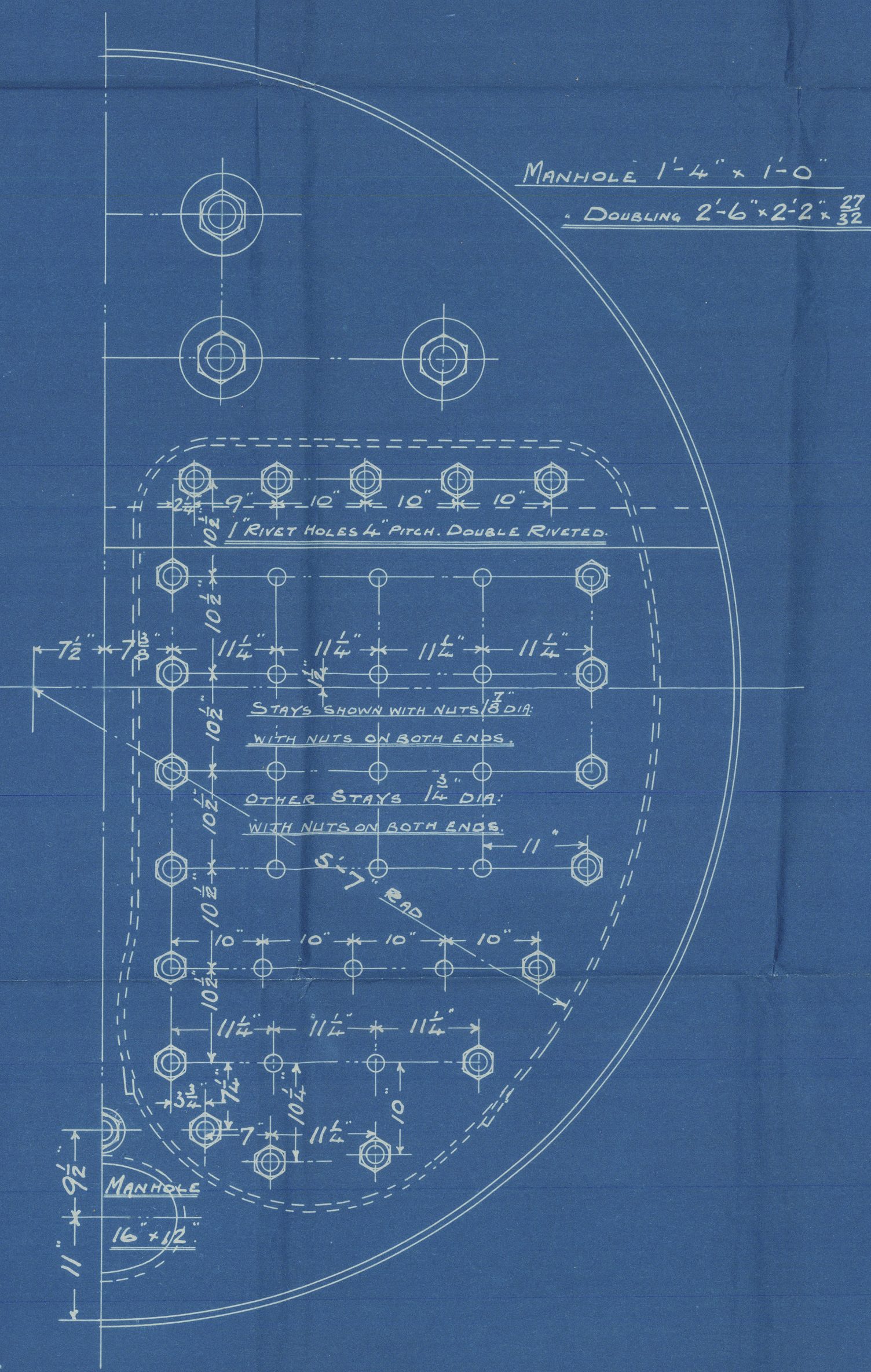
BOILER

TRACING 1983 SCALE - 1/4" TO A FOOT SCHEDULE "L"

WRITTEN DIMENSIONS ONLY TO BE TAKEN



TO PASS LLOYD'S SURVEY	
$\frac{22.36 (13.4-2) 86.6}{136.3125}$	= 163.3 LBS. PER SQ. IN.
WORKING PRESSURE	= 160 LBS. PER SQ. IN.
TEST	= 320 " " " "
HEATING SURFACE ON TUBES	= 827 SQ. FT.
" " OTHER PARTS	= 251 " " "
" " TOTAL	= 1078 " " "
EX FRONT TUBE PLATE	= 1050 " " "
EFFECTIVE AREA OF STAYS	
3 1/2" STAY TUBES 16 TH. 9 THREADS PER INCH	2.17 SQ. INCHES
3 1/2" " " 1/4" 9 " " " "	1.64 " " "
3" MAIN STAYS . 6. " " " "	6.1 " " "
2" " " 6. " " " "	2.51 " " "
1 1/2" " " 6. " " " "	1.85 " " "
1 1/8" SCREWED " 11. " " " "	2.43 " " "
1 1/4" " " 11. " " " "	2.1 " " "
1 1/8" " " 11. " " " "	1.79 " " "
ALL PLATES RIVETS & STAYS	STEEL
TUBES	WROUGHT IRON
HOLES TO BE DRILLED IN PLACE AFTER BENDING	
TENSILE STRENGTH OF SHELL PLATES, NOT LESS THAN 28 TONS	
" " " MAIN STAYS	27 " "



DRAWN BY J.A.S.
CHECKED BY K.R.G.H.R.
TRACED BY J.A.S.
CHECKED BY J.A.S.
TRACING No. 1983

1/12/06

1983 J.A.S.
4/10/06
4-12-06

CONTRACT 1750 2 OFF.

J. CROWN Lms — 125

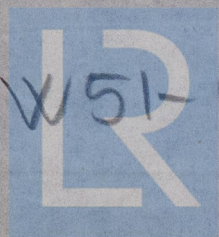
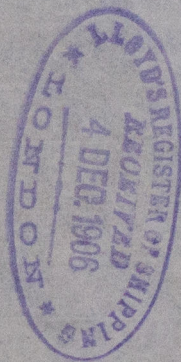
NEW — 1750

2 Bm

5/s Knottingly

Sld F. E. No 23325.

No 2580
Lloyds test
320. lb.
22/2/07
A.B.



© 2021

W51-0204

Lloyd's Register
Foundation