

OERTZ PATENT RUDDER

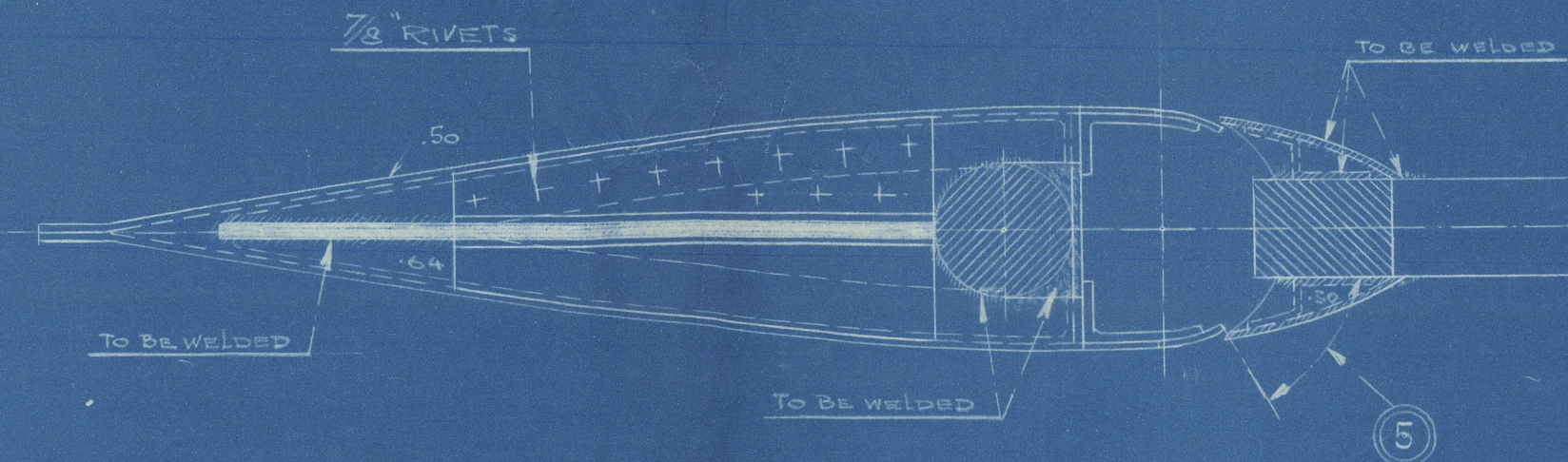
FOR

SS. "HAZELWOOD" of KIRKWOOD-

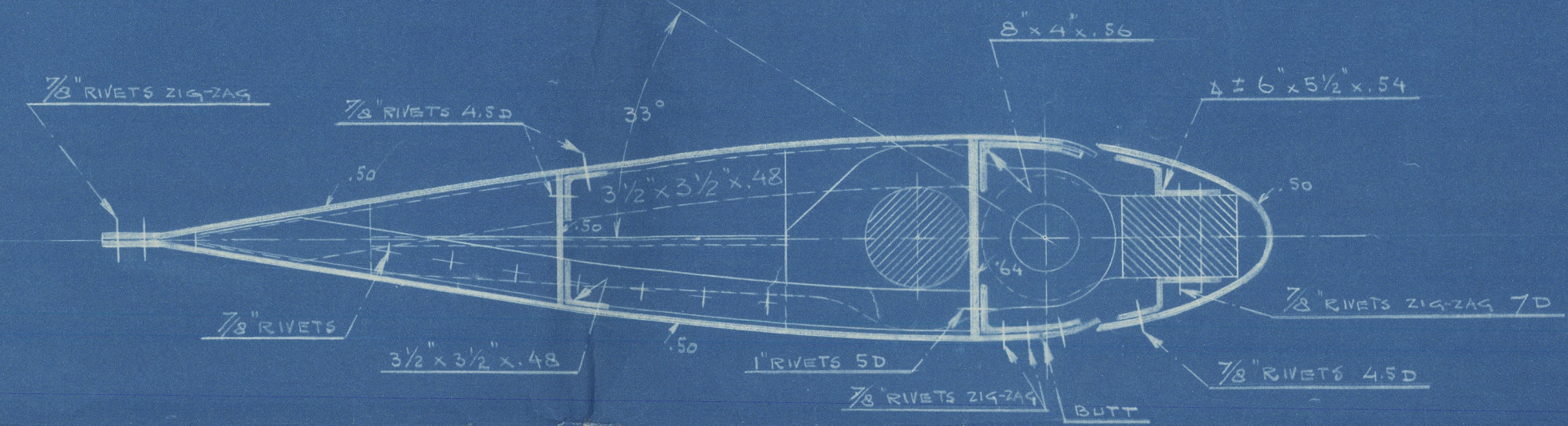
366'-0" x 52'-3 3/4" x 24'-3"
21'-4 1/2"

SCALE 1/2" = 1 FOOT

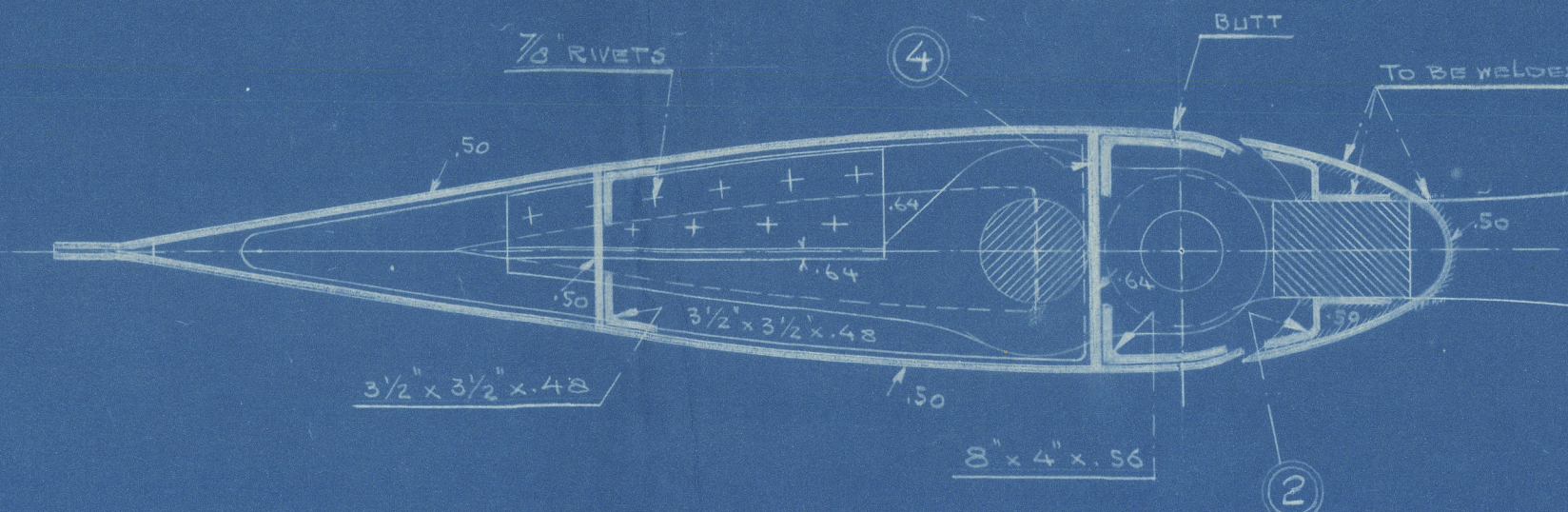
SECTION B-B



SECTION C-C

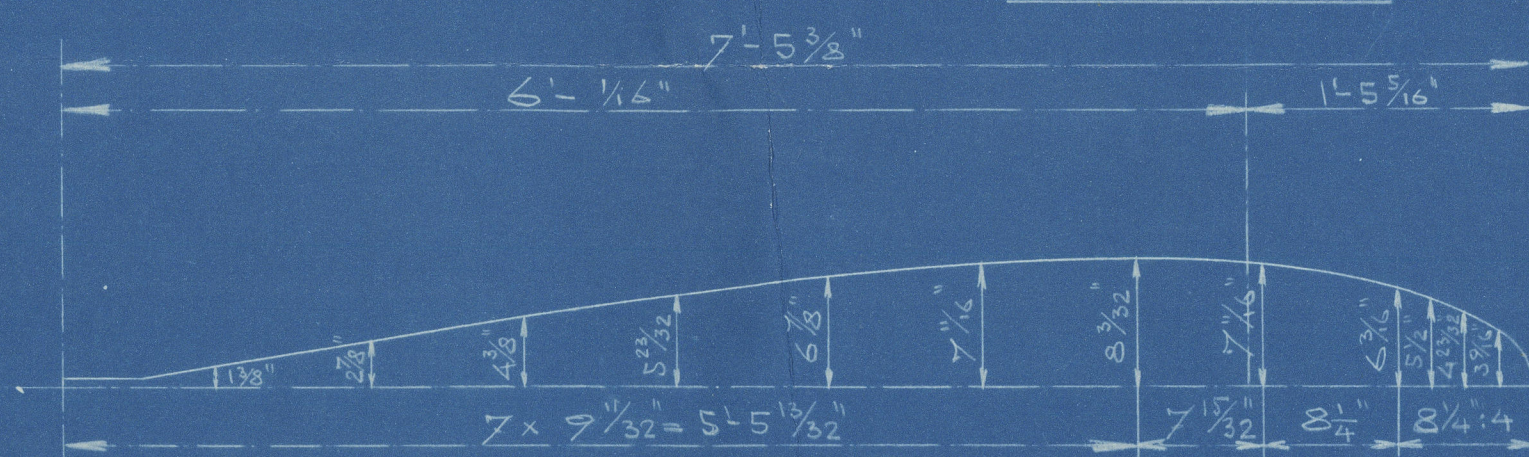


SECTION D-D



OUTLINE OF RUDDER

OUTSIDE OF PLATE.



MARINE NAVIGATION CO. LTD.

LONDON

JANUARY 1929

345

Lloyds

Newcastle

Kirnwood

S.S. KIRNWOOD

OERTZ PATENT RUDDER

S.S. KIRNWOOD.

NEWCASTLE ON TYNE.

Port No. 83871.

W51- 0137



© 2021

Lloyd's Register
Foundation