

SURFACES		ONE BOILER	3 BOILERS
TUBES		2250 #	6750 #
FIREBOX TOP & SIDES		192	576
BACK		81	243
TUBE PLATE		53	159
FURNACES		134	402
TOTAL HEATING SURFACE		2730 #	8190 #
GRATE AREA (5-6" BARS)		57.3	172
TUBE AREA		106.65	319.95
WATER		169.5	508.5
STEAM SPACE		515	1545
GRATE HEATING SURFACE		1:47.6	
TUBE		1:39.3	
WATER		1:2.96	
STEAM SPACE		1:9	
% BOILER ABOVE FIREBOX		31.1	
WEIGHT OF WATER		30 TONS	90 TONS

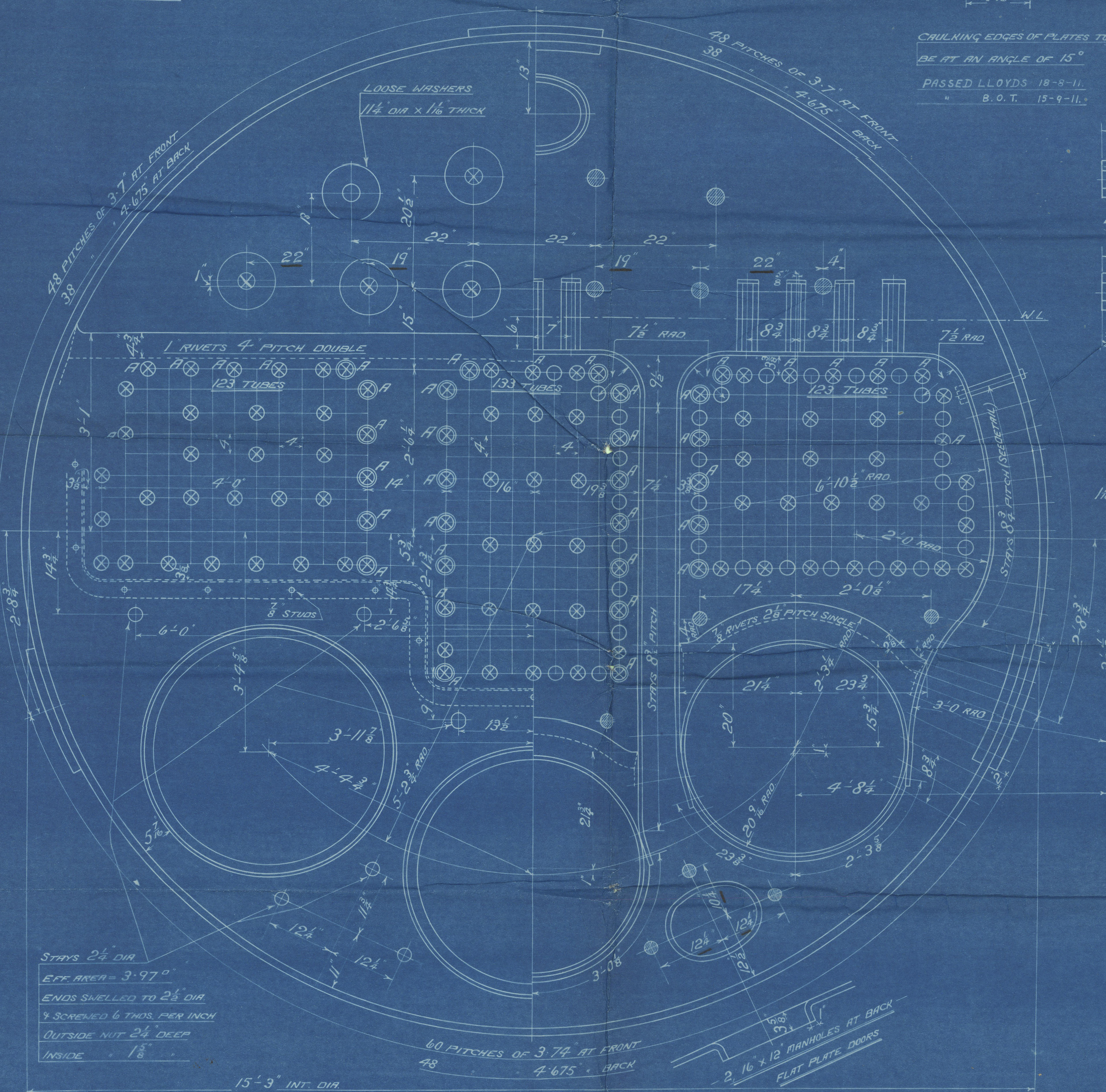
RIVETING			
	LONG	BACK	FRONT
RIVET HOLE DIA.	1 1/8"	1 1/8"	1 1/8"
PITCH	10.5"	4.675"	3.793.74"
% PLATE	83.9	64	61.2
% RIVET	16.1	36	38.8

LIMITS OF TENSILE STRENGTH & MATERIAL	
SHELL & BUTTSTRAPS	30 TO 34 TONS
GIRDERS	28 " 32 "
OTHER PLATES	26 " 30 "
FURNACES	26 " 30 "
MAIN STAYS	28 " 32 "
SCREENED STAYS	27 " 30 "
RIVET BARS	26 " 30 "

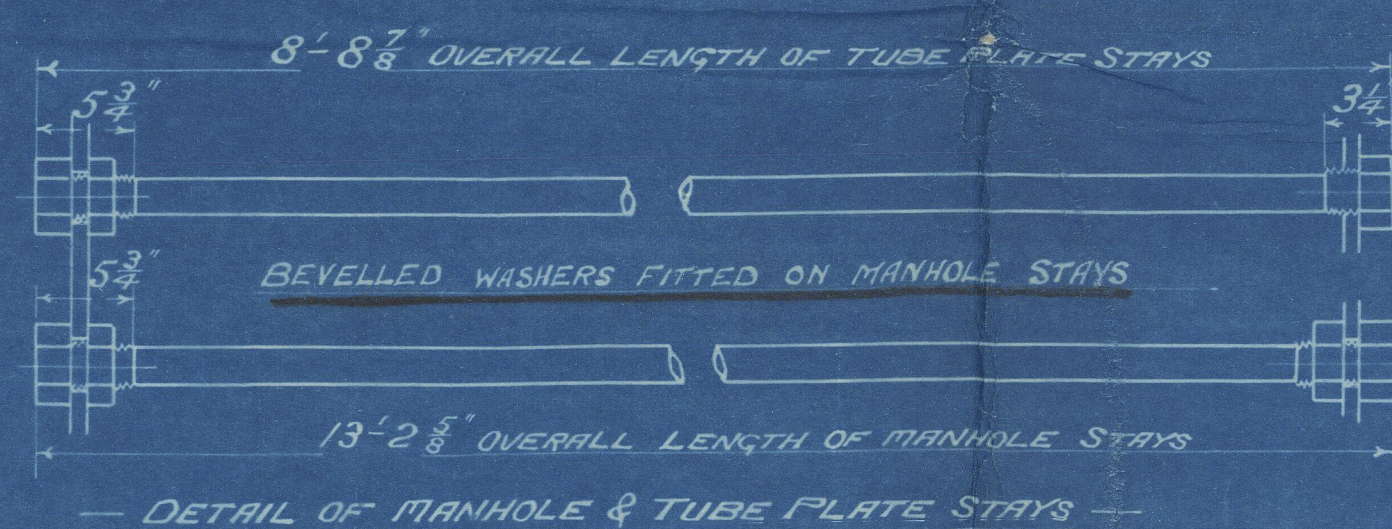
ALL RIVET HOLES DRILLED IN PLACE.  
MAIN STAYS SHELLED AT ENDS BY HYDRAULIC  
PRESSURE & ANNEALED.

ONE 16" x 12" MANHOLE AT EACH  
FLAT PLATE DOOR

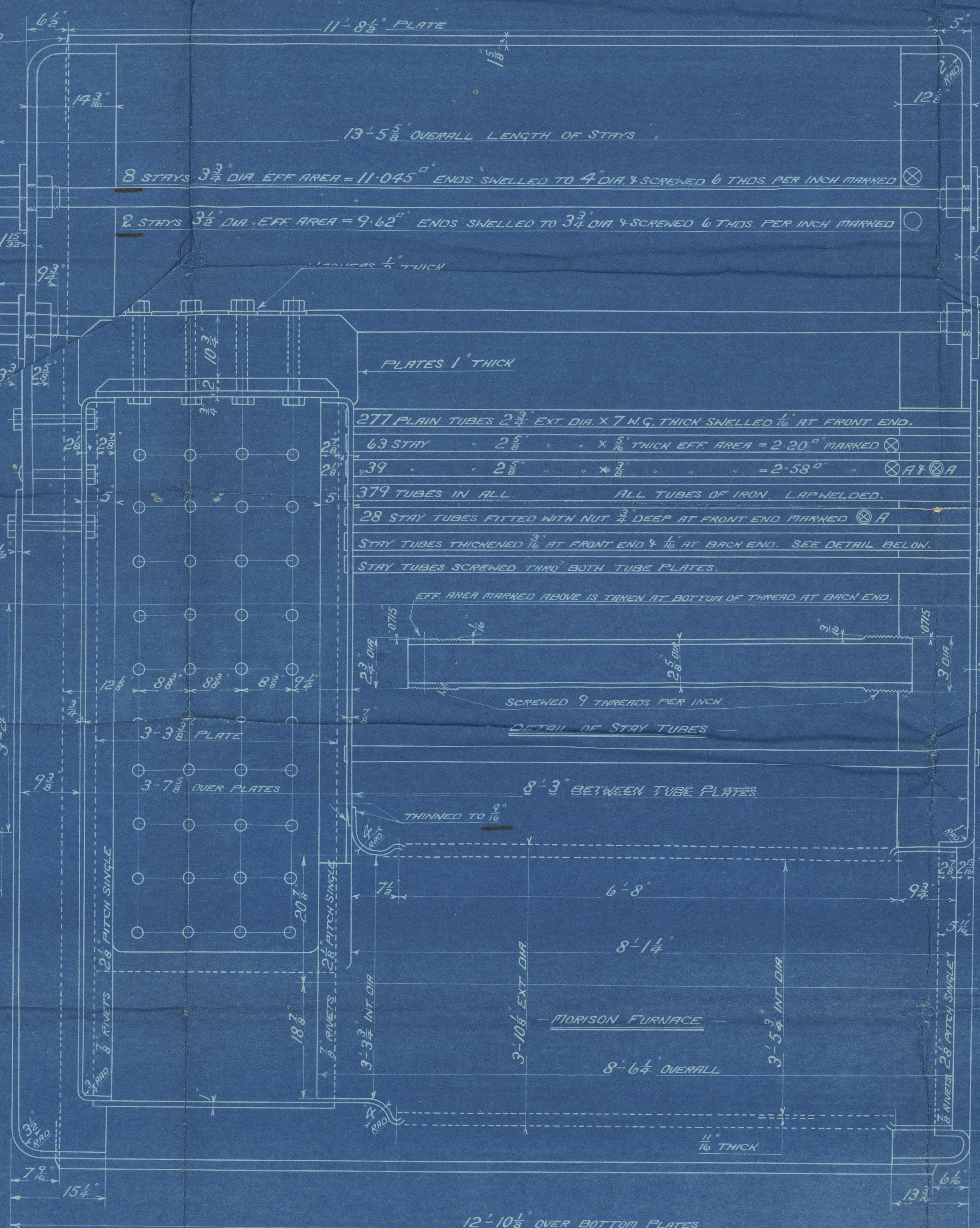
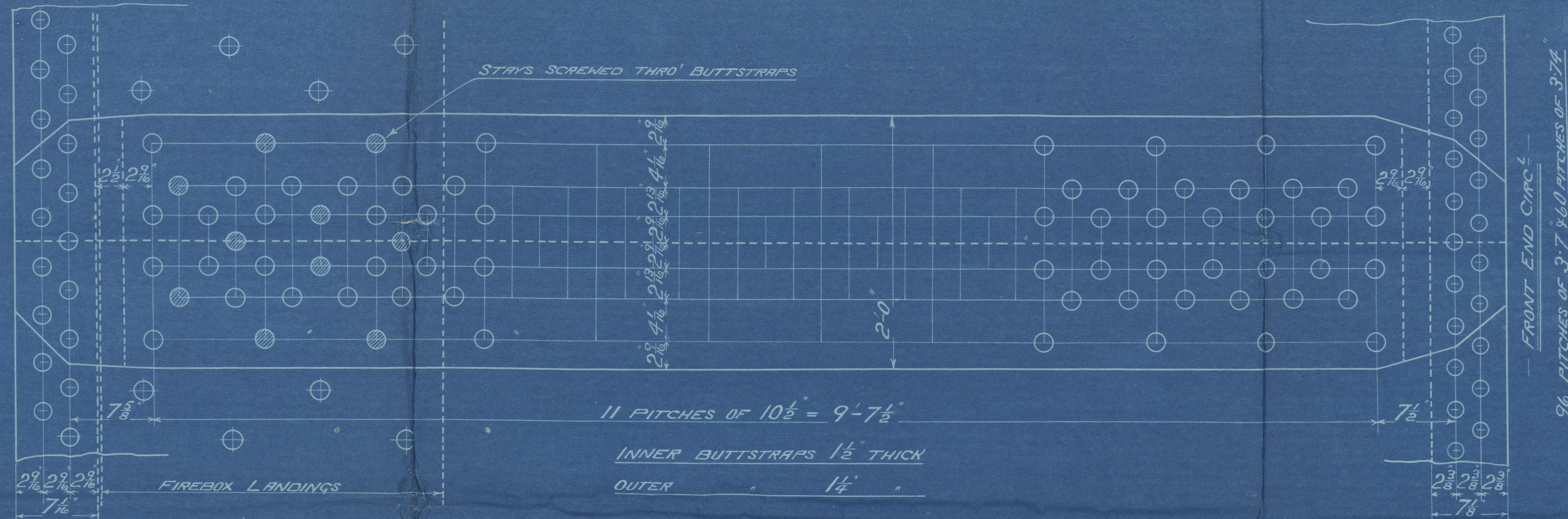
CAULKING EDGES OF PLATES TO  
BE AT AN ANGLE OF 15°  
PASSED LLOYDS 18-9-11.  
B.O.T. 15-9-11.



STAYS 2 1/2" DIA.  
EFF. AREA = 3.97"  
ENDS SHELLED TO 2 1/2" DIA.  
& SCREENED 6 THDS. PER INCH  
OUTSIDE NUT 2 1/2" DEEP  
INSIDE 1 1/8"



ARRANGEMENT OF STAYS FROM NING FIREBOX TO SHELL



MAIN BOILER  
3 OFF  
CONT. N° 575

WORKING PRESSURE = 220 LBS. PER SQUARE INCH.  
TO PASS LLOYDS & BOARD OF TRADE SURVEYS  
SCALES 1" = 1 1/2" ONE FOOT.

FIREBOX STAYS - STEEL			
POSITION	MARK	DIA.	EFF. AREA
TOP SIDES & BACK	○	1 3/8"	2.07"
BACK OUTER ROWS	○	2"	2.75"

ALL STAYS SCREENED THRO' BOTH PLATES AND NUT FITTED  
AT EACH END EXCEPT STAYS IN SHELL AND STAYS  
MARKED ○ IN FIREBOX BACK.  
STAYS THRO' SHELL PROJECT 3" THRO' OUTER PLATE AND ARE CAULKED  
STAYS MARKED ● ARE RIVETED OVER AT OUTER ENDS.  
1 1/2" NUTS 1" DEEP  
2" 1/8"



0.014780  
111-6587  
TRACED 14TH AUG 1911



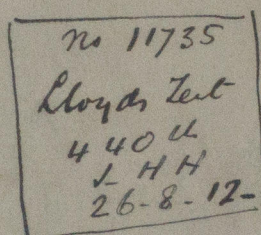
David Rawson & Co.

24575

Main Boilers.



J. J. Coluse



GLASGOW REPORT No. 32483



RETAI



© 2020

Lloyd's Register  
Foundation

W508-0061