

SURFACES	
TUBES	287 $\frac{1}{2}$
FIREBOX TOP & SIDES	18
BACK	15
TUBE PLATE	11
FURNACES	26
TOTAL HEATING SURFACE	357 $\frac{1}{2}$
GRATE AREA (BARS)	
TUBE AREA	192
WATER	49.5
STEAM SPACE	60.5 $\frac{1}{2}$
GRATE AREA: HEATING SURFACE	
" " TUBE	
" " AREA	
" " WATER	
" " STEAM SPACE	
% BOILER ABOVE FIRE BOX	30.1
WEIGHT OF WATER	3 TONS

RIVETING	
LONG L	END CIRC. L
RIVET HOLE DIA	$\frac{13}{16}$
PITCH	3.3125" 2.63"
% PLATE	75.5 69
% RIVET	11000 S.O.T. LLOYD S.O.T.
	79.9 75.9 67 63.5

LIMITS OF TENSILE STRENGTH & MATERIAL	
SHELL & GIRDERS	28,495 TO 32 TONS
OTHER PLATES	26 " 30 "
FURNACES	26 " 30 "
MAIN STAYS	28 " 32 "
SCREENED STAYS	27 " 30 "
RIVET BARS	26 " 30 "

Differences underlined in black by D.R. & Co. 3/5/12

## DONKEY BOILER

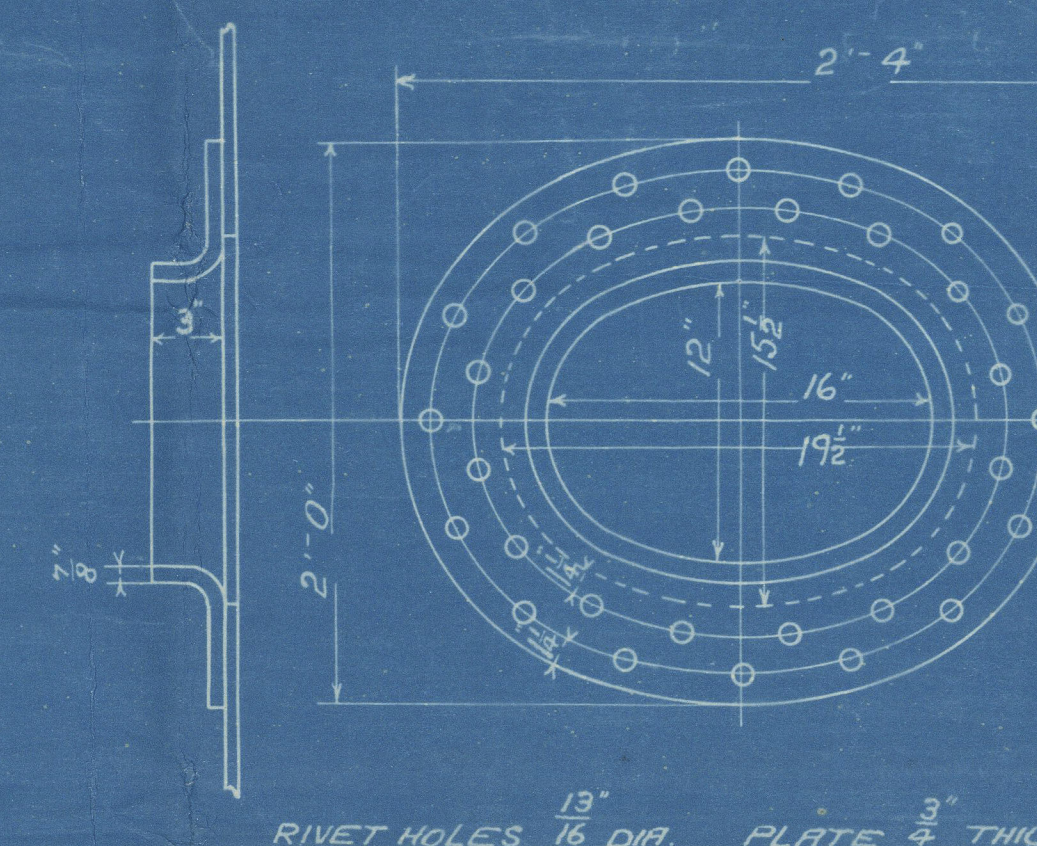
ONE OFF

CON<sup>T</sup> NO 575

WORKING PRESSURE = 120 LBS. PER SQ. INCH.

TO PASS LLOYD'S AND BOARD OF TRADE SURVEYS.

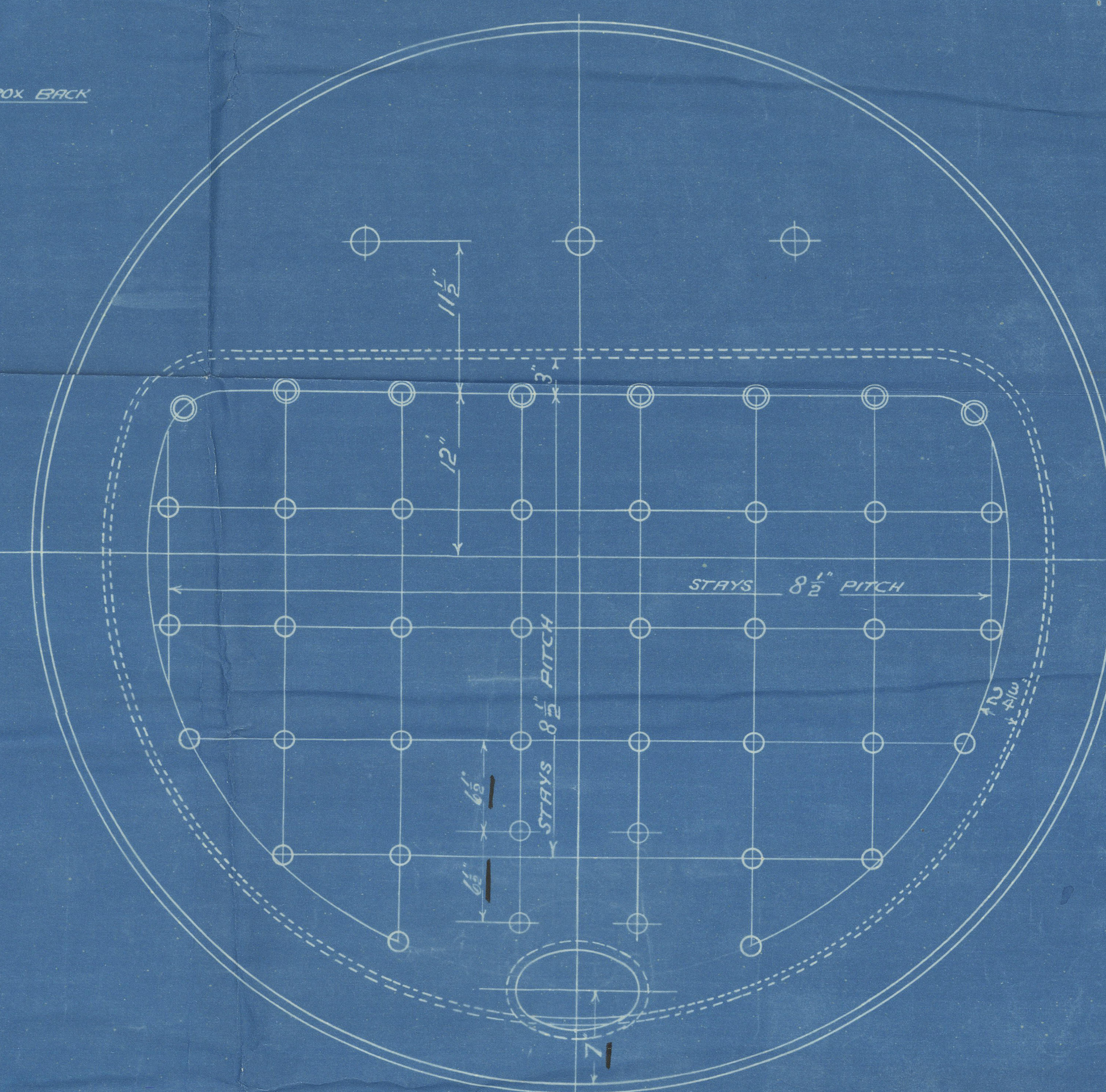
SCALE  $\frac{1}{2}$ " = ONE FOOT



RIVET HOLES  $\frac{13}{16}$  DIA. PLATE  $\frac{3}{4}$  THICK

SHELL MANHOLE COMPENSATING RING

FLAT PLATE DOOR



ONE 9x6 MANHOLE AT BACK

FLAT PLATE DOOR

FIREBOX STAYS - STEEL

POSITION	MARK	DIA	EFF. AREA
BACK TOP & SIDES	○	$\frac{13}{16}$	1' 22"
" " ROY	○	$\frac{13}{16}$	1' 48"

ALL STAYS SCREENED THRO' BOTH PLATES AND NUT FITTED AT EACH END, EXCEPT WHERE OTHERWISE STATED ON DRAWING.  
ALL NUTS 1" DEEP EXCEPT ON GIRDER TOPS WHERE THE OUTSIDE NUTS ARE  $\frac{1}{2}$ " DEEP.

0.715208 B

TRACED 27 NOVEMBER 1915



DONKEY BOILER



W508-00592 1/2

© 2020

From DAVID ROWAN & CO., GLASGOW.

ENCLOSURE

FOR MESSRS.

Lloyd's Registry  
Foundation



D. Rowan & Co  
D. B. made  
by Handley Bennett  
No 1380.

J. J. Colusa

GLASGOW REPORT No.

82483



RETAIN

© 2020

W508 - 0059 1/2



Lloyd's Register  
Foundation