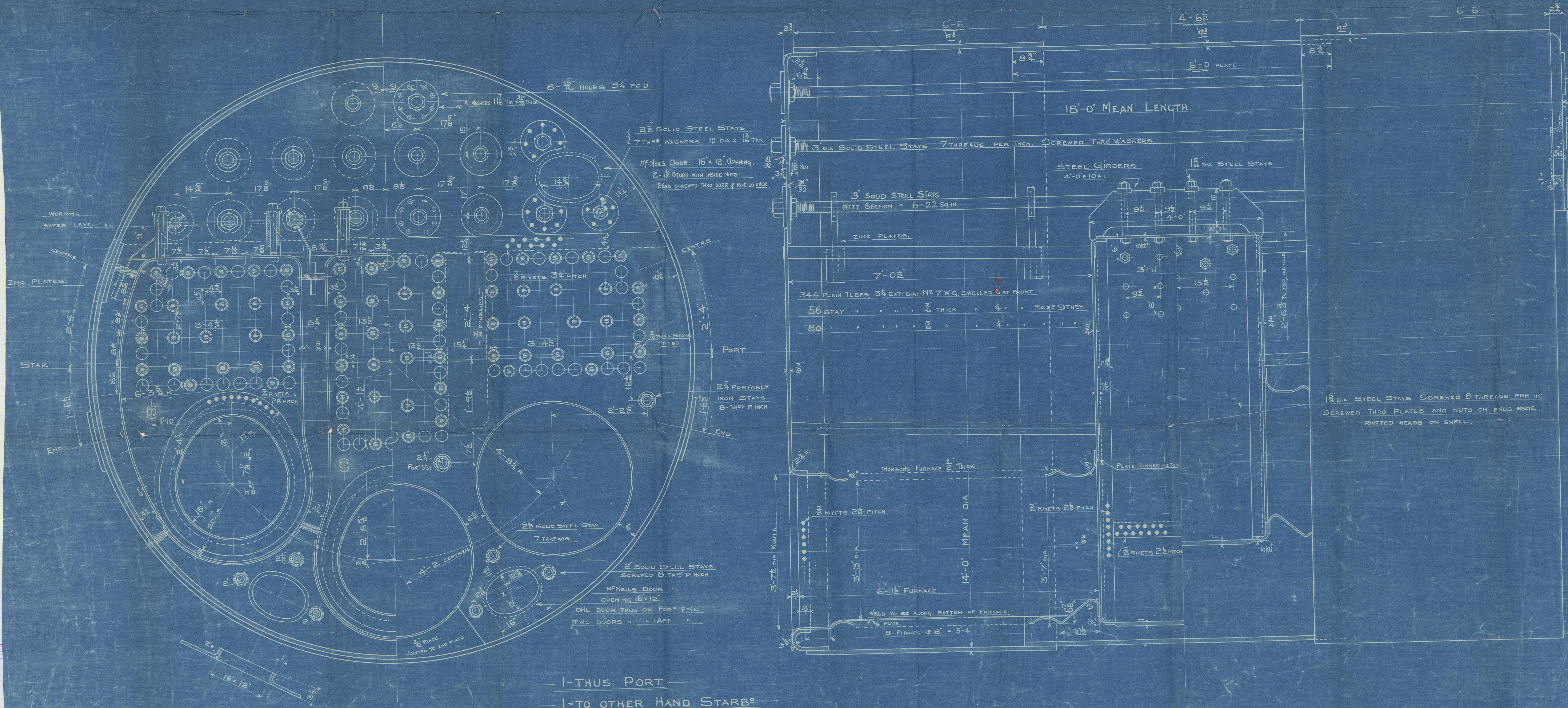
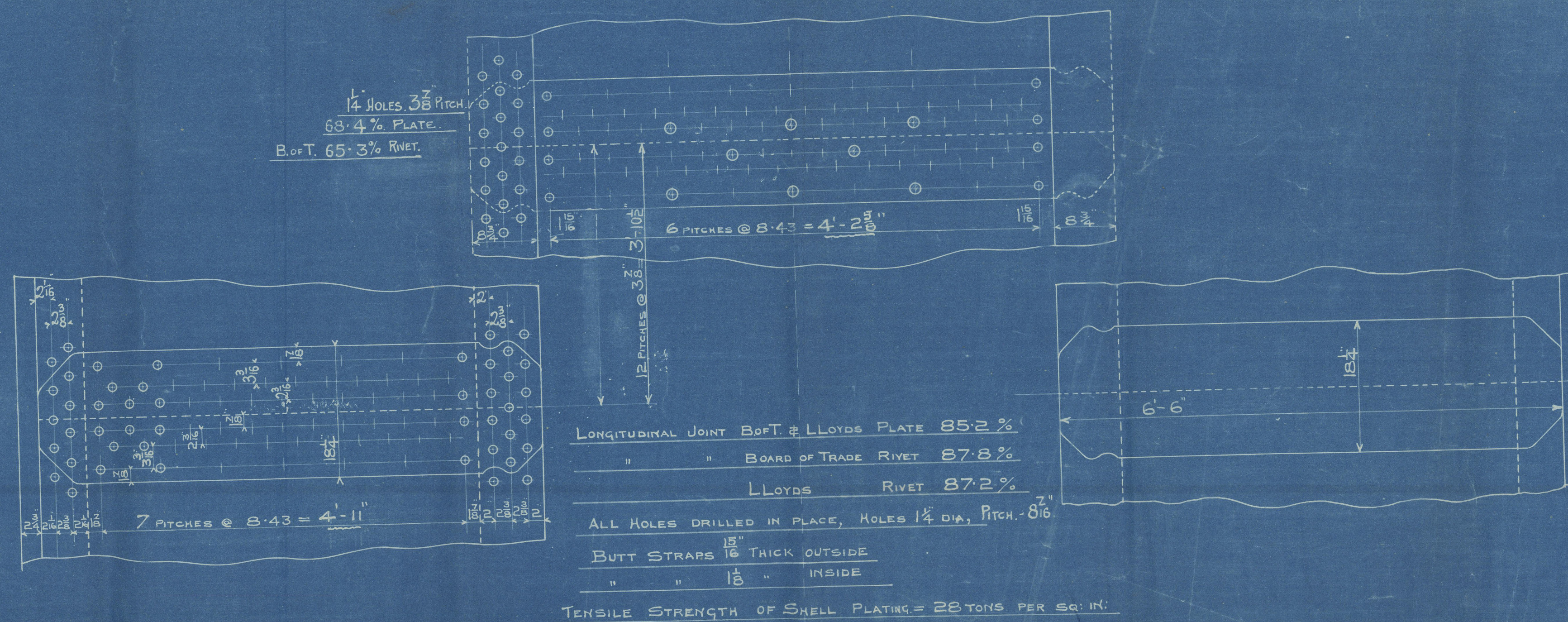


PARTICULARS			
HEATING SURF. IN 480 TUBES	=	2875	SQ. FT.
" " " 3 COMB. CHRS.	=	241	" "
" " " 6 FURNACES	=	300	" "
TOTAL HEATING SURF. IN ONE BOILER	=	3415	" "
GRATE AREA (BARS 5' 10" LONG)	=	1.12	" "
RATIO HEATING SURF. : GRATE SURF.	=	30.5	: 1
WEIGHT OF WATER IN 1 BL. AT 370.4° F.	=	31	TONS.

18 HOLES, 3/8" PITCH.  
64.5% PLATE.  
B.O.T. 51.2% RIVET.



TO LLOYDS & BOARD OF TRADE REQUIREMENTS FOR 165 LB. WORKING PRESSURE.

BOILER OF STEEL THROUGHOUT, EXCEPT TUBES & PORTABLE STAYS, WHICH ARE IRON.

BOILERS N° 593

SCALE 1" = 1 FOOT

ENG<sup>S</sup> 423

S.S. R. 1920  
Lloyd's Register



A. & J. Inglis

Order 7<sup>o</sup> 5-93.

for

Burns Steamer

duplicate

of

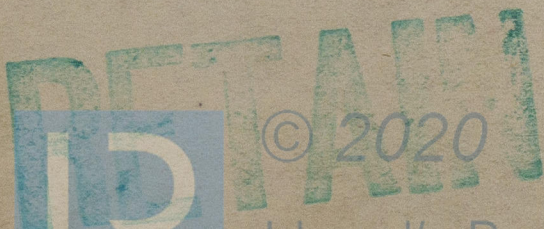
7<sup>o</sup> 5-91



GLASGOW REPORT No.

38958.

S. S. Killarney



Lloyd's Register  
W505-0233 dation