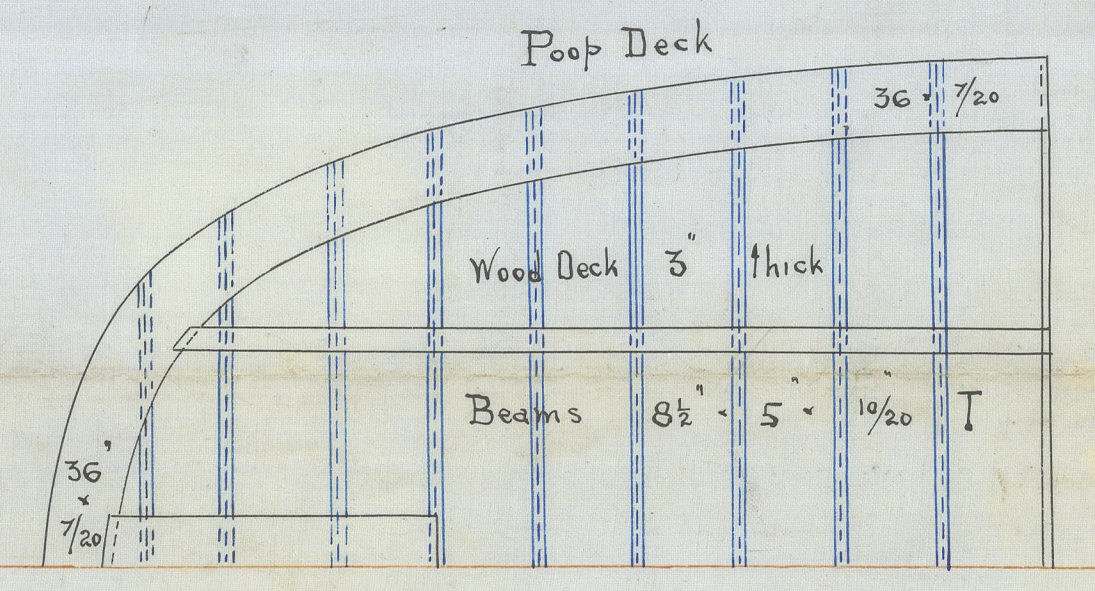
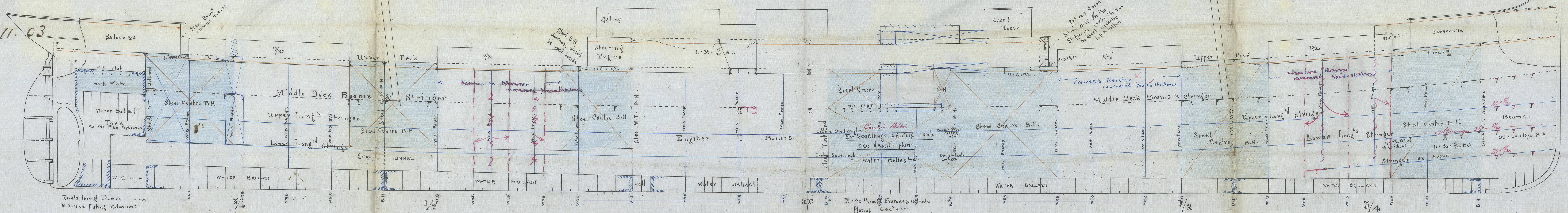


26.11.03

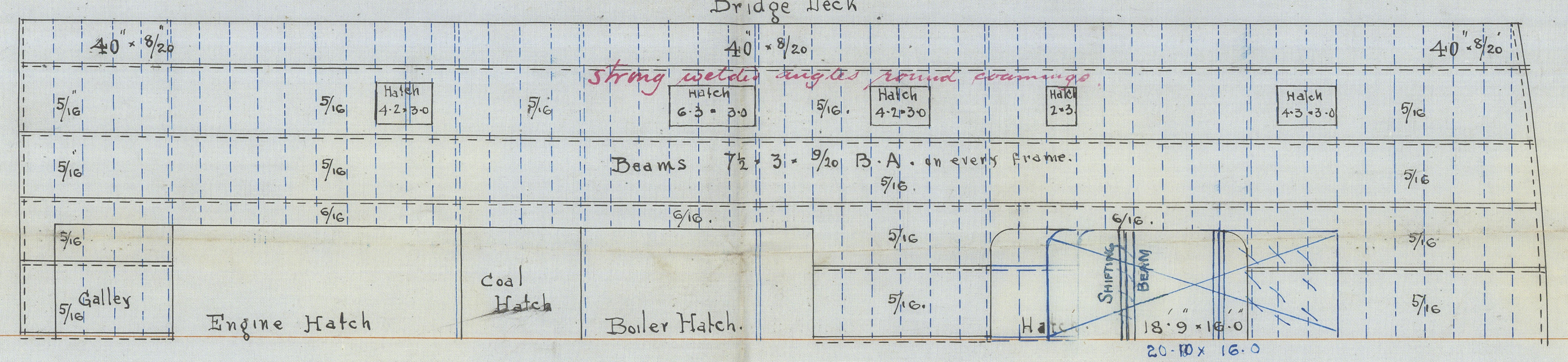
# PROFILE & DECK PLANS. STEEL $\frac{1}{2}$ N° 378

Class 100. A. I. & Deck rule



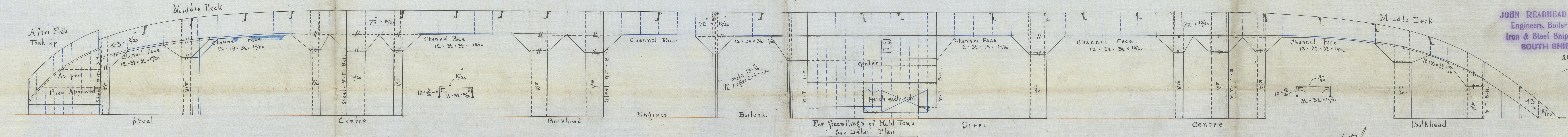
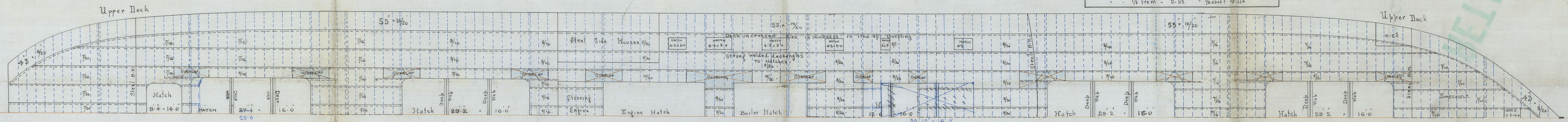
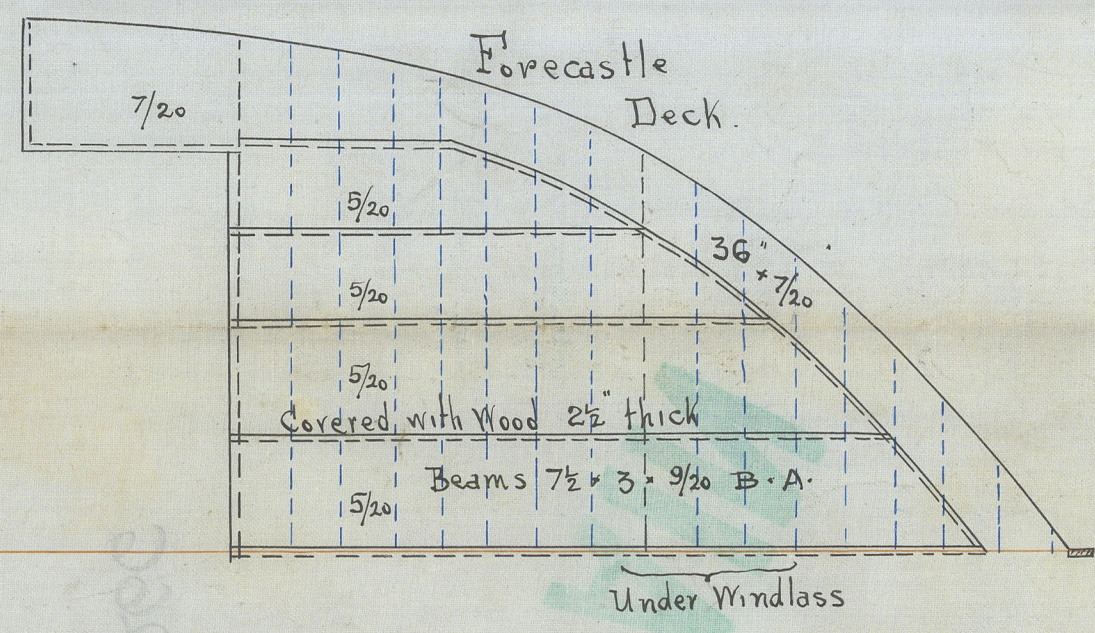
JOHN READHEAD & SONS,  
Engineers, Boiler Makers,  
Iron & Steel Ship Builders,  
SOUTH SHIELDS.

24/11/03



PARTICULARS FOR FREEBOARD  
Scantlings & Class 100 A. I. & Deck Rule

Length between perpendiculars	355.0
Breadth extreme	48.9
Depth of Hold amidships	25.9
Moulded to Upper deck	28.53
Round of Beam	1.0
Tonnage under upper deck	378.0 tons
Coeff. of Fineness	.848
Poop	30.2
Bridge	106.3
Forecastle	35.2
Upper deck of iron & steel	4.6
Sheer at stern post	at stem 9.0
	1/8 from - 2.53 1/8 abaft 4.114



JOHN READHEAD & SONS,  
Engineers, Boiler Makers,  
Iron & Steel Ship Builders,  
SOUTH SHIELDS.

24/11/03



Newcastle - on - Tyne

Profile 9

Messrs Readhead & Sons

Yard No 378

S/S "ILWEN"

Newcastle Report

No 47406.

RETAIN

WS000 0266



© 2021

Lloyd's Register  
Foundation