

23/1-28. Ref.

Draw. 98.284

Pinion with shaft

1:2,5

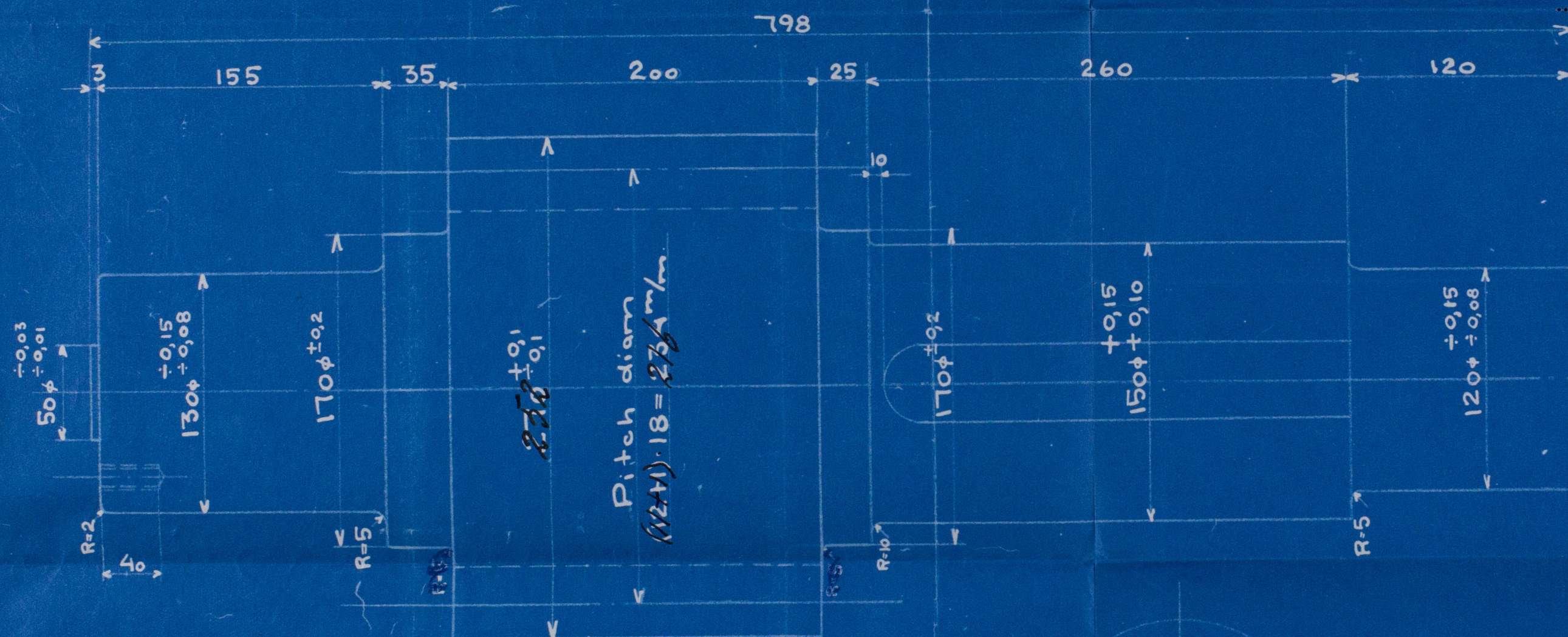
Forged Steel

Forged steel 60-70 kg. pr. sq. mm. tensile strength
by min. 20 per ct. elongation.
 27/12-27. Ref.

THIS DRAWING IS STRICTLY CONFIDENTIAL
 AND MUST ON NO ACCOUNT BE COPIED OR
 DISCLOSED FOR ANY THIRD PERSON.

ODENSE, DATE: 25/6-28. *Th.*
 THOMAS B. THRIGE

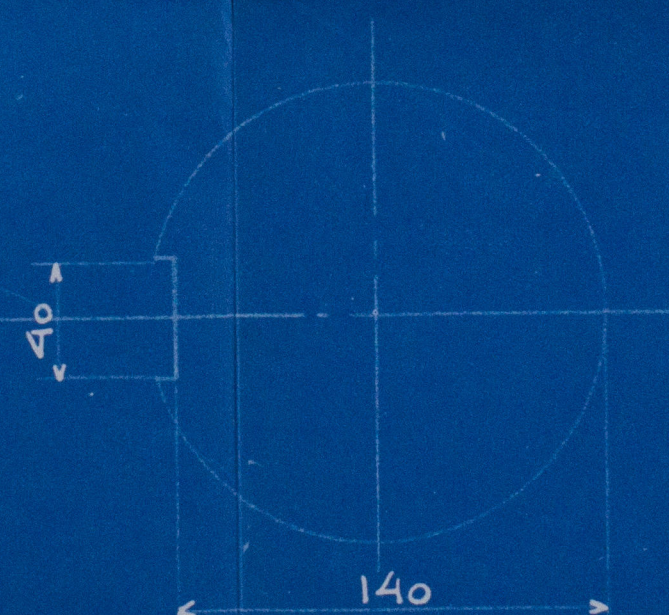
The pinion and quadrant must mesh
 especially well without play.



Cut teeth.

No. of teeth: 12.

Pitch: 18 π.



To be drilled by erection.

WJ.

4.7.28

W50-0040

Plan of

Pinion with Shaft

for the Electric steering gear
to be constructed by

Thomas B. Thorgil

Odense

for the Twin Screw Motor Vessel

Yard No 557.

being built by

Akt. Burmeister & Wain's

Maskin og Skibsbyggeri

Copenhagen



M/s ^{"Koenig"} ^{ex} "STJERNEBORG" of Copenhagen
Copenhagen Report No 7970.

W50-0040



© 2020

Lloyd's Register
Foundation